

# 3B

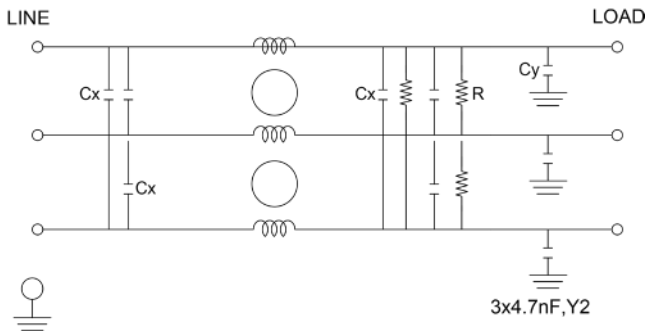
## 3-PHASE ECONOMICAL $\Pi$ SECTION FILTER

### FEATURES

- » Rated currents include **8A, 16A, 30A, 60A, 100A, 150A and 200A**
- » Single Stage Line Filter
- » Available with **QD** tabs or **S** (studs) option
- » Economical Design
- » Low Profile Case & Flange Mount Available
- » Agency Approved to UL E78081, CSA LR53652 and TUV
- » Y-cap value can be adjusted to fit specification

### ELECTRICAL SCHEMATIC

#### DELTA - SUFFIX "D"

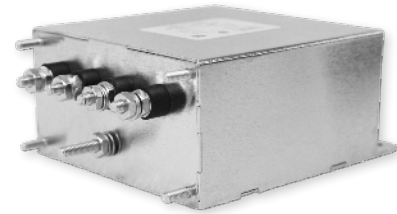


### HOW TO ORDER

3B100DB LF

- F = (F) FLANGE (H) END MOUNT
- L = LOW PROFILE CASE
- D = DELTA
- X = RATED CURRENT
- 3B = FILTER SERIES

**NOTE:** USE ANY COMBINATION OF -X (AMPS) WITH ANY -Y RATINGS  
E.G. **3B100DB LF** (100 AMPS, DELTA, LOW PROFILE CASE, FLANGE MOUNT)



### SPECIFICATIONS

OPERATING FREQUENCY	50/60Hz
MAX. OPERATING VOLTAGE	250VAC +10% (DELTA) 440VAC +10% (WYE)
TERMINALS (-T)	QD: 0.25" TABS STUDS: 8-32(8-30A), 1/4-20 (60A), 5/16-18 (100A), 3/8-16 (150-200A)
TYP. WEIGHT, LBS (KG)	0.81 - 11 (0.36 - 4.98)

#### TYPICAL LEAKAGE CURRENT

@ 250 VAC 50 Hz                      0 - 2.80 mA Max.

#### HIPOT RATINGS

LINE TO GROUND                      2700 VDC - 3200 VDC

### TYPICAL APPLICATIONS

- ✓ High Power Rectifiers
- ✓ Uninterrupted Power Supplies
- ✓ Processing Equipment
- ✓ Alternative Energy (EV Charging & Solar)
- ✓ Factory Machinery

# 3B

## 3-PHASE ECONOMICAL $\Pi$ SECTION FILTER

MODEL NO.	RATED CURRENT (A) @ 40° C	Y-CAP, nF	LEAKAGE CURRENT, mA @ 250V AC, 50 Hz /	TERMINAL OPTIONS		MAX. DIMENSIONS" (MM)		
				(QD) INPUT/ OUTPUT	(S) INPUT/ OUTPUT	WIDTH	(LENGTH)	HEIGHT
3B8	8	4x.0047 $\mu$ F	.80	✓		2.12"(54)	4.11"(105)	1.79"(46)"
3B8D	8	3x.0047 $\mu$ F	.80	✓		2.12"(54)	4.11"(105)	1.79"(46)"
3B8D S	8	3x.0047 $\mu$ F	.80		✓	2.12"(54)	4.11"(105)	1.79"(46)"
3B16	16	4x.01 $\mu$ F	1.4	✓		2.88"(73)	4.33"(110)	2.04"(52)"
3B16D	16	3x.01 $\mu$ F	1.4	✓		2.88"(73)	4.33"(110)	2.04"(52)"
3B16D S	16	3x.01 $\mu$ F	1.4		✓	2.88"(73)	4.33"(110)	2.04"(52)"
3B30	30	4x.01 $\mu$ F	1.4		✓	4.12"(105)	5.24"(133)	1.79"(45.5)
3B30 L	30	*	1.4	*	*	4.12"(105)	5.24"(133)	1.79"(45.5)
3B30 LF	30	4x.01 $\mu$ F	1.4		✓	4.12"(105)	5.24"(133)	1.79"(45.5)
3B30D	30	3x.01 $\mu$ F	1.4		✓	4.12"(105)	5.24"(133)	1.79"(45.5)
3B30DB	30	3x.022 $\mu$ F	2.8		✓	4.12"(105)	5.24"(133)	1.79"(45.5)
3B60 L	60	*	1.4	*	*	4.25"(108)	8.14"(207)	2.25"(57)
3B60 LF	60	4x.01 $\mu$ F/4x.01 $\mu$ F	1.4		✓	4.25"(108)	8.14"(207)	2.25"(57)
3B60B LF	60	4x.001 $\mu$ F/4x.022 $\mu$ F	1.4		✓	4.25"(108)	8.14"(207)	2.25"(57)
3B60D L	60	*	1.4	*	*	4.25"(108)	8.14"(207)	2.25"(57)
3B60D LF	60	3x.01 $\mu$ F	1.4		✓	4.25"(108)	8.14"(207)	2.25"(57)
3B60D LH	60	3x.01 $\mu$ F	1.4		✓	4.25"(108)	8.14"(207)	2.25"(57)
3B100 L	100	*	1.4	*	*	5.50"(140)	8.87"(225)	3.00"(76)
3B100 LF	100	4x.01 $\mu$ F	1.4		✓	5.50"(140)	8.87"(225)	3.00"(76)
3B100B LF	100	4x.022 $\mu$ F	1.4		✓	5.50"(140)	8.87"(225)	3.00"(76)
3B100D L	100	*	2.1	*	*	5.50"(140)	8.87"(225)	3.00"(76)
3B100D LF	100	3x.015 $\mu$ F	2.1		✓	5.50"(140)	8.87"(225)	3.00"(76)
3B100DB LF	100	4x.022 $\mu$ F	3.1		✓	5.50"(140)	8.87"(225)	3.00"(76)
3B150	150	*	2.1	*	*	5.00"(127)	10.00"(254)	4.75"(121)
3B150D	150	*	2.1	*	*	5.00"(127)	10.00"(254)	4.75"(121)
3B150D H	150	3x.015 $\mu$ F	2.1		✓	5.00"(127)	10.00"(254)	4.75"(121)
3B150DB F	150	3x.022 $\mu$ F	2.1		✓	5.00"(127)	10.00"(254)	4.75"(121)
3B200	200	*	2.1	*	*	*	*	*

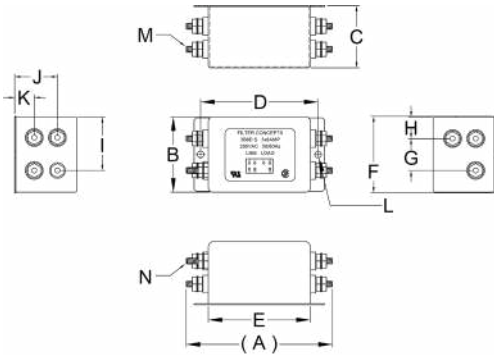
\*Contact factory for dimensions.

# 3B

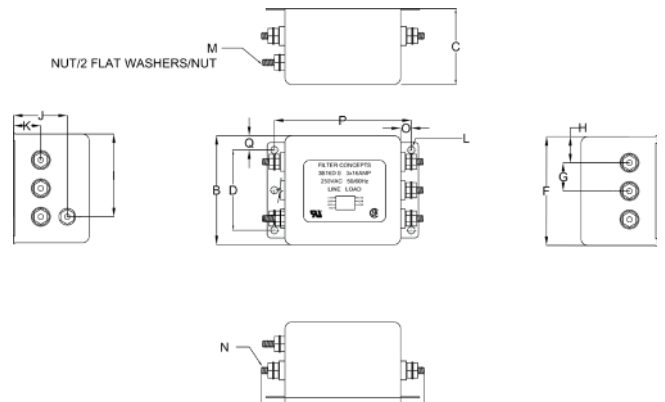
## 3-PHASE ECONOMICAL Π SECTION FILTER

### 3B MECHANICAL OUTLINES (MM)

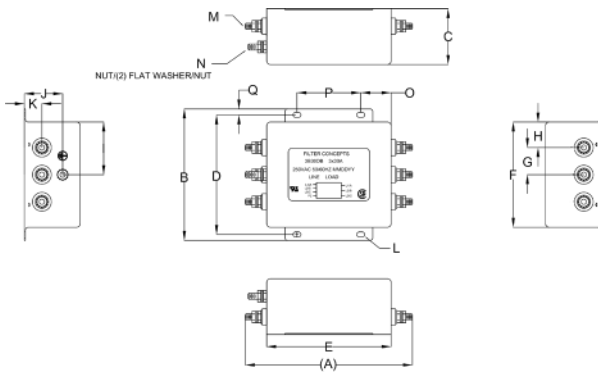
**QD TABS (8AMPS)**



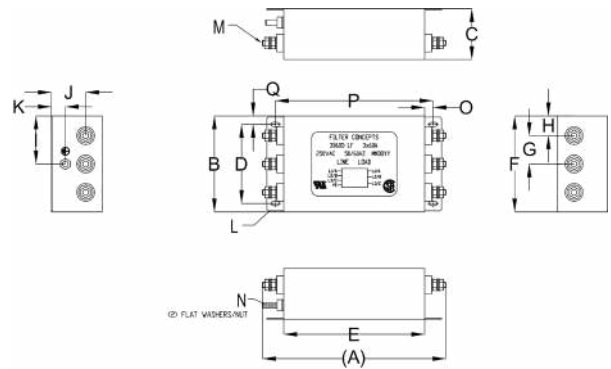
**STUDS (16 AMPS)**



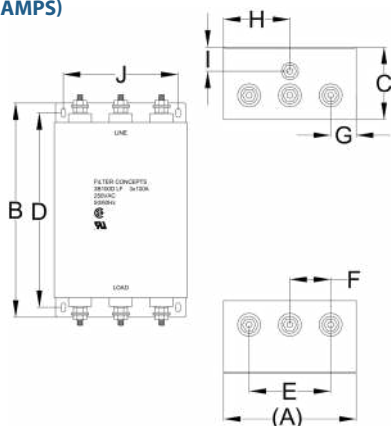
**STUDS (30 AMPS)**



**STUDS (60 AMPS)**



**STUDS (100-150 AMPS)**



# 3B

## 3-PHASE ECONOMICAL Π SECTION FILTER

SERIES	(A)	B	C	D	E	F	G	H	I	J	K	L	M	N	O	P	Q
<b>8 amps</b>	4.11" (105)	2.12" (54)	1.79" (46)	3.31" (84)	2.87" (73)	2.18" (55)	0.90" (23)	0.61" (16)	1.55" (39)	1.20" (31)	0.55" (14)	0.18",2x Ø4.75, 2x	STUD, 8-32, 6x	STUD, GND, 8-32	N/A	N/A	N/A
<b>16 amps</b>	4.33" (110)	2.88" (73)	2.04" (52)	2.12" (54)	3.06" (78)	2.87" (73)	0.75" (19)	0.69" (18)	2.19" (56)	1.42" (36)	0.72" (18)	0.18", 6x Ø4.7, 6x	STUD, 8-32, 6x	STUD, GND, 8-32	0.28" (7)	3.62" (92)	0.38" (10)
<b>30 amps</b>	5.24" (133)	4.12" (105)	1.79" (45.5)	3.75" (95)	3.90" (99)	3.30" (84)	0.85" (22)	0.80" (20)	1.65" (42)	1.20" (30)	0.55" (14)	0.15"x0.25",4x Ø,4.0x6.35, 4x	STUD, 8-32, 6x	STUD, GND, 8-32	0.95" (24)	2.00" (51)	0.19" (5)
<b>60 amps</b>	8.14" (207)	4.25" (108)	2.25" (57)	3.50" (89)	6.25" (159)	4.25" (108)	1.26" (32)	0.87" (22)	2.13" (54)	1.52" (39)	0.62" (16)	0.37"x0.18",4x Ø 9.5x4.8, 4x	STUD, 1/4-20, 6x	STUD, GND, 1/4-20	0.37" (10)	7.00" (178)	0.37" (9)
<b>100 amps</b>	5.50" (140)	8.87" (225)	3.00" (76)	8.06" (205)	3.38" (86)	1.70" (43)	1.06" (27)	2.75" (70)	1.00" (25)	4.74" (120)	N/A	N/A	N/A	N/A	N/A	N/A	N/A
<b>150 amps</b>	5.00" (127)	10.00" (254)	4.75" (121)	8.89" (226)	3.00" (76)	1.50" (38)	1.00" (25)	2.50" (64)	1.30" (33)	4.00" (102)	N/A	N/A	N/A	N/A	N/A	N/A	N/A

TYPICAL TOLERANCE: +/-0.02" (0.50MM)

### TYPICAL INSERTION LOSS, dB (50/50 Ohm)

Amps	Freq (MHz)	0.01	0.15	0.5	1.0	10	30
<b>3B8D</b>	CM (dB)	6	6	50	39	56	63
	DM (dB)	18	18	38	35	53	62
<b>3B8D S</b>	CM (dB)	6	6	50	39	56	63
	DM (dB)	18	18	38	35	53	62
<b>3B8</b>	CM (dB)	17	17	35	39	56	63
	DM (dB)	18	18	38	35	53	62
<b>3B16D</b>	CM (dB)	20	20	50	39	56	63
	DM (dB)	18	18	38	35	53	62
<b>3B16D S</b>	CM (dB)	20	20	50	39	56	63
	DM (dB)	18	18	38	35	53	62
<b>3B16</b>	CM (dB)	20	20	40	39	56	63
	DM (dB)	18	18	38	35	53	62
<b>3B30D</b>	CM (dB)	20	20	50	39	56	63
	DM (dB)	18	18	38	35	53	62
<b>3B30DB</b>	CM (dB)	20	20	50	39	56	63
	DM (dB)	21	21	42	35	53	62
<b>3B30</b>	CM (dB)	20	20	40	39	56	63
	DM (dB)	18	18	38	35	53	62

# 3B

## 3-PHASE ECONOMICAL $\Pi$ SECTION FILTER

Amps	Freq (MHz)	0.01	0.15	0.5	1.0	10	30
<b>3B30 LF</b>	CM (dB)	20	20	40	39	56	63
	DM (dB)	18	18	38	35	53	62
<b>3B30B LF</b>	CM (dB)	20	20	40	39	56	63
	DM (dB)	18	18	38	35	53	62
<b>3B30 L</b>	CM (dB)	20	20	40	39	56	63
	DM (dB)	18	18	38	35	53	62
<b>3B60D LF</b>	CM (dB)	30	30	60	39	56	63
	DM (dB)	18	18	35	35	53	62
<b>3B60B LF</b>	CM (dB)	20	20	40	39	56	63
	DM (dB)	18	18	38	35	53	62
<b>3B60 LF</b>	CM (dB)	20	20	60	39	56	63
	DM (dB)	22	22	40	35	53	62
<b>3B60 L</b>	CM (dB)	20	20	40	39	56	63
	DM (dB)	18	18	38	35	53	62
<b>3B60D L</b>	CM (dB)	20	20	40	39	56	63
	DM (dB)	18	18	38	35	53	62
<b>3B100D LF</b>	CM (dB)	30	30	50	39	56	63
	DM (dB)	18	18	34	35	53	62
<b>3B100 LF</b>	CM (dB)	30	30	60	39	56	63
	DM (dB)	17	17	40	35	53	62
<b>3B100B LF</b>	CM (dB)	30	30	60	39	56	63
	DM (dB)	20	20	43	35	53	62
<b>3B100DB LF</b>	CM (dB)	30	30	50	39	56	63
	DM (dB)	21	21	37	35	53	62
<b>3B100 L</b>	CM (dB)	20	20	40	39	56	63
	DM (dB)	18	18	38	35	53	62
<b>3B100D L</b>	CM (dB)	20	20	40	39	56	63
	DM (dB)	18	18	38	35	53	62
<b>3B150D H</b>	CM (dB)	48	48	65	39	56	63
	DM (dB)	18	18	38	35	53	62
<b>3B150DB F</b>	CM (dB)	20	20	40	39	56	63
	DM (dB)	18	18	38	35	53	62
<b>3B150</b>	CM (dB)	20	20	40	39	56	63
	DM (dB)	18	18	38	35	53	62

# 3B

## 3-PHASE ECONOMICAL $\Pi$ SECTION FILTER

Amps	Freq (MHz)	0.01	0.15	0.5	1.0	10	30
<b>3B150D</b>	CM (dB)	20	20	40	39	56	63
	DM (dB)	18	18	38	35	53	62
<b>3B200</b>	CM (dB)	20	20	40	39	56	63
	DM (dB)	18	18	38	35	53	62