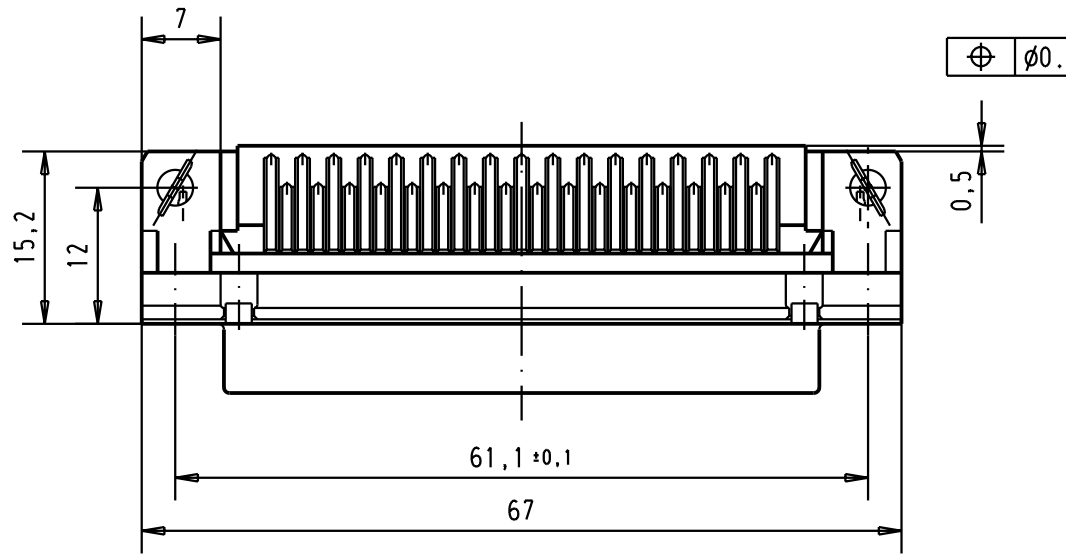
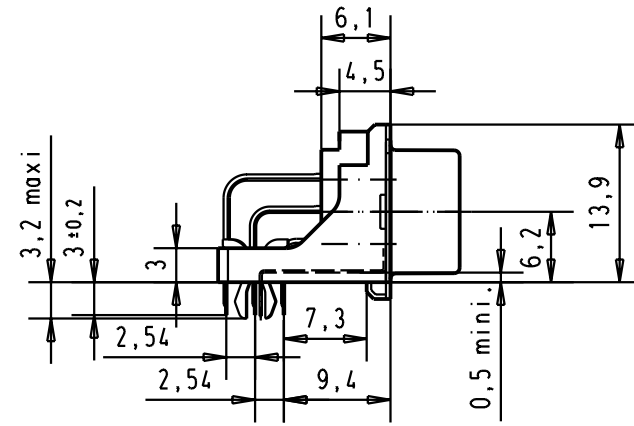
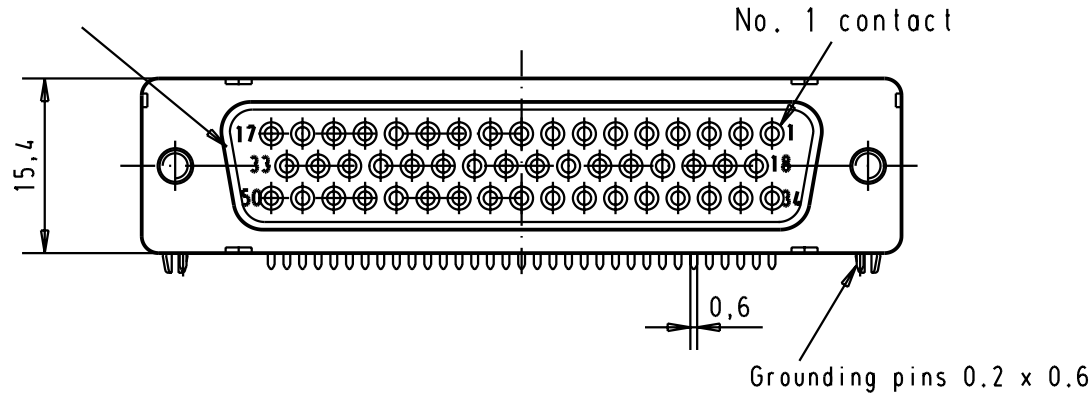
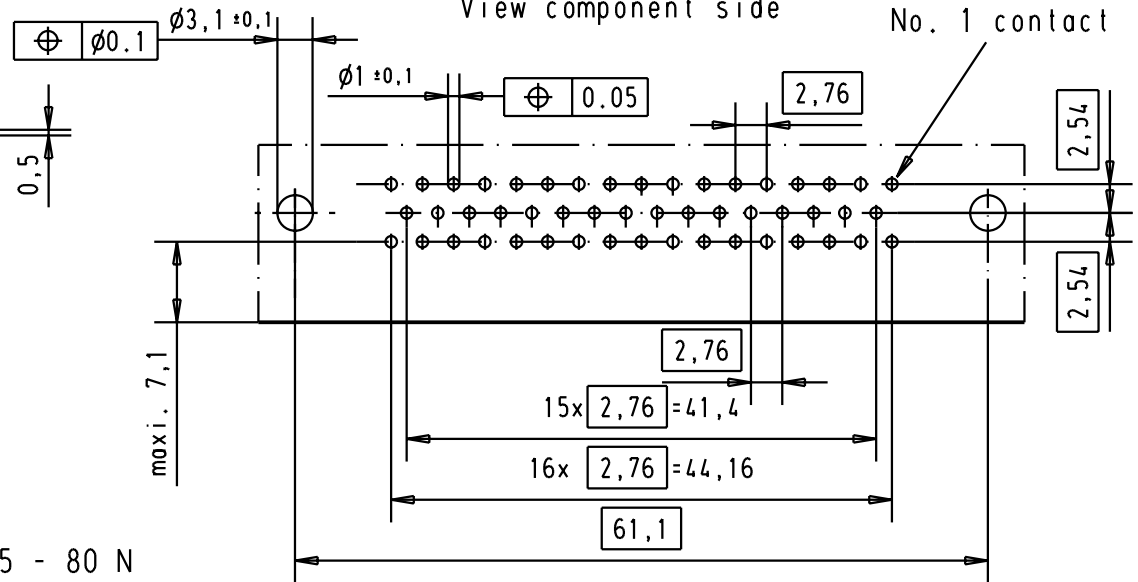


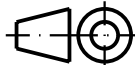

Mating face according to MIL-C-24308 / DIN 41 652 / CECC 75301-802



Mounting force on Printed board : 25 - 80 N

Printed board layout (1,6 ± 0,2 thick)  
View component side



A	09 66 552 6615	M3	2							 All Dim. in mm Orig. Size DIN A 4	D-Sub female low profile 50 poles with solder pins, nuts, board lock and grounding pins	Maßstab/ Scale  1,5:1
	09 66 552 7615	M3	3									
	09 66 552 5615	M3	0,76 µm Au									
	09 66 552 6616	4-40 UNC	2									
	09 66 552 7616	4-40 UNC	3	31084	04/SEP/02	YT						
	09 66 552 5616	4-40 UNC	0,76 µm Au	29733	23-NOV-01	JB						
	Part number	nut thread	Performance level	Mod.	Dat.	Name	HARTING EURL F-95972 Paris				TB 09 66 552 X61x Sub.	Blatt/ Page 2