

AN-1636 LP5522 Evaluation Kit

1 General Description

The LP5522 is a simple single wire programmable LED controller in six bump DSBGA package. It provides constant current flow through high side driver. Output current can be set from 1 mA to 20 mA by using an external resistor on the ISET pin. If no external resistor is used, output current is set to 5 mA default current. The LP5522 is controlled using only one signal. The signal controls either directly the LED driver or it launches previously programmed blinking sequence.

The LP5522 works autonomously without a clock signal from the master device. Very low LED driver headroom voltage makes possible to use supply voltages close to LED forward voltage. Current consumption of the LP5522 is minimized when LED is turned off and once controller is disabled all supporting functions are also shut down. Very small DSBGA package together with minimum number of external components is a best fit for handheld devices.

2 Evaluation Kit Overview

LP5522 Evaluation Kit is based on a modular system, where the actual evaluation board is plugged on top of the PC interface board, see [Figure 1](#). The interface operates through the USB port. The kit supports complete functional evaluation of the circuit. The evaluation kit consists of:

- LP5522 evaluation board
- USB interface board
- USB interface cable
- CD-ROM including:
 - Evaluation software
 - LP5522 datasheet
 - Evaluation kit document (this doc.)

3 Evaluation Software

LP5522 evaluation software (LP5522.exe) is supplied on the delivery CD together with all available documentation regarding the circuit. Copy the LP5522.exe and the usblptio.dll to your PC's hard disk. The usblptio.dll needs to be in the same directory as the evaluation software. The software is run by double clicking its icon. The software does not require any installation.

User interface of the evaluation software is shown in [Figure 2](#). All functions of the chip are controlled from the user interface. Mode field shows the current operation mode of the chip. Trained field indicates if there is a blinking sequence programmed to the chip. Blinking sequence is trained to the chip by using the three on- and off time slide bars. Below the slide bars is the blinking sequence preview window. On the bottom of the user interface are the control buttons. Reset button resets the chip to its initial state. Manual button is used to directly control LED on and off and is accessible only when no blinking sequence is programmed to the chip. Train button is used to program the sequence selected on the sequence field to the chip. Run and Run Once buttons are accessible only when there is a blinking sequence trained to the chip. Run button sets the chip to continuous run mode until Run button is pressed again or Reset button is pressed. Run once button runs the trained sequence once and then the chip returns back to standby mode. Quit button shuts down the control program.



Figure 1. LP5522 Evaluation Board with USB Interface Board

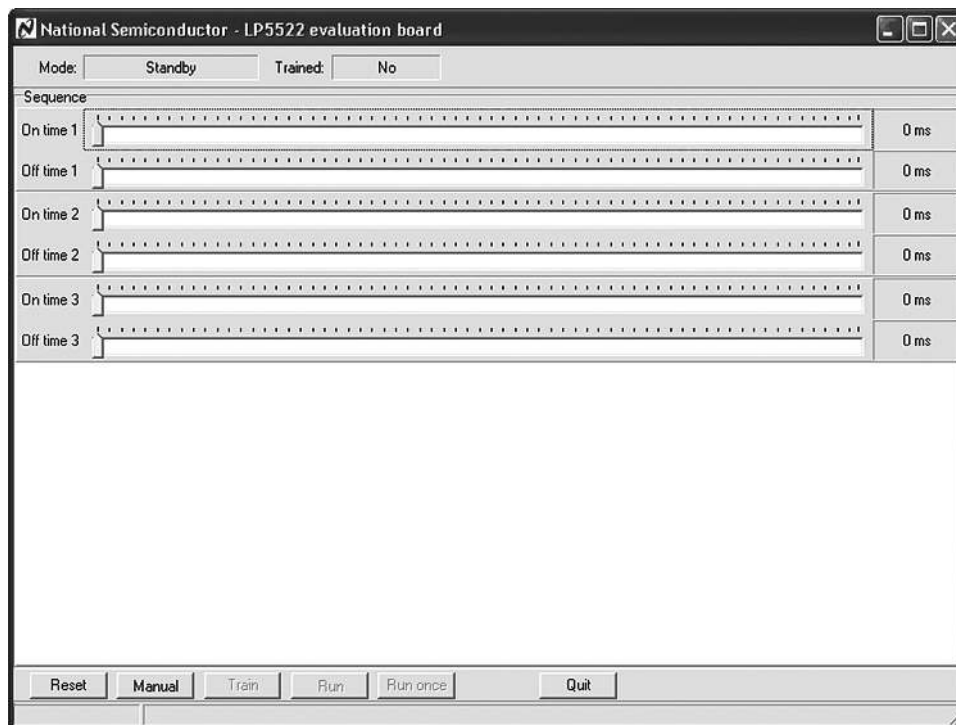


Figure 2. LP5522 Evaluation Software User Interface

4 Evaluation Hardware

The evaluation board, [Figure 3](#), has the LP5522 circuit with the necessary external components placed around it. Test points for the circuit pins are on the board. USB interface card can supply the VDD voltage. If external power supply is preferred it can be connected to the external power connector (X4).

There is a jumper on board for selecting between power supplies. When there is no external power supply connected the jumper should be connected to VDD_USB. There is also jumper on board for connecting Iset pin to external current selecting resistor Riset or to VDD. Connecting Iset to VDD sets the LED current to default 5 mA. The onboard current set resistor is 24 kΩ. Connecting Iset pin to Riset results to 20 mA LED current. Jumper J19 disconnects LED from GND. This allows easy LED current measuring.

Two PCB connectors on the bottom side of the board make the connection to the USB interface board

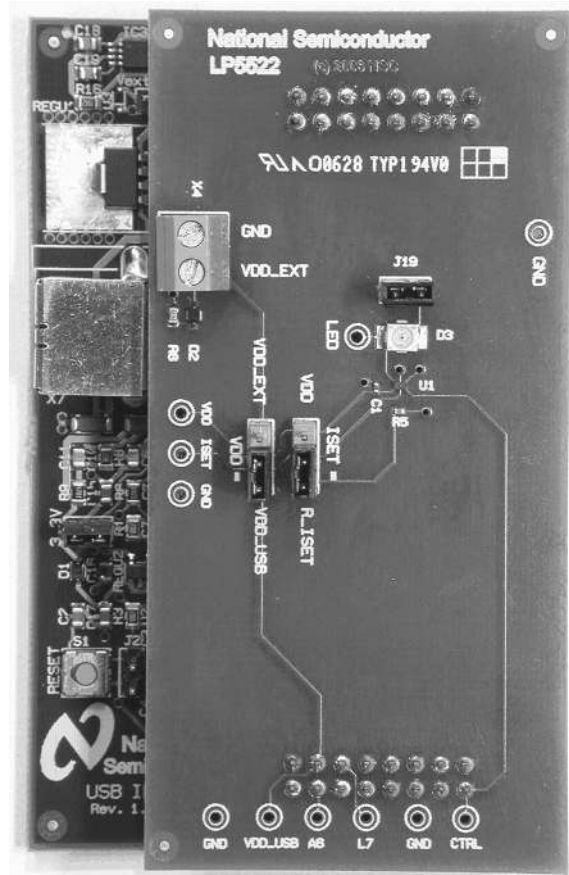


Figure 3. LP5522 Evaluation Board

5 USB Interface

The USB interface, [Figure 4](#), forms the connection between the PC and the evaluation system. It converts the commands from PC to one wire interface used in LP5522. It also provides the supply voltage for the evaluation board.

Interface board has RESET-button that can be used to reset processor on the interface board if the software or hardware halts for some reason.

The USB interface checks for the firmware version of the USB board when the evaluation software is started. If the firmware needs updating, the software prompts you to allow automatic update.

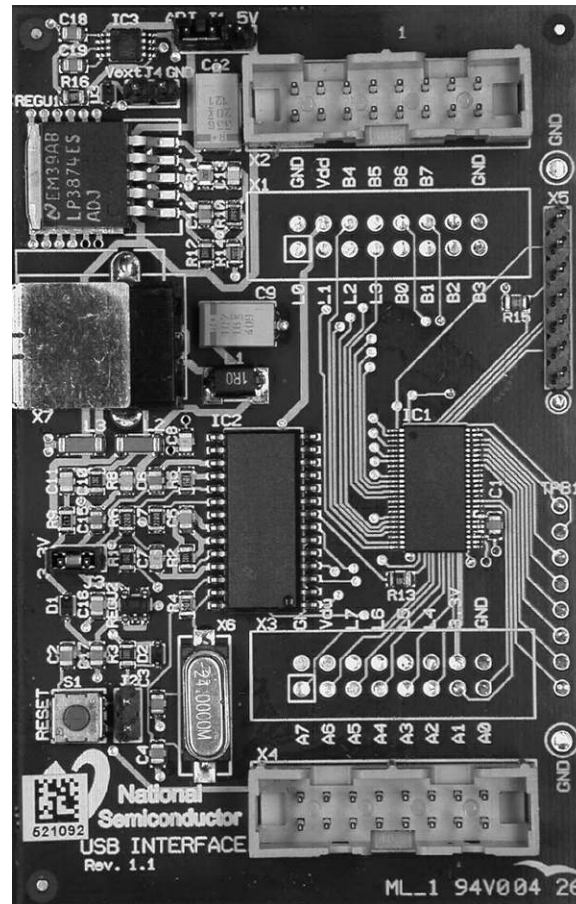


Figure 4. USB Interface Board

6 Getting Started

The following instructions show how to use the LP5522 evaluation kit in default conditions with the USB interface board. Please use ESD protection to prevent any unwanted damaging ESD events

1. Check the onboard jumpers. VDD should be connected to VDD_USB and jumper J19 should be on. Removing jumper J19 disconnects LED from GND. ISET can be connected either to VDD or R_ISET.
2. Plug the evaluation board to the USB board. Connect the USB cable to the USB Interface board and to the USB port of your PC. When you plug in the USB board for the first time, your operating system prompts you about "New hardware found" and installs the USB driver. With Win95 and Win98 operating systems you have to accept the installation and click "Next" several times as the installation proceeds.
3. Copy the evaluation software and the support files to your PC's hard disk. Start the software by double-clicking its icon. If USB Interface Boards firmware update is required the software prompts you to allow automatic update.
4. Turn on the LED by bushing the manual button. If system is correctly installed the onboard LED should be light.
5. The Evaluation Kit is now ready to use and the chip can be controlled through the PC software.

You should disconnect the USB cable from the computer always when plugging in or removing the evaluation board from the interface board and also when changing the supply jumper settings. Otherwise the USB board may stop responding.

If the USB board is not responding or the software hangs up, press the reset button on the USB board, or disconnect the USB cable for 5 seconds.

If the evaluation software notices that the firmware on the USB board needs to be updated, the software can propose automatic firmware updating. The new firmware will be included in the evaluation kit software.

6.1 Programming a Sequence to the Chip

To program a blinking sequence to the chip one to three on- and off sequences must be selected with the slide bars. On time can vary between 1 ms to 255 ms with 1 ms steps and off time can vary between 10 ms to 2550 ms with 10 ms step. Sequences must be selected in numerical order e.g. you must first select on- and off time 1 (sequence 1) in order to be able to use on- and off time 2 (sequence 2). Also both on- and off times must be selected for each used sequences. The preview window shows the currently selected sequences. To program this sequence to the chip push the Train button. During the programming the LED will blink as selected. After programming the Trained window should indicate Yes and the Run and Run once buttons should be available. Also Manual button should be unavailable. Figure 5 shows the evaluation software with two sequences programmed to the chip.

To run the trained sequence push the Run or Run once button. Pushing the Run once button runs the programmed sequence once and then puts the chip back to standby mode. Pushing Run button puts the chip to continuous run mode. To put the chip back to standby mode push the Run button again. To reset the chip and to remove the trained sequence from chip push Reset button. After reset the chip is on its initial state and the LED follows the Manual button.

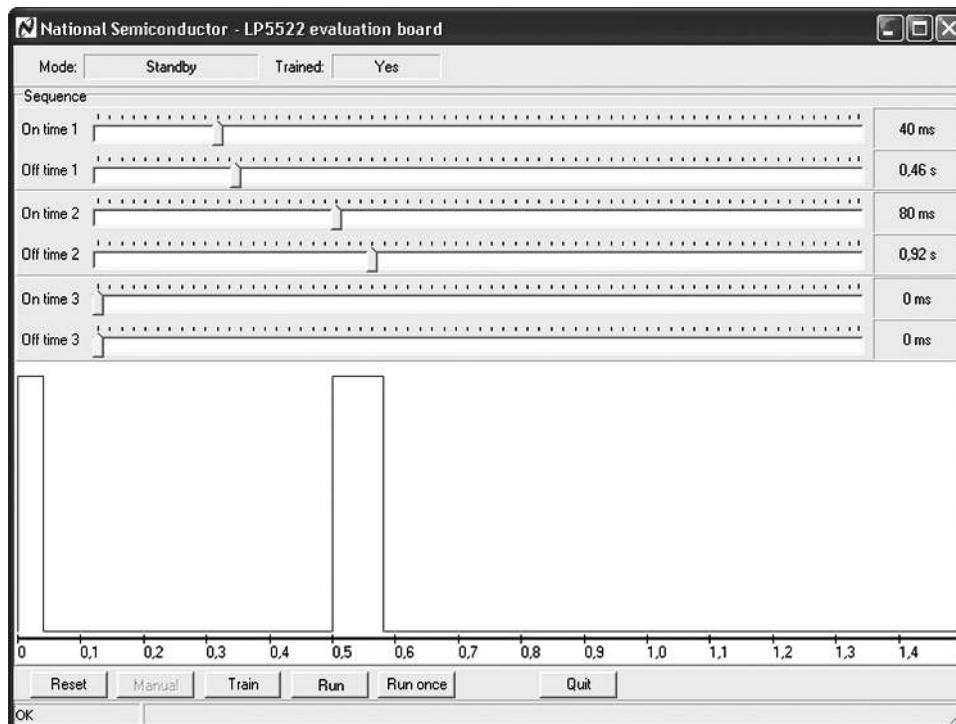


Figure 5. LP5522 Evaluation Software with Two Blinking Sequences Programmed to the Chip

7 Board Layout

The evaluation board layers are:

1. Top, component side, signal (Figure 6)
2. Bottom, GND plane (Figure 7)

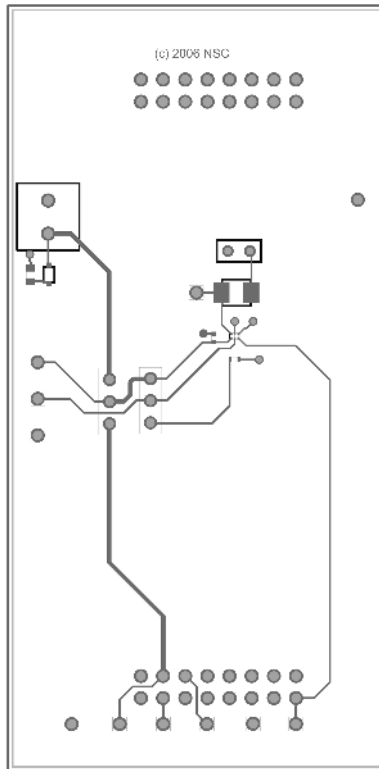


Figure 6. LP5522 Evaluation Board Layer 1
(Top, Signal)

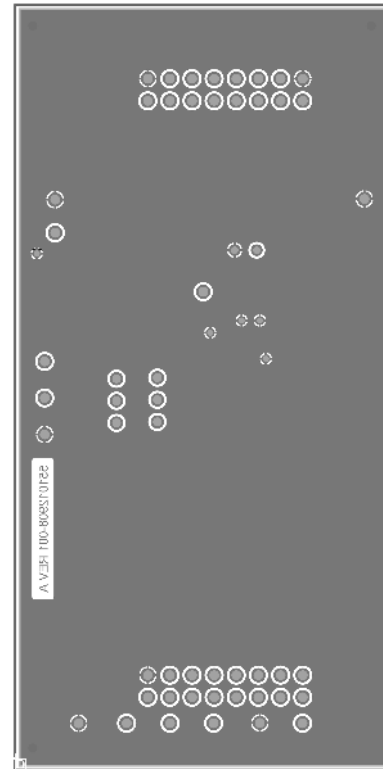


Figure 7. LP5522 Evaluation Board Layer 2
(Bottom, GND)

8 List of Components

| Reference | Model | Type | Vendor | Size |
|-----------|------------|-------------|-------------------|------------------------------|
| C1 | 100 nF 10V | Ceramic X5R | TDK | 0402 (1005) |
| R5 | 24kΩ 1% | - | - | 0402 (1005) |
| D3 | LS T676 | LED Red | Osram | 3.0 mm × 3.4 mm × 2.1 mm |
| U1 | LP5522 | - | Texas Instruments | 1.215 mm × 0.815 mm × 0.6 mm |

9 Evaluation Board Schematic

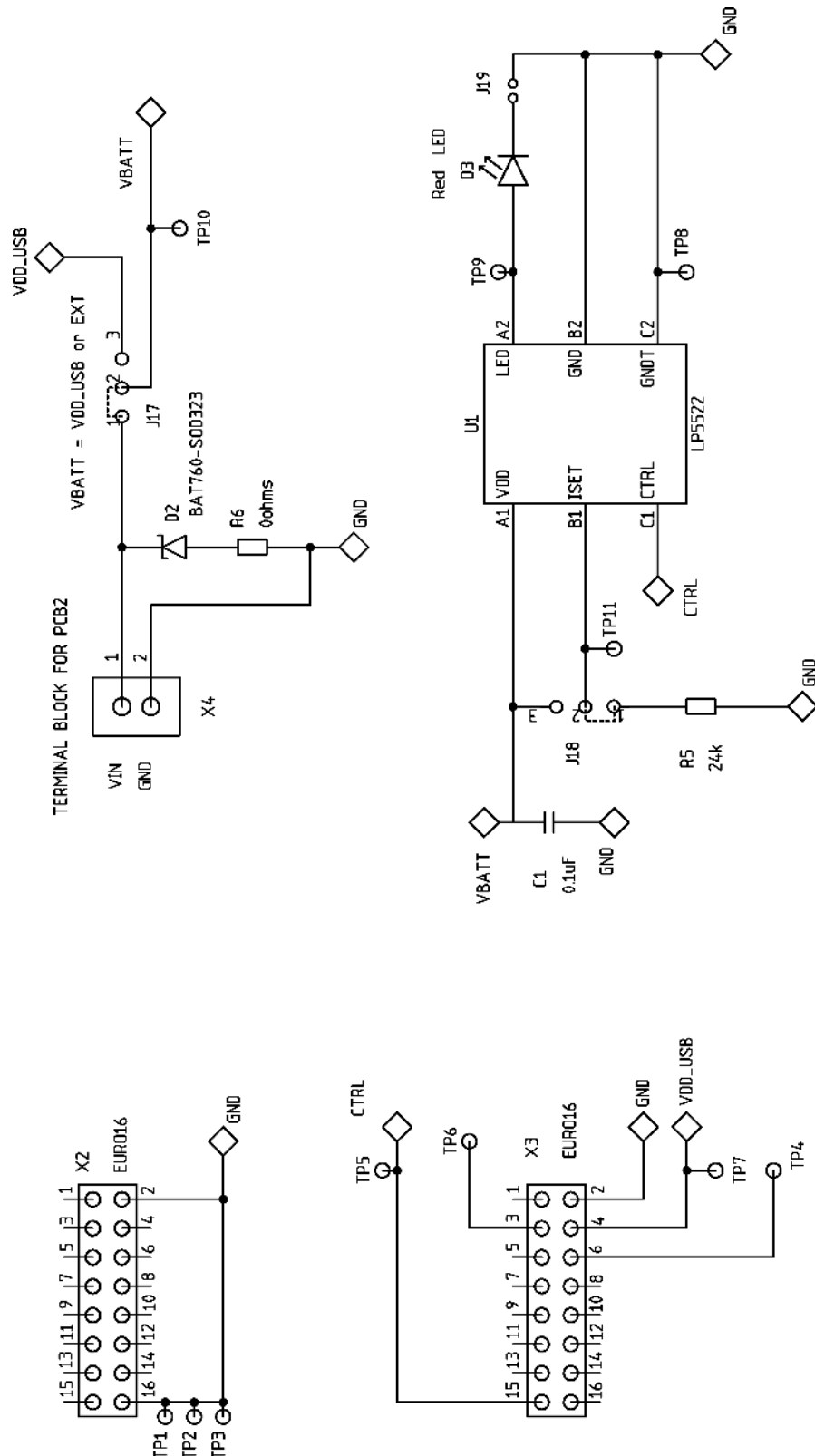


Figure 8. LP5522 Evaluation Board Schematic

IMPORTANT NOTICE

Texas Instruments Incorporated and its subsidiaries (TI) reserve the right to make corrections, enhancements, improvements and other changes to its semiconductor products and services per JESD46, latest issue, and to discontinue any product or service per JESD48, latest issue. Buyers should obtain the latest relevant information before placing orders and should verify that such information is current and complete. All semiconductor products (also referred to herein as "components") are sold subject to TI's terms and conditions of sale supplied at the time of order acknowledgment.

TI warrants performance of its components to the specifications applicable at the time of sale, in accordance with the warranty in TI's terms and conditions of sale of semiconductor products. Testing and other quality control techniques are used to the extent TI deems necessary to support this warranty. Except where mandated by applicable law, testing of all parameters of each component is not necessarily performed.

TI assumes no liability for applications assistance or the design of Buyers' products. Buyers are responsible for their products and applications using TI components. To minimize the risks associated with Buyers' products and applications, Buyers should provide adequate design and operating safeguards.

TI does not warrant or represent that any license, either express or implied, is granted under any patent right, copyright, mask work right, or other intellectual property right relating to any combination, machine, or process in which TI components or services are used. Information published by TI regarding third-party products or services does not constitute a license to use such products or services or a warranty or endorsement thereof. Use of such information may require a license from a third party under the patents or other intellectual property of the third party, or a license from TI under the patents or other intellectual property of TI.

Reproduction of significant portions of TI information in TI data books or data sheets is permissible only if reproduction is without alteration and is accompanied by all associated warranties, conditions, limitations, and notices. TI is not responsible or liable for such altered documentation. Information of third parties may be subject to additional restrictions.

Resale of TI components or services with statements different from or beyond the parameters stated by TI for that component or service voids all express and any implied warranties for the associated TI component or service and is an unfair and deceptive business practice. TI is not responsible or liable for any such statements.

Buyer acknowledges and agrees that it is solely responsible for compliance with all legal, regulatory and safety-related requirements concerning its products, and any use of TI components in its applications, notwithstanding any applications-related information or support that may be provided by TI. Buyer represents and agrees that it has all the necessary expertise to create and implement safeguards which anticipate dangerous consequences of failures, monitor failures and their consequences, lessen the likelihood of failures that might cause harm and take appropriate remedial actions. Buyer will fully indemnify TI and its representatives against any damages arising out of the use of any TI components in safety-critical applications.

In some cases, TI components may be promoted specifically to facilitate safety-related applications. With such components, TI's goal is to help enable customers to design and create their own end-product solutions that meet applicable functional safety standards and requirements. Nonetheless, such components are subject to these terms.

No TI components are authorized for use in FDA Class III (or similar life-critical medical equipment) unless authorized officers of the parties have executed a special agreement specifically governing such use.

Only those TI components which TI has specifically designated as military grade or "enhanced plastic" are designed and intended for use in military/aerospace applications or environments. Buyer acknowledges and agrees that any military or aerospace use of TI components which have **not** been so designated is solely at the Buyer's risk, and that Buyer is solely responsible for compliance with all legal and regulatory requirements in connection with such use.

TI has specifically designated certain components as meeting ISO/TS16949 requirements, mainly for automotive use. In any case of use of non-designated products, TI will not be responsible for any failure to meet ISO/TS16949.

Products

| | |
|------------------------------|--|
| Audio | www.ti.com/audio |
| Amplifiers | amplifier.ti.com |
| Data Converters | dataconverter.ti.com |
| DLP® Products | www.dlp.com |
| DSP | dsp.ti.com |
| Clocks and Timers | www.ti.com/clocks |
| Interface | interface.ti.com |
| Logic | logic.ti.com |
| Power Mgmt | power.ti.com |
| Microcontrollers | microcontroller.ti.com |
| RFID | www.ti-rfid.com |
| OMAP Applications Processors | www.ti.com/omap |
| Wireless Connectivity | www.ti.com/wirelessconnectivity |

Applications

| | |
|-------------------------------|--|
| Automotive and Transportation | www.ti.com/automotive |
| Communications and Telecom | www.ti.com/communications |
| Computers and Peripherals | www.ti.com/computers |
| Consumer Electronics | www.ti.com/consumer-apps |
| Energy and Lighting | www.ti.com/energy |
| Industrial | www.ti.com/industrial |
| Medical | www.ti.com/medical |
| Security | www.ti.com/security |
| Space, Avionics and Defense | www.ti.com/space-avionics-defense |
| Video and Imaging | www.ti.com/video |

TI E2E Community

e2e.ti.com