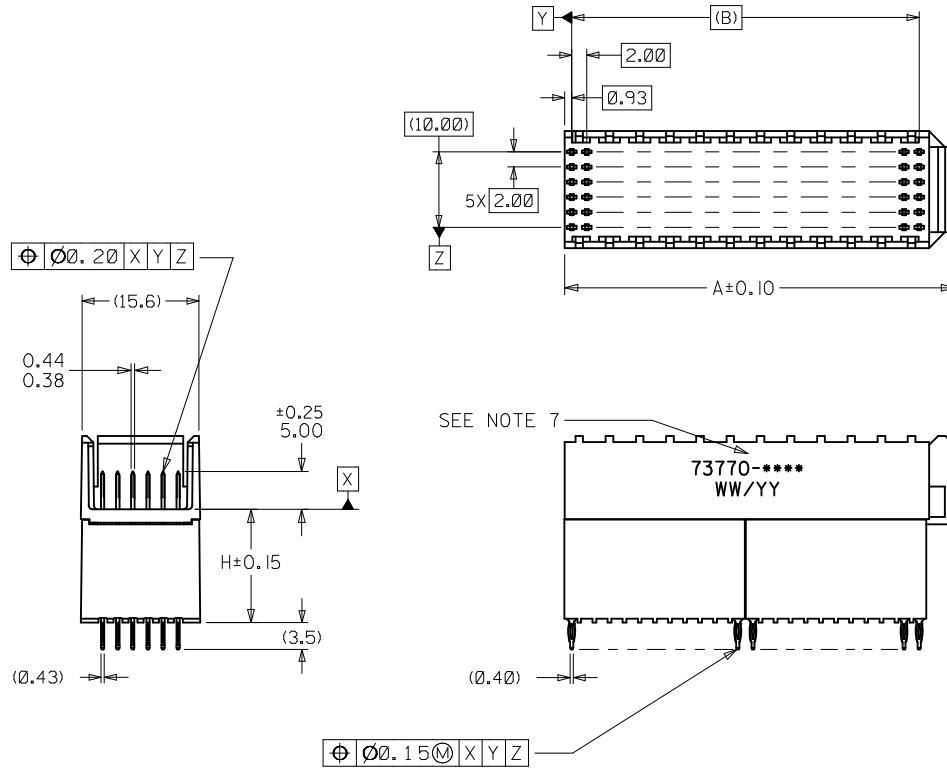


| ASSEMBLY P/N | TOTAL NUMBER OF SIGNAL CONTACTS | DIM "A" | DIM "B" | DIM "H" | PACKAGING SPECIFICATION |
|--------------|---------------------------------|---------|---------|---------|-------------------------|
| 73770-0109 | 72 | 27.6 | 22.00 | 15.05 | PK-70873-1873 |
| 73770-0209 | 72 | 27.6 | 22.00 | 6.05 | PK-70873-0875 |
| 73770-0309 | 72 | 27.6 | 22.00 | 10.05 | PK-70873-0871 |
| 73770-1109 | 144 | 51.6 | 46.00 | 15.05 | PK-70873-1873 |
| 73770-1209 | 144 | 51.6 | 46.00 | 6.05 | PK-70873-0875 |
| 73770-1309 | 144 | 51.6 | 46.00 | 10.05 | PK-70873-0871 |

NOTES:

1. MATERIALS: HOUSING-LIQUID CRYSTAL POLYMER (LCP), GLASS-FILLED UL 94V-0, COLOR: BLACK, TERMINAL: PHOSPHOR BRONZE
2. FINISH: SELECTIVE GOLD (Au) IN CONTACT AREA, 0.76 MICROMETER MINIMUM THICKNESS; SELECTIVE TIN (Sn) ON TAILS, 0.38 MICROMETER MINIMUM THICKNESS, NICKEL (Ni) UNDERPLATE OVERALL.
3. THIS PART CONFORMS TO MOLEX PRODUCT SPECIFICATION: PS-73780-999.
4. DIMENSIONS ARE IN MILLIMETERS
5. RECOMMENDED PCB THICKNESS: 2.50 MINIMUM
6. SEE TABLE FOR PACKAGING SPECIFICATION.
7. PART MARKED WITH PART NUMBER AND DATE CODE APPROXIMATELY WHERE SHOWN.



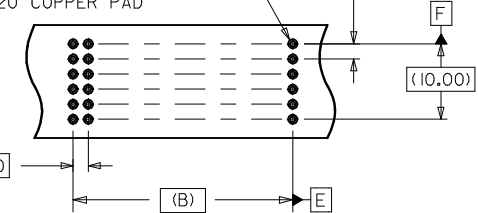
$\text{M} \text{ } \text{E} \text{ } \text{F}$

Ø 0.838 DRILL

Ø 0.80 PLATED THRU HOLE

0.65

Ø 1.20 COPPER PAD



BACKPLANE HOLE PATTERN

| REV | DESCRIPTION | QUALITY SYMBOLS | GENERAL TOLERANCES (UNLESS SPECIFIED) | | DIMENSION STYLE | | SCALE | DESIGN UNITS | THIRD ANGLE PROJECTION |
|--|---|--|---------------------------------------|-------|--|-----------------|---------------------------|---|------------------------|
| | | | mm | INCH | MM ONLY | DATE | | | |
| B1 | CHG 15mm PKG EC NO: UCP2013-1282 DRWING:MORGAN 2012/10/01 CHKD: APPR:SMILLER 2012/10/02 | $\nabla = 0$ $\nabla = 0$ $\nabla = 0$ | 4 PLACES ± --- | ± --- | DRAWN BY MIBARRA | DATE 05/07/06 | TITLE | SALES ASSY HDM BACKPLANE STACKING MODULE CLOSED END OPTION PRESSFIT | molex |
| | | | 3 PLACES ± --- | ± --- | CHECKED BY BSMART | DATE 05/07/06 | | | |
| | | | 2 PLACES ± 0.05 | ± --- | APPROVED BY SMILLER | DATE 2012/09/18 | | | |
| | | | 1 PLACE ± 0.10 | ± --- | MATERIAL NO. SEE TABLE | | DOCUMENT NO. SD-73770-002 | | |
| | | | 0 PLACE ± --- | ± --- | DRAFT WHERE APPLICABLE MUST REMAIN WITHIN DIMENSIONS | | | | SHEET NO. 1 OF 1 |
| <p>ANGULAR ±1/2°</p> <p>SIZE C THIS DRAWING CONTAINS INFORMATION THAT IS PROPRIETARY TO MOLEX INCORPORATED AND SHOULD NOT BE USED WITHOUT WRITTEN PERMISSION</p> | | | | | | | | | |