



## HDMI 14" Full HD LCD Screen Kit (1920x1080)

- COM-B016

A widescreen, full HD (1920x1080), 14" HDMI display that's great for DIY builds like arcade cabinets or pinball tables, or just as a big desktop display.

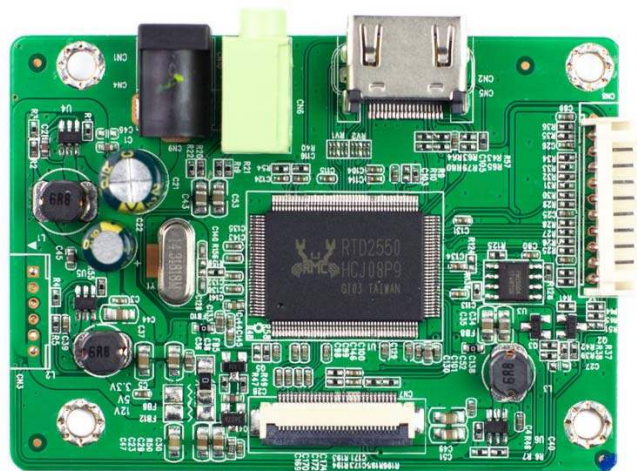
This kit comes with the display itself, driver board with ribbon cable, and a keypad with cable to control the display. Just supply your own 12V/1A barrel jack (5.5 / 2.5mm, centre-positive) power supply, and an HDMI cable, and you're good to go!

## Display features

- 1920x1080 resolution (16:9)
- ADS, wide-viewing angle display (170°)
- 60Hz refresh rate
- Contrast ratio: 800:1 (white:black)
- Brightness: 250 cd/m<sup>2</sup> (nits)
- Matte anti-glare finish
- Outer dimensions: 315.9×197.57×2.85mm
- Screen area: 309.31×173.99mm
- Weight: 280g

## Display driver board features

- HDMI input
- Power supply: 12V/1A barrel jack (5.5 / 2.5mm, centre-positive)
- Driver board dimensions: 77.5x58x15mm
- Keypad dimensions: 108x15x9mm





<https://shop.pimoroni.com/products/hdmi-14-full-hd-lcd-screen-kit-1920x1080/12-7-18>