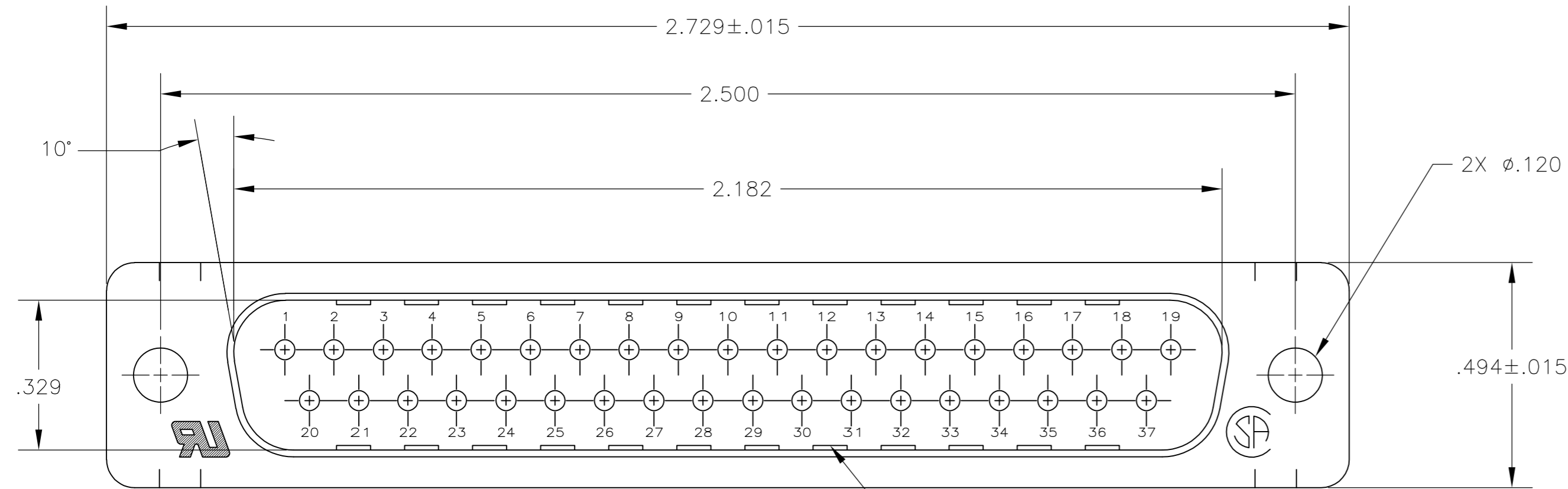
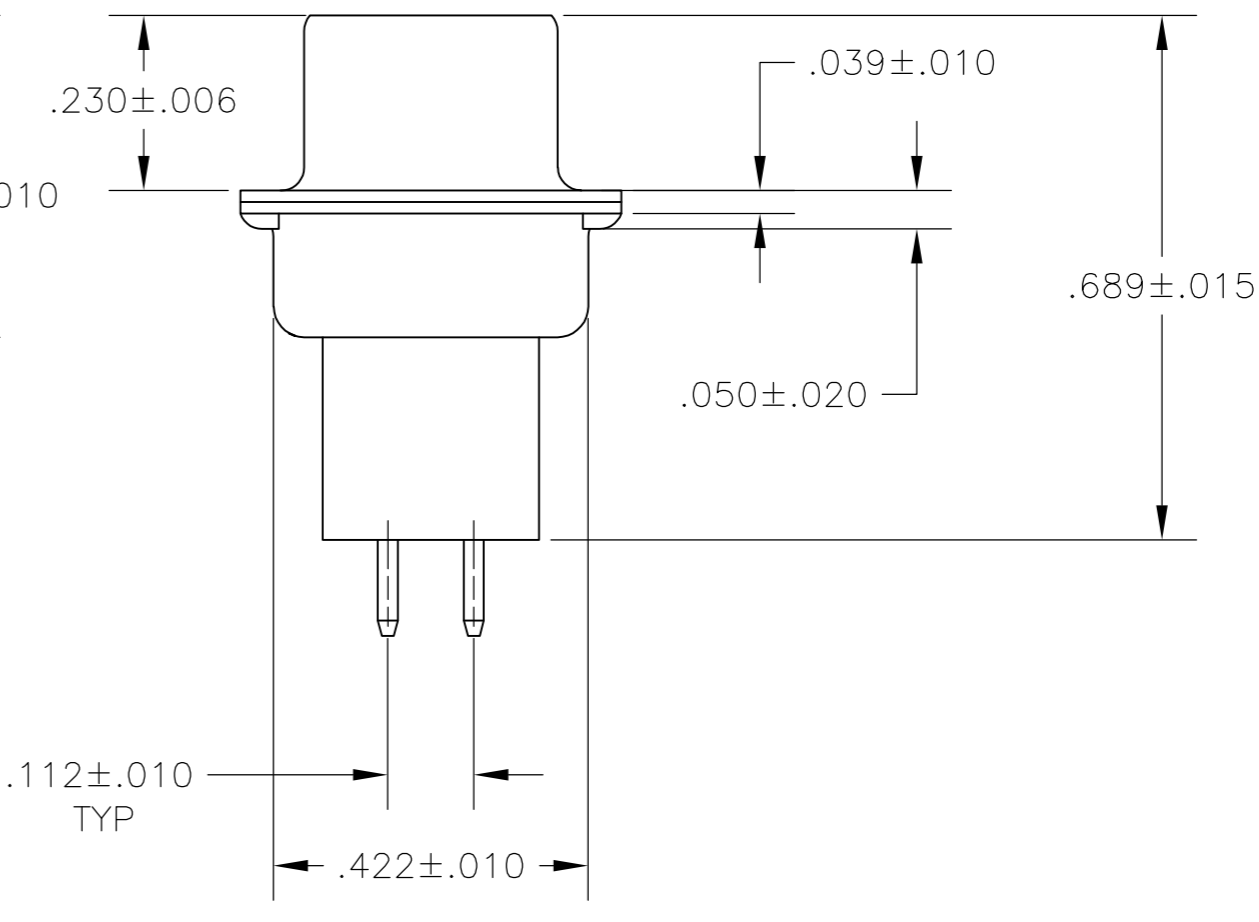
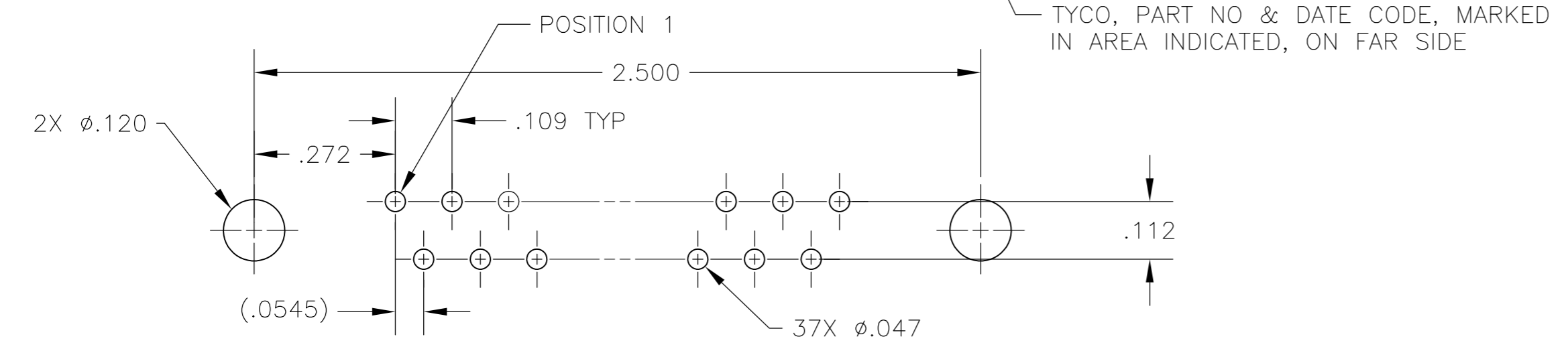
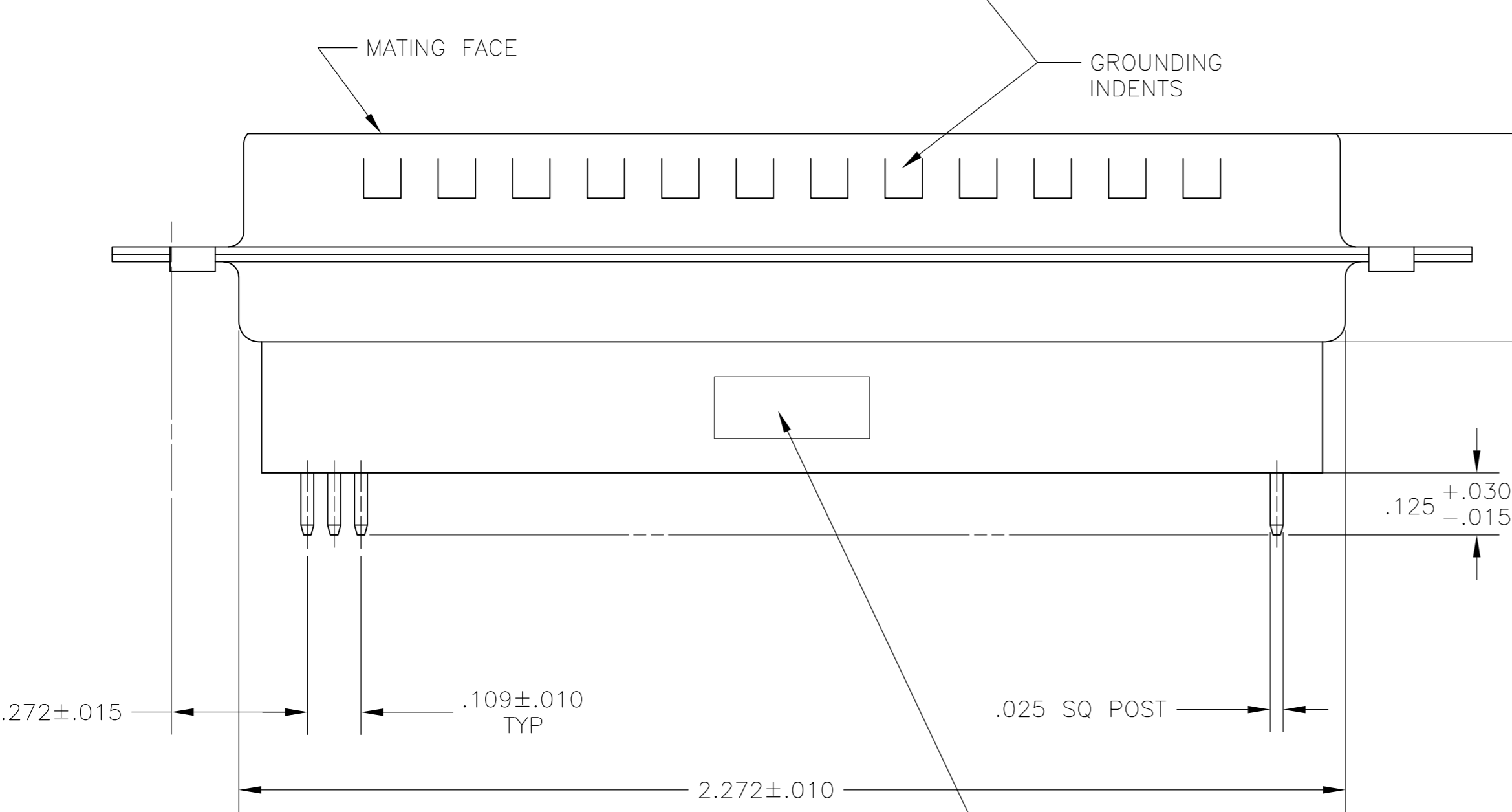


THIS DRAWING IS UNPUBLISHED. RELEASED FOR PUBLICATION
 © COPYRIGHT 2005 By - ALL RIGHTS RESERVED.

| LOC | | DIST | | REVISIONS | | | |
|-----|-----|---------------------------|-----------|-----------|------|--|--|
| P | LTR | DESCRIPTION | DATE | DWN | APVD | | |
| GP | 00 | | | | | | |
| | D | REVISED PER ECO-14-011808 | 11AUG2014 | AP | SB | | |



- 1 MOLDDED PARTS: GLASS-FILLED PBT OR GLASS-FILLED NYLON, UL94V-0 RATED. COLOR: BLACK.
SHELL: CARBON STEEL.
CONTACTS: BRASS.
- 2 SHELLS: .000200 MIN TIN OVER .000100 MIN COPPER.
CONTACTS: GOLD PLATING FOR A LENGTH OF .150 MIN FROM MATING END, .000030 MIN GOLD IN MATED AREA, .000100 MIN TIN ON SOLDER END, BOTH OVER .000050 MIN NICKEL.
-OR-
OLD FLASH OVER PALLADIUM-NICKEL PLATED FOR A LENGTH OF .150 MIN FROM MATING END, .000030 MIN TOTAL IN MATED AREA, .000100 MIN TIN ON SOLDER END, BOTH OVER .000050 MIN NICKEL.



5745413-1
PART NO

| | | | | | | | |
|--|--|------------------|----------|-------|-----------------|------------|--|
| THIS DRAWING IS A CONTROLLED DOCUMENT. | | DWN | 16SEPT05 | | TE Connectivity | | |
| DIMENSIONS: INCHES | | CHK | 16SEPT05 | | NAME | | |
| TOLERANCES UNLESS OTHERWISE SPECIFIED: | | APVD | 16SEPT05 | | PRODUCT SPEC | | |
| 0 PLC ± - 1 PLC ± - 2 PLC ± - 3 PLC ± .005 4 PLC ± - ANGLES ± - FINISH ± - | | APPLICATION SPEC | | | 108-40025 | | |
| MATERIAL | | WEIGHT | | SIZE | CAGE CODE | DRAWING NO | |
| 1 | | 2 | | A2 | 00779 | C=5745413 | |
| CUSTOMER DRAWING | | | | SCALE | SHEET | REV | |
| | | | | NTS | 1 of 1 | D | |