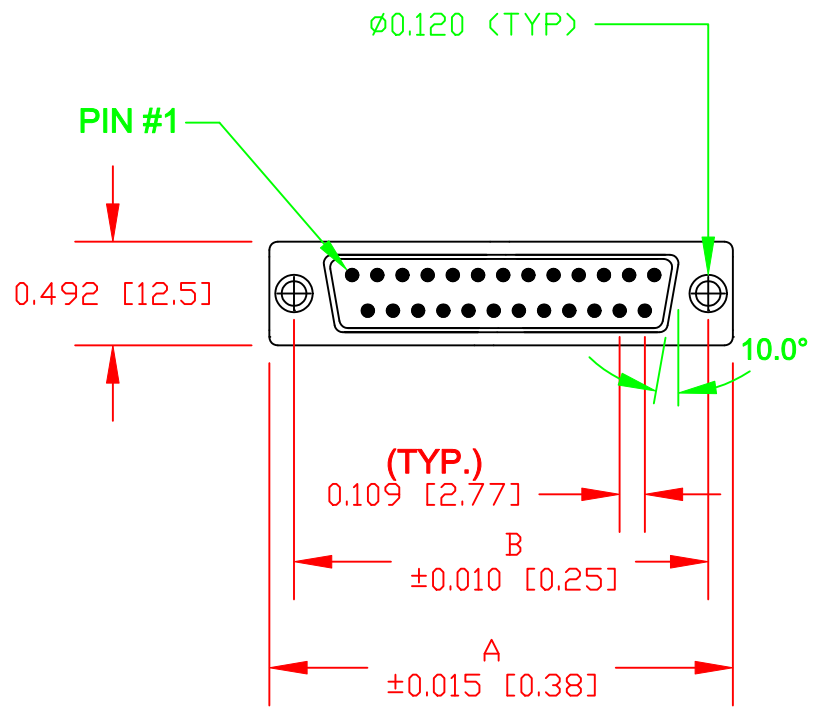
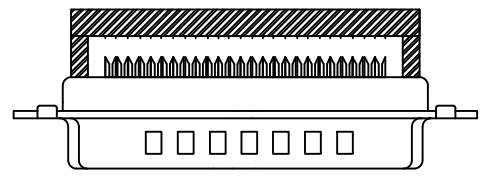
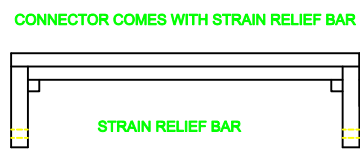
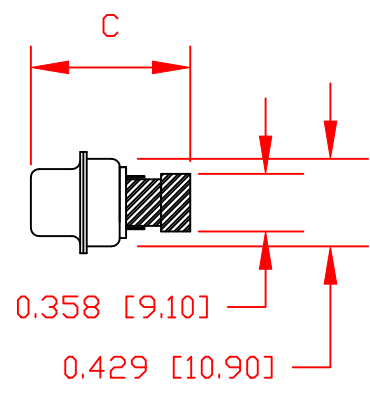


25 POSITION SHOWN FOR REFERENCE



TERMINATED



SPECIFICATIONS:

MATERIALS:

- SHELL: STEEL, TIN PLATED
- INSULATOR: UL 94V-0 RATED POLYESTER, GLASFILLED, BLACK
- CONTACTS: COPPER ALLOY

ELECTRICAL:

- CURRENT RATING: 1.5 AMP
- CONTACT RESISTANCE: 10 mOHMS MAX
- INSULTOR RESISTANCE: 5000 MOHMS MIN
- VOLTAGE: 500V AC FOR 1 MINUTE
- TEMPERATURE: -55°C TO +125°C

184AYYY-192LYY1

SERIES _____

POSITIONS _____

009 _____

015 _____

025 _____

037 _____

GENDER _____

1 = MALE

2 = FEMALE

TERMINATION _____

9 = IDC

SHELL PLATING _____

2 = TIN

HARDWARE OPTIONS _____

00 = NO HARDWARE

01 = .065 4-40 CLINCH NUT BOARD SIDE

PLATING OPTIONS _____

1 = GOLD FLASH

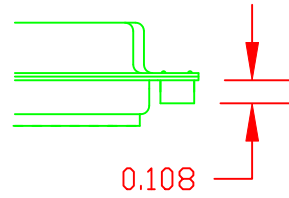
| | A | B | C CLOSED | C OPEN |
|----|----------------|----------------|----------------|----------------|
| 9 | 1.213 30.81 | 0.984 25.00 | 0.610 15.50 | 0.728 18.50 |
| 15 | 1.541 39.14 | 1.312 33.33 | 0.610 15.50 | 0.728 18.50 |
| 25 | 2.087 53.00 | 1.852 47.04 | 0.610 15.50 | 0.728 18.50 |
| 37 | 2.729 69.32 | 2.500 63.50 | 0.610 15.50 | 0.728 18.50 |

ACCEPTS: 28 AWG STRANDED .050" CENTER FLAT RIBBON CABLE


RoHS COMPLIANT

| | | | | |
|------------------|---|-------------------------|---------------------|-------------------|
| | THESE DRAWINGS AND SPECIFICATIONS ARE THE PROPERTY OF NorComp AND SHALL NOT BE REPRODUCED, COPIED OR USED AS THE BASIS FOR THE MANUFACTURE OF SALE OF APPARATUS WITHOUT WRITTEN PERMISSION. | | DRAWN: M. SIGMON | DATE: 04-05-11 |
| | | | CHECKED: | DATE: |
| <h1>NorComp</h1> | | SCALE: 1:1 | SHEET 1 OF 2 | REV 1 |
| | | DWG NO. 184AYYY-192LYY1 | | |

CLINCH-NUTS ARE 4-40 INTERNAL THREADS



01X108" (BOARD SIDE) - CN1

| | | | |
|--|---|---------------------|-------------------|
|  | THESE DRAWINGS AND SPECIFICATIONS ARE THE PROPERTY OF NorComp AND SHALL NOT BE REPRODUCED, COPIED OR USED AS THE BASIS FOR THE MANUFACTURE OF SALE OF APPARATUS WITHOUT WRITTEN PERMISSION. | DRAWN: M. SIGMON | DATE: 04-05-11 |
| | | CHECKED: | DATE: |
| NorComp | SCALE: | SHEET 2 OF 2 | REV 1 |
| | DWG NO. 184AYYY-192LYY1 | | |