

Customer Information Sheet

DRAWING No.: M22-636XXX SHEET 2 OF 2

IF IN DOUBT - ASK

©

NOT TO SCALE

THIRD ANGLE PROJECTION

ALL DIMENSIONS IN mm

ORDER CODE: **M22-636XXX**

No. OF CONTACTS PER ROW: 02 TO 20

FINISH:
42 - SELECTIVE GOLD FLASH & 100% TIN
46 - 100% TIN

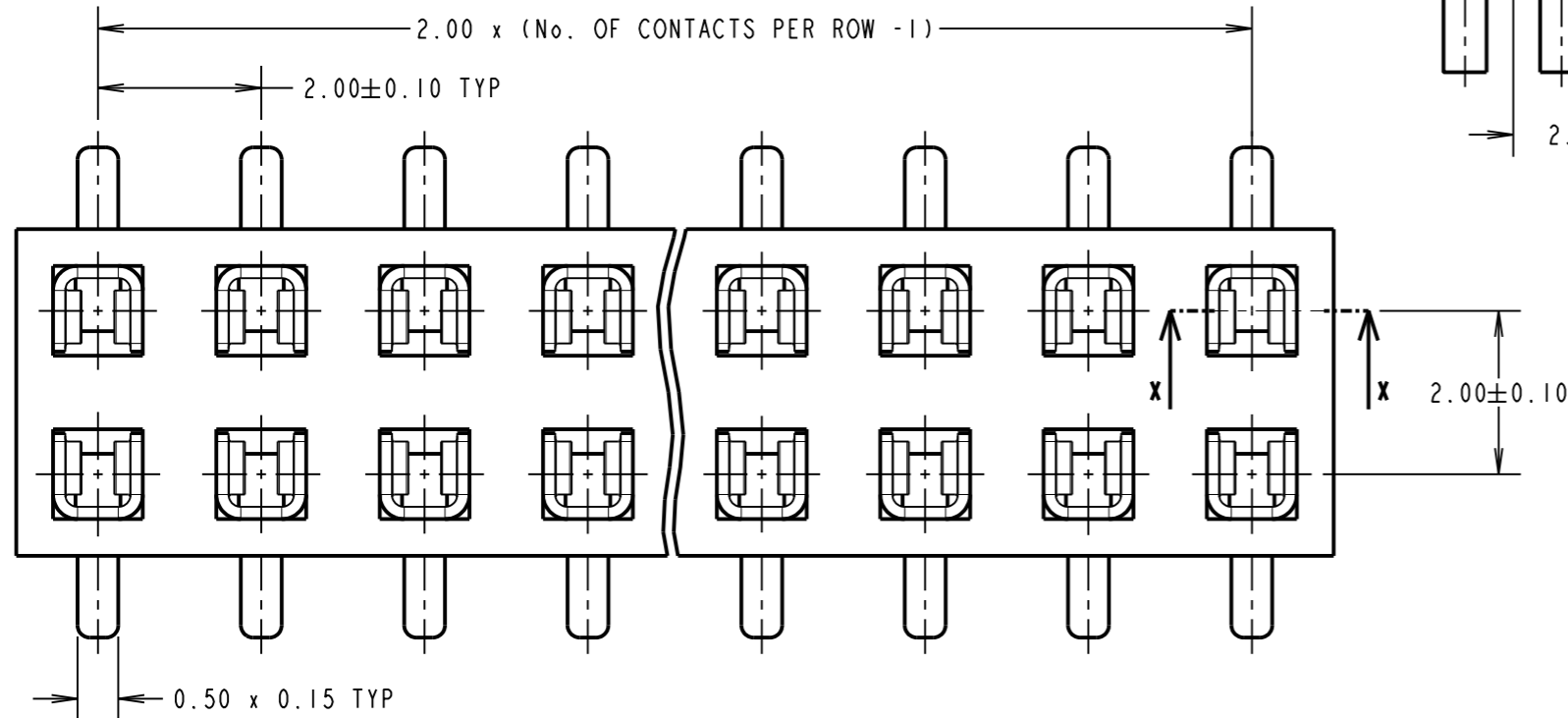
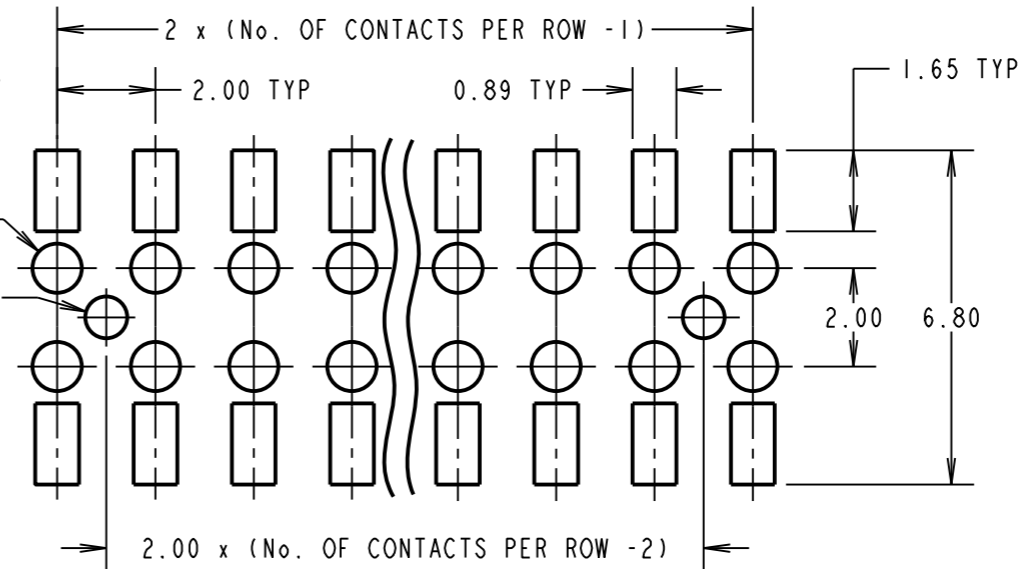
Active products:

M22-63603XX
M22-6360442
M22-63605XX
M22-63606XX
M22-6360742
M22-6360842
M22-6361042
M22-6361242

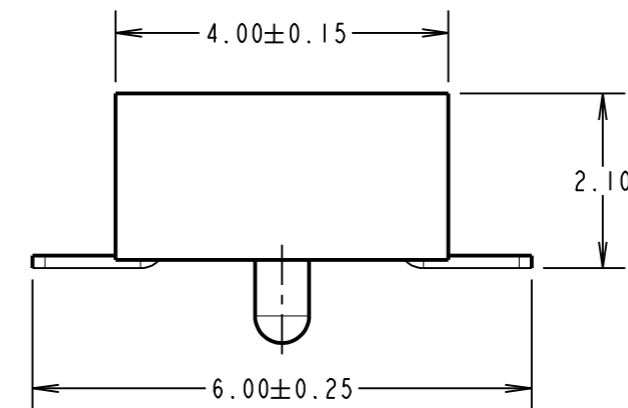
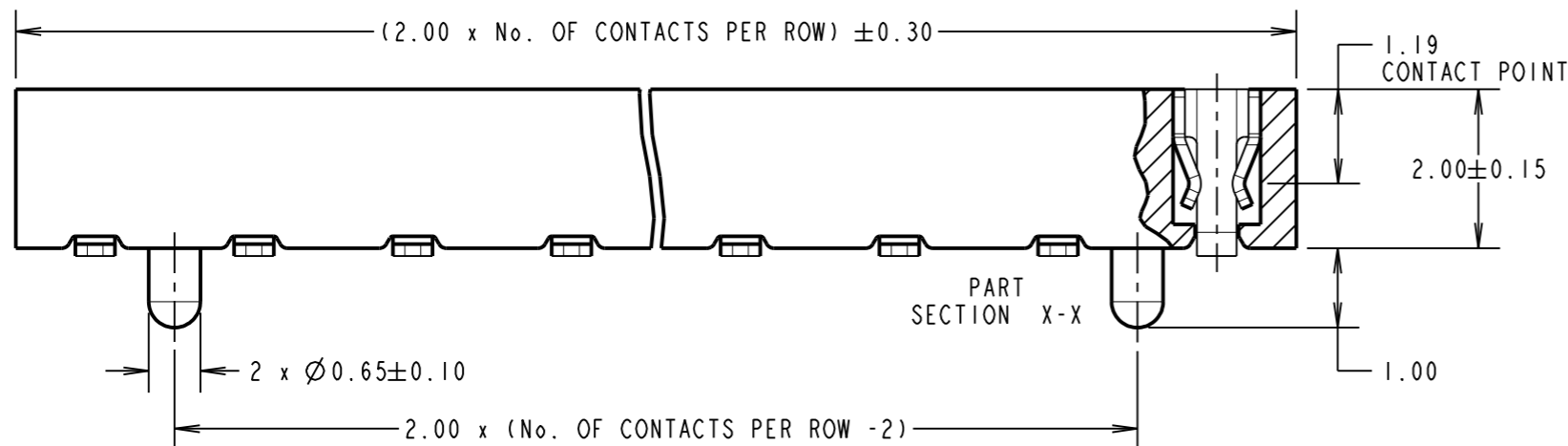
OBSOLETE
All other size/finish combinations not listed above

RECOMMENDED PCB LAYOUT
(TOLERANCE = ±0.05)

Ø 1.00 ± 0.05 TYP
Ø 0.85^{+0.05}₀ TYP



SPECIFICATION:
MATERIAL = PA9T, UL94V-0, BLACK
CONTACTS = PHOSPHOR BRONZE
FINISH:
42 = NICKEL ALL OVER WITH GOLD FLASH ON CONTACT AREA AND 100% TIN ON TAILS
46 = 100% TIN OVER NICKEL
ELECTRICAL:
CURRENT RATING = 2A
CONTACT RESISTANCE = 20mΩ MAX
INSULATION RESISTANCE = 1000MΩ MIN
DIELECTRIC WITHSTANDING = 500V AC MIN
MECHANICAL:
DURABILITY = 300 CYCLES MIN
INSERTION FORCE = 1.77N MAX
WITHDRAWAL FORCE = 0.25N MIN
ENVIRONMENTAL:
TEMPERATURE RANGE = -40°C TO +105°C
PACKING:
TUBE
FOR COMPLETE SPECIFICATION, SEE COMPONENT SPECIFICATION C018XX (LATEST ISSUE).



MSP	11	04.10.16	13421
NAME	ISS.	DATE	C/NOTE
APPROVED:		M.PERREN	
CHECKED:		S.BENNETT	
DRAWN:		D.BECK	
CUSTOMER REF.:			
ASSEMBLY DRG:			

NOTES:
1. ALL TOLERANCES ARE ±0.25, UNLESS OTHERWISE STATED.

HARWIN
www.harwin.com
technical@harwin.com

THIS DRAWING AND ANY INFORMATION OR DESCRIPTIVE MATTER SET OUT HEREON ARE CONFIDENTIAL AND COPYRIGHT PROPERTY OF THE HARWIN GROUP AND MUST NOT BE DISCLOSED, LOANED, COPIED OR USED FOR MANUFACTURING, TENDERING OR FOR ANY OTHER PURPOSE WITHOUT THEIR WRITTEN PERMISSION.

TOLERANCES
X = ±1mm
X.X = ±0.25mm
X.XX = ±0.10mm
X.XXX = ±0.01mm
ANGLES = ±5°
UNLESS STATED

MATERIAL:
SEE ABOVE
FINISH:
SEE ABOVE
S/AREA:
mm²

TITLE:
2mm PITCH DIL SMT VERTICAL LOW PROFILE SOCKET ASSEMBLY
DRAWING NUMBER:
M22-636XXX
SHT 2 OF 2