

## CERAMIC SMD LVDS OUTPUT OSCILLATOR (7.0 x 5.0 x 1.6mm)

### FEATURES:

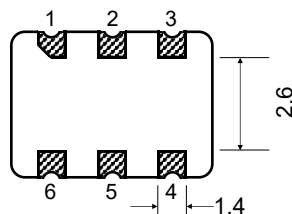
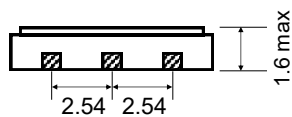
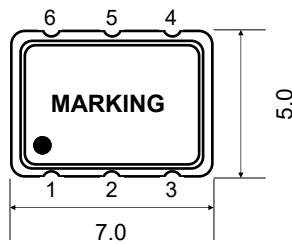
- HIGH FREQUENCY
- ULTRA LOW PHASE JITTER PERFORMANCE
- ENABLE / DISABLE



### ■ SPECIFICATION

<b>FREQUENCY RANGE</b>	1.8V: 13.5MHz ~ 212.5MHz	2.5V: 12MHz ~ 312.5MHz	3.3V: 12MHz ~ 800MHz
<b>FREQUENCY STABILITY</b>	±15ppm ~ ±100ppm		
<b>OPERATING TEMPERATURE RANGE</b>	STD: 0°C ~ 70°C, Option: -40°C ~ 85°C (See P/N guide for other options)		
<b>STORAGE TEMPERATURE RANGE</b>	-55°C ~ 125°C		
<b>SUPPLY VOLTAGE ± 10%</b>	1.8V	2.5V	3.3V
<b>SUPPLY CURRENT</b>	60mA max.	80mA max.	100mA max.
<b>LVDS OUTPUT</b>	<b>LOAD</b>	100Ω (Output - Complementary Output)	
	<b>LEVEL LOGIC '1' (V<sub>OH</sub>)</b>	1.4V <sub>DC</sub> typ. 1.6V <sub>DC</sub> max.	
	<b>LEVEL LOGIC '0' (V<sub>OL</sub>)</b>	1.1V <sub>DC</sub> typ. 0.9V <sub>DC</sub> min.	
	<b>DIFFERENTIAL OUTPUT VOLTAGE</b>	0.247V ~ 0.454V, 0.350V typ.	
	<b>OFFSET VOLTAGE</b>	1.125V ~ 1.375V, 1.25V typ.	
	<b>SYMMETRY(DUTY CYCLE)</b>	STD: 40% / 60%, Option: 45% / 55%	
	<b>RISE AND FALL TIME (Tr/Tf)</b>	250pS typ. 1nS max. @ 20% / 80%	
<b>START-UP TIME</b>	5mS typ. 10mS max.		
	<b>ENABLE (V<sub>IH</sub>)</b>	0.7 x V <sub>DD</sub> ≤ V <sub>IH</sub> ≤ V <sub>DD</sub> or N/C	
<b>STAND-BY VOLTAGE</b>	<b>DISABLE (V<sub>IL</sub>)</b>	V <sub>IL</sub> ≤ 0.3 x V <sub>DD</sub>	
	<b>AGING @ +25°C ±3°C</b>	±3.0ppm / 1 <sup>st</sup> year max., ±5.0ppm / 10 years max.	
<b>PHASE JITTER (12kHz ~ 20MHz)</b>	1.0pS max.		

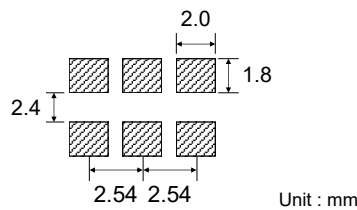
### ■ PACKAGE DIMENSIONS



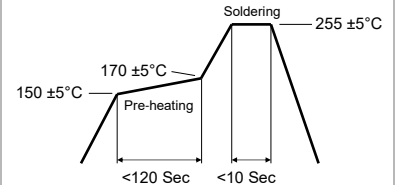
Unit : mm

Pin Configuration	
1	En/Dis or N.C.
2	En/Dis or N.C.
3	GND
4	Output
5	C - output
6	V <sub>DD</sub>

### ■ SOLDER PATTERN

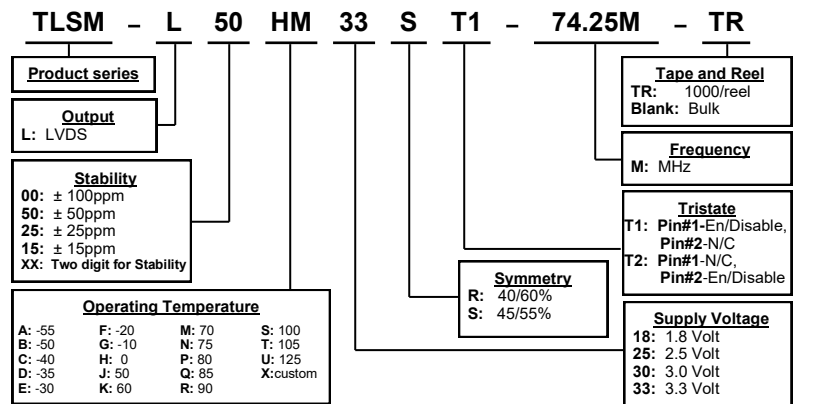


### ■ REFLOW PROFILE



Note: Consult factory for detail

### ■ PART NUMBERING GUIDE



Transko Electronics, Inc reserves the right to make changes to the product (s), service (s), and specification (s) described herein without notice. See "Terms of Sale" for details on our website.