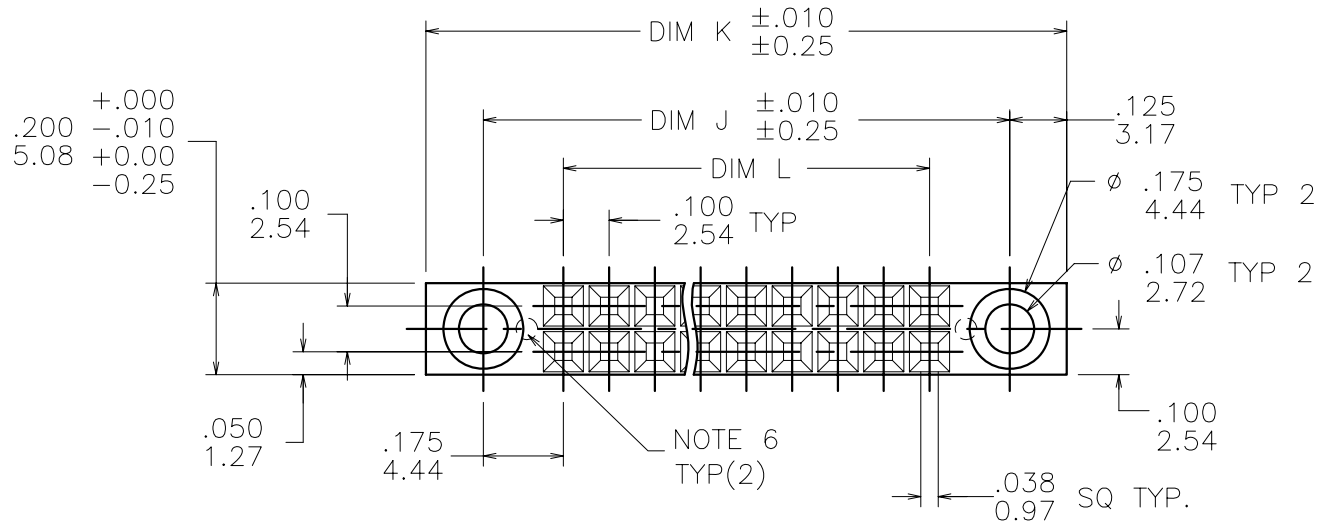
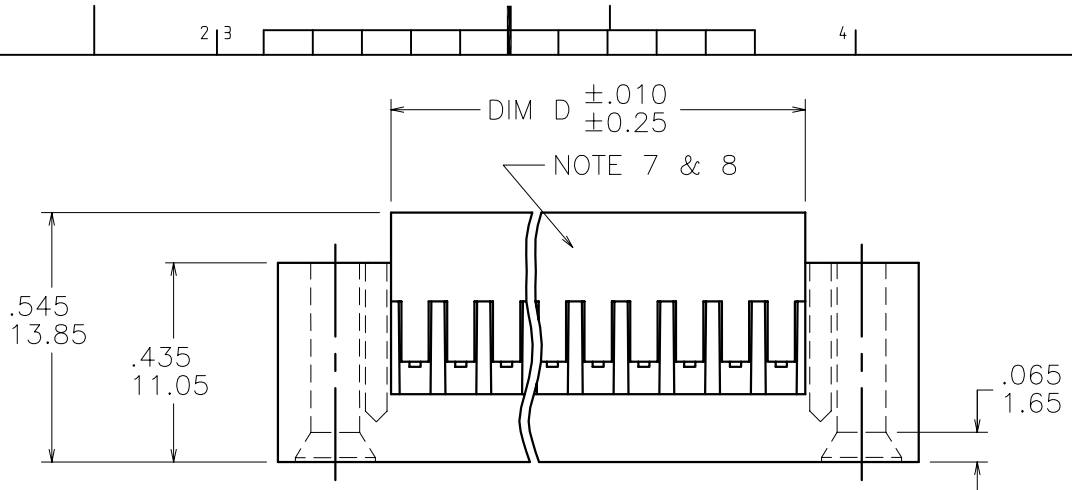


PRODUCT NUMBER
SEE TABLE



| | | | | | | | |
|---------------------------------------|----------|-----|------------|---------|--------------|-------------|--------------------------|
| mat'l. code SEE NOTE 1 | | | | surface | tolerance | projection | product family |
| tolerances unless otherwise specified | | | | | | | PV HOUSINGS |
| ltr | ec'n no | dr | date | angles | linear | INCH/MM | title |
| R | v07-0510 | HTB | 2007-08-03 | | | | MINI LATCH HOUSING DR |
| - | - | - | - | | | scale 2.5:1 | BULKHEAD .100 [2.54] CC |
| K | v92186 | RGD | 1999-12-13 | 0°±2' | | | |
| L | v03-1358 | PJ | 2004-02-09 | dr | A. RAISTRICK | 1991-02-14 | dwg no |
| M | v05-0714 | TAB | 2005-07-29 | engr | C. TREXLER | 1991-02-14 | sheet 1 of 3 |
| N | v06-0419 | HTB | 2006-05-03 | chr | C. TREXLER | 1991-02-14 | size |
| P | v06-0549 | HTB | 2006-06-12 | appd | C. TREXLER | 1991-02-14 | A3 |
| sheet | revision | R | R | R | | | type |
| index | sheet | 1 | 2 | 3 | | | Product Customer Drawing |



Copyright FCI

| PRODUCT NO. | NO OF POS | DIM L | DIM J | DIM K | DIM D |
|-------------|-----------|-------------|------------|------------|-------------|
| 65817-001LF | 2 X 8 | .700/17.78 | 1.05/26.7 | 1.30/33.0 | .805/20.45 |
| 65817-002LF | 2 X 10 | .900/22.86 | 1.25/31.8 | 1.50/38.1 | 1.005/25.53 |
| 65817-003LF | 2 X 13 | 1.200/30.48 | 1.55/39.4 | 1.80/45.7 | 1.305/33.15 |
| 65817-004LF | 2 X 16 | 1.500/38.10 | 1.85/47.0 | 2.10/53.3 | 1.605/40.77 |
| 65817-005LF | 2 X 20 | 1.900/48.26 | 2.25/57.2 | 2.50/63.5 | 2.005/50.93 |
| 65817-006LF | 2 X 22 | 2.100/53.34 | 2.45/62.2 | 2.70/68.6 | 2.205/56.01 |
| 65817-007LF | 2 X 2 | .100/2.54 | .45/11.4 | .70/17.8 | .205/5.21 |
| 65817-008LF | 2 X 3 | .200/5.08 | .55/14.0 | .80/20.3 | .305/7.75 |
| 65817-009LF | 2 X 4 | .300/7.62 | .65/16.5 | .90/22.9 | .405/10.29 |
| 65817-010LF | 2 X 5 | .400/10.16 | .75/19.1 | 1.00/25.4 | .505/12.83 |
| 65817-011LF | 2 X 6 | .500/12.70 | .85/21.6 | 1.10/27.9 | .605/15.37 |
| 65817-012LF | 2 X 7 | .600/15.24 | .95/24.1 | 1.20/30.5 | .705/17.91 |
| 65817-013LF | 2 X 9 | .800/20.32 | 1.15/29.2 | 1.40/35.6 | .905/22.99 |
| 65817-014LF | 2 X 11 | 1.000/25.40 | 1.35/34.3 | 1.60/40.6 | 1.105/28.07 |
| 65817-015LF | 2 X 12 | 1.100/27.94 | 1.45/36.8 | 1.70/43.2 | 1.205/30.61 |
| 65817-016LF | 2 X 14 | 1.300/33.02 | 1.65/41.9 | 1.90/48.3 | 1.405/35.69 |
| 65817-017LF | 2 X 15 | 1.400/35.56 | 1.75/44.5 | 2.00/50.8 | 1.505/38.23 |
| 65817-018LF | 2 X 17 | 1.600/40.64 | 1.95/49.5 | 2.20/55.9 | 1.705/43.31 |
| 65817-019LF | 2 X 18 | 1.700/43.18 | 2.05/52.1 | 2.30/58.4 | 1.805/45.85 |
| 65817-020LF | 2 X 19 | 1.800/45.72 | 2.15/54.6 | 2.40/61.0 | 1.905/48.39 |
| 65817-021LF | 2 X 21 | 2.000/50.80 | 2.35/59.7 | 2.60/66.0 | 2.105/53.47 |
| 65817-022LF | 2 X 23 | 2.200/55.88 | 2.55/64.8 | 2.80/71.1 | 2.305/58.55 |
| 65817-023LF | 2 X 24 | 2.300/58.42 | 2.65/67.3 | 2.90/73.7 | 2.405/61.09 |
| 65817-024LF | 2 X 25 | 2.400/60.96 | 2.75/69.9 | 3.00/76.2 | 2.505/63.63 |
| 65817-025LF | 2 X 26 | 2.500/63.50 | 2.85/72.4 | 3.10/78.7 | 2.605/66.17 |
| 65817-026LF | 2 X 27 | 2.600/66.04 | 2.95/74.9 | 3.20/81.3 | 2.705/68.71 |
| 65817-027LF | 2 X 28 | 2.700/68.58 | 3.05/77.5 | 3.30/83.8 | 2.805/71.25 |
| 65817-028LF | 2 X 29 | 2.800/71.12 | 3.15/80.01 | 3.40/86.36 | 2.905/73.79 |

NOTES

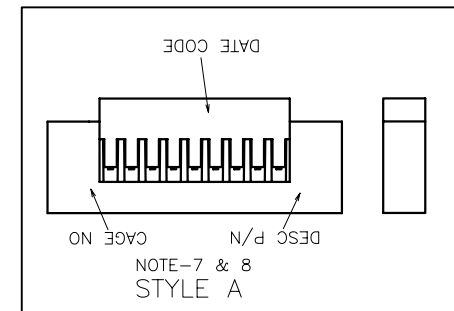
- ① MOLDING MATERIAL: MODIFIED POLYPHENYLENE ETHER, COLOR: BLACK, UL 94V-0.
2. PIN LENGTH TO BE .210/5.33 MIN. RECOMMENDED PIN LENGTH IS .225±.015/5.72±0.38.
3. TO REMOVE TERM PUSH TERM FORWARD, LIFT LATCH WITH HAND TOOL AS SHOWN IN FIGURES 2 & 3 ON TA-531. DAMAGE TO LATCH CAN OCCUR IF LIFTED MORE THAN A 25° ANGLE TO TOP OF HOUSING.
4. TERMINAL MUST BE CRIMPED PROPERLY FOR SATISFACTORY LATCHING. SEE TA-75 FOR CRIMPING INSTRUCTIONS. PRODUCT SPECIFICATION: BUS-12-067.
5. THE HOUSING IS INTENDED FOR USE WITH MINI PV™ TERMINALS WITH 22-32 GAUGE WIRE.
- ⑥ MOLD CORING HOLES (FOR MANUFACTURING PURPOSES ONLY.)
- ⑦ ALL MARKINGS FOR MILITARY PART NUMBERS ARE TO BE PER MIL-STD-1285. SEE TABULATION.
- ⑧ PLACE DESC P/N AND CAGE NO. ON PACKAGING LABEL. PRODUCT LENGTH IS TO SMALL TO MARK PART.
9. PRODUCT MEETS EUROPEAN UNION DIRECTIVES AND OTHER COUNTRY REGULATIONS AS DESCRIBED IN GS-22-008.
10. THE PRODUCT IS NOT INTENDED TO BE EXPOSED TO MANUFACTURING SOLDER PROCESS.



Copyright FCJ

| | | | | | | | | | |
|-------------|--------|----------------|------|---------------------------------------|--------------|-------------|--|--------------------------|--|
| mat'l. code | | surface | | tolerance | | projection | | product family | |
| SEE NOTE 1 | | ✓ | | tolerances unless otherwise specified | | ⊕ | | PV HOUSINGS | |
| ltr | ecn no | dr | date | angles | linear | INCH/MM | | title | |
| R | | | | 0°±2' | | scale 2.5:1 | | MINI LATCH HOUSING DR | |
| | | | | | | | | BULKHEAD .100 [2.54] CC | |
| | | | | dr | A. RAISTRICK | 1991-02-14 | | dwg no | |
| | | | | engr | C. TREXLER | 1991-02-14 | | sheet 2 of 3 | |
| | | | | chr | C. TREXLER | 1991-02-14 | | size | |
| | | | | appd | C. TREXLER | 1991-02-14 | | A3 | |
| sheet index | | revision sheet | | | | | | type | |
| | | | | | | | | Product Customer Drawing | |

| MILITARY PRODUCT NO. | MADE FROM | MARKING STYLE | DESC P/N | CAGE NO. | REMARKS |
|----------------------|-----------|---------------|----------|----------|------------|
| 65817-001-MIL | 65817-001 | A | 86108-16 | 22526 | SEE NOTE 8 |
| 65817-002-MIL | 65817-002 | A | 86108-20 | 22526 | |
| 65817-003-MIL | 65817-003 | A | 86108-26 | 22526 | |
| 65817-004-MIL | 65817-004 | A | 86108-32 | 22526 | |
| 65817-005-MIL | 65817-005 | A | 86108-40 | 22526 | |
| 65817-006-MIL | 65817-006 | A | 86108-44 | 22526 | |
| 65817-007-MIL | 65817-007 | A | 86108-04 | 22526 | |
| 65817-008-MIL | 65817-008 | A | 86108-06 | 22526 | |
| 65817-009-MIL | 65817-009 | A | 86108-08 | 22526 | |
| 65817-010-MIL | 65817-010 | A | 86108-10 | 22526 | |
| 65817-011-MIL | 65817-011 | A | 86108-12 | 22526 | |
| 65817-012-MIL | 65817-012 | A | 86108-14 | 22526 | |
| 65817-013-MIL | 65817-013 | A | 86108-18 | 22526 | |
| 65817-014-MIL | 65817-014 | A | 86108-22 | 22526 | |
| 65817-015-MIL | 65817-015 | A | 86108-24 | 22526 | |
| 65817-016-MIL | 65817-016 | A | 86108-28 | 22526 | |
| 65817-017-MIL | 65817-017 | A | 86108-30 | 22526 | |
| 65817-018-MIL | 65817-018 | A | 86108-34 | 22526 | |
| 65817-019-MIL | 65817-019 | A | 86108-36 | 22526 | |
| 65817-020-MIL | 65817-020 | A | 86108-38 | 22526 | |
| 65817-021-MIL | 65817-021 | A | 86108-42 | 22526 | |
| 65817-022-MIL | 65817-022 | A | 86108-46 | 22526 | |
| 65817-023-MIL | 65817-023 | A | 86108-48 | 22526 | |
| 65817-024-MIL | 65817-024 | A | 86108-50 | 22526 | |
| 65817-025-MIL | 65817-025 | A | 86108-52 | 22526 | |
| 65817-026-MIL | 65817-026 | A | 86108-54 | 22526 | |
| 65817-027-MIL | 65817-027 | A | 86108-56 | 22526 | |



FCconnect.com

Copyright FCJ

| | | | | | |
|---------------------------|----------------|--|--------------|---|--|
| mat'l. code SEE NOTE 1 | | surface <input checked="" type="checkbox"/> | tolerance | projection | product family PV HOUSINGS |
| ltr | ecrn no | dr | date | tolerances unless otherwise specified | title |
| R | | | | angles linear XX+01/XX+3 XXX+005/XXX+13 XXXXX+0020/XXX+051 | MINI LATCH HOUSING DR BULKHEAD .100 [2.54] CC |
| | | | | 0'+2' | INCH/MM scale 2.5:1 |
| | | dr | A. RAISTRICK | 1991-02-14 | dwg no 65817 |
| | | engr | C. TREXLER | 1991-02-14 | sheet 3 of 3 |
| | | chr | C. TREXLER | 1991-02-14 | size A3 |
| | | appd | C. TREXLER | 1991-02-14 | type Product Customer Drawing |
| sheet index | revision sheet | | | | |