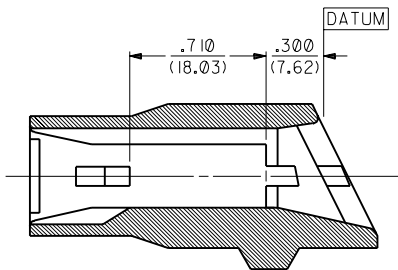


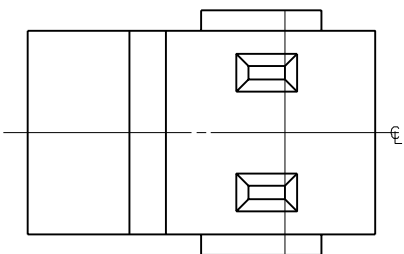
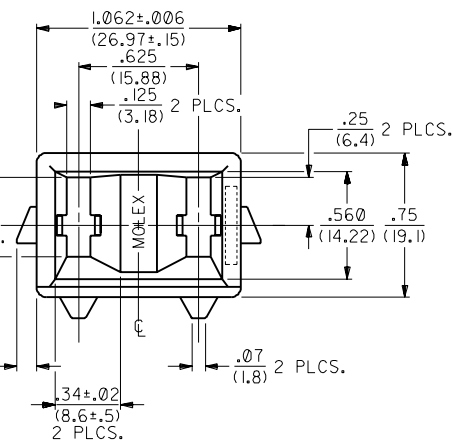
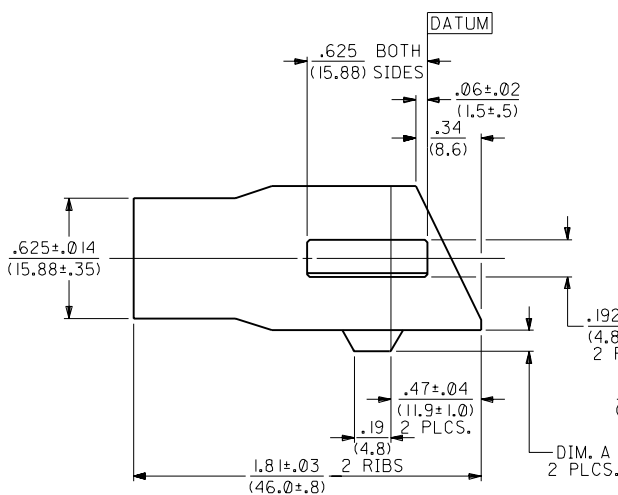
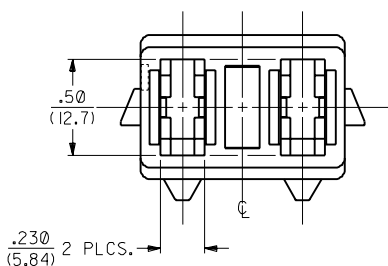
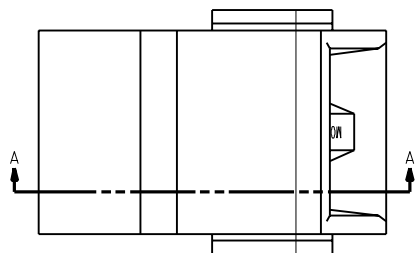
13	12	11	10	9	8	7	6	2481	4	3	2	1
PART NO.	ENG. NO.	DIMENSION A										
050-16-0281	2481	.110 (2.79)										
050-16-0282	2481-15	.075 (1.91)	<b>OBSOLETE</b>									

**NOTES:**

1. THIS HOUSING IS FOR USE WITH THE 6482 TYPE TERMINALS AND ASSEMBLES TO THE 2589-• MOUNTING CLIPS.



SECTION A-A  
TYPICAL CORE



**MATERIAL:**

PHENOLIC, MINERAL FILLED, 94V-0,  
COLOR: BLACK.  
PLENCO#4002  
(REF.: SMES-128E-6)

AC	OBSOLETE P/N UGR2002-0255 01/9/13 COMERCI
AB	REVISED ECN US 1011 04/06/95 RHR
AA	REDRAWN & REVISED ECN US 0525 11/29/94 RHR

DIMENSIONS SHOWN (METRIC) INCH UNLESS OTHERWISE SPECIFIED TOLERANCES ANGULAR ± DMS 5°		▽ = 0 ▽ = 0		REVISE ONLY ON CAD SYSTEM	
INCH METRIC		TITLE HOUSING, RECEPTACLE, 2 CIRCUIT			
3 PLACE ± .010	---	MOLEX INCORPORATED		SHEET NO.	DATE
2 PLACE ± .014 ± 0.25	---	L1SLEJLL 60532		1 of 1	10/04/94
1 PLACE --- ± 0.35	---	PART NO. SD-2481-•			
DRAFT WHERE APPLICABLE MUST REMAIN WITHIN DIMENSIONS		DRWG. NO.			
DRW. BY RHR	CHK'D BY WRL	SEE CHART		SD-2481-•	
APP'D BY WRL	SCALE 2: 1	FILE NAME S2481X1 DGN	THIS DRAWING CONTAINS INFORMATION THAT IS PROPRIETARY TO MOLEX INC. AND SHOULD NOT BE USED WITHOUT WRITTEN PERMISSION.		DIV. CP