

1

2

3

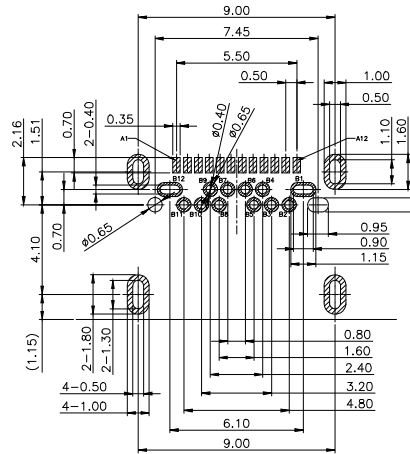
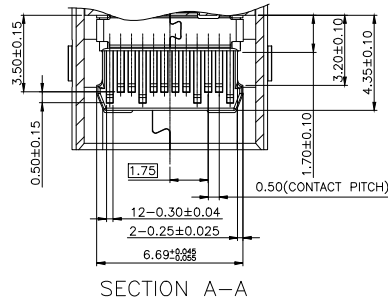
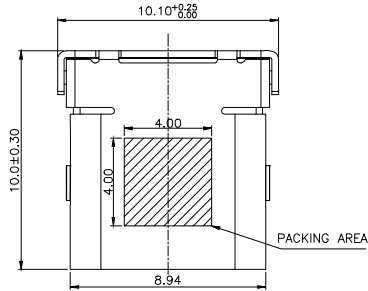
4

5

6

7

A



NOTES:

1.MATERIAL:  
 MOLDING: LCP UL94 V-0 Black  
 CONTACT:COPPER ALLOY.  
 GOLD 30u" CONTACT AREA,100u"  
 Min TIN (LEAD FREE) ON SOLDER AREA,  
 SHELL: SUS304-H,T=0.30±0.03mm  
 50u" NICKEL PLATING OVER ALL.  
 SHILD:SUS304-H,T=0.12±0.03mm

2.MECHANICAL:  
 INSERTION: 5~20N.  
 EXTRACTION: 8~20N.  
 DURABILITY: 10000 CYCLES

3.ELECTRICAL:  
 CURRENT: 5A FOR VBUS; 1.25A FOR GND  
 0.25A MIN FOR OTHER.  
 VOLTAGE: 20 V MAX  
 WITHSTANDING VOLTAGE: 100V AC.  
 CONTACT RESISTANCE: 40mΩ MAX.  
 INSULATION RESISTANCE: 100MΩ MIN.

4.ENVIRONMENTAL  
 TEMPERATURE RANGE -55°C ~ +85°C  
 Packing:Tape & Reel

A

B

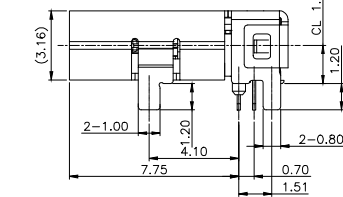
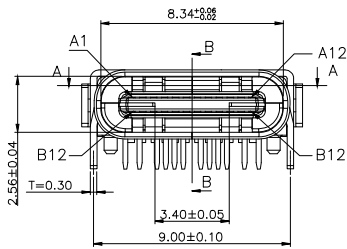
B

C

C

D

D



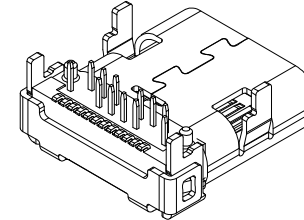
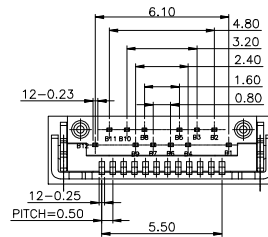
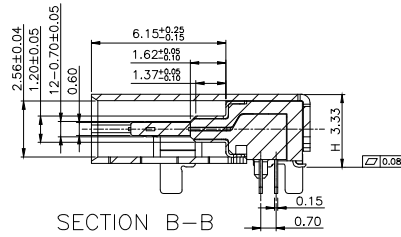
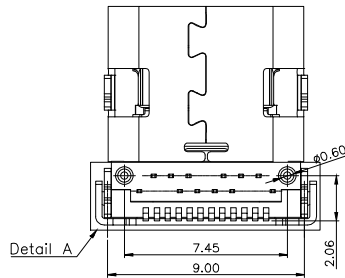
Recommended PCB layout  
 Tolerance for PCB layout ±0.05  
 Keep out area

E

E

F

F



A		B	
1	GND	12	GND
2	TX+	11	RX-
3	TX-	10	RX+
4	VBUS	9	PWR
5	CC	8	SBU2
6	D-	7	D+
7	D+	6	D-
8	SBU1	5	Vconn
9	VBUS	4	PWR
10	RX+	3	TX+
11	RX-	2	TX-
12	GND	1	GND

**RoHS compliant**  
 Unit: mm

Scale	Free				Date	Name	Customer-No.
③	TOLERANCE				Drawn	16.02.2016	Winnie
X.	±0.38				Approved	20.06.2017	Fred
X.X	±0.25	③	Change of production plant	04.01.2019	Xavier		
X.XX	±0.13	②	Change current rating from 3A to be 5A	20.06.2017	Fred		
DIM	TOL	①	Update the P/N&Electrical data&Packing	02.08.2016	Winnie		
X.°	±3°	①	Drawn	16.02.2016	Winnie		
.X°	±1°						
③	Angle	TOL	Id.	Modification	Date	Name	



ASSMANN WSW-No. ① AUSB1-DFN-PTR9	
Drawing-No.	ASS 7158 CO rev03
Replace	Sheet 1/1

1

2

3

4

5

6

7

G

G

H

H