

**MATERIAL AND FINISH:**

Insulator: PBT, black, UL-94V-0

Contacts: Brass, Nickel plated

Terminals: Brass, Tin plated

**ELECTRICAL SPECIFICATIONS:**

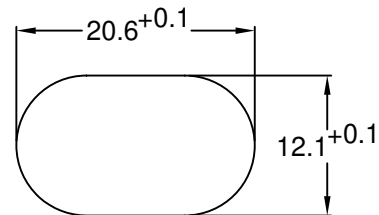
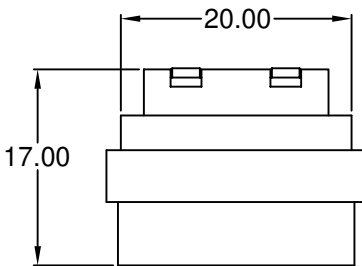
Rated current: 2.5A

Rated voltage: 250VAC



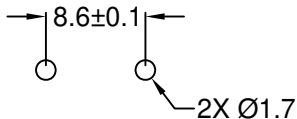
Insulation resistance: 100 Mohm min. @ 500VDC

Dielectric withstanding voltage: 2000VAC for one minute

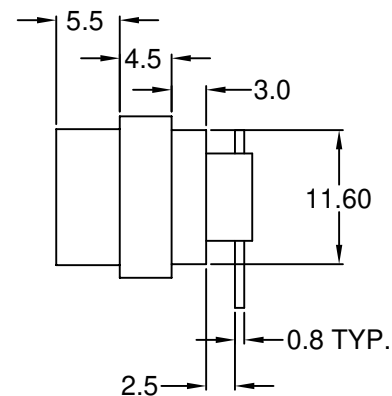
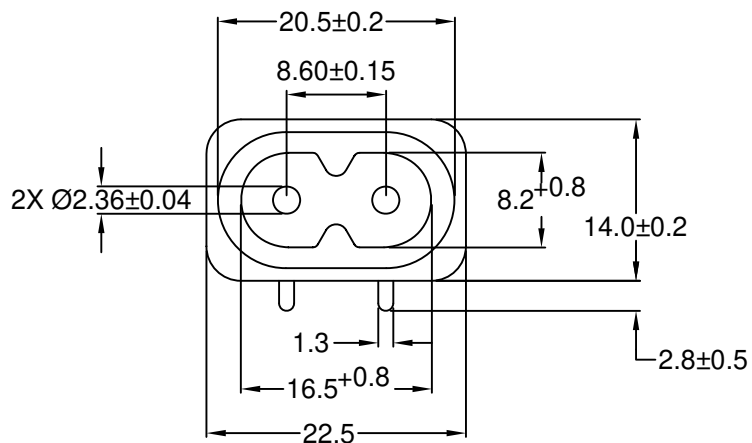


RECOMMENDED  
PANEL CUTOUT

RoHS  
COMPLIANT



RECOMMENDED  
PCB LAYOUT (TOP VIEW)



REVISIONS

REV	DATE	CHANGE	CHNG	CHK	APPR
B	10/01	REMOVE SOLDER TABS	LH		KH
C	10/14	ADD DIM. SIDE VIEW	LH		KH
D	10/28	UPDATE HOLE SIZE	LH		KH
E	9/29/98	REDRAWN & UPDATED	LH		KH
F	5/9/00	REVISED & UPDATED	TD	JJ	SS
G	11/21/01	REVISED / UPDATED	GQ	TD	PB

TOLERANCE UNLESS OTHERWISE SPECIFIED	
X	± 1
X.X	± 0.4
X.XX	± 0.20
DRAWN BY	LFH
DATE:	09/29/98
CHECK BY	AH
DATE:	9/29/98
APPR BY	SS
DATE:	9/29/98

**Power Dynamics, Inc.**

Phone: 973 560-0019 Whippany, New Jersey Fax: 973 560-0076

PART: MINIATURE IEC 60320 C8 APPL. INLET; MATING  
FACE EXTENDED 5.5mm FROM FLANGE, PCB MOUNT

42R51-5123 SHEET 1 of 1

SIZE: A ALL DIMENSIONS FOR REFERENCE ONLY  
SCALE: NTS DIMENSIONS ARE IN MILLIMETERS REV: G