

NOTES:

1. ONLY THE ITEMS WITH QUANTITIES SPECIFIED ON PARTS LIST ARE USED ON THIS APPLICATOR.

2 USED IN PLACE OF ITEM 38 WHEN INSULATION CRIMP IS NOT USED.

3 GUARD MUST BE IN PLACE WHEN OPERATING APPLICATOR IN AMP-O-LECTRIC PRESS.

4 CUT TO LENGTH AT ASSY.

5 SEE DWGS FOR COMPONENTS.

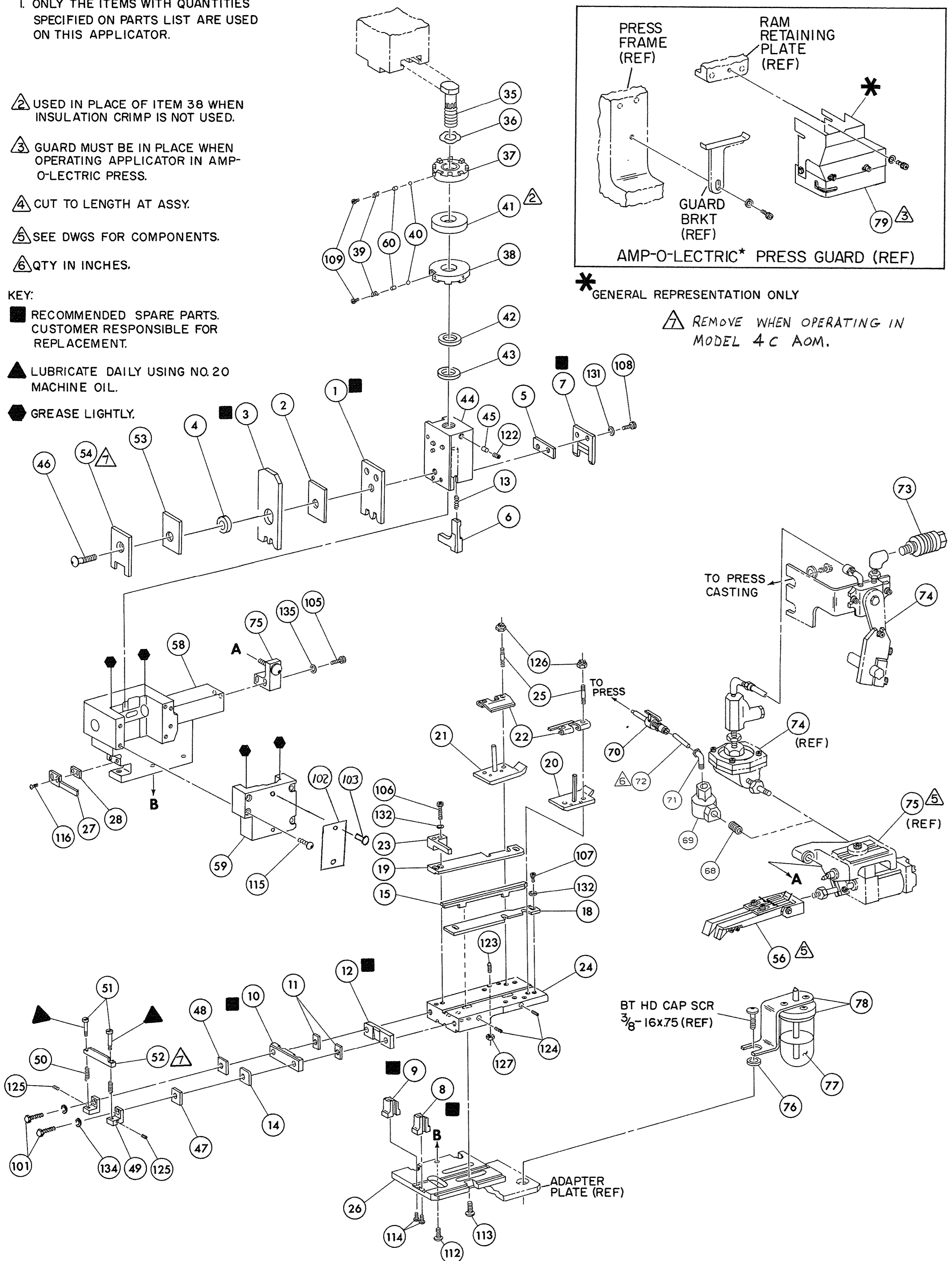
6 QTY IN INCHES.

KEY:

RECOMMENDED SPARE PARTS. CUSTOMER RESPONSIBLE FOR REPLACEMENT.

LUBRICATE DAILY USING NO. 20 MACHINE OIL.

GREASE LIGHTLY.



145	1	458268-1	CAP, RAM	59
144	1	458267-1	HOUSING	58
143				57
142	1	460680-3	FEED FINGER ASSY	56
141				55
140	1	461172-1	DEPRESSOR, WIRE	54
139	1	2-455888-5	SPACER, WIRE DEPRESSOR	53
138	1	461171-1	SUPPORT, WIRE	52
137	2	461170-1	SCREW, WIRE SUPPORT	51
136	2	22280-3	SPRING, WIRE SUPPORT	50
135	2	461173-1	HOLDER, WIRE SUPPORT	49
134	1	3-240645-4	SPACER, WIRE SUPPORT (LEFT)	48
133			SPACER, WIRE SUPPORT (RIGHT)	47
132	1	7-21002-9	BOLT, CRIMPER	46
131	1	690191-1	PLUG, NYLON	45
130	1	458266-1	RAM	44
129	1	690125-1	WASHER, LAMINATED	43
128	1	690124-1	WASHER, RAM	42
127	1	690223-1	SPACER, DISC	41
126	1	23241-6	BALL, STEEL	40
125	1	690170-1	SPRING, COMPRESSION	39
124			DISC, INSULATION	38
123	1	8-690141-1	DISC, WIRE	37
122	1	22480-5	WASHER, SPRING	36
121	1	690212-1	POST, RAM	35
120				34
119				33
118				32
117				31
116				30
115				29
114	1	3-690451-2	SPACER, STRIPPER	28
113	1	458265-1	STRIPPER	27
112	1	458263-1	PLATE, BASE	26
111	4	22354-7	DRAG, STUD	25
110	1	458262-1	PLATE, STRIP GUIDE	24
109	1	458261-1	PLATE, STRIP HOLD	23
108	2	461389-1	SPRING, DRAG	22
107	1	458260-1	DRAG, STOCK (LEFT)	21
106	1	458259-1	DRAG, STOCK (RIGHT)	20
105	1	458256-6	GUIDE, STRIP (LEFT)	19
104	1	458256-6	GUIDE, STRIP (RIGHT)	18
103				17
102				16
101	1	238175-7	GUIDE, CENTER STRIP	15
REF	79	2-690481-0	SPACER, HOLD DOWN	14
	78	23846-1	SPRING, HOLD DOWN	13
	77	458255-1	PLATE, REAR SHEAR	12
	76		SPACER, SHEAR PLATE	11
1	75	458254-4	PLATE, FRONT SHEAR	10
	74	693302-6	ANVIL, LEFT	9
	73	693302-6	ANVIL, RIGHT	8
15"	72	458253-5	BLADE, SLUG	7
	71	458252-1	HOLD DOWN, TERMINAL	6
1	70	2-238075-9	SPACER, SHEAR BLADE	5
1	69		SPACER, TUBULAR	4
1	68		CRIMPER, INSULATION	3
	67		SPACER, INSULATION	2
66	1	2-458249-9	CRIMPER, WIRE	1

65	QTY	PART NO	DESCRIPTION	ITEM NO
64				
63				
62		694925-4	REEL BRKT CONVERSION ASSY	
61				
60		690603-1	SPRING ASSIST	

REMARKS		NO	REV
APPL USED ON		MACH SERIAL NO	DISTRIBUTION
CUSTOMER NAME		APPL SERIAL NO	ORIGINAL
ADDRESS		PURCHASE ORDER	CUSTOMER COPY
CITY		ENG APP	FIELD ENG COPY

CRIMPING DATA								APPLICATOR WILL APPLY	
PAD	CRIMP HEIGHT	WIRE SIZE	WIRE RANGE					61012	
LTR	LEFT	RIGHT	LEFT	RIGHT	LEFT	RIGHT	18-14	62931	
A	.071		14		RIGHT			1217530	
B	.061		16		INSUL RANGE				
C	.055		18		LEFT				
D	NOT USED				RIGHT				
CRIMP	SIZE	TYPE	CRIMP	SIZE	TYPE	FEED			
WIRE	LEFT	RIGHT	INSUL	LEFT	RIGHT	LEFT	RIGHT	.700	
	100	F		#	#				
PRESS REF	#		APPL INST	A1		8046			

SET UP PAGE	10-1	147A
DRG-13-80	APP 2/27/80	
CHK 2/28/80	REL 3/1/80	
NAME	MINIATURE QUICK CHANGE APPLICATOR	
END FEED, DUAL (109 DIA. PIN RECEPT.)		

THIS DRAWING IS A CONTROLLED DOCUMENT

RELEASED FOR PUBLICATION JULY 1988
BY AMP INCORPORATED. ALL RIGHTS RESERVED
© Copyright 1988