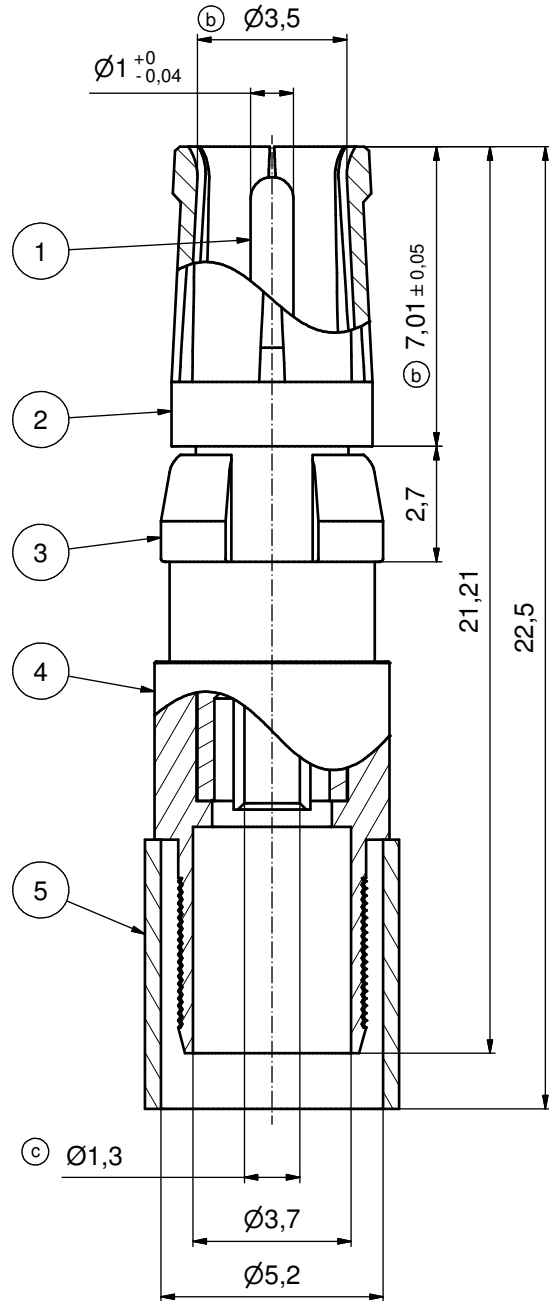
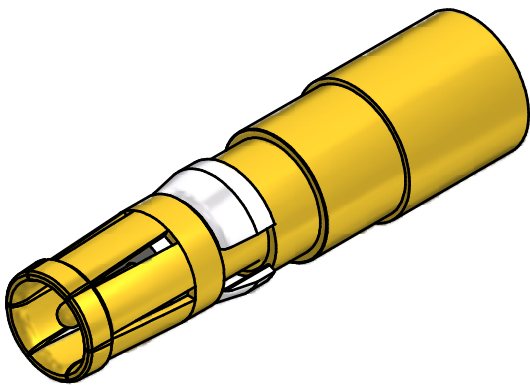
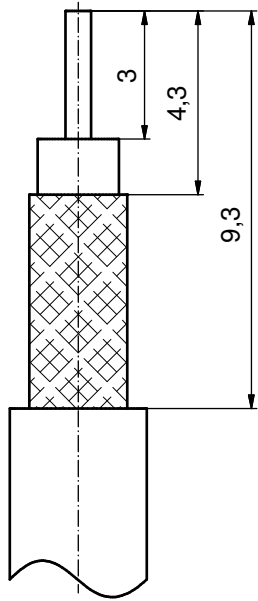


**(b) STRIPPING DIMENSIONS**



**(b) ASSEMBLY TOOLING:**

1. CENTER CONTACT:  
USE CRIMP TOOL: 360X10329X  
WITH TOOL INSERT: 360X11049X  
SELECTOR SETTING: 6 (FOR AWG20 CENTER CONDUCTOR OF CABLE)
2. CRIMP FERRULE:  
USE CRIMP TOOL: 360X10519X  
WITH TOOL INSERT: 360X11029X  
INSERT CAVITY A: HEX 5.41/.213

Part no.	Finish Pos.1	Finish Pos.2	Finish Pos.3	Finish Pos. 4/5
132J21039X	min. 50µin HARD GOLD over min. 50µin NICKEL	min. 30µin HARD GOLD over min. 50µin NICKEL	NICKEL PLATED	GOLD FLASH over NICKEL
132A21039X	GOLD FLASH over NICKEL	GOLD FLASH over NICKEL	NICKEL PLATED	GOLD FLASH over NICKEL

Directive 2002/95/EC RoHS compliant

THIS DRAWING MAY NOT BE COPIED OR REPRODUCED IN ANY WAY, AND MAY NOT BE PASSED ON TO A THIRD PARTY WITHOUT WRITTEN PERMISSION. OWNERSHIP AND COPYRIGHT OF CONEC GmbH  DO NOT ALTER CAD DRAWING BY HAND	tolerance					scale: 8:1		
	ISO 2768-c					material: COPPER ALLOY (Pos.1 - 5)		
	date				name		title:	
	drawn 23.11.06				Schmidt		COAXIAL CONTACT SOCKET 50 OHM	
	appd. 23.11.06				Mickenbecker		Inner + outer conductor for crimp termination for cable 58C/U, 141A/U	
norm						dwg no: Inventor 10		
2 x c	Ä5380	02.10.2014	K.H.	d-old			DIN-A3	
6 x b	Ä 3774	12.10.10	HS			13K2A037A		
a	Origin					sh: 1		
rev.	description	date	name			part no: see table		