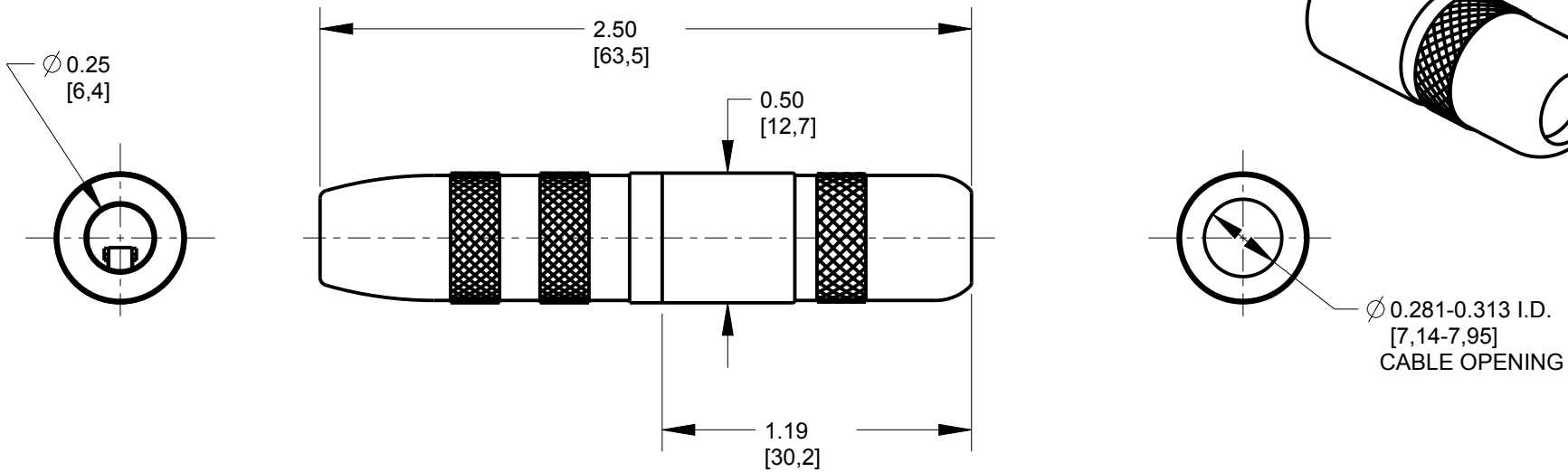
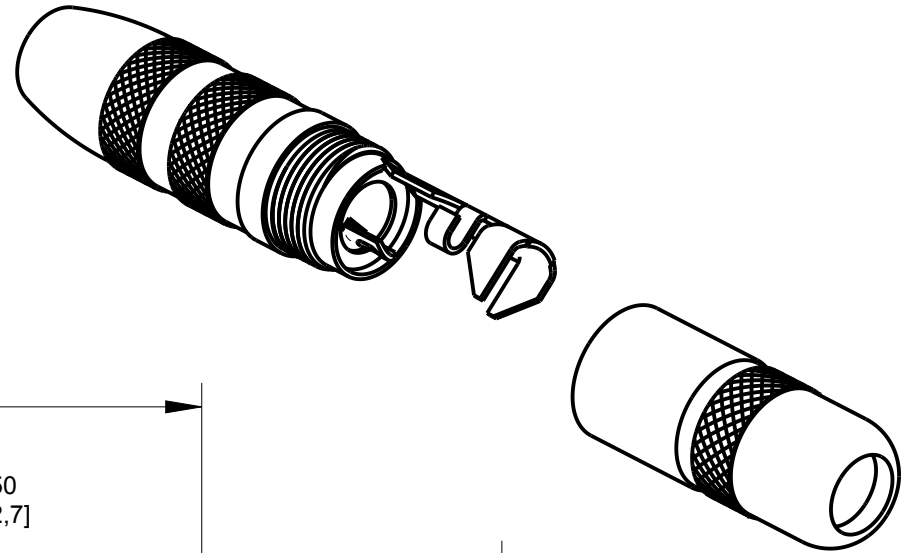


MATERIALS

BODY, SLEEVE AND
 SHIELDED HANDLE - NICKEL PLATED COPPER ALLOY
 SPRINGS - SPECIAL COPPER ALLOY
 INSULATION - THERMOPLASTIC
 CLAMP TERMINAL - TIN PLATED COPPER ALLOY



CUSTOMER DRAWING

					★ STAR SYMBOL DENOTES CRITICAL DIMENSION	THIS DRAWING DESCRIBES A DESIGN CONSIDERED PROPRIETARY IN NATURE, DEVELOPED AND MANUFACTURED BY SWITCHCRAFT INC. AND IS RELEASED ON A CONFIDENTIAL BASIS FOR IDENTIFICATION PURPOSES ONLY.					
					UNLESS OTHERWISE SPECIFIED 1. ALL DIMENSIONS IN INCHES -TWO PLACE DECIMALS ±0.01 -THREE PLACE DECIMALS ±0.005 -ANGLES ±1° -ALL DIA. CONCENTRIC WITHIN 0.005 T.I.R. 2. FEATURES ON THE SAME CENTERLINE MUST BE ALIGNED WITHIN ±0.002 3. REMOVE ALL BURRS	SIZE	WIDTH	MULT	LBS/M	TEMPER	
						FINISH	MATERIAL				
						SPEC No.	SPEC No.				
						FIRST USED ON	SCALE 3:2				
G	28138	02-14-19	PC	TJK		DATE DRAWN	BY	CHKD	APVD	Switchcraft® SHEET 1 OF 1	
F	23647	10-28-02	JL	JF		28-Oct-02	JL	JF 10-28-02	JF 10-28-02		
REV	ECO NUMBER	DATE	BY	APVD		NAME				PART No.	REV
REVISIONS					DO NOT SCALE DRAWING	EXTENSION JAX (2 COND.)				121	G