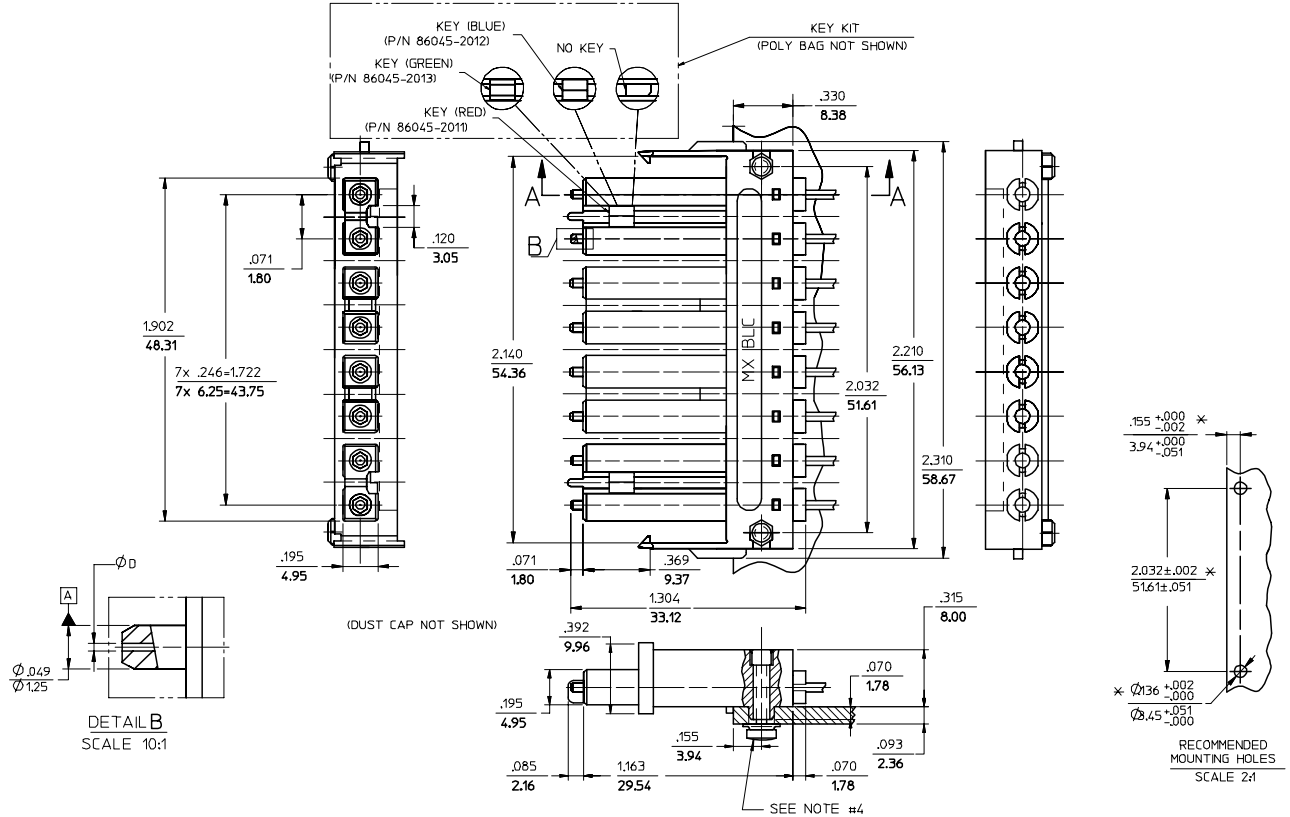


CONNECTOR P/N	ØD (H49)	CABLE TYPE
106046-2200	125.50	SINGLE MODE
106046-3000	127.00	MULTIMODE
106046-4200	125.00	SINGLE MODE
106046-5000	126.00	
106046-6200	125.25	



NOTES:

- ALL DIMENSIONS ARE FOR REFERENCE ONLY, EXCEPT WHEN MARKED WITH (\*).
- KEYS ARE TO BE PACKAGED UNASSEMBLED WITH CONNECTOR IN POLY BAG.
- RECOMMENDED TORQUE TO ASSEMBLE THIS SCREW-21bf-in./- 10%

ENTER DESCRIPTION EC NO: MF2007-0349 DRAWN/REV: ZNER 2006/11/28 CHKD: 2006/11/28 APPR: I GUMIN 2006/12/04 A1	QUALITY SYMBOLS ▽=0 ▽=0	GENERAL TOLERANCES (UNLESS SPECIFIED)		DIMENSION STYLE		SCALE	DESIGN UNITS	THIRD ANGLE PROJECTION		
				IN/MM		4:1	INCH			
		4 PLACES	±	±	DRAWN BY	DATE	TITLE			
		3 PLACES	±	±	PGIBLIN	2005/10/20	BLC CONN.125.5,HGH.PREC, (8 POSITION)			
2 PLACES	±	±	CHECKED BY		DATE	MOLEX INCORPORATED DOCUMENT NO. SD-106046-XXX0 SHEET NO. 1 OF 01				
1 PLACE	±	±	APPROVED BY		DATE					
ANGULAR ±1/2°		MATERIAL NO.		SEE TABLE						
DRAFT WHERE APPLICABLE MUST REMAIN WITHIN DIMENSIONS		SIZE		C		THIS DRAWING CONTAINS INFORMATION THAT IS PROPRIETARY TO MOLEX INCORPORATED AND SHOULD NOT BE USED WITHOUT WRITTEN PERMISSION				