

THIS DRAWING IS UNPUBLISHED. RELEASED FOR PUBLICATION N/A , N/A .  
 © COPYRIGHT N/A BY TYCO ELECTRONICS CORPORATION. ALL RIGHTS RESERVED.

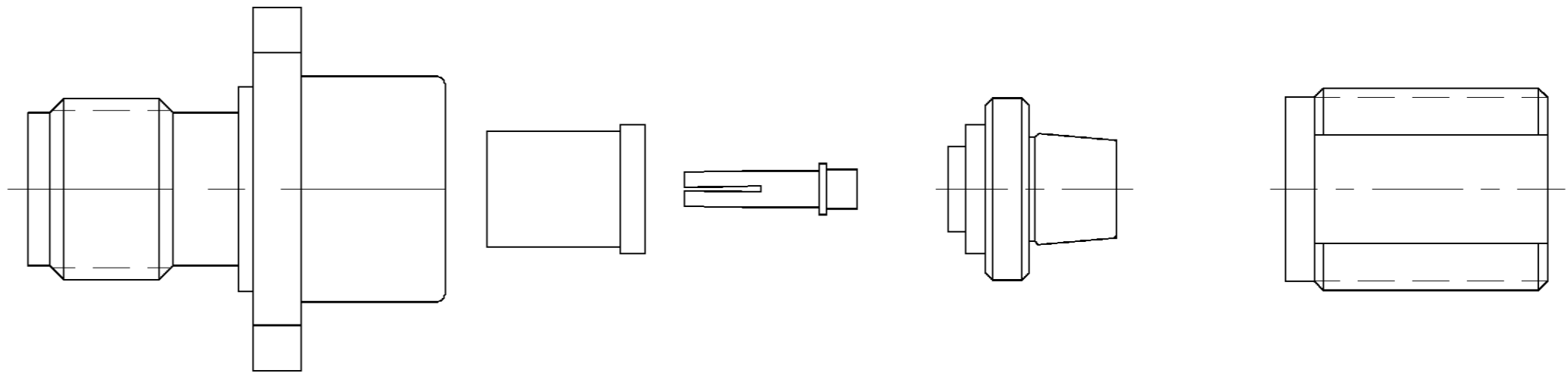
LOC		DIST		REVISIONS			
P	LTR	DESCRIPTION		DATE	DWN	APVD	
	0	PROPOSAL DRAWING		4-02	CT	RG	

COMPONENT	MATERIAL	FINISH
HOUSING CLAMP NUT	STAINLESS STEEL PER ASTM-A-484 OR ASTM-A-582 TYPE 303	PASSIVATED PER QQ-P-35
DIELECTRIC	PTFE FLUORCARBON PER ASTM-D-1457	-
CENTER CONTACT	BERYLLIUM COPPER PER ASTM-B-196 OR ASTM-B-197 ALLOY C17300, CONDITION H	GOLD PLATED PER ASTM-B-488
COLLAR	BRASS PER ASTM-B-16 1/2 HARD	GOLD PLATED PER ASTM-B-488

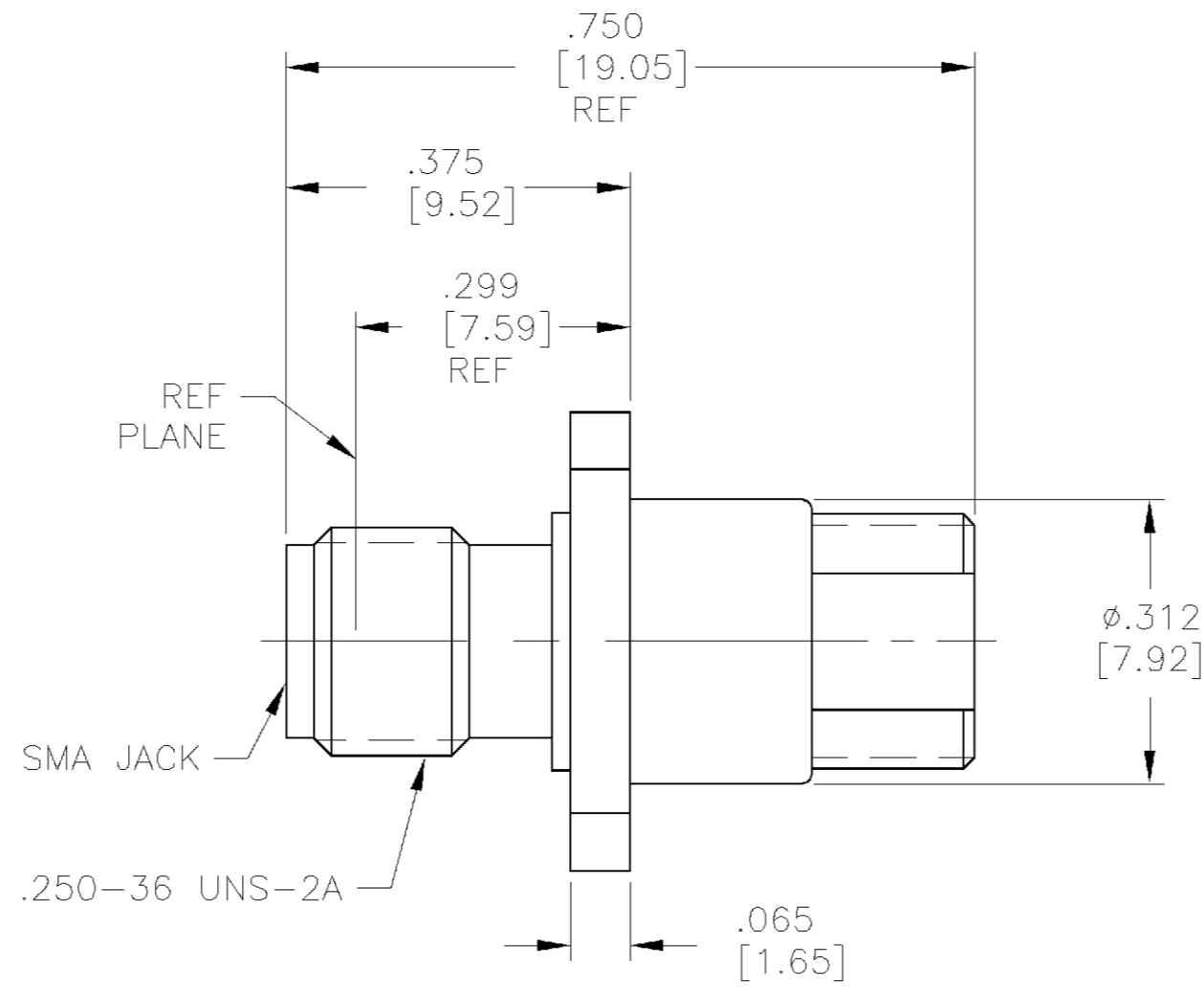
ENVIRONMENTAL	
TEMPERATURE RATING:	-65°C TO +165°C
VIBRATION:	MIL-STD-202, METHOD 204, CONDITION D
SHOCK:	MIL-STD-202, METHOD 213, CONDITION 1
MOISTURE RESISTANCE:	MIL-STD-202, METHOD 106
CORROSION:	MIL-STD-202, METHOD 101, CONDITION B. 5% SALT SPRAY
THERMAL SHOCK:	MIL-STD-202, METHOD 107, CONDITION B

MECHANICAL	
INTERFACE DIMENSIONS:	MIL-STD-348A FIG. 310.2
RECOMMENDED MATING TORQUE:	7 - 10 IN-LBS
FORCE TO ENGAGE & DISENGAGE (IN-LBS MAX):	2.0
WEIGHT (GRAMS):	TBD
MATING CHARACTERISTICS:	INSERTION (MAX LBS): 3.0 WITHDRAWAL (MIN OZ): 1.0
CABLE RETENTION:	AXIAL FORCE (LBS): 20.0 TORQUE (IN-OZ): N/A
CENTER CONTACT CAPTIVATION:	AXIAL (LBS): 6.0 RADIAL (IN-OZ): N/A

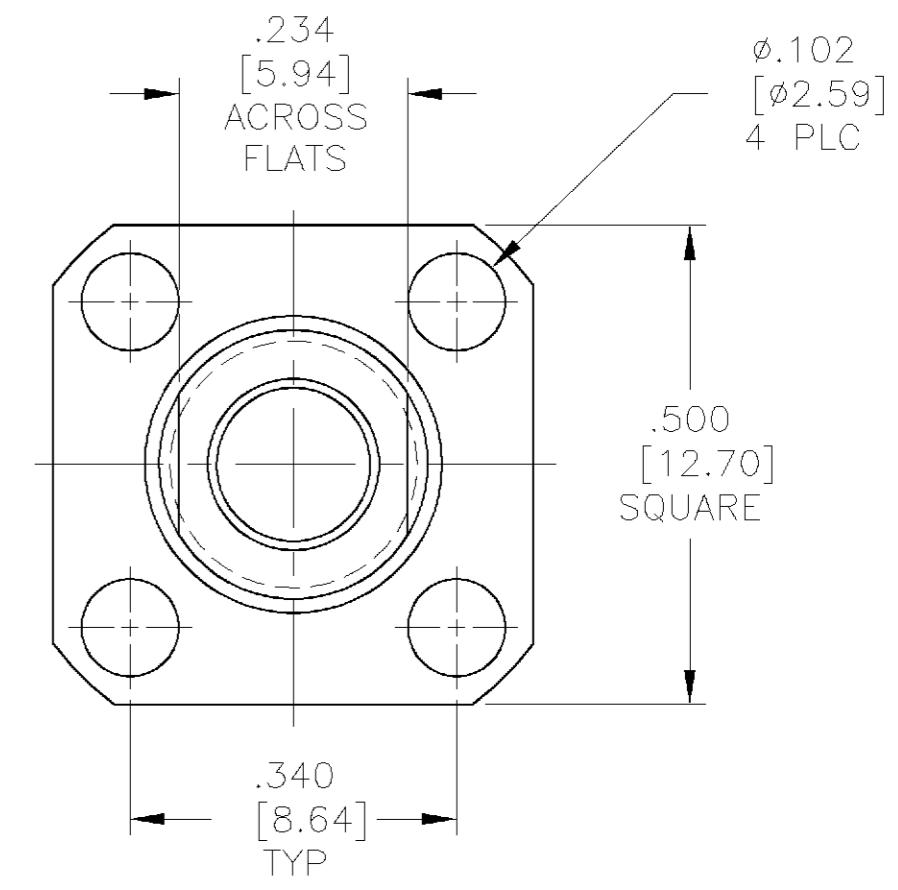
ELECTRICAL	
NORMAL IMPEDANCE (OHMS):	50
FREQUENCY RANGE (GHz):	DC TO MAX OPERATING FREQUENCY OF CABLE PER MIL-C-17
VOLT RATING @ SEA LEVEL (VRMS MAX):	250
VSWR:	1.15+.02f(GHz)
INSERTION LOSS: (dB MAX):	.06 $\sqrt{f(\text{GHz})}$
RF LEAKAGE (dB MIN):	-[60-f(GHz)]
CORONA 70,000 FT (VRMS MIN):	190
DIELECTRIC WITHSTANDING VOLTAGE (VRMS MIN) AT SEA LEVEL:	750
I.R. (MEGOHMS MIN):	10,000
RF HIGH POTENTIAL AT SEA LEVEL (VRMS MIN @ 5 MHz):	500
CONTACT RESISTANCE (MILLIOHMS MAX):	CENTER CONTACT: 3.0 OUTER CONTACT: 2.0 CABLE TO HOUSING: 0.5



AS RECIEVED



ASSEMBLED VIEW



DESIGNED TO USE RG-188U CABLE OR EQUIV.
CABLE ENTRY DIAMETER MIN
DIELECTRIC: .066 [1.68]
CONTACT: .023 [0.58]
CLAMP NUT: .112 [2.84]
COLLAR: .065 [1.65]
-

THIS DRAWING IS A CONTROLLED DOCUMENT.	
DIMENSIONS: INCHES [mm]	TOLERANCES UNLESS OTHERWISE SPECIFIED:
	0 PLC ± -
	1 PLC ± -
	2 PLC ± -
	3 PLC ± .005 [0.13]
	4 PLC ± -
MATERIAL SEE TABLE	FINISH SEE TABLE

DWN C.C.THOMAS 4-19-02	 Tyco Electronics Corporation Harrisburg, Pa 17105-3608	1484092-1 PART NO.
CHK R.GROSS 4-19-02		SMA STRAIGHT CABLE JACK 4 HOLE FLANGE MOUNT CLAMP ATTACHMENT,RF
APVD R.GROSS 4-19-02		
PRODUCT SPEC		NAME
APPLICATION SPEC	SIZE	CAGE CODE
20-075	A2	00779
WEIGHT TBD	DRAWING NO	1484092
CUSTOMER DRAWING	SCALE	10:1
	SHEET	1 OF 1
	REV	0