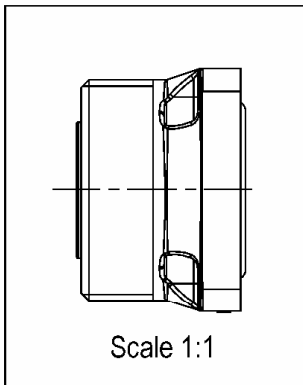
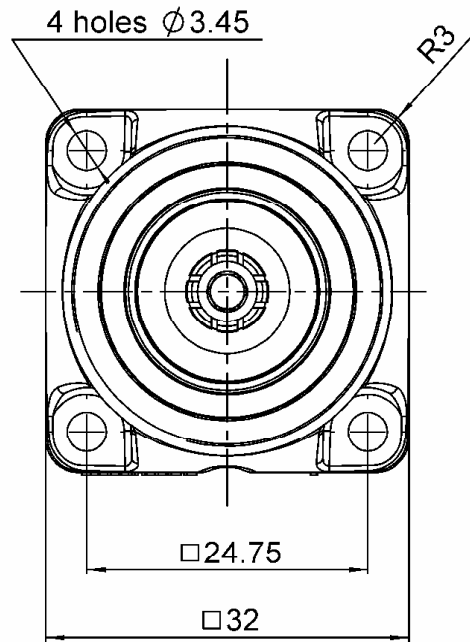
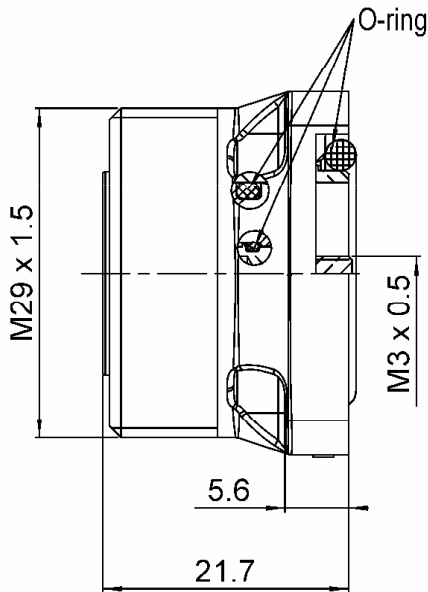


**COMPOSITE SQUARE FLANGE JACK RECEPTACLE-  
PANEL SEAL**

**R187.406.100**

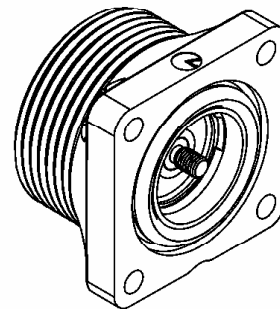
Series : 7/16  
**COMPOSITE**

**WATERPROOF INTERFACE-FRONT MOUNT M3 SCREW**

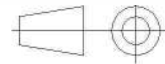


**PANEL CUT OUT**

mm		
	Maxi	mini
A	16.2	16
B	3.7	3.6
C	24.8	24.7



All dimensions are in mm.



COMPONENTS	MATERIALS	PLATING (µm)
<b>BODY</b>	<b>COMPOSITE MATERIAL - BLACK</b>	-
<b>CENTER CONTACT</b>	<b>BRONZE</b>	<b>SILVER 5 OVER COPPER 0.5</b>
<b>OUTER CONTACT</b>	<b>BRASS</b>	<b>BBR 0.5 OVER SILVER 3</b>
<b>INSULATOR</b>	<b>PTFE</b>	-
<b>GASKET</b>	<b>SILICONE RUBBER</b>	-
<b>OTHERS PARTS</b>	-	-
-	-	-
-	-	-

Issue : 0935 C

In the effort to improve our products, we reserve the right to make changes judged to be necessary.



**COMPOSITE SQUARE FLANGE JACK RECEPTACLE-  
PANEL SEAL**

**R187.406.100**

**WATERPROOF INTERFACE-FRONT MOUNT M3 SCREW**

Series : 7/16  
**COMPOSITE**

**PACKAGING**

**SPECIFICATION**

Standard	Unit	Other
<b>60</b>	<b>'W' option</b>	<b>Contact us</b>

**ELECTRICAL CHARACTERISTICS**

**ENVIRONMENTAL**

Impedance	<b>50</b>	$\Omega$
Frequency	<b>0-7.5</b>	GHz
VSWR	<b>*1.06 + 0.0000</b>	x F(GHz) Maxi
Insertion loss	<b>0.05</b>	$\sqrt{F(GHz)}$ dB Maxi
RF leakage	- ( <b>NA</b> )	- F(GHz) dB Maxi
Voltage rating	<b>1400</b>	Veff Maxi
Dielectric withstanding voltage	<b>2700</b>	Veff mini
Insulation resistance	<b>10000</b>	M $\Omega$ mini

Operating temperature	<b>-40/+85</b>	$^{\circ}$ C
Hermetic seal		Atm.cm3/s
Panel leakage	<b>IP67</b>	

**OTHER CHARACTERISTICS**

Assembly instruction

Others :

\*VSWR : 1.06 between DC to 3GHz

\*VSWR : 1.10 between 3 to 7.5GHz

PIM3: -125dBm under 2 carriers of +43dBm

**MECHANICAL CHARACTERISTICS**

Center contact retention		
Axial force – Mating end	<b>200</b>	N mini
Axial force – Opposite end	<b>100</b>	N mini
Torque	<b>50</b>	N.cm mini
Recommended torque		
Mating		N.cm
Panel nut		N.cm
Mating life	<b>500</b>	Cycles mini
Weight	<b>14.6200</b>	g

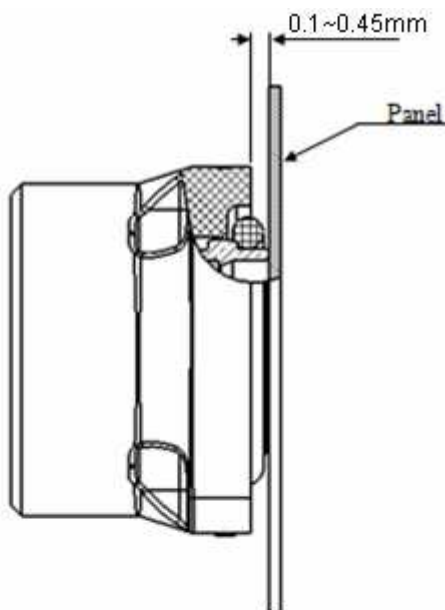
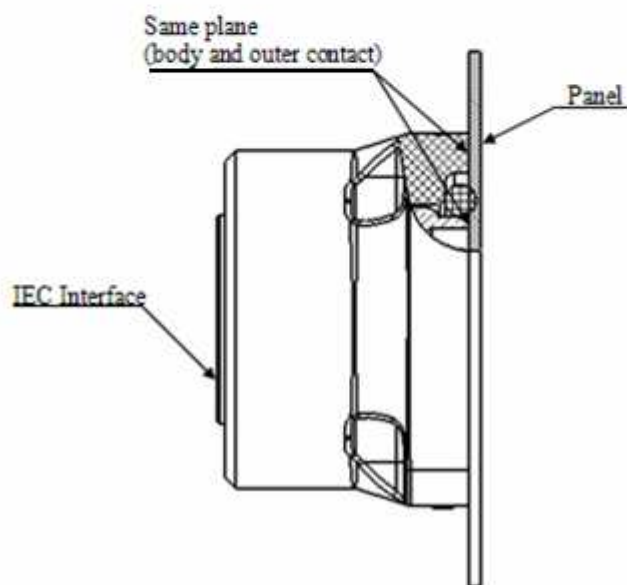
Issue : 0935 C

In the effort to improve our products, we reserve the right to make changes judged to be necessary.



**COMPOSITE SQUARE FLANGE JACK RECEPTACLE-  
PANEL SEAL****R187.406.100****WATERPROOF INTERFACE-FRONT MOUNT M3 SCREW**Series : 7/16  
**COMPOSITE****Assembly instruction**

Prior to the installation, the outer contact is slightly protruded from the rear flange (0.1~0.45mm). During the installation, the outer contact is pushed inside the composite housing. In its final position, the outer contact is aligned with the rear flange, and in contact with the panel. During mating, the outer contact is pressed against the panel, reducing significantly the IM3 generation.

**Before assembly****After assembly****Issue : 0935 C**

In the effort to improve our products, we reserve the right to make changes judged to be necessary.

**RADIALL** 