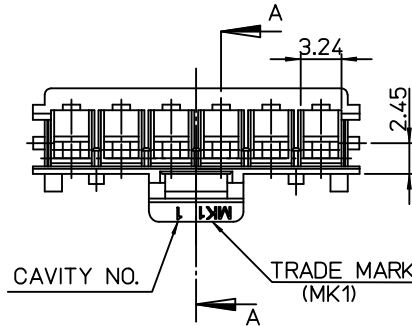
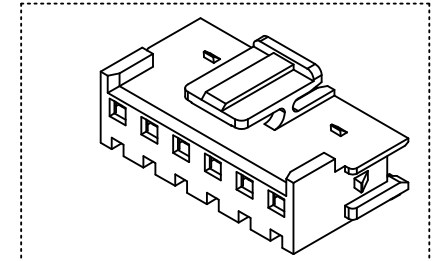


10 9 8 7 6 5 4 3 2 1

NOTES

1. MATERIAL : POLYAMIDE66,UL94V-0
2. FINISH : © WHITE COLOR
3. APPLICABLE TERMINAL : 35922-9002
4. USED WITH T.P.A : 49518 SERIES
5. MATED WITH HEADER ASS'Y : 35978 SERIES

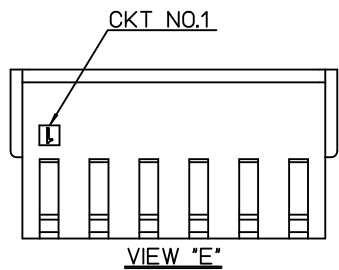
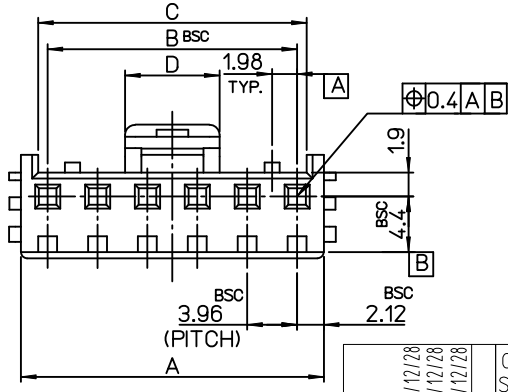
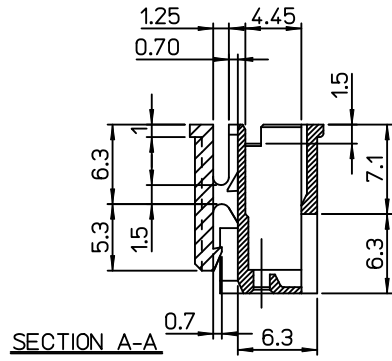
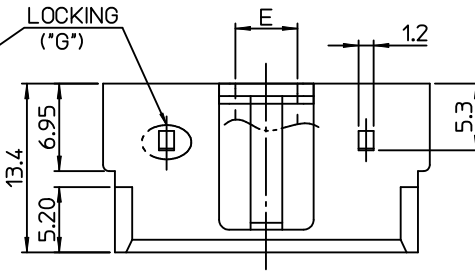
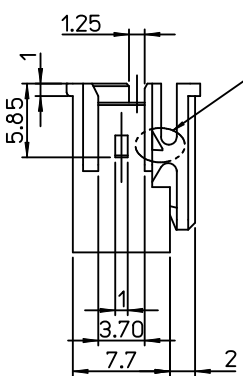


LEGEND

49517 - ** 0 *

COLOR - 0 : NATURAL COLOR
 2 : RED COLOR
 3 : YELLOW COLOR
 4 : BLUE COLOR

CIRCUIT SIZE



| | | | | | | | |
|-------|-------|-------|-------|-------|--------------|------|-----------------|
| 17.34 | 19.9 | 56.88 | 55.44 | 59.68 | - 150* | 15 | LOCKING |
| | | 52.92 | 51.48 | 55.72 | - 140* | 14 | |
| | | 48.96 | 47.52 | 51.76 | - 130* | 13 | |
| | | 45.00 | 43.56 | 47.80 | - 120* | 12 | |
| | | 41.04 | 39.60 | 43.84 | - 110* | 11 | |
| | | 37.08 | 35.64 | 39.88 | - 100* | 10 | |
| 15.14 | 17.7 | 33.12 | 31.68 | 35.92 | - 090* | 9 | WITHOUT LOCKING |
| 13.14 | 15.7 | 29.16 | 27.72 | 31.96 | - 080* | 8 | |
| 8.31 | 10.87 | 25.20 | 23.76 | 28.0 | - 070* | 7 | |
| 4.94 | 7.5 | 21.24 | 19.80 | 24.04 | - 060* | 6 | |
| | | 17.28 | 15.84 | 19.82 | - 050* | 5 | |
| | | 13.32 | 11.88 | 15.86 | - 040* | 4 | |
| | | 9.36 | 7.92 | 11.90 | - 030* | 3 | |
| 0.94 | 3.5 | 5.4 | 3.96 | 7.94 | 49517- 020* | 2 | |
| E | D | C | B | A | MATERIAL NO. | CKT' | TYPE'G' |

| | | | | | | |
|---|-----------------|---|---|-------------------|-------------------------------------|------------------------|
| REVISED EC NO: KOR2011-0061 DRWN: JHPARK01 2010/12/28 CHKD: SHCHU 2010/12/28 APPR: YUNSIKKIM 2010/12/28 | QUALITY SYMBOLS | GENERAL TOLERANCES (UNLESS SPECIFIED) | DIMENSION STYLE | SCALE | DESIGN UNITS | THIRD ANGLE PROJECTION |
| | ▼=0 ◻=0 | mm INCH 4 PLACES ± --- ± --- 3 PLACES ± --- ± --- 2 PLACES ± 0.25 ± --- 1 PLACE ± 0.25 ± --- ANGULAR ± 1 ° | MM ONLY | 1:1 | METRIC | |
| | DESCRIPTION | DRAWN BY | DATE | TITLE | 3.96 W-T-B CONN. HOUSING (TPA TYPE) | |
| | | JB. JIN | 2005/02/18 | | MOLEX INCORPORATED | |
| | CHECKED BY | DATE | | SD-49517-001 | | |
| | MY. YANG | 2005/02/18 | | SHEET NO. 1 OF 01 | | |
| | APPROVED BY | DATE | | | | |
| | CW. LEE | 2005/02/18 | | | | |
| | MATERIAL NO. | | SEE TABLE | | | |
| | | | THIS DRAWING CONTAINS INFORMATION THAT IS PROPRIETARY TO MOLEX INCORPORATED AND SHOULD NOT BE USED WITHOUT WRITTEN PERMISSION | | | |

9 8 7 6 5 4 3 2 1