

## Quality Control Standard

### 出货品质标准

Valued customer 客户名称 :	Customer Product Name/No. (客户产品名称/编号):	扫地机	
Model No 机种编号 :	RC500-KW-14440	Swatch No.: 样品编号	EHA231-0014
Our Code No. 仕样编号 :	RC 500-KW -00061V 陈礼云2023/1/12	(Please Use Our Code No. To Order) (订货时请用此仕样编号)	Rev. Date 修订日:
		备注	DV ROHS

### 1. Conditions of Standard Operation / 工作条件

1- 1 )Driving Voltage 驱动电压	: <span style="color: red;">10</span> V	DC Constant between motor terminals. 马达端子电压 <span style="color: red;">10</span> V 直流恒压。
1- 2 )Direction of Rotation 回转方向	: <span style="color: red;">CCW</span>	viewing from metal housing. <span style="color: red;">CCW</span> 面对马达金属外壳时。
1- 3 )Position of Motor 马达放置状态	: To be placed horizontally when measuring. 测试时水平放置。	

1- 4 )Operating Temperature 工作温度	: <span style="color: red;">-10</span> °C to <span style="color: red;">60</span> °C	噪音测试示意图 
1- 5 )Operating Humidity 工作湿度	: 30%RH to 95%RH	

### 2. Conditions of Standard Test / 测试条件

2- 1 )Testing Temperature 测试温度	: 10°C to 30°C
2- 2 )Testing Humidity 测试湿度	: 30%RH to 95%RH

### 3. Initial Electrical Characteristics / 初期特性

3- 1 ) No Load Speed 无负荷转速	: <span style="color: red;">5800</span> ± <span style="color: red;">850</span> rpm	: <span style="color: red;">5800</span> ± <span style="color: red;">850</span> 转/分
3- 2 ) No Load Current 无负荷电流	: <span style="color: red;">65</span> mA max.	: 最大 <span style="color: red;">65</span> 毫安培
3- 3 ) Stall Torque 堵转扭力	At Load 1.0 & 4.7 mNm	: <span style="color: red;">95</span> g.cm min. : 最小 <span style="color: red;">95</span> g.cm
3- 4 ) Stall Current 堵转电流	在负载点 1.0 & 4.7 mNm	: <span style="color: red;">1070</span> mA max. : 最大 <span style="color: red;">1070</span> 毫安培
3- 5 ) Mechanical Noise (vertical from housing side) 10 cm Background noise 30dB Max) 机械噪音 (距离铁壳侧 10 cm, 环境噪音 30dB Max)	: <span style="color: red;">63</span>	dB Or below (RMS) JIS-A Characteristics dB 以下 (RMS) JIS-A特性
3- 6 ) Reference Performance Curve 参考性能曲线	: As per attached Sheet	<span style="color: red;">RC500-KW-14440</span> : 所附图表为 <span style="color: red;">RC500-KW-14440</span>
3- 7 ) Dimensions 外形尺寸	: As per Drawing attached	<span style="color: red;">WG- R500K-T06</span> : 所附图面为 <span style="color: red;">WG- R500K-T06</span>
3- 8 ) End play of Shaft 虚位	: <span style="color: red;">0.05</span> ~ <span style="color: red;">0.40</span> mm	: <span style="color: red;">0.05</span> ~ <span style="color: red;">0.40</span> 毫米

For &amp; on behalf of Customer

For &amp; on behalf of Standard Motor Co., Ltd.

Jack Lee 2023/01/09



As a reminder, the specification should be signed and returned within two weeks, or it will be considered as acceptable by the customer. 如果客户两周内不签字确认并返回, 将被视为已认可此规格。

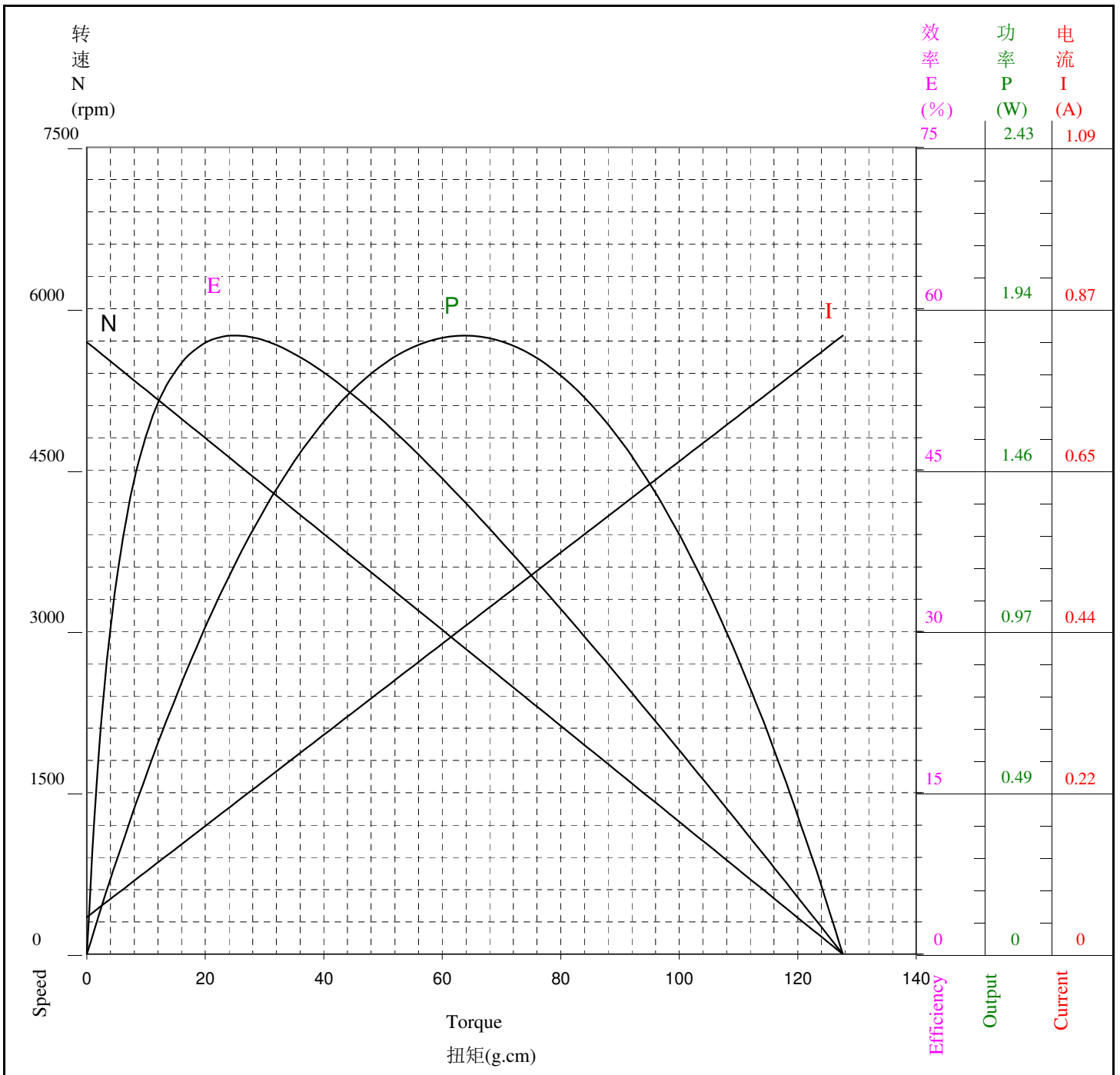
性能表只供参考  
马达实际参数请以马达出货标准为主



**STANDARD MOTOR 標準微型摩打有限公司**

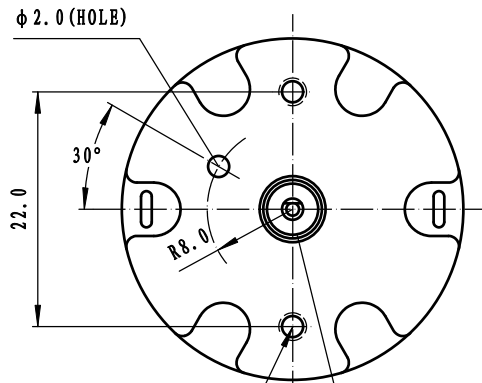
两点法: 10.2 g.cm & 47.9 g.cm

Model/Winding 型号/卷线	Voltage 电压 V	No Load 无负荷		At Maximum Efficiency 最大效率点				At Maximum Output 最大功率点				Stall 停止	
		Current 电流 A	Speed 转速 rpm	Current 电流 A	Speed 转速 rpm	Torque 扭矩 g.cm	Efficiency 效率 %	Current 电流 A	Speed 转速 rpm	Torque 扭矩 g.cm	Output 功率 W	Current 电流 A	Torque 扭矩 g.cm
RC500-KW-14440	10.0	0.050	5689	0.204	4571	25.1	57.5	0.443	2845	63.8	1.86	0.836	127.6



MARK	POSITION	DESCRIPTION	DATE	BY
△X1	C4	图误修正: 6.2±0.01→6.2±0.05	13.01.10	李开力
△X1	D1	根据客户要求, 增加螺纹公差等级: 6H	20.04.07	马凯

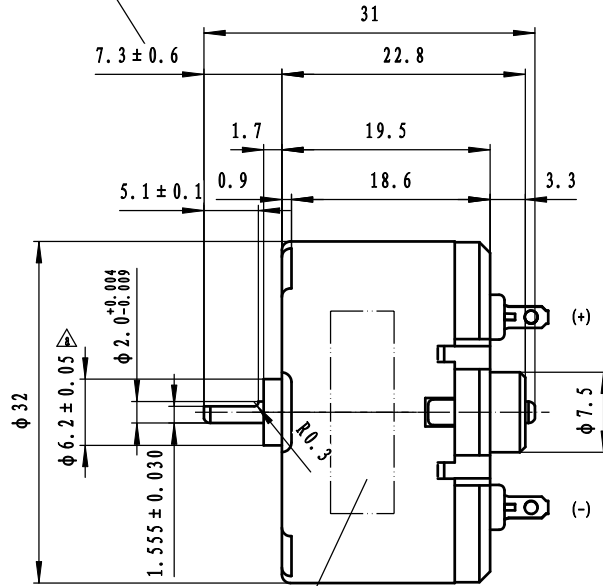
马达回转方向  
DIRECTION OF ROTATION



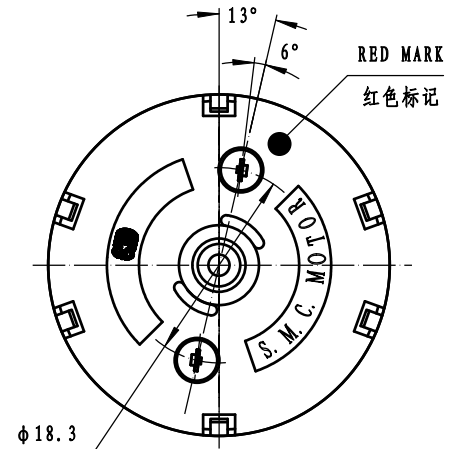
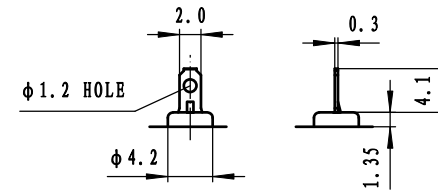
2-M2.6X0.45  
△ 螺纹公差等级: 6H  
2 TAPPED HOLES  
参见备注4

DUST PROOF WASHER  $\phi 4.8 \times 0.25$   
防尘介子  $\phi 4.8 \times 0.25$

SEE NOTE 1  
参见备注 1



SEE NOTE 3  
参见备注 3



NOTES(备注):

- THIS DIM APPLIES ONLY WHEN MOTOR SHAFT IS IN EXTREME RIGHT POSITION  
该尺寸适用于将轴压于右侧时
- SHAFT END PLAY 0.05~0.40  
马达虚位(轴向串动) 0.05~0.40
- SPECIFIED CONTENT WILL BE TYPEGRAPHICALED IN CONFORMITY TO GETUP BOOK OF MOTOR  
按马达仕様书印刷指定内容
- APPLIED SCREW LENGTH AT 1.9 MAX. MEASURED FROM THE HOUSING MOUNT SURFACE  
从大壳安装面计算, 允许螺钉旋入深度1.9 MAX.

Characteristic		DWN. BY	梁凤亮	DWN. DATE	12.09.19	TITLE	马达外观图		
□	Cpk > 1.33	CHK. BY		CHK. DATE		DWG. No.	WG-R500K-T06		
▲	Quality control	APP. BY		APP. DATE		Undeclared tolerance	± 0.3	Angle tolerance	± 3°
Not mark	Not required	STANDARD MOTOR 标准微型马达有限公司		SCALE	2:1	Rev.	b	A3	