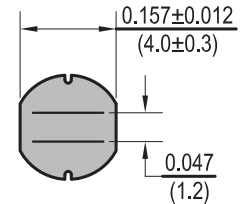
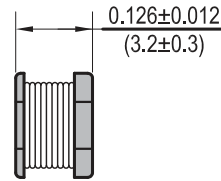
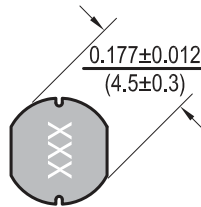




# Power Chip Inductors PC0403



Dimensions:  $\frac{\text{Inches}}{\text{(mm)}}$



Allied Part Number	Inductance (μH)	Tolerance (%)	Test Frequency	DCR (Ω) Max	IDC (A)
PC0403-1R0M-RC	1.0	20	7.96MHz, 1V	0.033	3.80
PC0403-1R2M-RC	1.2	20	7.96MHz, 1V	0.035	3.50
PC0403-1R4M-RC	1.4	20	7.96MHz, 1V	0.038	3.30
PC0403-1R8M-RC	1.8	20	7.96MHz, 1V	0.042	2.91
PC0403-2R2M-RC	2.2	20	7.96MHz, 1V	0.047	2.60
PC0403-2R7M-RC	2.7	20	7.96MHz, 1V	0.052	2.43
PC0403-3R3M-RC	3.3	20	7.96MHz, 1V	0.058	2.15
PC0403-3R9M-RC	3.9	20	7.96MHz, 1V	0.076	1.98
PC0403-4R7M-RC	4.7	20	7.96MHz, 1V	0.094	1.70
PC0403-5R6M-RC	5.6	20	7.96MHz, 1V	0.101	1.60
PC0403-6R2M-RC	6.2	20	7.96MHz, 1V	0.110	1.50
PC0403-6R8M-RC	6.8	20	7.96MHz, 1V	0.117	1.41
PC0403-8R2M-RC	8.2	20	7.96MHz, 1V	0.132	1.26
PC0403-100M-RC	10	20	2.52MHz, 1V	0.182	1.15
PC0403-120M-RC	12	20	2.52MHz, 1V	0.210	1.05
PC0403-150M-RC	15	20	2.52MHz, 1V	0.235	0.92
PC0403-180M-RC	18	20	2.52MHz, 1V	0.338	0.84
PC0403-220M-RC	22	20	2.52MHz, 1V	0.378	0.76
PC0403-270M-RC	27	20	2.52MHz, 1V	0.522	0.71
PC0403-330K-RC	33	10	2.52MHz, 1V	0.540	0.64
PC0403-390K-RC	39	10	2.52MHz, 1V	0.587	0.59
PC0403-470K-RC	47	10	2.52MHz, 1V	0.844	0.54
PC0403-560K-RC	56	10	2.52MHz, 1V	0.937	0.50
PC0403-680K-RC	68	10	2.52MHz, 1V	1.117	0.46
PC0403-820M-RC	82	20	2.52MHz, 1V	1.345	0.45
PC0403-101K-RC	100	10	1KHz, 1V	2.000	0.44
PC0403-121K-RC	120	10	1KHz, 1V	1.800	0.43
PC0403-151K-RC	150	10	1KHz, 1V	2.800	0.42
PC0403-181K-RC	180	10	1KHz, 1V	3.200	0.38
PC0403-221K-RC	220	10	1KHz, 1V	4.000	0.15
PC0403-271K-RC	270	10	1KHz, 1V	3.900	0.34
PC0403-331K-RC	330	10	1KHz, 1V	5.850	0.21
PC0403-391K-RC	390	10	1KHz, 1V	5.900	0.24
PC0403-471K-RC	470	10	1KHz, 1V	6.800	0.21
PC0403-561K-RC	560	10	1KHz, 1V	8.500	0.20
PC0403-681K-RC	680	10	1KHz, 1V	10.00	0.18
PC0403-821K-RC	820	10	1KHz, 1V	13.40	0.15
PC0403-102K-RC	1000	10	1KHz, 1V	15.60	0.14

All specifications subject to change without notice.

## Features

- Unshielded SMD Power Inductor
- Suitable for large currents
- Ideal for DC-DC converter applications
- Flat top for pick and place assembly

## Electrical

**Inductance Range:** 1μH to 1000μH

**Tolerance:** 20% over entire range

Also available in tighter tolerances

**Operating Temp:** -40°C to +105°C

**IDC:** Current at which Inductance drops 10% of its initial value or ΔT= 40°C whichever is lower.

## Resistance to Soldering Heat

**Test Method:** Pre-Heat 150°C, 1 Min.

**Solder Composition:** Sn/Ag3.0/Cu0.5

**Solder Temp:** 260°C ±5°C for 10 sec ±1 sec.

## Test Equipment

**(L):** HP4192A LF Impedance Analyzer

**(RDC):** Chen Hwa 502BC

**(IDC):** HP4284A with HP42841A

## Physical

**Packaging:** 2000 pieces per 13 inch reel.

**Marking:** EIA Inductance Code.