



# HMC630LP3 / 630LP3E

## GaAs HBT VECTOR MODULATOR 700 - 1000 MHz

### Typical Applications

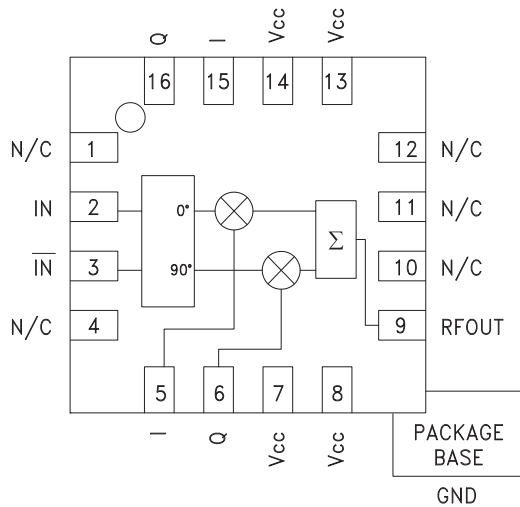
The HMC630LP3(E) is ideal for:

- Wireless Infrastructure HPA & MPCA Error Correction
- Pre-Distortion or Feed-Forward Linearization
- Cellular / 3G Systems
- Beam Forming or RF Cancellation Circuits

### Features

- Continuous Phase Control: 360°
- Continuous Gain Control: 40 dB
- Low Output Noise Floor: -162 dBm/Hz
- High Input IP3: +34 dBm
- 16 Lead 3x3mm SMT Package: 9mm<sup>2</sup>

### Functional Diagram



### General Description

The HMC630LP3 & HMC630LP3E are high dynamic range Vector Modulator RFICs which are targeted for RF predistortion and feed-forward cancellation circuits, as well as RF beam forming and amplitude/phase correction circuits. The I & Q ports of the HMC630LP3(E) can be used to continuously vary the phase and amplitude of RF signals by up to 360 degrees and 40 dB respectively, while supporting a 3 dB modulation bandwidth of 180 MHz. With an output IP3 of +24.5 dBm and output noise floor of -162 dBm/Hz (at maximum gain setting), the output IP3/noise floor ratio is 186.5 dB.

10

MODULATORS - SMT

### Electrical Specifications, $T_A = +25^\circ\text{C}$ , $V_{cc} = +8\text{V}$

| Parameter                                   | Min. | Typ.         | Max. | Units   |
|---|------|--------------|------|---------|
| Frequency Range                             |      | 0.7 - 1.0    |      | GHz     |
| Maximum Gain <sup>(1)</sup>                 | -12  | -10          |      | dB      |
| Gain Variation Over Temperature             |      | 0.02         | 0.03 | dB / °C |
| Gain Flatness Across Any 60 MHz Bandwidth   |      | 0.10         |      | dB      |
| Gain Range                                  |      | 40           |      | dB      |
| Input Return Loss                           |      | 15           |      | dB      |
| Output Return Loss                          |      | 17           |      | dB      |
| Input Power for 1dB Compression (P1dB)      | 14   | 17           |      | dBm     |
| Input Third Order Intercept (IP3)           |      | 34           |      | dBm     |
| Output Noise                                |      | -162         |      | dBm/Hz  |
| Control Port Bandwidth (-3 dB)              |      | 180          |      | MHz     |
| Control Port Impedance                      |      | 1.45k        |      | Ohms    |
| Control Port Capacitance                    |      | 0.22         |      | pF      |
| Control Voltage Range                       |      | +0.5 to +2.5 |      | Vdc     |
| Group Delay Variation Over 60 MHz Bandwidth |      | 20           |      | ps      |
| Supply Current (Icq)                        |      | 92           |      | mA      |

Unless otherwise noted, measurements are made @ max. gain setting and 45° phase setting.

See application circuit for details.

<sup>(1)</sup>Includes loss of input balun (0.75 dB typ.).

Information furnished by Analog Devices is believed to be accurate and reliable. However, no responsibility is assumed by Analog Devices for its use, nor for any infringements of patents or other rights of third parties that may result from its use. Specifications subject to change without notice. No license is granted by implication or otherwise under any patent or patent rights of Analog Devices. Trademarks and registered trademarks are the property of their respective owners. license is granted by implication or otherwise under any patent or patent rights of Analog Devices. Trademarks and registered trademarks are the property of their respective owners.

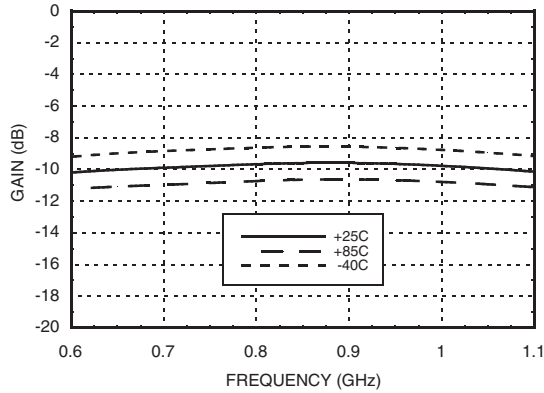
For price, delivery, and to place orders: Analog Devices, Inc., One Technology Way, P.O. Box 9106, Norwood, MA 02062-9106 Phone: 781-329-4700 • Order online at [www.analog.com](http://www.analog.com) Application Support: Phone: 1-800-ANALOG-D



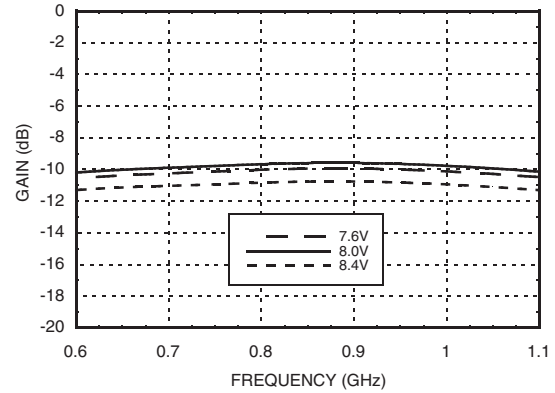
# HMC630LP3 / 630LP3E

## GaAs HBT VECTOR MODULATOR 700 - 1000 MHz

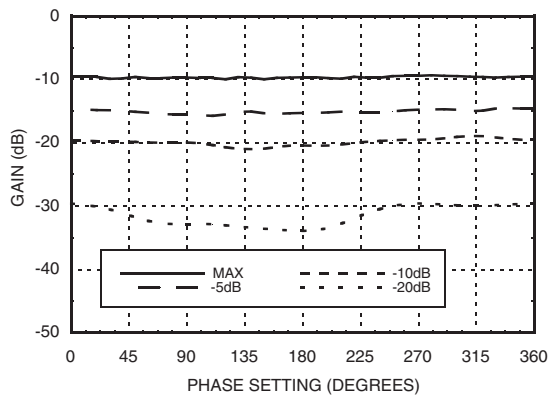
**Maximum Gain vs. Temperature**



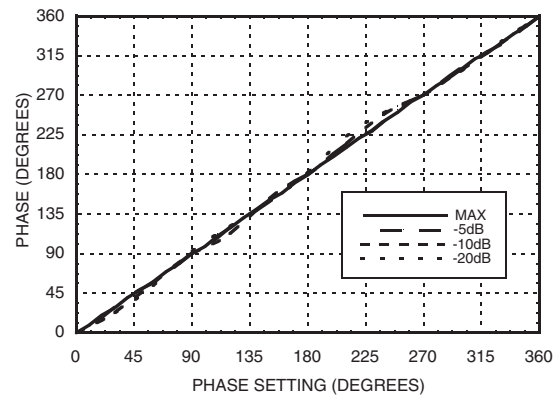
**Maximum Gain vs. Supply Voltage**



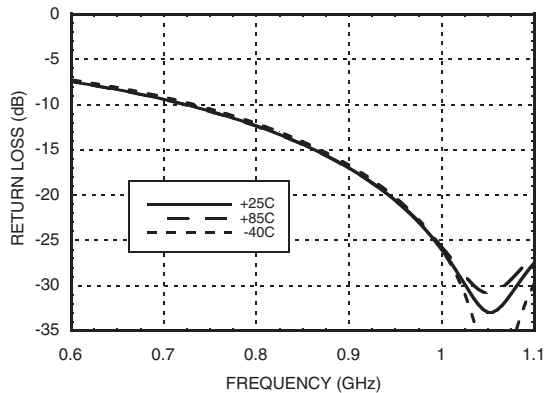
**Gain vs. Phase Settings @ F= 900 MHz**



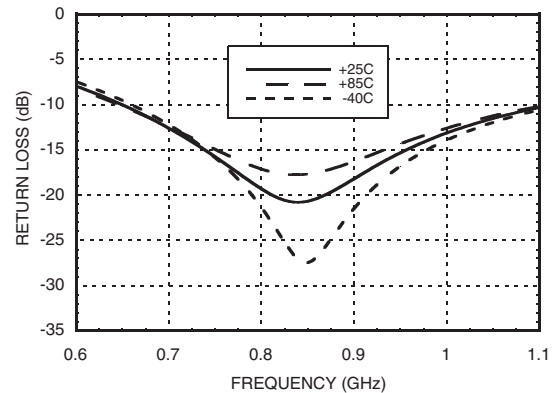
**Phase vs. Phase Settings @ F= 900 MHz vs. Various Gain Settings**



**Input Return Loss vs. Temperature**



**Output Return Loss vs. Temperature**



Information furnished by Analog Devices is believed to be accurate and reliable. However, no responsibility is assumed by Analog Devices for its use, nor for any infringements of patents or other rights of third parties that may result from its use. Specifications subject to change without notice. No license is granted by implication or otherwise under any patent or patent rights of Analog Devices. Trademarks and registered trademarks are the property of their respective owners. license is granted by implication or otherwise under any patent or patent rights of Analog Devices. Trademarks and registered trademarks are the property of their respective owners.

For price, delivery, and to place orders: Analog Devices, Inc., One Technology Way, P.O. Box 9106, Norwood, MA 02062-9106 Phone: 781-329-4700 • Order online at [www.analog.com](http://www.analog.com) Application Support: Phone: 1-800-ANALOG-D



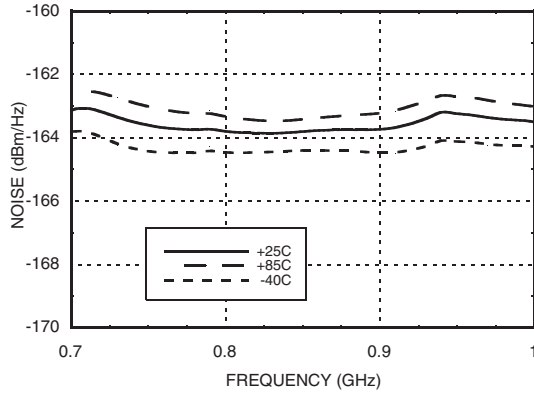
# HMC630LP3 / 630LP3E

## GaAs HBT VECTOR MODULATOR 700 - 1000 MHz

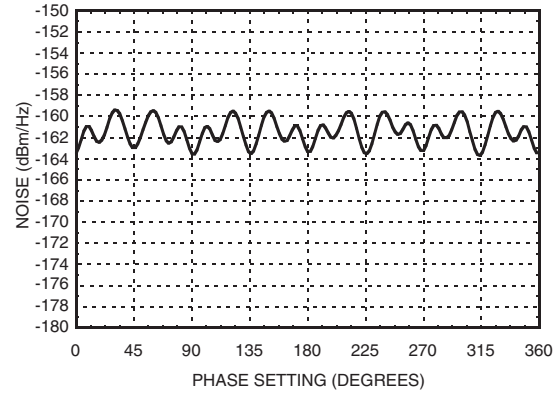
10

MODULATORS - SMT

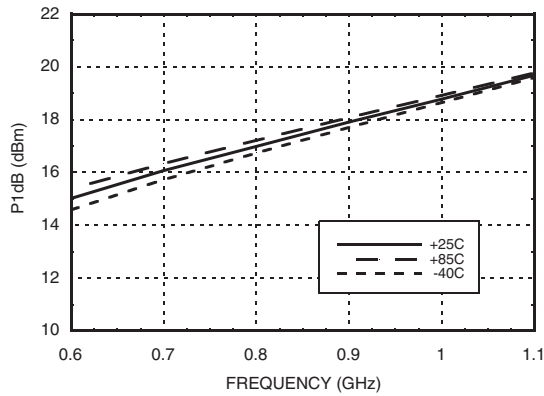
**Output Noise vs. Temperature**



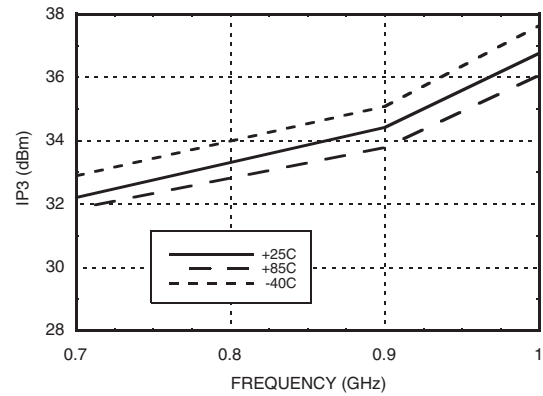
**Output Noise vs. Phase Settings @ F= 900 MHz**



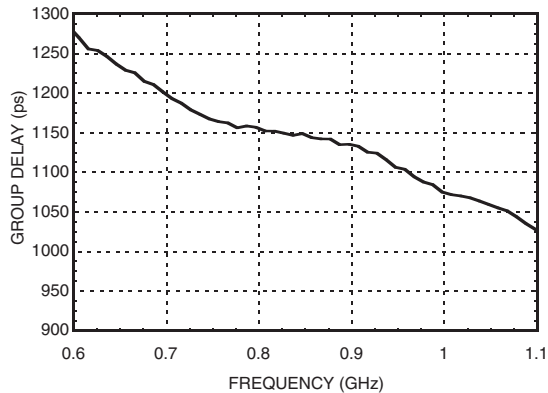
**Input P1dB vs. Temperature**



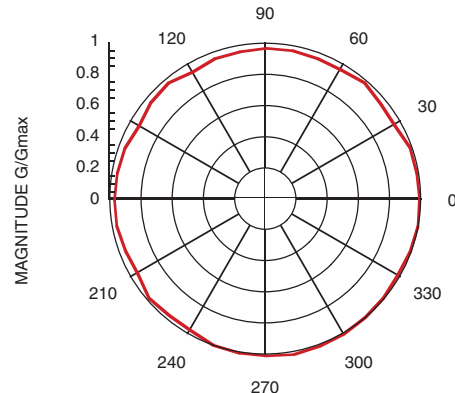
**Input IP3 vs. Temperature**



**Group Delay**



**Linear Gain vs. Phase Setting**



Information furnished by Analog Devices is believed to be accurate and reliable. However, no responsibility is assumed by Analog Devices for its use, nor for any infringements of patents or other rights of third parties that may result from its use. Specifications subject to change without notice. No license is granted by implication or otherwise under any patent or patent rights of Analog Devices. Trademarks and registered trademarks are the property of their respective owners. license is granted by implication or otherwise under any patent or patent rights of Analog Devices. Trademarks and registered trademarks are the property of their respective owners.

For price, delivery, and to place orders: Analog Devices, Inc., One Technology Way, P.O. Box 9106, Norwood, MA 02062-9106 Phone: 781-329-4700 • Order online at [www.analog.com](http://www.analog.com) Application Support: Phone: 1-800-ANALOG-D

### Typical Supply Current vs. Vcc

| Vcc (V) | Icc (mA) |
|---------|----------|
| 7.6     | 86       |
| 8.0     | 92       |
| 8.4     | 98       |

Note:  
Modulator will operate over full voltage range shown above.

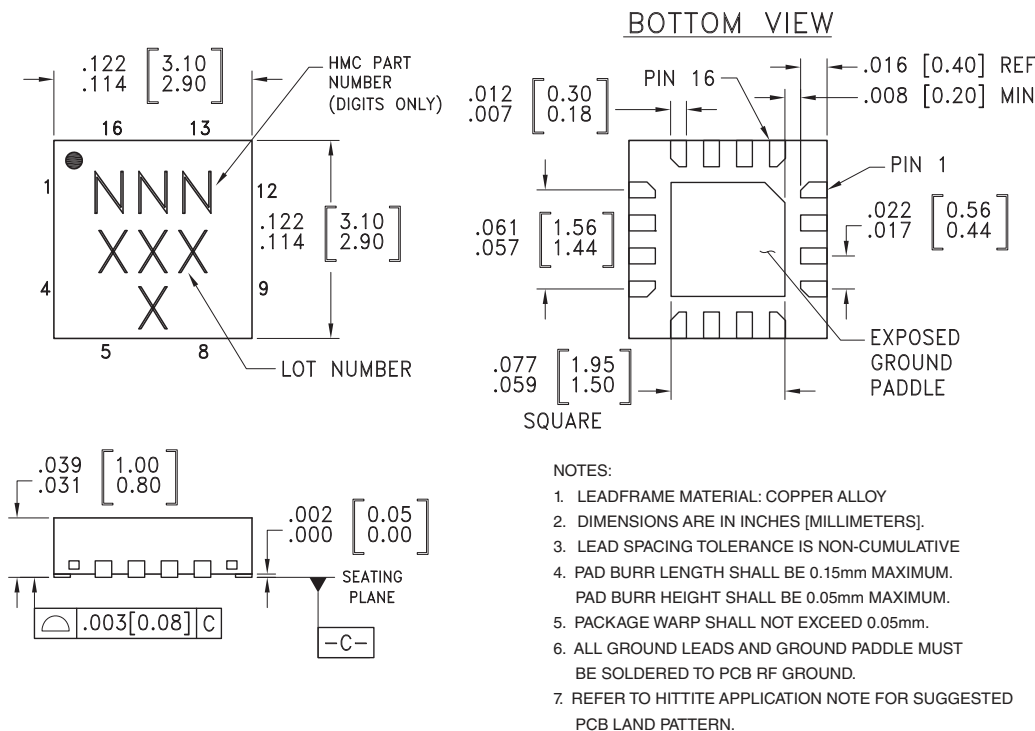


**ELECTROSTATIC SENSITIVE DEVICE  
OBSERVE HANDLING PRECAUTIONS**

### Absolute Maximum Ratings

|   |                |
|---|----------------|
| RF Input (Vcc = +8V)  | 27 dBm         |
| Supply Voltage (Vcc)  | +10V           |
| I & Q Input   | -0.5V to +5.0V |
| Junction Temperature (Tc)   | 135 °C         |
| Continuous P <sub>diss</sub> (T = 85°C)<br>(Derate 34 mW/°C above 85°C) | 1.7 W          |
| Thermal Resistance (R <sub>th</sub> )<br>(junction to ground paddle)    | 29.6 °C/W      |
| Storage Temperature   | -65 to +150 °C |
| Operating Temperature   | -40 to +85 °C  |

### Outline Drawing



### Package Information

| Part Number | Package Body Material                              | Lead Finish   | MSL Rating          | Package Marking <sup>[3]</sup> |
|-------------|--|---------------|---------------------|--------------------------------|
| HMC630LP3   | Low Stress Injection Molded Plastic                | Sn/Pb Solder  | MSL1 <sup>[1]</sup> | 630<br>XXXX                    |
| HMC630LP3E  | RoHS-compliant Low Stress Injection Molded Plastic | 100% matte Sn | MSL1 <sup>[2]</sup> | 630<br>XXXX                    |

[1] Max peak reflow temperature of 235 °C

[2] Max peak reflow temperature of 260 °C

[3] 4-Digit lot number XXXX



**HMC630LP3 / 630LP3E**

**GaAs HBT VECTOR MODULATOR 700 - 1000 MHz**

**Pin Description**

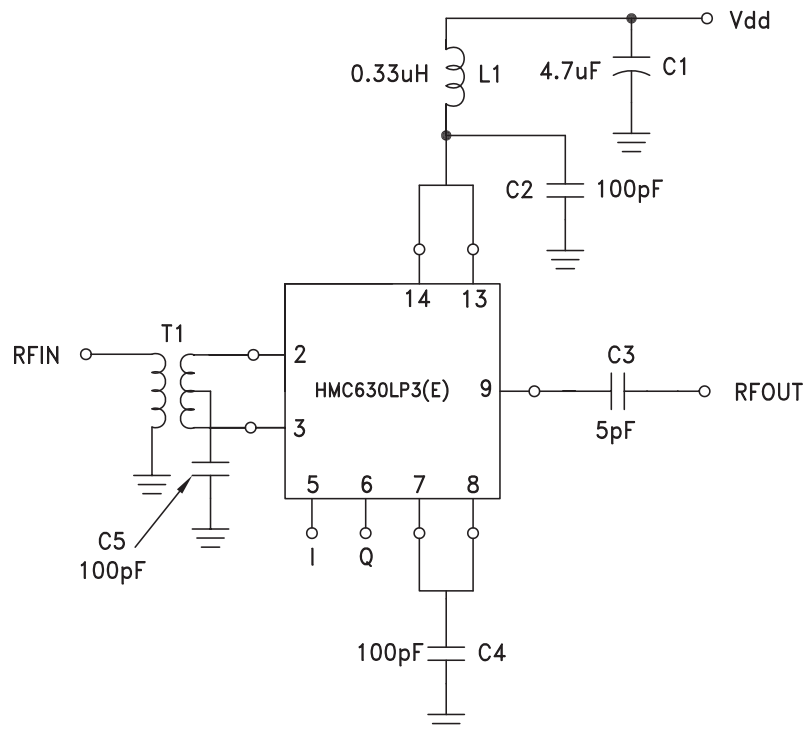
| Pin Number    | Function       | Description   | Interface Schematic |
|---------------|----------------|---|---------------------|
| 1, 4, 10 - 12 | N/C            | No connection. These pins may be connected to RF ground. Performance will not be affected   |                     |
| 2, 3          | IN, $\bar{IN}$ | Differential RF inputs, 100 Ohms differential impedance. (i.e. each pin is 50 Ohms to ground). Must be DC blocked.  |                     |
| 5, 15         | I              | In-phase control input. Pins 5 and 15 are redundant. Either input can be used.  |                     |
| 6, 16         | Q              | Quadrature control input. Pins 6 and 16 are redundant. Either input can be used.  |                     |
| 7, 8, 13, 14  | Vcc            | Supply Voltage, pins are DC connected on-chip. It is only necessary to supply Vcc to any 1 of the 4 pins, but all 4 pins must be bypassed to ground. (See application circuit). |                     |
| 9             | RFOUT          | RF Output: Must be DC blocked.  |                     |
|               | GND            | Ground: Backside of package has exposed metal ground paddle which must be connected to RF/DC ground.  |                     |

10

MODULATORS - SMT



**Application Circuit**



\* Pins 15 & 16 are redundant I & Q inputs.

Gain and Phase control are applied through the I and Q control ports. For a given linear gain (G) and phase ( $\theta$ ) setting, the voltages applied to these ports in all measurements are calculated as follows:

$$I(G, \theta) = V_{mi} + 1.0V \frac{G}{G_{max}} \cos(\theta)$$

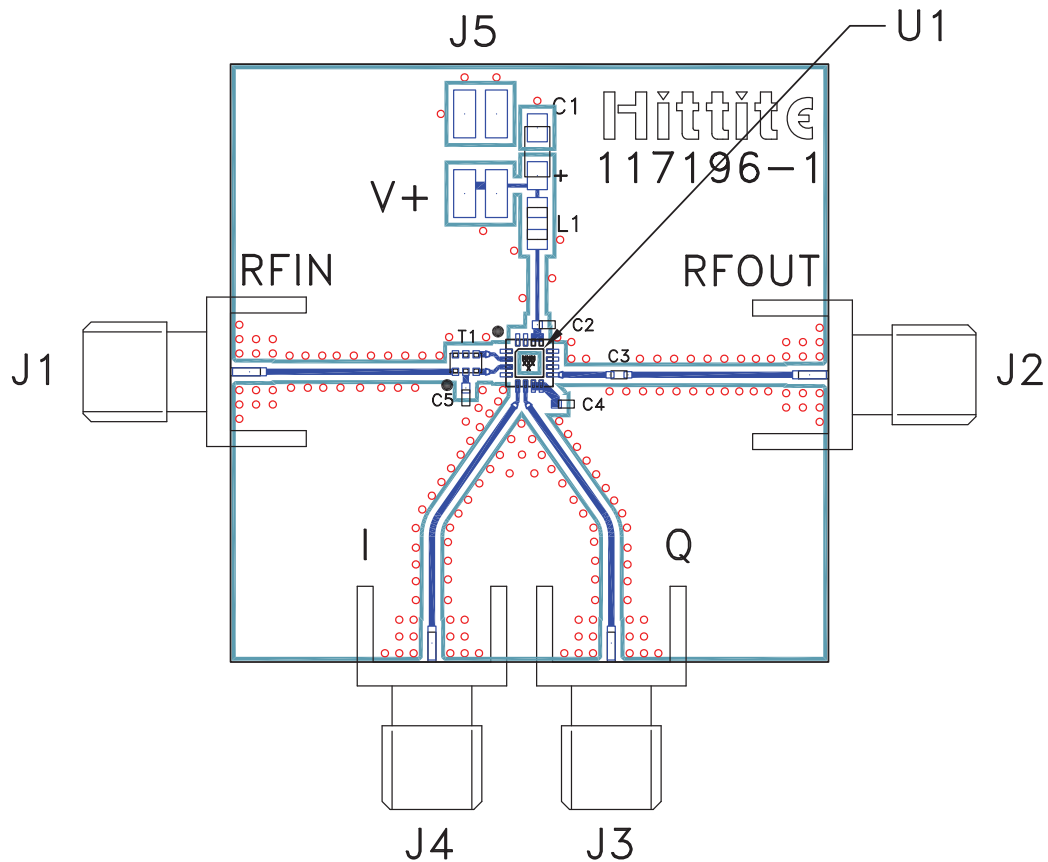
$$Q(G, \theta) = V_{mq} + 1.0V \frac{G}{G_{max}} \sin(\theta)$$

Where  $V_{mi}$  and  $V_{mq}$  are the I and Q voltage settings corresponding to maximum isolation at room temperature and  $F = 0.9$  GHz. Note that  $G = 10^x$  and  $G_{max} = 10^y$  where  $x = \frac{\text{Gain Setting (dB)}}{20}$  and  $y = \frac{\text{Max Gain Setting (dB)}}{20}$ . Nominally  $V_{mi} = V_{mq} = 1.5V$ ,  $G_{max} = 0.316$ .

Information furnished by Analog Devices is believed to be accurate and reliable. However, no responsibility is assumed by Analog Devices for its use, nor for any infringements of patents or other rights of third parties that may result from its use. Specifications subject to change without notice. No license is granted by implication or otherwise under any patent or patent rights of Analog Devices. Trademarks and registered trademarks are the property of their respective owners.

For price, delivery, and to place orders: Analog Devices, Inc., One Technology Way, P.O. Box 9106, Norwood, MA 02062-9106 Phone: 781-329-4700 • Order online at [www.analog.com](http://www.analog.com) Application Support: Phone: 1-800-ANALOG-D

**Evaluation PCB**



**List of Materials for Evaluation PCB 117198 [1]**

| Item       | Description                              |
|------------|--|
| J1 - J4    | PCB Mount SMA Connector                  |
| J5         | 2 mm DC Header                           |
| C1         | 4.7 $\mu$ F Capacitor, Tantalum          |
| C2, C4, C5 | 100 pF Capacitor, 0402 Pkg.              |
| C3 [3]     | 5 pF Capacitor, 0402 pkg                 |
| T1         | Balun, 0805 Pkg.<br>ANAREN BD0810J50100A |
| L1         | 330 nH Inductor, 0805 Pkg.               |
| U1         | HMC630LP3(E) Vector Modulator            |
| PCB [2]    | 117196 Evaluation PCB                    |

[1] Reference this number when ordering complete evaluation PCB

[2] Circuit Board Material: Rogers 4350, Er = 3.48

[3] Locate close to HMC630LP3E package

The circuit board used in the final application should use RF circuit design techniques. Signal lines should have 50 ohm impedance while the package ground leads and exposed paddle should be connected directly to the ground plane similar to that shown. A sufficient number of via holes should be used to connect the top and bottom ground planes. The evaluation board should be mounted to an appropriate heat sink. The evaluation circuit board shown is available from Hittite upon request.



# HMC630LP3 / 630LP3E

## GaAs HBT VECTOR MODULATOR 700 - 1000 MHz

### Notes:

Information furnished by Analog Devices is believed to be accurate and reliable. However, no responsibility is assumed by Analog Devices for its use, nor for any infringements of patents or other rights of third parties that may result from its use. Specifications subject to change without notice. No license is granted by implication or otherwise under any patent or patent rights of Analog Devices. Trademarks and registered trademarks are the property of their respective owners.

For price, delivery, and to place orders: Analog Devices, Inc., One Technology Way, P.O. Box 9106, Norwood, MA 02062-9106 Phone: 781-329-4700 • Order online at [www.analog.com](http://www.analog.com) Application Support: Phone: 1-800-ANALOG-D