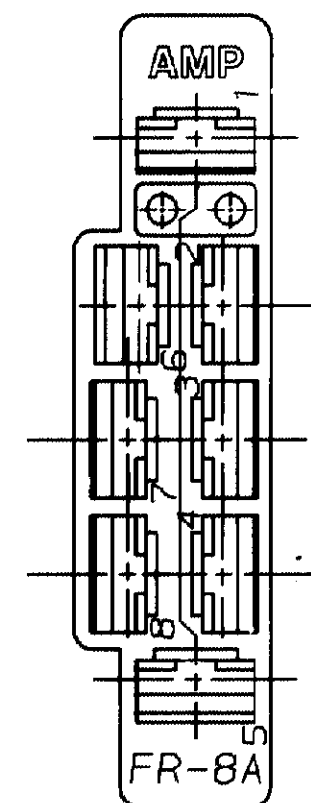
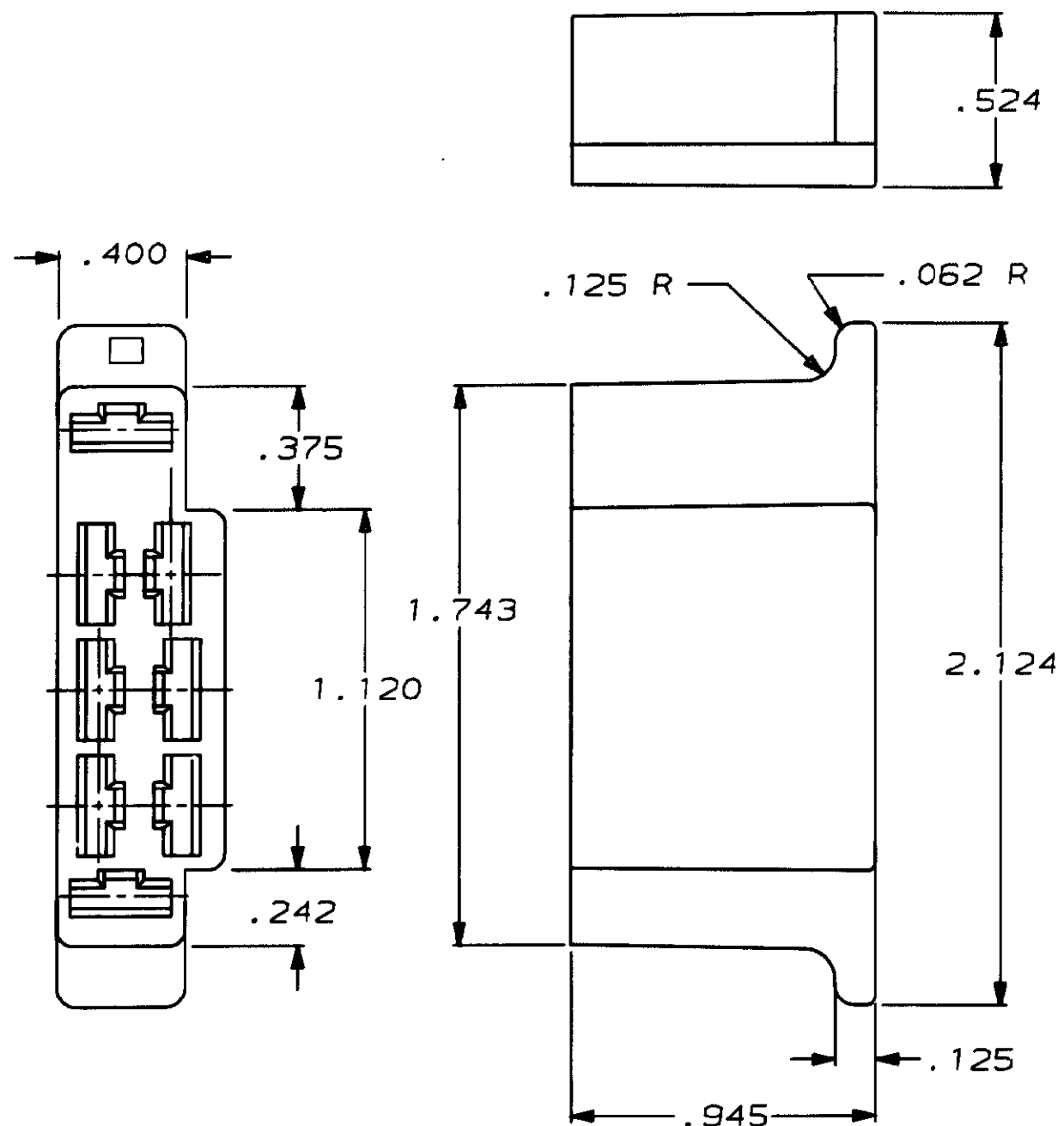


THIS DRAWING IS UNPUBLISHED. RELEASED FOR PUBLICATION ,19 .
 © COPYRIGHT 19 BY AMP INCORPORATED. ALL INTERNATIONAL RIGHTS RESERVED.

LOC	DIST	P	F	REVISIONS			
ZONE	LTR	DESCRIPTION	DATE	APPD			
AF	50			J	REDRAWN AF-7181	2/4/91	JR/P

1 CAVITIES ARE IDENTICAL IN THE FOLLOWING GROUPS; 1,2,3,4,7 & 8 ACCOMODATE .160 MAX INSUL. DIAMETER. CAVITIES 5 & 6 ACCOMODATE .190 MAX INSUL. DIA.



480173-1
PART NO

C - NOT SCALE PRINT. UNLESS SPECIFIED DIMENSIONS IN mm [INCHES] TOLERANCES ON: 2 PLC DEC ± - 3 PLC DEC ± .015 ANGLES ± -	DR 2/5/91	AMP AMP Incorporated Harrisburg, PA 17105-3608	
	CHK 2/5/91		
	APPD 2/5/91		
	APPD 2/5/91		
MATERIAL	6/6 NYLON	NAME	HOUSING, RECEPTACLE, FASTIN-FASTON, .250 SERIES
FINISH	NATURAL	SIZE	B
		CAGE CODE	00779
		DRAWING NO	480173
		SCALE	2:1
		SHEET	1 OF 1