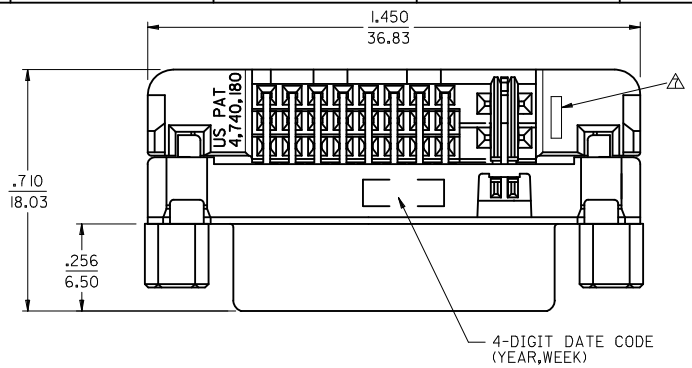


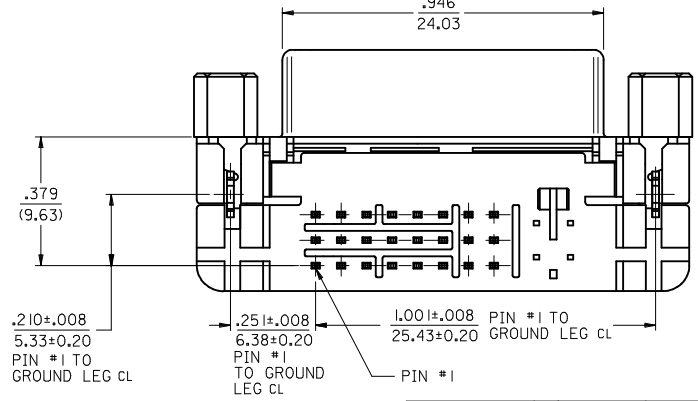
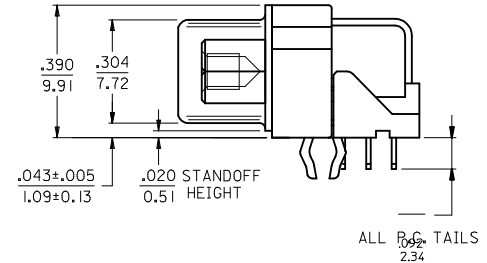
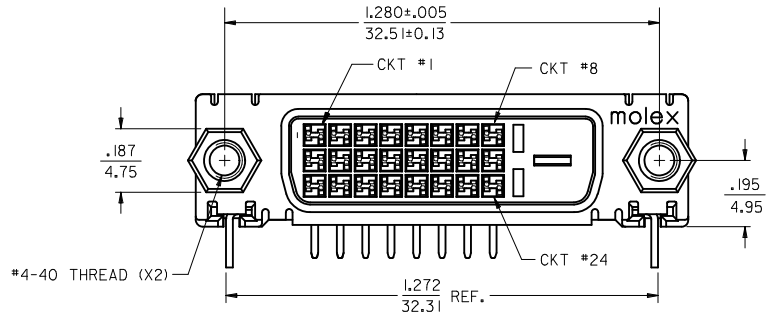
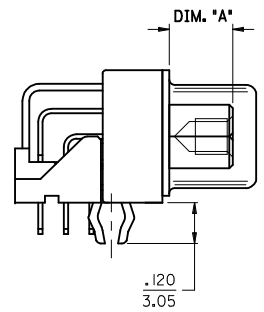
PART NUMBER	DIM *A*	PLATING OPTION
74320-9020	.187 4.75	1 (30µ Au)
74320-9024	.236 6.00	2 (Au FLASH)



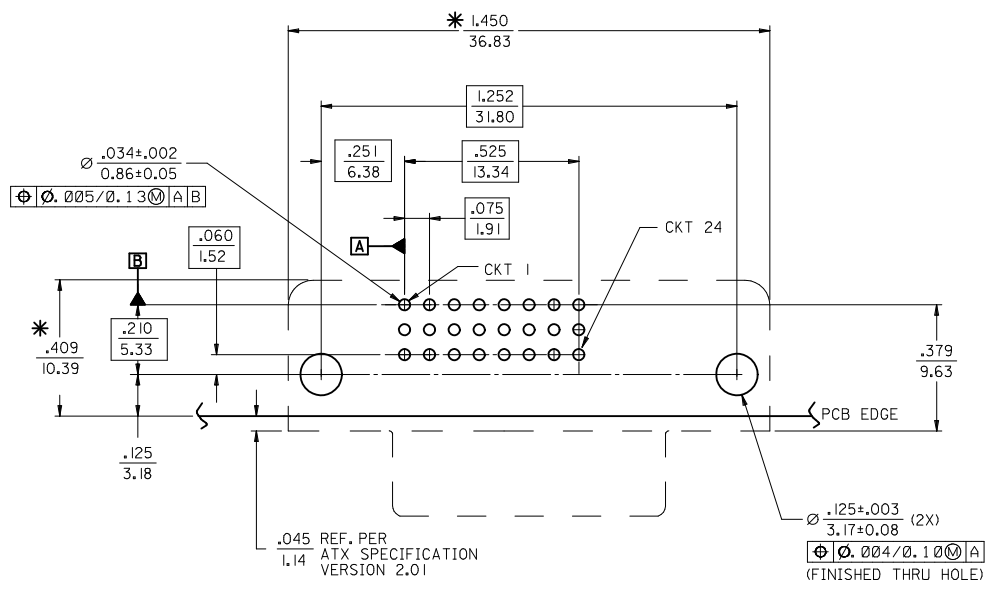
NOTES:

- MATERIALS:
  - SHIELD -- DEEP DRAW STEEL.
  - HOUSING -- GLASS FILLED POLYMER, WHITE/NATURAL, UL 94v-0.
  - TAIL ALIGNER -- GLASS FILLED POLYMER, WHITE/NATURAL, UL 94v-0.
  - CONTACTS -- COPPER ALLOY.
  - MICROCROSS GROUND -- COPPER ALLOY.
  - JACKPOSTS -- STEEL, ZINC PLATE W/CLEAR CHROMATE.
- PLATING: SEE SHEET 2
- PRODUCT CONFORMS TO MOLEX PRODUCT SPECIFICATION PS-74320-001.
- SEE SHEET 2 FOR RECOMMENDED P.C.B. LAYOUT.
- PARTS WILL BE PACKAGED IN TRAYS.
- PRODUCT CONFORMS TO DDWG DVI SPECIFICATION, REFER TO THIS SPECIFICATION FOR CONNECTOR INTERFACE DIMENSIONS.

△ CAVITY NO. AND MANUFACTURING PLANT CODE.

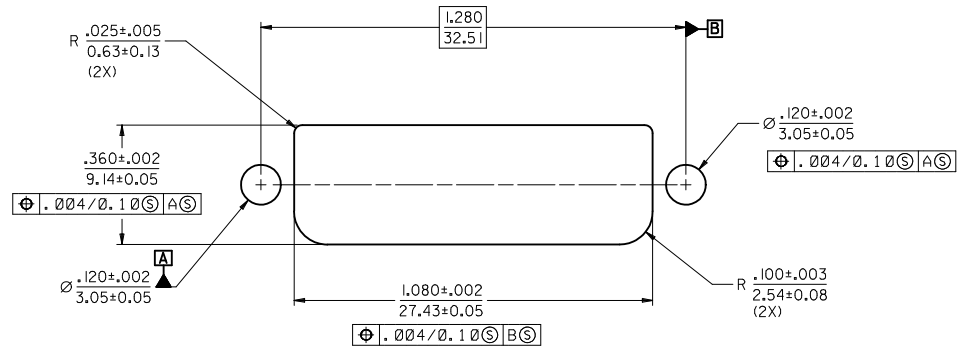


REVISE EC NO: SH2012-0047 DRWN:XJ.SONG 2011/08/19 CHKD:XJ.SONG 2011/08/19 APPR:R.ZHANG 2011/08/22	DESCRIPTION REV	QUALITY SYMBOLS	GENERAL TOLERANCES (UNLESS SPECIFIED)	DIMENSION STYLE	SCALE	DESIGN UNITS	THIRD ANGLE PROJECTION
		$\nabla=0$ $\square=0$	mm INCH 4 PLACES ± --- ± --- 3 PLACES ± --- ± .010 2 PLACES ± 0.25 ± .010 1 PLACE ± 0.25 ± .010 ANGULAR ± 1/2°	IN/MM DRAWN BY DATE TMCCLELL 99/12/07 CHECKED BY DATE SCHMIDGA 99/12/07 APPROVED BY DATE NELSON 99/12/07 MATERIAL NO.	1:1 INCH	TITLE DVI-D/ATX RIGHT ANGLE RECEPTACLE CONNECTOR W/JACKPOSTS	
		DRAFT WHERE APPLICABLE MUST REMAIN WITHIN DIMENSIONS	SEE TABLE	MOLEX INCORPORATED DOCUMENT NO. SD-74320-027	SHEET NO. 1 OF 2		
		THIS DRAWING CONTAINS INFORMATION THAT IS PROPRIETARY TO MOLEX INCORPORATED AND SHOULD NOT BE USED WITHOUT WRITTEN PERMISSION					



**RECOMMENDED PCB LAYOUT**  
COMPONENT SIDE OF PCB SHOWN

\* THESE DIMENSIONS REPRESENT CONNECTOR OVERLAY ON PCB.



**RECOMMENDED PANEL CUT-OUT**  
PANEL THICKNESS: .030" - .040"

**PLATING OPTIONS:**

- PLATING OPTION #1:  
 OUTER SHIELD -- 150u"/(3.75um) MIN. BRIGHT TIN OVER 50u"/(1.27um) MIN. NICKEL OVER COPPER FLASH  
 .075"/(1.91mm) CONTACTS -- 30u"/(0.75um) MIN. SELECT GOLD AND 100u"/(2.50um) MIN. SELECT PURE TIN OVER 50u"/(1.27um) MIN. NICKEL OVERALL.
- PLATING OPTION #2:  
 OUTER SHIELD -- 150u"/(3.75um) MIN. BRIGHT TIN OVER 50u"/(1.27um) MIN. NICKEL OVER COPPER FLASH  
 .075"/(1.91mm) CONTACTS -- SELECT GOLD FLASH AND 100u"/(2.50um) MIN. SELECT PURE TIN OVER 50u"/(1.27um) MIN. NICKEL OVERALL.

SEE SHEET1 EC NO: SH2012-0047 DRWN: XJ SONG 2011/08/19 CHKD: XJ SONG 2011/08/19 APPR: RZHANG 2011/08/22	QUALITY SYMBOLS	GENERAL TOLERANCES (UNLESS SPECIFIED)	DIMENSION STYLE		SCALE	DESIGN UNITS	THIRD ANGLE PROJECTION
	▽=0 ∇=0		IN/MM	1:1	INCH		
REV	DESCRIPTION	4 PLACES ± --- ± ---	DRAWN BY	DATE	TITLE		
		3 PLACES ± --- ± .010	TMCCLELL	99/12/07	DVI-D/ATX RIGHT ANGLE RECEPTACLE CONNECTOR W/JACKPOSTS		
		2 PLACES ± 0.25 ± .010	CHECKED BY	DATE	MOLEX INCORPORATED		
		1 PLACE ± 0.25 ± .010	SCHMIDGA	99/12/07	MATERIAL NO. DOCUMENT NO. SHEET NO.		
		ANGULAR ±1/2°	APPROVED BY	DATE	SD-74320-027		
			NELSON	99/12/07	2 OF 2		
			DRAFT WHERE APPLICABLE MUST REMAIN WITHIN DIMENSIONS		THIS DRAWING CONTAINS INFORMATION THAT IS PROPRIETARY TO MOLEX INCORPORATED AND SHOULD NOT BE USED WITHOUT WRITTEN PERMISSION		