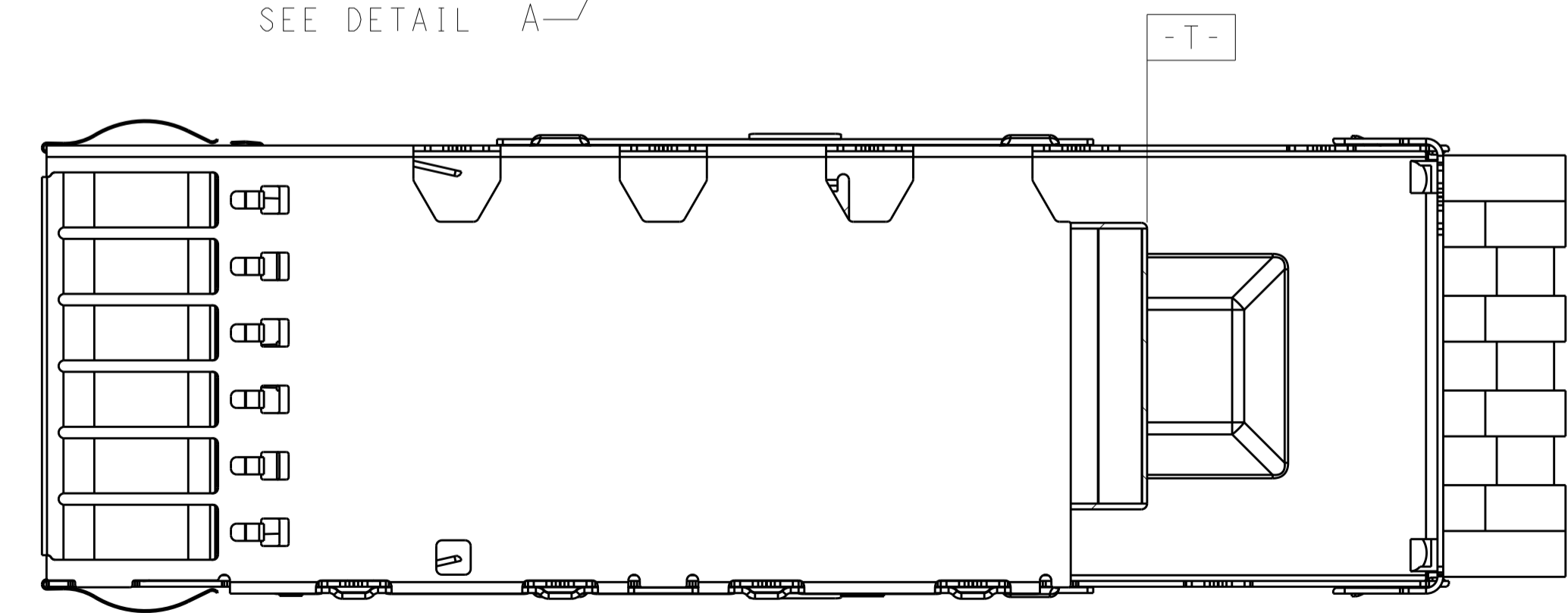
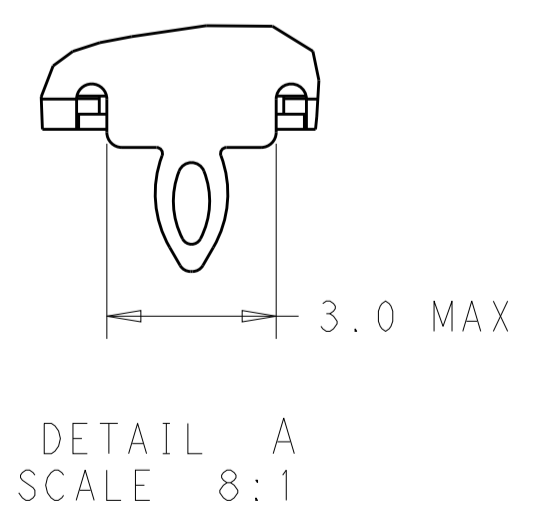
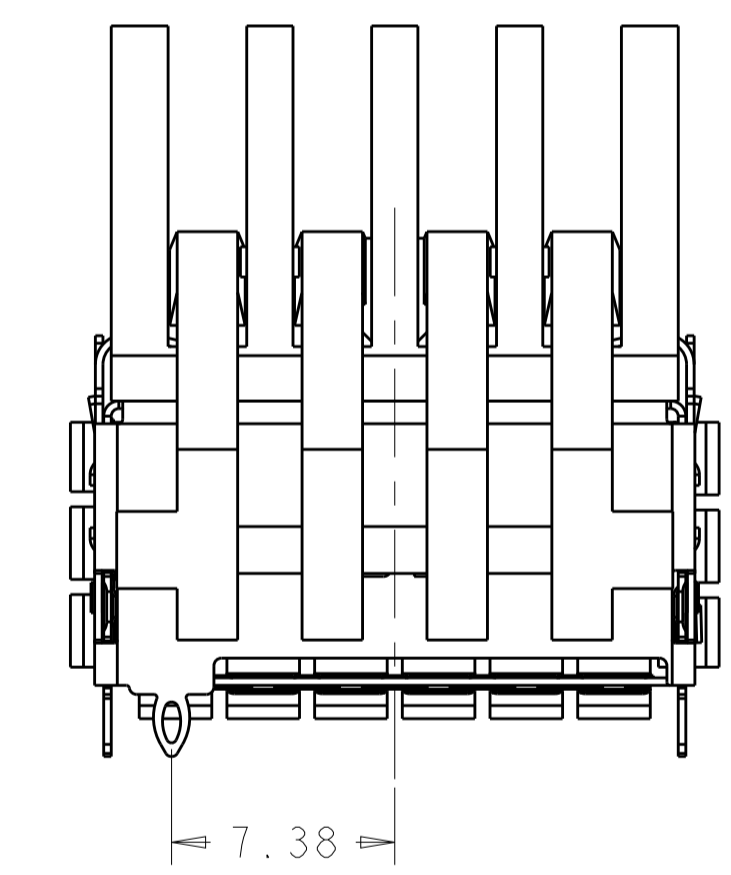
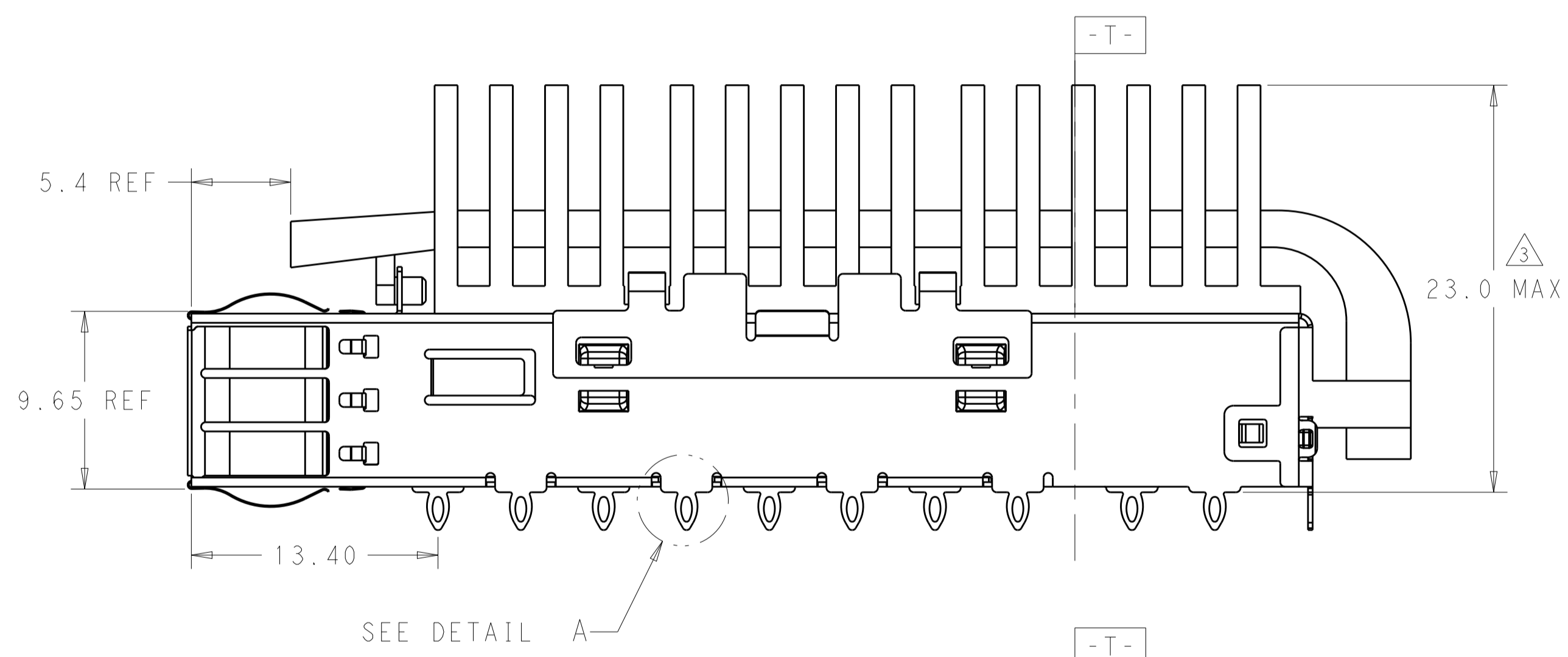
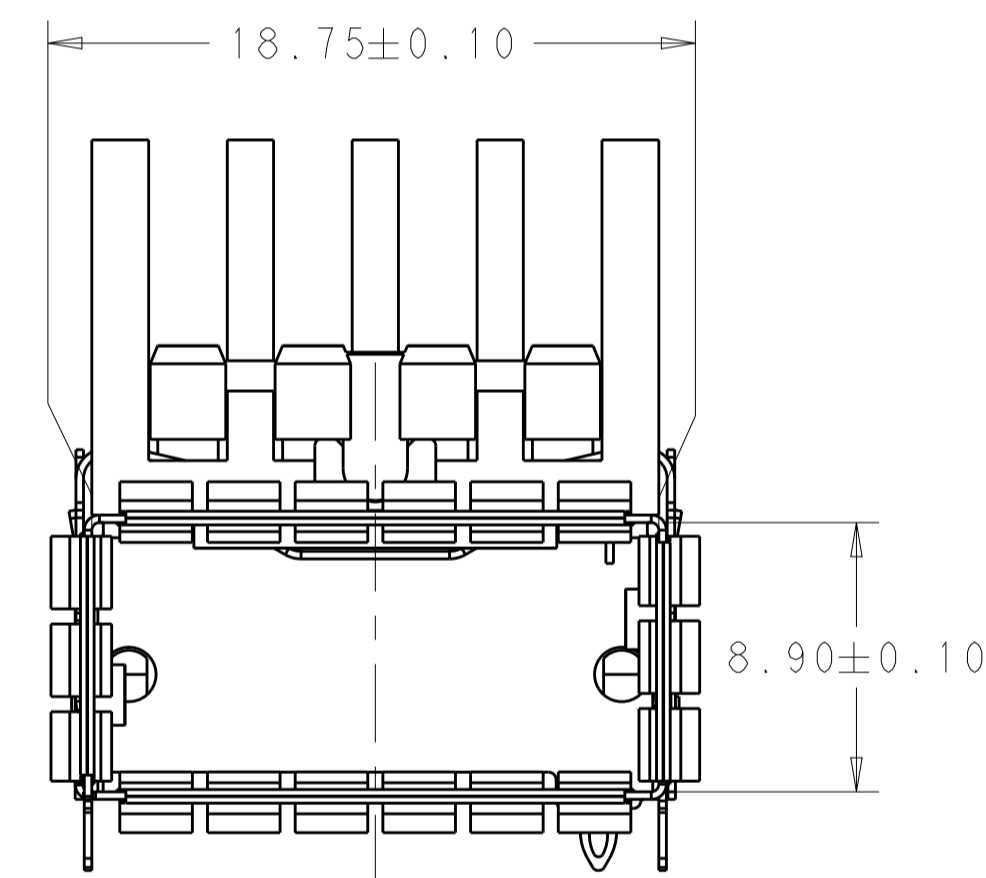
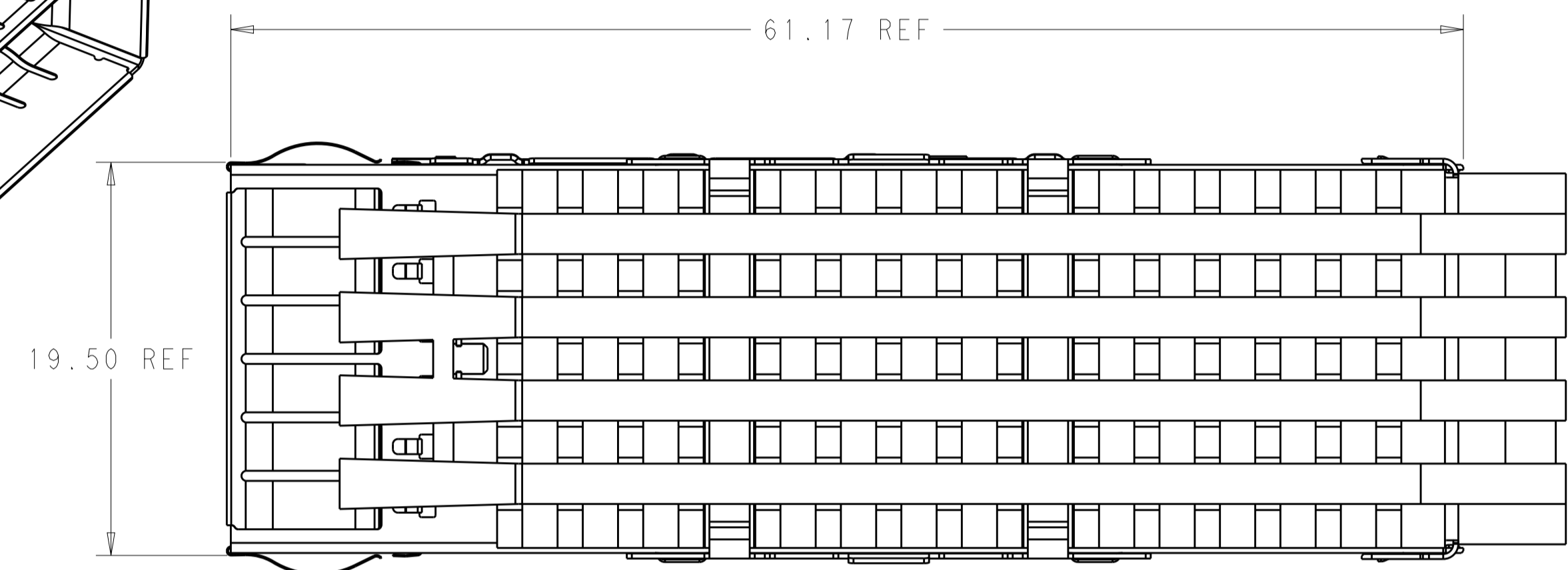
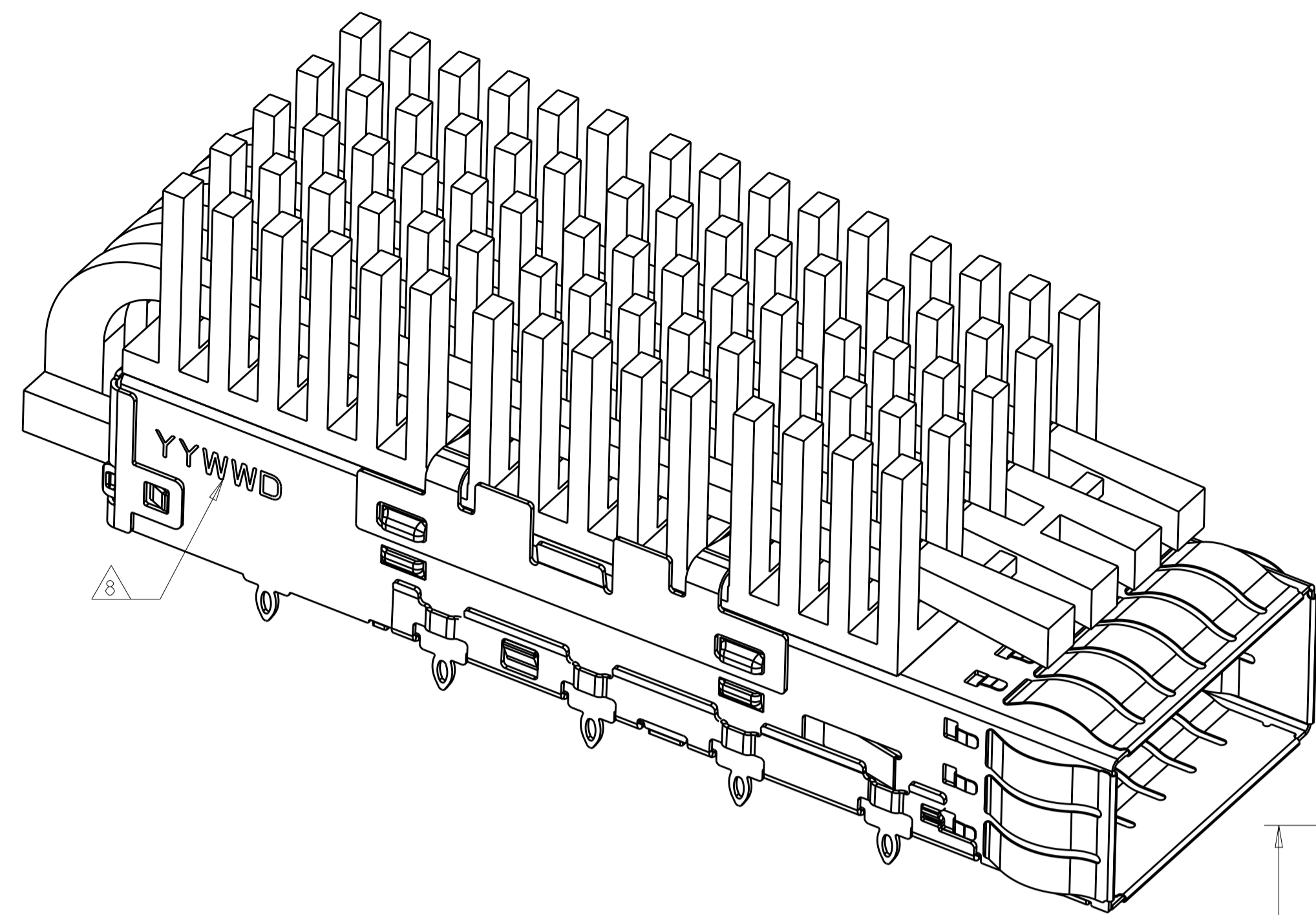


LOC	DIST	REVISIONS					
		P	LTN	DESCRIPTION	DATE	DWN	APVD
		A		RELEASE	01NOV2016	JY	SH



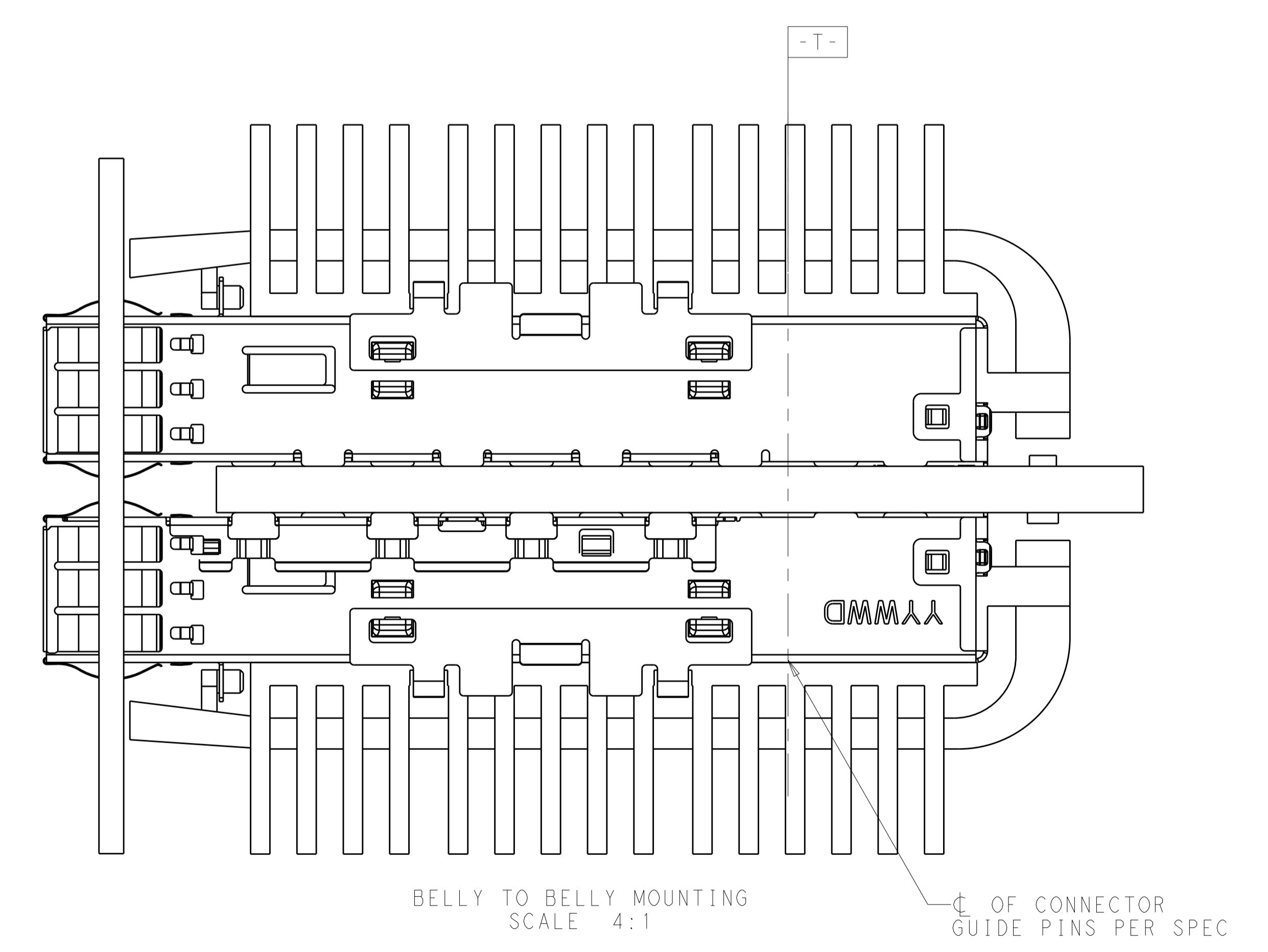
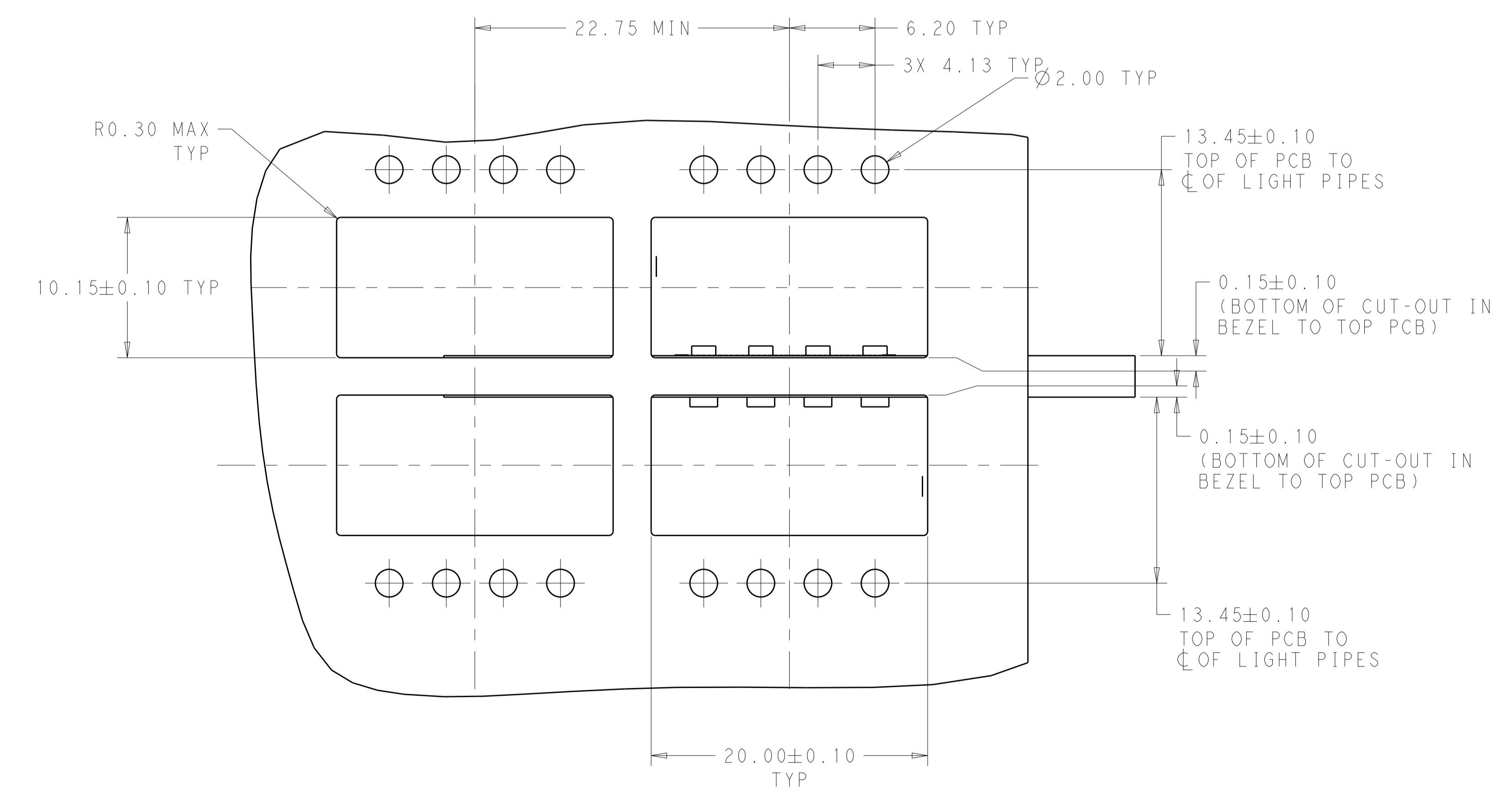
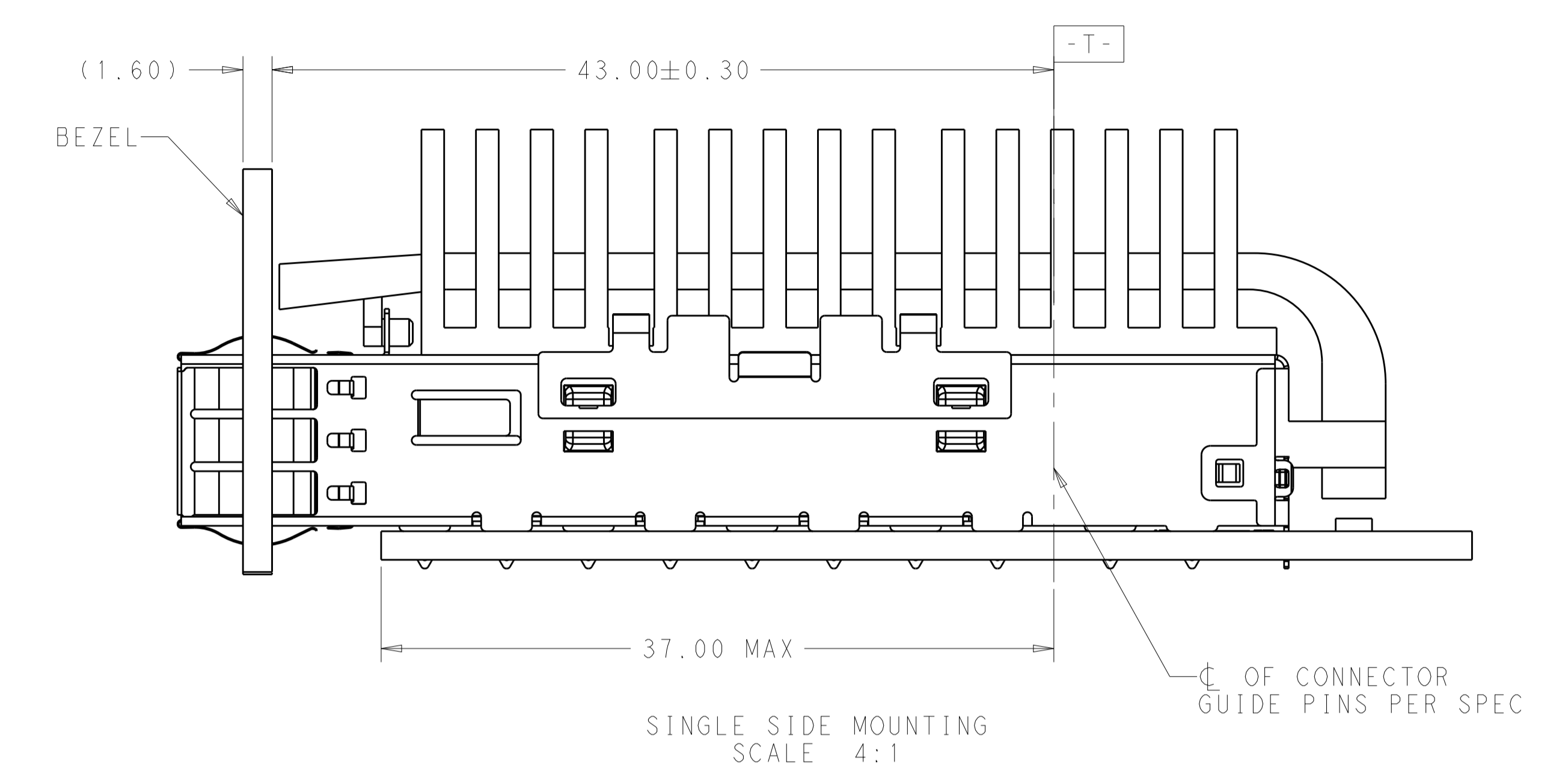
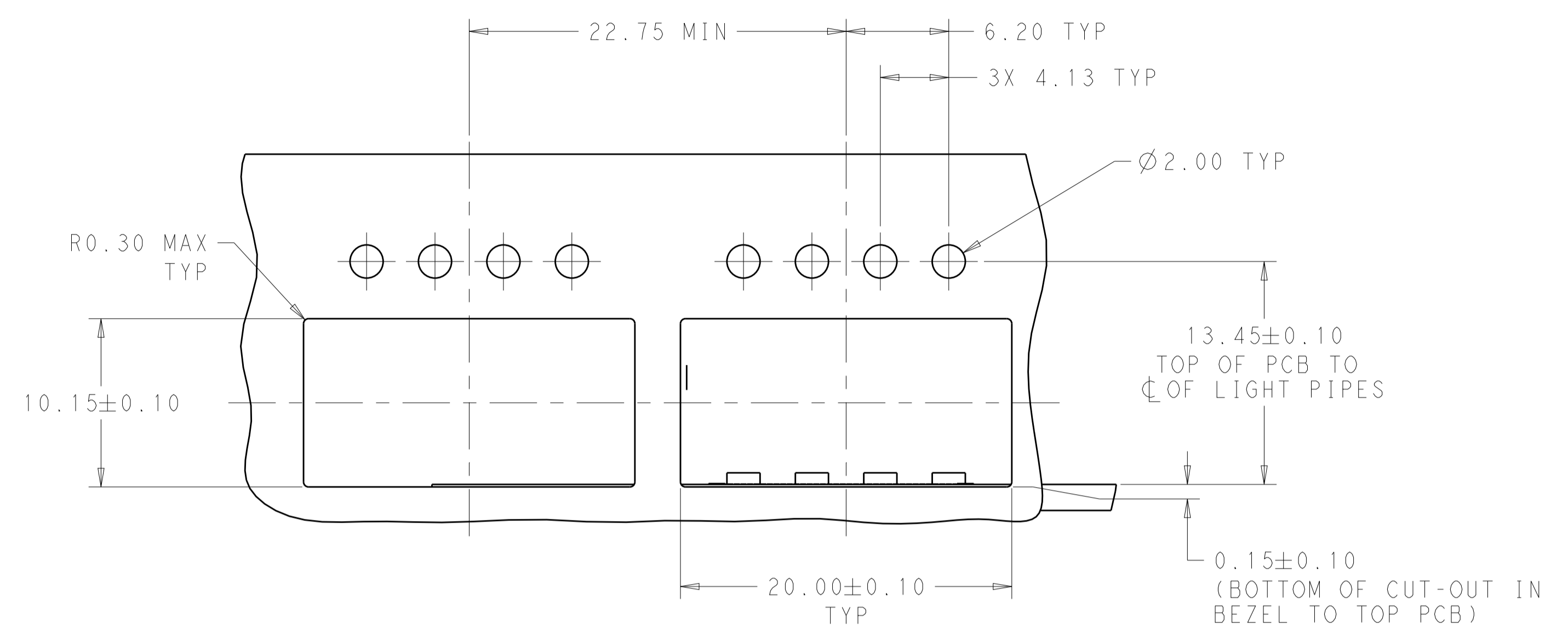
- MATERIAL:
 CAGE MATERIAL : 0.25 THICK NICKEL SILVER.
 SPRING MATERIAL : COPPER ALLOY
 HEAT SINK MATERIAL : ALUMINUM
 CLIP MATERIAL : STAINLESS STEEL
 LIGHT PIPE MATERIAL : POLYCARBONATE WITH 94 V-0
 - FINISH:
 SPRING : NICKEL PLATING
 HEAT SINK : BLACK ANODIZE
- ⚠ DIMENSION APPLIES WITH MODULE INSTALLED IN THE CAGE TO TOP OF HEAT SINK.
 - ⚠ REFERENCE APPLICATION SPEC 114-32023 FOR RECOMMENDED DRILL HOLE DIAMETER AND PLATING THICKNESS.
 - ⚠ DATUM AND BASIC DIMENSIONS ESTABLISHED BY CUSTOMERS.
 - 6. MINIMUM PC BOARD THICKNESS : SINGLE SIDED: 1.57 MIN
DOUBLE SIDED: 2.20 MIN
 - ⚠ DATUM -A- IS TOP SURFACE OF THE HOST BOARD.
 - ⚠ DATE CODE (YYWW) MARKED APPROXIMATELY AS SHOWN
 - 9. MATES WITH QSFP28 MSA COMPATIBLE TRANSCEIVER.

NET WORKING	2293574-1
APPLICATION (HEAT SINK OPTION)	PART NUMBER

THIS DRAWING IS A CONTROLLED DOCUMENT.		DWN: JASON YANG 09JUN2015	TE Connectivity
DIMENSIONS: mm		CHK: SEAN HAN 09JUN2015	
TOLERANCES UNLESS OTHERWISE SPECIFIED:		APVD: MARSHALL CHEN 09JUN2015	NAME: CAGE ASSEMBLY, QSFP28, THRU BEZEL WITH EMI SPRING FINGER HEAT SINK, LIGHT PIPE SIZE: A1 CAGE CODE: 108-19428 DRAWING NO: 114-32023 CUSTOMER DRAWING
0 PLC ±0.25 1 PLC ±0.25 2 PLC ±0.25 3 PLC ±0.25 4 PLC ±0.100 ANGLES ±°		PRODUCT SPEC: 108-19428 APPLICATION SPEC: 114-32023 WEIGHT: - FINISH: -	
MATERIAL: -		RESTRICTED TO: -	SCALE: 2:1
SHEET 1 OF 4		REV: A	

LOC	DIST	REV	DATE	BY	APPV
		1			

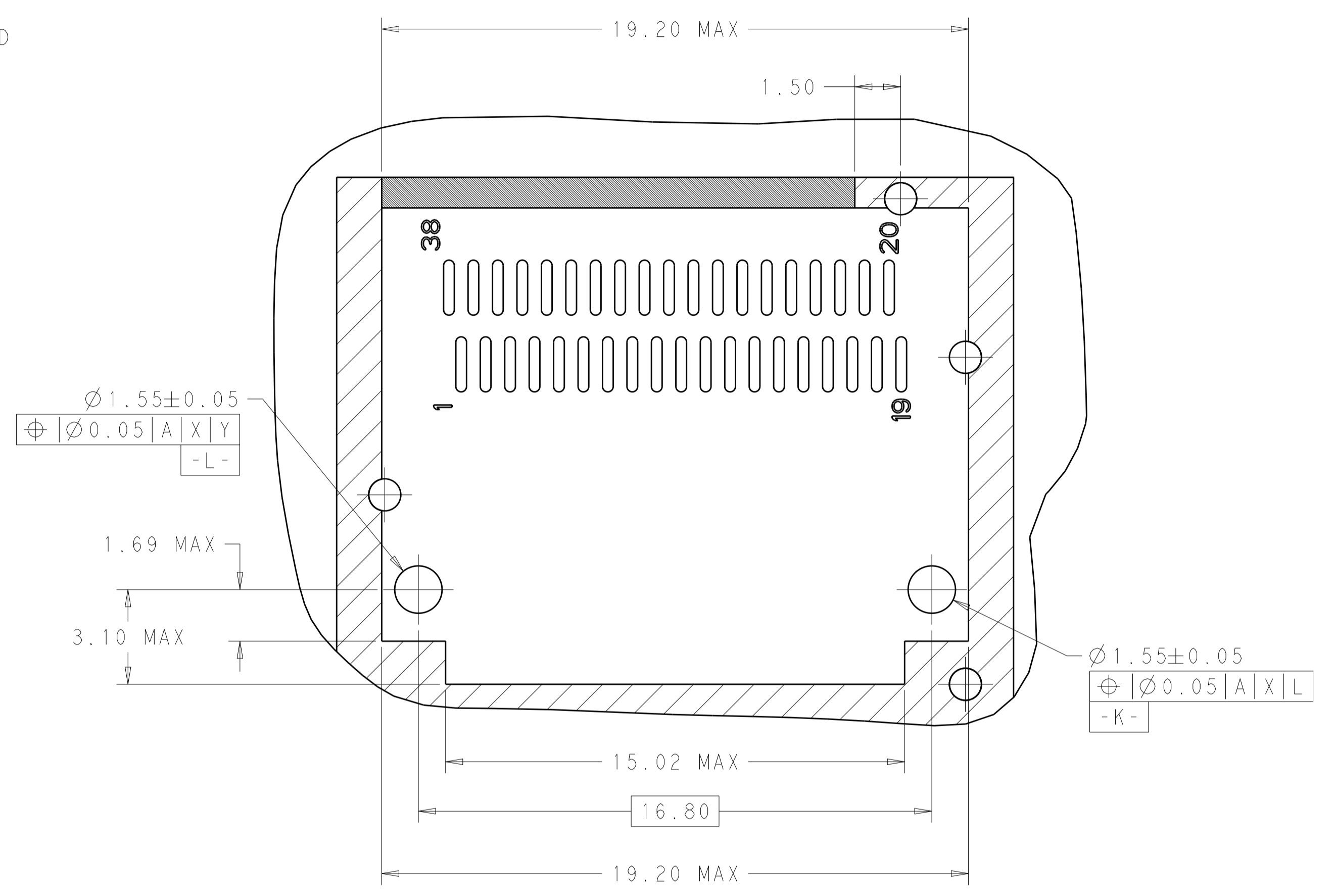
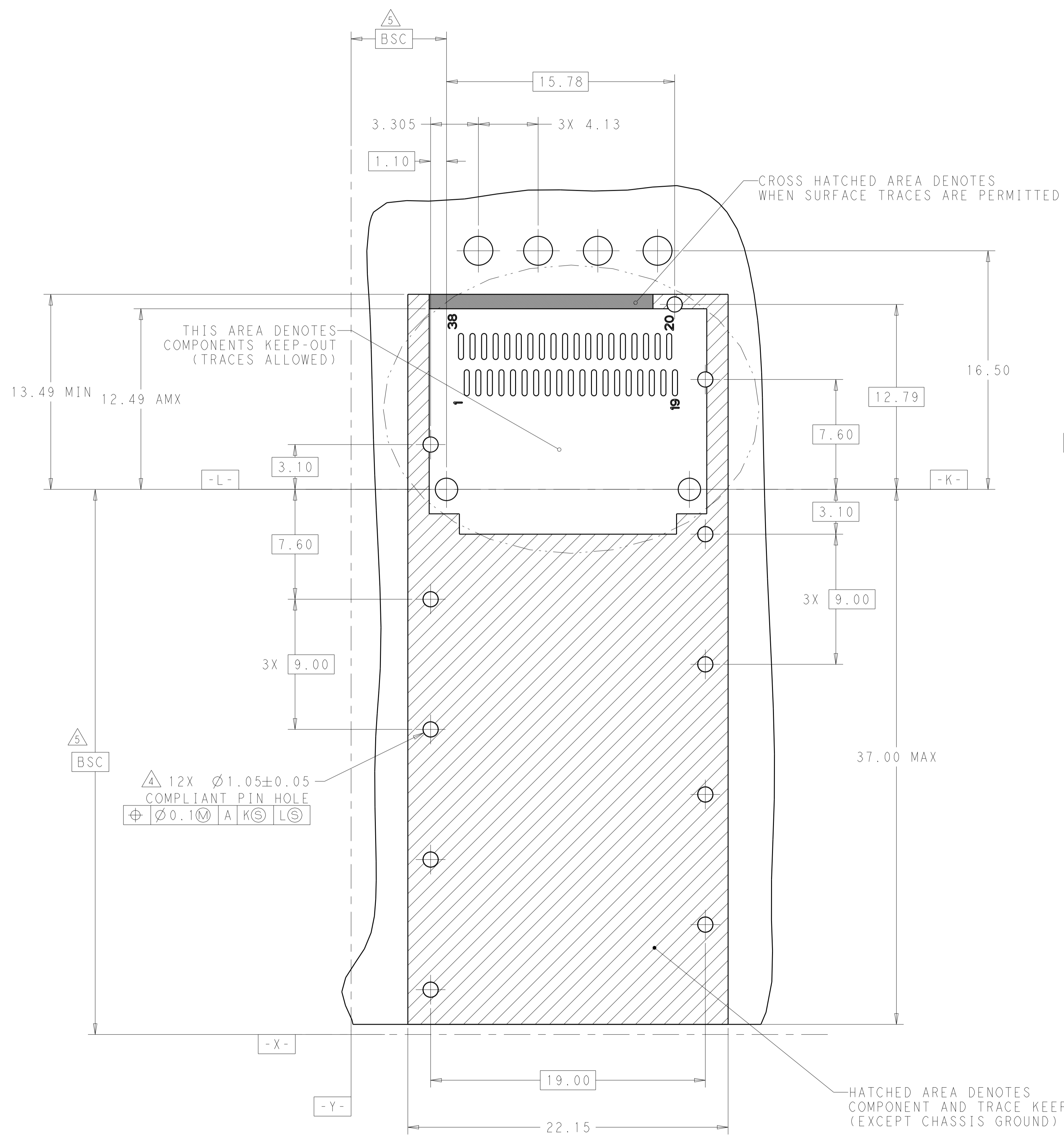
REVISIONS		DATE	BY	APPV
P	LTN			
-	SEE SHEET 1	-	-	-



THIS DRAWING IS A CONTROLLED DOCUMENT.		OWN: JASON YANG 09JUN2015	TE Connectivity NAME: CAGE ASSEMBLY, QSFP28, THRU BEZEL WITH EMI SPRING FINGER HEAT SINK, LIGHT PIPE SIZE: CAGE CODE DRAWING NO: A100779 WEIGHT: 114-32023 CUSTOMER DRAWING
DIMENSIONS: mm		CHK: SEAN HAN 09JUN2015	
TOLERANCES UNLESS OTHERWISE SPECIFIED:		APVD: MARSHALL CHEN 09JUN2015	
0 PLC ±0.25 1 PLC ±0.25 2 PLC ±0.25 3 PLC ±0.25 4 PLC ±0.100 ANGLES ±°		PRODUCT SPEC: 108-19428 APPLICATION SPEC: SCALE: 2:1 SHEET 2 OF 4 REV A	
MATERIAL: -		FINISH: -	

LOC	DIST	REV	DATE	BY	APPV
		1			

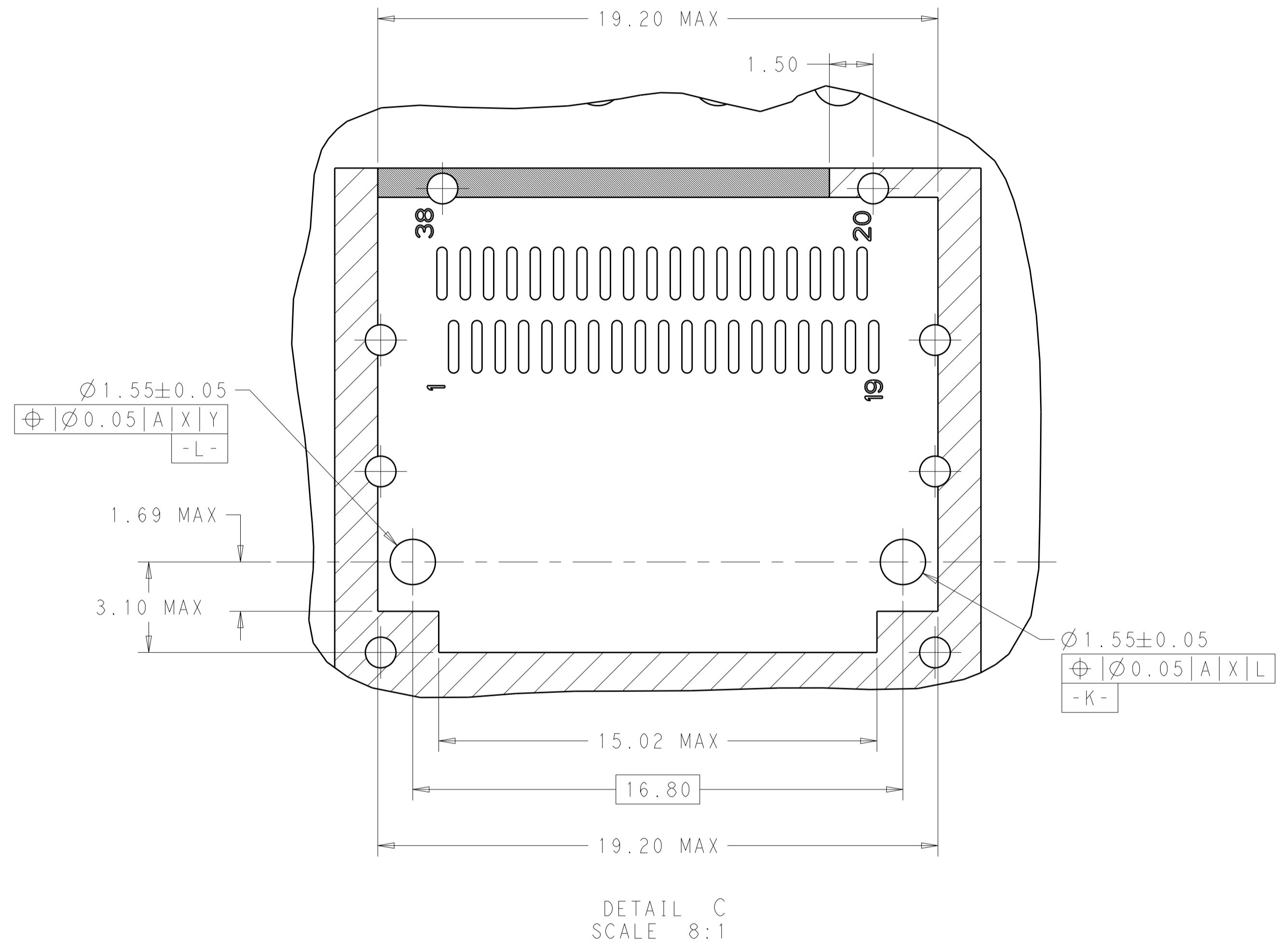
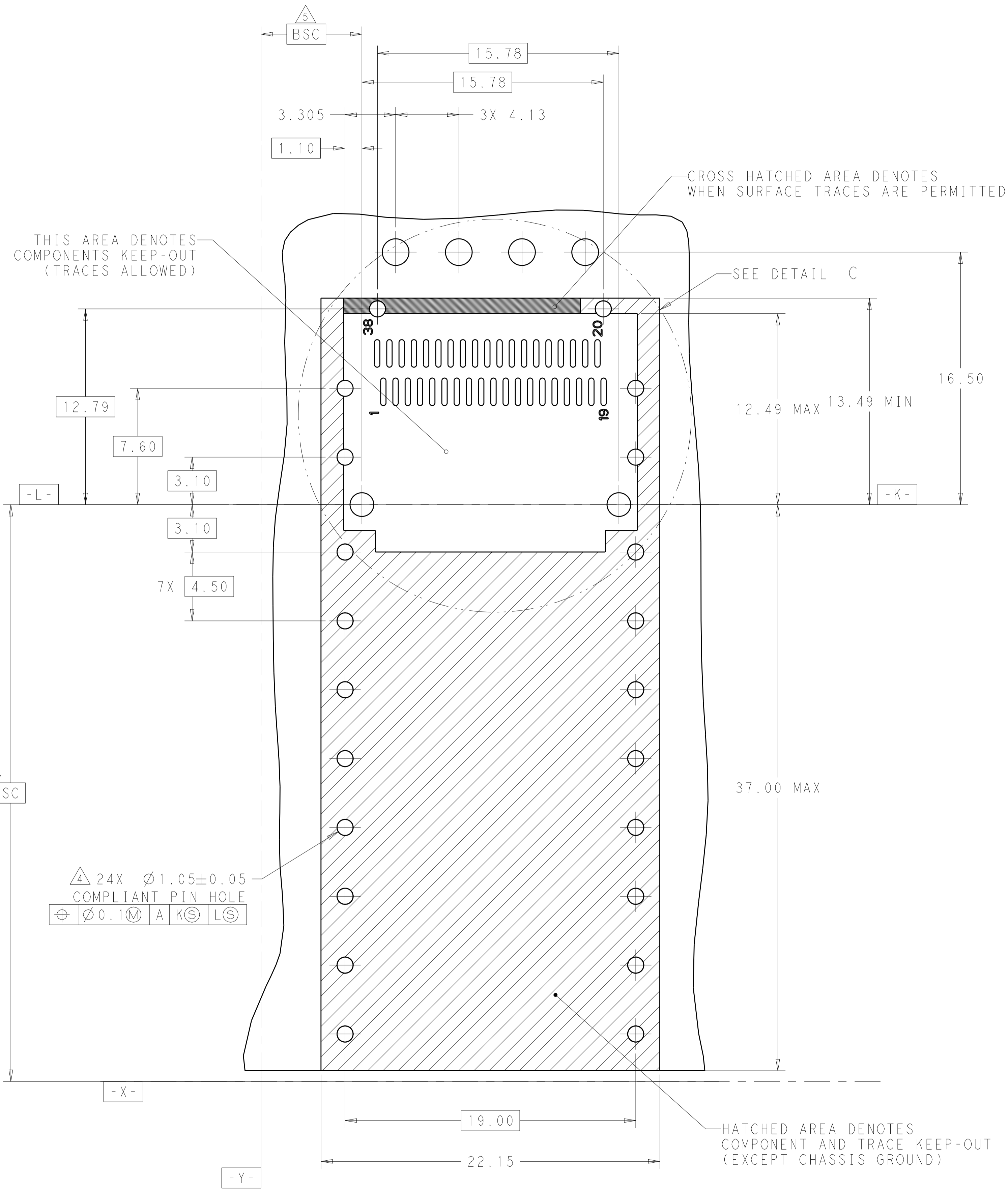
REV	DESCRIPTION	DATE	BY	APPV
-	SEE SHEET 1	-	-	-



RECOMMENDED PCB LAYOUT
 SINGLE TYPE OF 2 REAR HOLES OF LEGS
 PCB TOLERANCE: ±0.05
 SCALE 6:1

THIS DRAWING IS A CONTROLLED DOCUMENT.		DWN: JASON YANG 09JUN2015	TE Connectivity
DIMENSIONS: mm		CHK: SEAN HAN 09JUN2015	
TOLERANCES UNLESS OTHERWISE SPECIFIED:		APVD: MARSHALL CHEN 09JUN2015	
0 PLC ±0.25 1 PLC ±0.25 2 PLC ±0.25 3 PLC ±0.100 4 PLC ± ANGLES ±°		NAME: CAGE ASSEMBLY, QSPF28, THRU BEZEL WITH EMI SPRING FINGER HEAT SINK, LIGHT PIPE PRODUCT SPEC: 108-19428 APPLICATION SPEC: 114-32023 WEIGHT:	
MATERIAL:	FINISH:	114-32023	RESTRICTED TO:
CUSTOMER DRAWING		SCALE 2:1	SHEET 3 OF 4 REV A

LOC		DIST		REVISIONS			
P	LTN	DESCRIPTION	DATE	DMN	APVD		
-	-	SEE SHEET 1	-	-	-		



RECOMMENDED PCB LAYOUT
 BELLY TO BELLY TYPE OF 2 REAR HOLES OF LEGS
 PCB TOLERANCE: ±0.05
 SCALE 6:1

THIS DRAWING IS A CONTROLLED DOCUMENT.		DMN: JASON YANG 09JUN2015	TE Connectivity
DIMENSIONS: mm		CHK: SEAN HAN 09JUN2015	
TOLERANCES UNLESS OTHERWISE SPECIFIED:		APVD: MARSHALL CHEN 09JUN2015	NAME: CAGE ASSEMBLY, QSPF28, THRU BEZEL WITH EMI SPRING FINGER HEAT SINK, LIGHT PIPE
0 PLC ±0.25 1 PLC ±0.25 2 PLC ±0.25 3 PLC ±0.25 4 PLC ±0.100 ANGLES ±°		PRODUCT SPEC: 108-19428	
MATERIAL: -		APPLICATION SPEC: 114-32023	SIZE: A1
FINISH: -		WEIGHT: -	CAGE CODE: 2293574
		CUSTOMER DRAWING	SCALE: 2:1 SHEET 4 OF 4 REV A