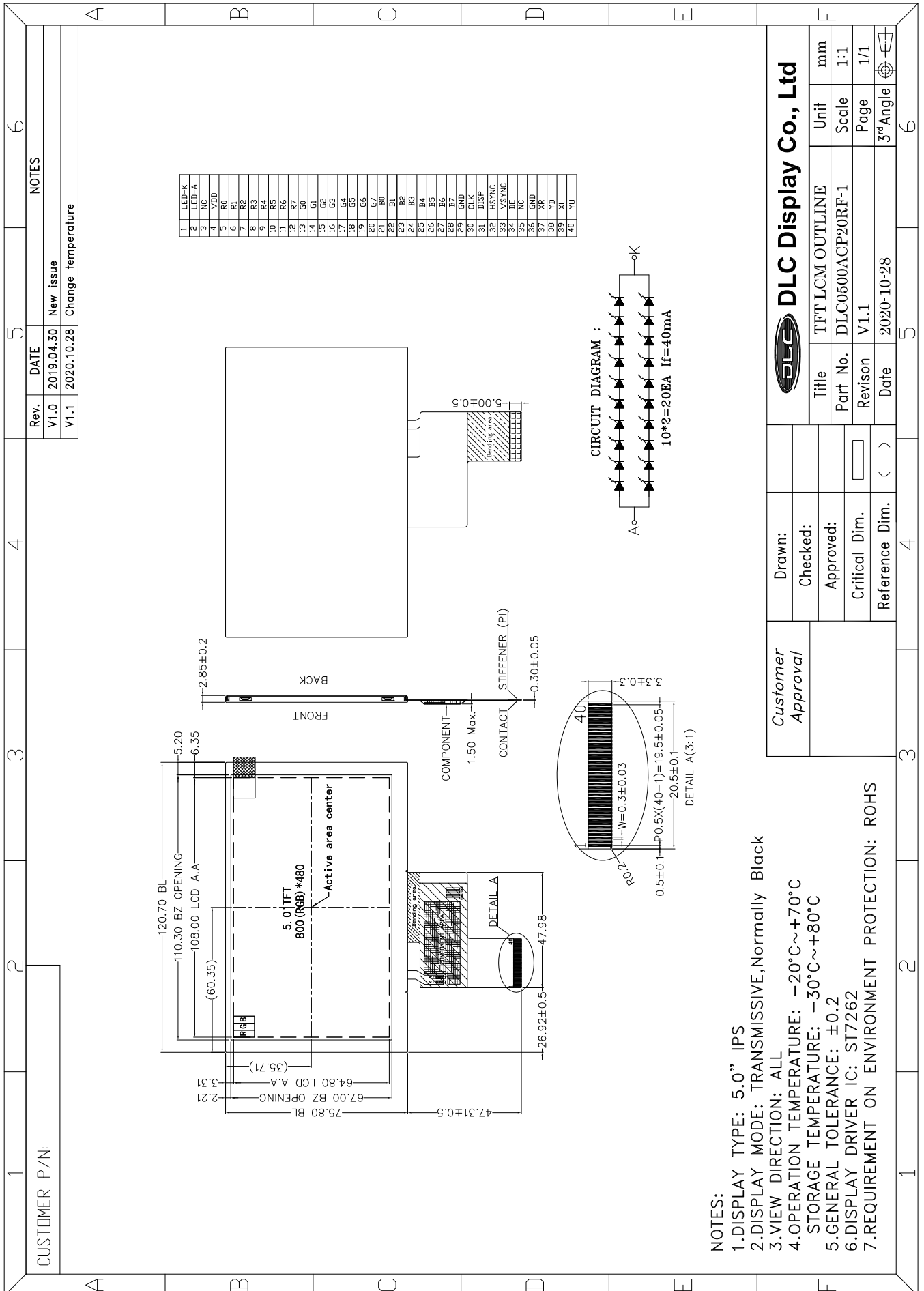




Outline Drawing



NOTES:

- 1.DISPLAY TYPE: 5.0" IPS
- 2.DISPLAY MODE: TRANSMISSIVE, Normally Black
- 3.VIEW DIRECTION: ALL
- 4.OPERATION TEMPERATURE: -20°C~+70°C
- 5.STORAGE TEMPERATURE: -30°C~+80°C
- 6.GENERAL TOLERANCE: ±0.2
- 7.DISPLAY DRIVER IC: ST7262
- 7.REQUIREMENT ON ENVIRONMENT PROTECTION: ROHS

Customer Approval	Drawn:	
	Checked:	
	Approved:	
	Critical Dim.	
	Reference Dim.	()
	DLC Display Co., Ltd	
	Title	TFT LCM OUTLINE
	Part No.	DLC0500ACP20RF-1
	Revision	V1.1
	Date	2020-10-28
	Unit	mm
	Scale	1:1
	Page	1/1
	3° Angle	