



For more information,
visit [freescale.com/
sensortoolbox](http://freescale.com/sensortoolbox)

FRDM
KL25-
P3115

Freescale and the Freescale logo are trademarks of Freescale Semiconductor, Inc. Reg., U.S. Pat. & Tm. Off. All other product or service names are the property of their respective owners.
© 2015 Freescale Semiconductor, Inc.
FRDMK25P3115QRC REV 1
920-288986 REV A

FRDMKL25-P3115

FRDM
KL25-
P3115



Quick Reference Card

Pressure Sensor Toolbox Demonstration Kit

FRDMSTBC-P3115 with MPL3115A2 I²C precision altimeter and Freescale Freedom FRDM-KL25Z development board



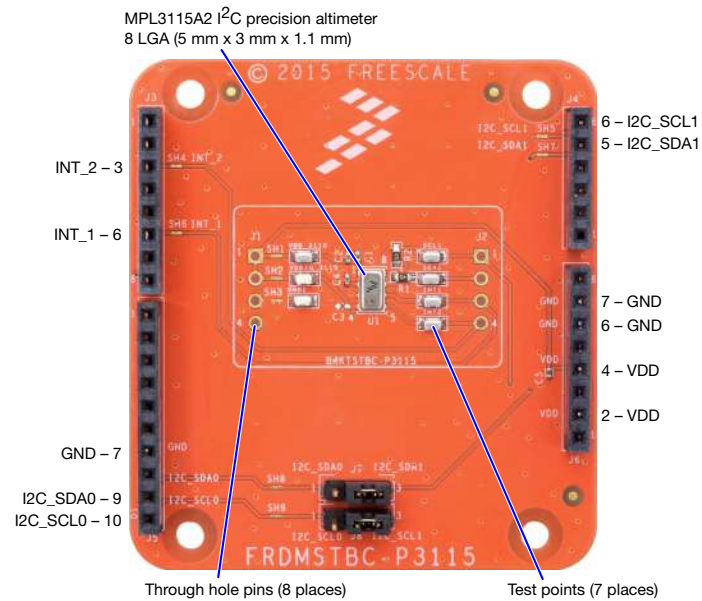
Get Started

Download tools and documentation under **Jump Start Your Design** at freescale.com/sensortoolbox



FREESCALE FREEDOM PLATFORM

- 1 Verify package contents:
 - FRDM-KL25Z/FRDMSTBC-P3115 assembly
 - USB cable
 - Flexible tube
- 2 Download the mbed Windows serial port driver: developer.mbed.org/handbook/Windows-serial-configuration
- 3 Plug one end of a USB cable into the SDA port on the assembly. Plug the other end of the cable into the USB port on the computer.
- 4 Download and install the latest Sensor Toolbox software at: freescale.com/sensortoolbox
- 5 Start the Sensor Toolbox software.



Get to Know the FRDMKL25-P3115



Learn more at freescale.com/sensortoolbox.