

6

5

4

3

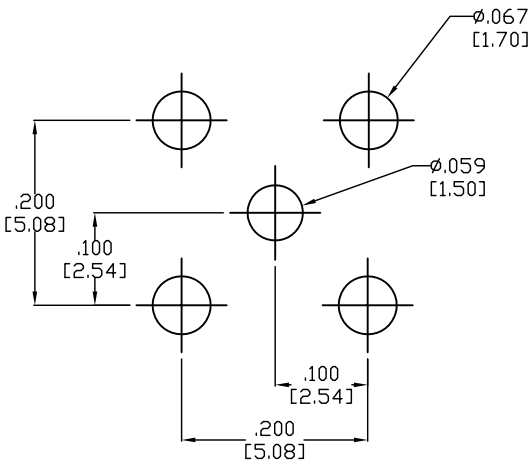
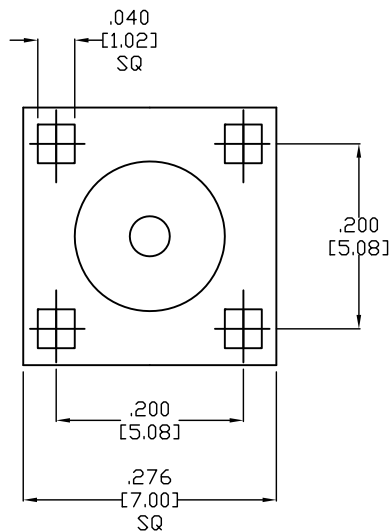
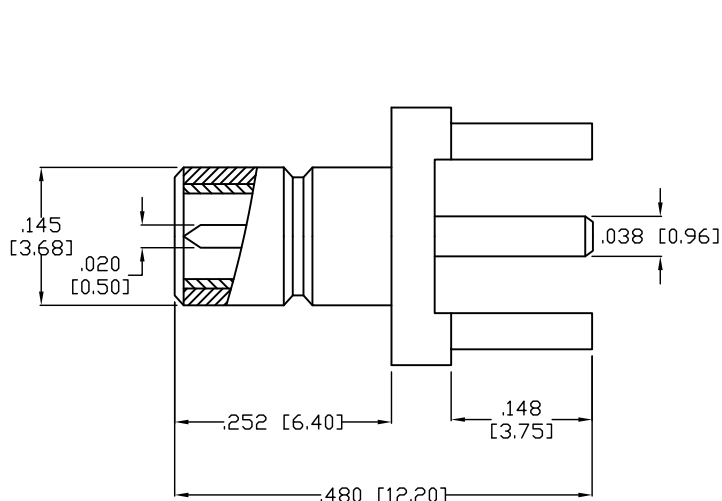
2

1

APPROVED: _____

DATE: _____ TITLE: _____

Rev	AWO #	Description	Date	Appr
-	7736	RELEASED	5/8/07	
A		REDRAWN	12/22/11	



RECOMMENDED PCB LAYOUT

SPECIFICATIONS:

Electrical:

- Nominal Impedance: 50 ohms
- Frequency range: 8 GHz
- Working Voltage: 170 VRMS max.
- Dielectric Withstanding Voltage: 750 VRMS min.
- Contact Resistance: 5.0 Milliohms. (Center Contact)
2.5 Milliohms. (Outer Contact)
- Insulator Resistance: 1000 Megohms.

Environmental:

Lead free, RoHS compliant.

PIN	BRASS	GOLD
INSULATOR	TEFLON	
BODY	BRASS	GOLD
DESCRIPTION	MATERIAL	FINISH

UNLESS OTHERWISE SPECIFIED ALL DIMENSIONS ARE INCHES [MM] TOLERANCES: EXCEPT AS NOTED			
INCHES		HOLES	
.X	± .10	Ø.X	± .10
.XX	± .020	Ø.XX	± .015
.XXX	± .015	Ø.XXX	± .010

APPROVALS		DATE
DRAWN	BW	5/8/07
CHECKED		
APPROVED		

ADAM TECH

909 Rahway Avenue, Union, NJ 07083
Phone: 908-687-5000 Fax: 908-687-5710

TITLE
VERTICAL PCB MOUNT THROUGH HOLE
SMB JACK, 50 OHM

SIZE X	PART NO. RF3-05-T-00-50-G	REV. A
REF: S00049T	SCALE: NTS	SHEET 1 OF 1

6

5

4

3

2

1