

NOTES: UNLESS OTHERWISE SPECIFIED.

1. MATERIAL AND FINISH:

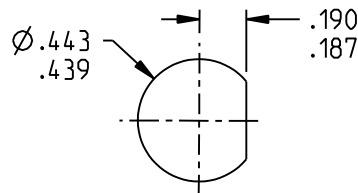
- 1.1 BODY & PANEL NUT: NICKEL PLATED BRASS
- 1.2 CENTER CONTACT: GOLD PLATED BERYLLIUM COPPER
- 1.3 INTERMEDIATE CONTACT: GOLD PLATED BRASS
- 1.4 DIELECTRIC (INNER & OUTER): PTFE (TEFLON)
- 1.5 LOCK WASHER: NICKEL PLATED COPPER ALLOY
- 1.6 GASKET: SILICONE RUBBER

2. ELECTRICAL:

- 2.1 IMPEDANCE: NON-CONSTANT
- 2.2 FREQUENCY (MAX): 500 MHz

3. PANEL NUT TORQUE (MAX): 35 INCH POUND

4. PANEL THICKNESS (MAX): .190



RECOMMENDED  
PANEL CUTOUT

|   |                          |  |                                     |                                |
|---|--------------------------|--|-------------------------------------|--------------------------------|
|   |                          |  | <h1>TROMPETER</h1>                  |                                |
| <small>This PROPRIETARY Document is property of Cinch Connectivity Solutions. It is confidential in nature, non-transferable, and issued with the clear understanding that it is not traced or copied without permission and is returnable upon demand.</small> |                          | <b>RoHS2</b> <input checked="" type="checkbox"/><br>2011/65/EU | Title: <b>TTM BHD FEEDTHRU</b>      |                                |
| <small>UNLESS OTHERWISE SPECIFIED<br/>UNITS: INCH</small>   |                          | <small>Model No.</small><br>BJJ3158                            | <small>Model No.</small><br>BJJ3158 |                                |
| <small>INTERPRET DRAWING IN ACCORDANCE WITH ASME Y14.5-2009.</small>  | <small>Size</small><br>A | <small>DO NOT SCALE DRAWING</small>                            | <small>Date:</small><br>3/30/2016   | <small>Sheet</small><br>1 OF 1 |