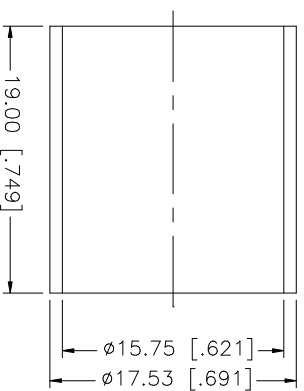
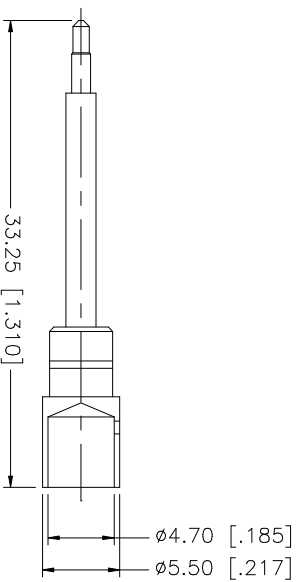
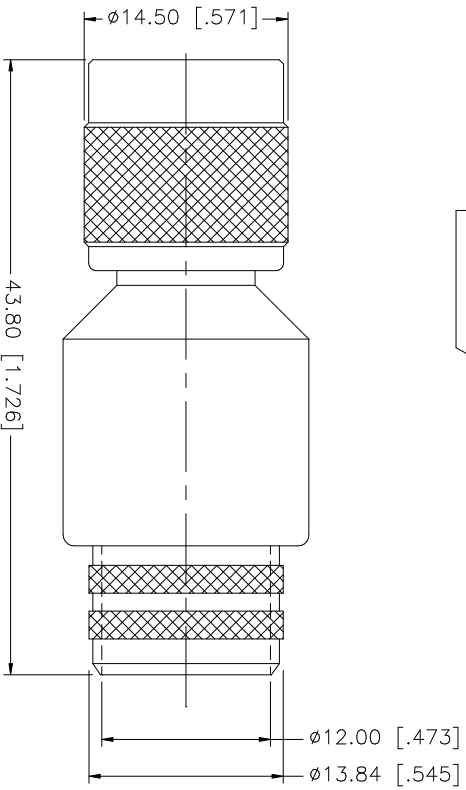
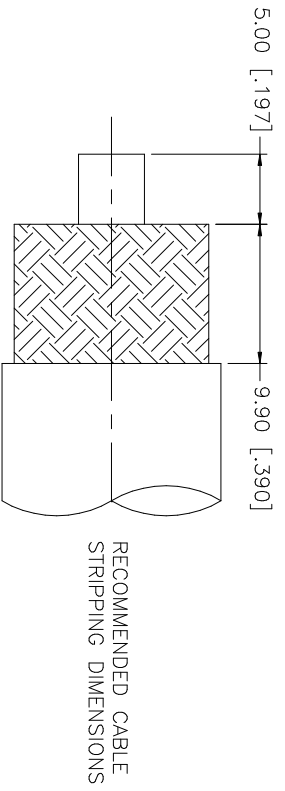


REV.	DATE	DESCRIPTION
A	10/25/99	UPDATE CONTACT PIN
B	03/18/05	UPDATE DRAWING FORMAT
C	06/01/06	ADD CRIMP NOTES



- NOTE:
1. USE CONNEX CRIMP HANDLE #47-4009-20 W/DIE #47-4009-01 TO CRIMP FERRULE.
 2. SOLDER CENTER CONTACT.

8							UNLESS OTHERWISE SPECIFIED, DIMENSIONS ARE IN MILLIMETERS. DIMENSIONS IN INCHES ARE IN INCHES AND FOR CUSTOMER REFERENCE ONLY.						
7							UNLESS OTHERWISE SPECIFIED, DIMENSIONS ARE IN MILLIMETERS. DIMENSIONS IN INCHES ARE IN INCHES AND FOR CUSTOMER REFERENCE ONLY.	DRAWN	G.R.S.	06/01/06	APPROVALS		
6							UNLESS OTHERWISE SPECIFIED, DIMENSIONS ARE IN MILLIMETERS. DIMENSIONS IN INCHES ARE IN INCHES AND FOR CUSTOMER REFERENCE ONLY.	CHECKED					
5							UNLESS OTHERWISE SPECIFIED, DIMENSIONS ARE IN MILLIMETERS. DIMENSIONS IN INCHES ARE IN INCHES AND FOR CUSTOMER REFERENCE ONLY.	ISSUED					
4	FERRULE	BRASS	NICKEL	1			UNLESS OTHERWISE SPECIFIED, DIMENSIONS ARE IN MILLIMETERS. DIMENSIONS IN INCHES ARE IN INCHES AND FOR CUSTOMER REFERENCE ONLY.	SHEET	1 OF 1				
3	CONTACT PIN	BRASS	GOLD	1			UNLESS OTHERWISE SPECIFIED, DIMENSIONS ARE IN MILLIMETERS. DIMENSIONS IN INCHES ARE IN INCHES AND FOR CUSTOMER REFERENCE ONLY.	PART NO.		TNC CRIMP PLUG			
2	INSULATOR	TEFLON	NATURAL	1			UNLESS OTHERWISE SPECIFIED, DIMENSIONS ARE IN MILLIMETERS. DIMENSIONS IN INCHES ARE IN INCHES AND FOR CUSTOMER REFERENCE ONLY.	PART NO.		(FOR LMR 600 CABLE)			
1	INSULATOR BODY	BRASS	NICKEL	1			UNLESS OTHERWISE SPECIFIED, DIMENSIONS ARE IN MILLIMETERS. DIMENSIONS IN INCHES ARE IN INCHES AND FOR CUSTOMER REFERENCE ONLY.	PART NO.		1222417			
DESCRIPTION		MATERIAL		FINISH		QTY		DO NOT SCALE DRAWING		CAD FILE		C:/122/122417.DWG	
										DWG. NO.		122417.DWG	
										REV.		C	
										SIZE		A	
										SCALE		NA	

Amphenol Connex