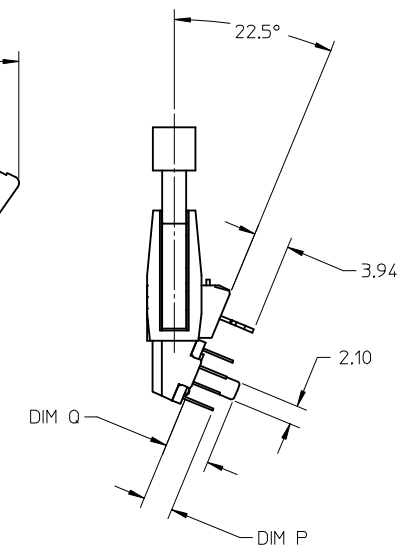
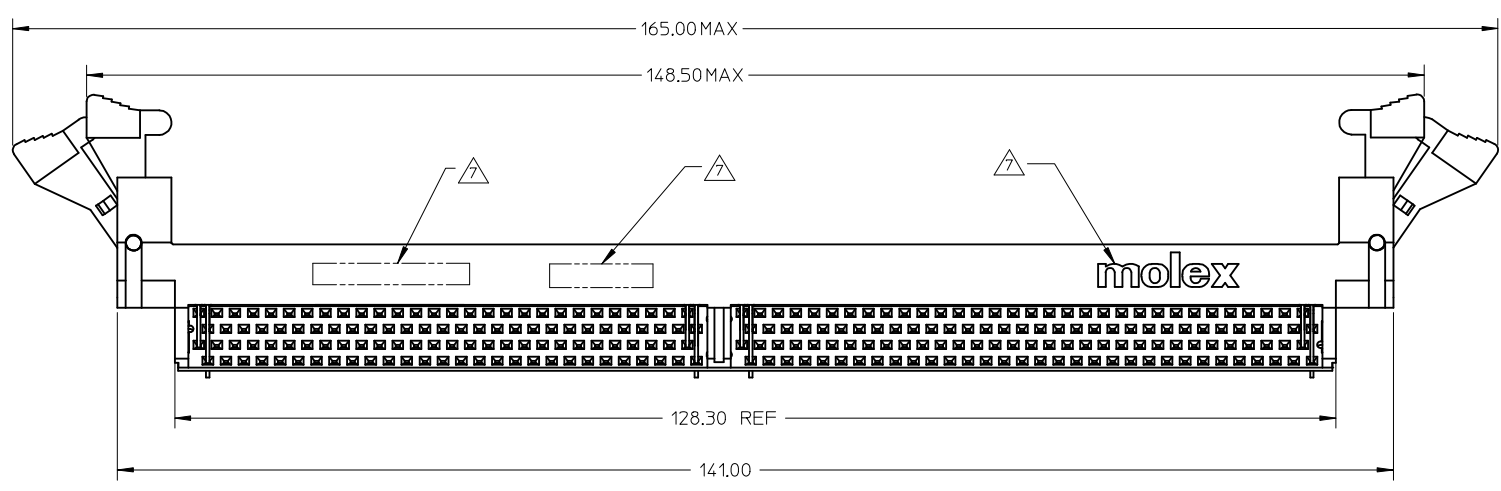
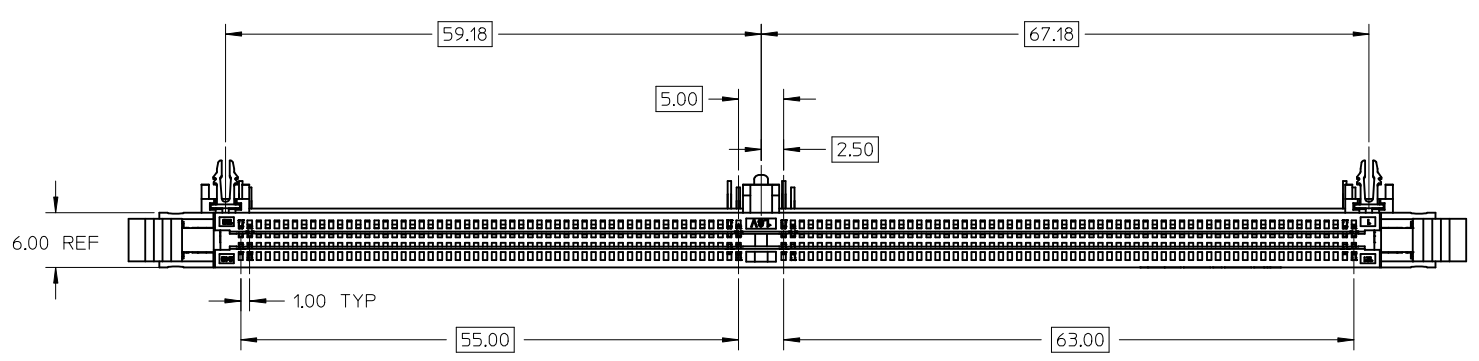


10 9 8 7 6 5 4 3 2 1



- NOTES :
- MATERIALS : HOUSING, BASEPLATE AND LATCH.
- HIGH TEMP THERMOPLASTIC, UL94-0.
TERMINALS & FORKLOCK - COPPER ALLOY.
 - PLATING : CONTACT AREA - SEE TABLE IN SHEET 5.
SOLDERTAIL - SEE TABLE IN SHEET 5.
 - CARD SLOT ACCEPTS 1.27+/-0.10MM MODULE THICKNESS (MEASURED OVER PC PADS).
 - REFER TO PRODUCT SPECIFICATION , PS-87916-001 FOR PERFORMANCE SPECIFICATION.
 - RECOMMENDED MODULE CARD LAYOUT SHALL BE AS PER JEDEC MO-237.
 - PRODUCT SHALL BE PACKED IN TRAY.
- ▲ MOLEX LOGO, DATE CODE & PART NUMBER INDICATED ON HOUSING.

ADDED OPTION
EC NO: S2008-0329
2007/10/24
DRW:NCCTEH
CHKD:TYANG01
2007/10/24
APPR:SHLENI
2007/10/25

QUALITY SYMBOLS
▽=0
◻=0

GENERAL TOLERANCES (UNLESS SPECIFIED)	
	mm INCH
4 PLACES	± --- ± ---
3 PLACES	± --- ± ---
2 PLACES	± 0.25 ± ---
1 PLACE	± --- ± ---
ANGULAR ± 5 °	
DRAFT WHERE APPLICABLE MUST REMAIN WITHIN DIMENSIONS	

DIMENSION STYLE	
MM ONLY	
DRAWN BY	DATE
JTAN	2004/05/11
CHECKED BY	DATE
MLONG	2004/06/11
APPROVED BY	DATE
GGLEE	2004/06/11
MATERIAL NO.	
SEE TABLE	
SIZE	A3

SCALE	DESIGN UNITS	THIRD ANGLE PROJECTION
NTS	METRIC	☉
TITLE		
DDR2 DIMM, 1.00MM PITCH 240 CKTS, 22.5 DEG		
MOLEX MOLEX INCORPORATED		SHEET NO.
DOCUMENT NO. SD-87916-001		1 OF 5
THIS DRAWING CONTAINS INFORMATION THAT IS PROPRIETARY TO MOLEX INCORPORATED AND SHOULD NOT BE USED WITHOUT WRITTEN PERMISSION		

9 8 7 6 5 4 3 2 1

10 9 8 7 6 5 4 3 2 1

F

E

D

C

B

A

F

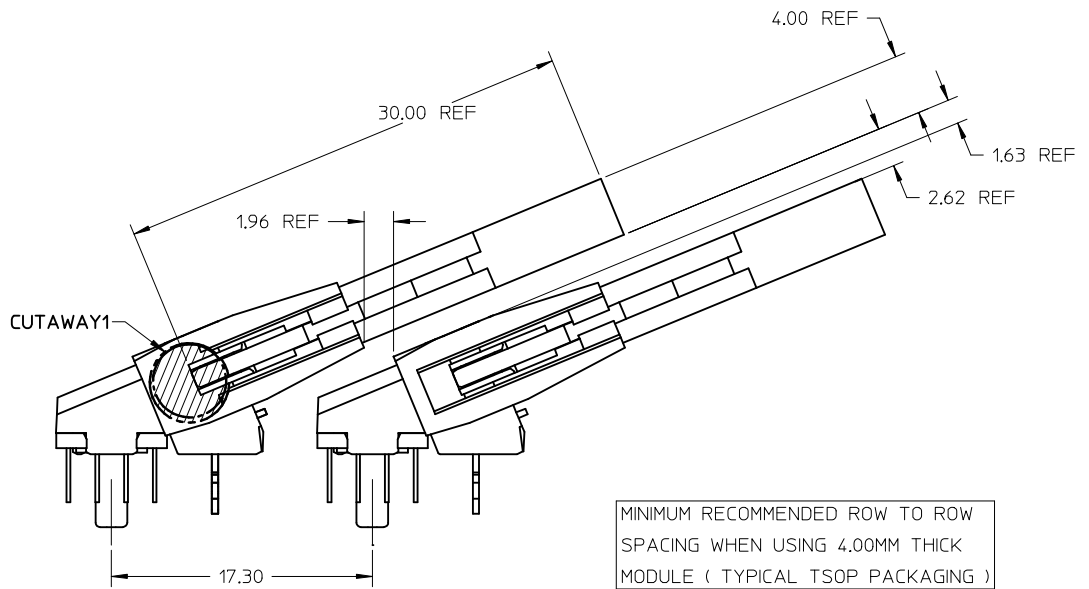
E

D

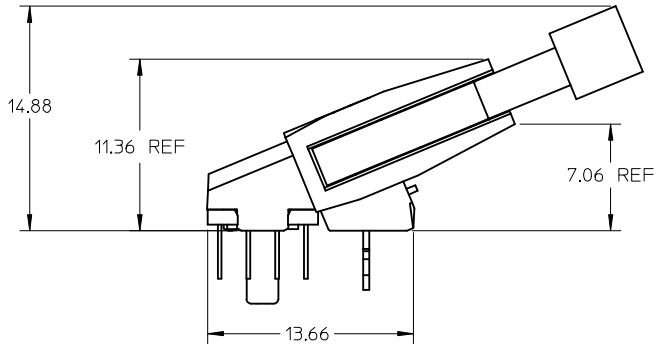
C

B

A

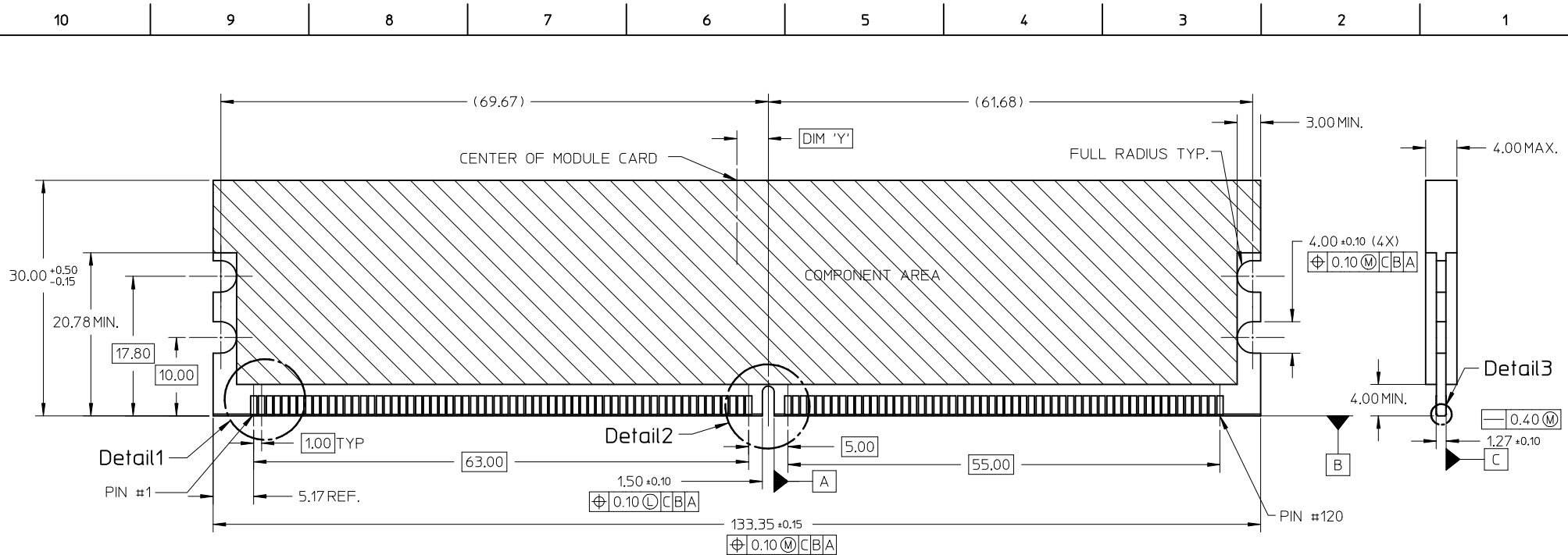


MINIMUM RECOMMENDED ROW TO ROW SPACING WHEN USING 4.00MM THICK MODULE (TYPICAL TSOP PACKAGING)

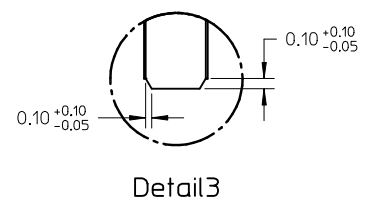
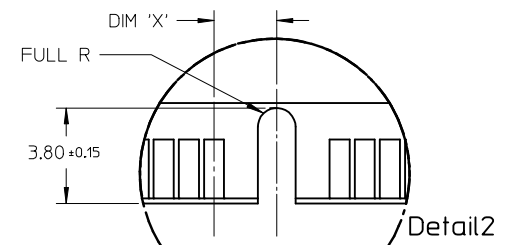
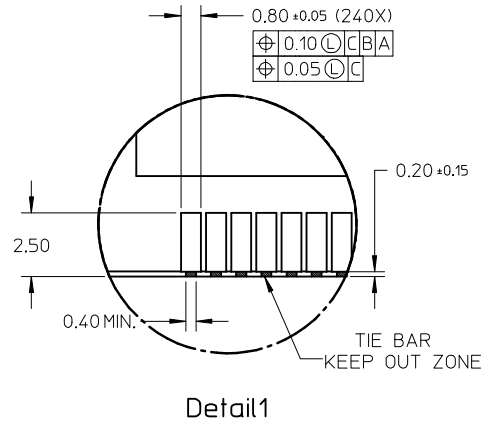


ADDED OPTION EC NO: S2008-0329 DRW/CCTH CH/KD: YIANG01 APPR: SHLENI	2007/10/24 2007/10/24 2007/10/25	QUALITY SYMBOLS ▽=0 ◻=0	GENERAL TOLERANCES (UNLESS SPECIFIED)		DIMENSION STYLE MM ONLY		SCALE NTS	DESIGN UNITS METRIC	THIRD ANGLE PROJECTION		
			4 PLACES ± --- ± --- 3 PLACES ± --- ± --- 2 PLACES ± 0.25 ± --- 1 PLACE ± --- ± ---	mm INCH	DRAWN BY JTAN	DATE 2004/05/11	TITLE DDR2 DIMM, 1.00MM PITCH 240 CKTS, 22.5 DEG				
			ANGULAR ± 5 °		CHECKED BY MLONG	DATE 2004/06/11	MOLEX INCORPORATED				
			DRAFT WHERE APPLICABLE MUST REMAIN WITHIN DIMENSIONS		APPROVED BY GGLEE	DATE 2004/06/11	MATERIAL NO. SEE TABLE	DOCUMENT NO. SD-87916-001	SHEET NO. 2 OF 5		

9 8 7 6 5 4 3 2 1



RECOMMENDED MODULE LAYOUT



KEY LOCATION	VOLTAGE	DIM 'X'	DIM 'Y'
CENTER	1.8V	2.50	4.00

ADDED OPTION	2007/10/24
EC NO: S2008-0329	2007/10/24
DRWNCCTEH	2007/10/24
CHKD: YIYANG01	2007/10/24
APPR: SHLENI	2007/10/25

REV	DESCRIPTION
A1	

QUALITY SYMBOLS	▽=0	
	⊕=0	
GENERAL TOLERANCES (UNLESS SPECIFIED)		
	mm	INCH
4 PLACES	± 0.10	± 0.004
3 PLACES	± 0.15	± 0.006
2 PLACES	± 0.25	± 0.010
1 PLACE	± 0.50	± 0.020
ANGULAR ± 5 °		
DRAFT WHERE APPLICABLE MUST REMAIN WITHIN DIMENSIONS		

DIMENSION STYLE		SCALE	DESIGN UNITS	THIRD ANGLE PROJECTION
MM ONLY		NTS	METRIC	⊙
DRAWN BY	DATE	TITLE		
JTAN	2004/05/11	DDR2 DIMM, 100MM PITCH		
CHECKED BY	DATE	240 CKTS, 22.5 DEG		
MLONG	2004/06/11	MOLEX INCORPORATED		
APPROVED BY	DATE	DOCUMENT NO.		
GGLEE	2004/06/11	SD-87916-001		
MATERIAL NO.		SHEET NO.		
SEE TABLE		3 OF 5		

DRAWN BY		DATE	TITLE	
JTAN		2004/05/11	DDR2 DIMM, 100MM PITCH	
CHECKED BY		DATE	240 CKTS, 22.5 DEG	
MLONG		2004/06/11	MOLEX INCORPORATED	
APPROVED BY		DATE	DOCUMENT NO.	
GGLEE		2004/06/11	SD-87916-001	
MATERIAL NO.		SHEET NO.		
SEE TABLE		3 OF 5		

PART NO.	VOLTAGE KEY	DIM 'P'	DIM 'Q'	RECOMMENDED PCB THICKNESS	CONTACT AREA PLATING	SOLDERTAIL PLATING
87916-0001	1.8V	2.79	3.18	1.57	0.76µM/ 30µ" GOLD OVER 1.27µM/ 50µ" MIN NICKEL	2.54µM/ 100µ" MIN. TIN OVER 1.27µM/ 50µ" MIN NICKEL
87916-0011		3.18	4.83	2.36		
87916-0111		4.00		3.20		

ADDED OPTION EC NO: S2008-0329 2007/10/24 DRW: CCTEH 2007/10/24 CHKD: TYANG01 2007/10/24 APPR: SILENI 2007/10/25	DESCRIPTION REV	QUALITY SYMBOLS ▽=0 □=0	GENERAL TOLERANCES (UNLESS SPECIFIED)		DIMENSION STYLE MM ONLY		SCALE NTS	DESIGN UNITS METRIC	THIRD ANGLE PROJECTION	
			4 PLACES ± --- ± --- 3 PLACES ± --- ± --- 2 PLACES ± 0.25 ± --- 1 PLACE ± --- ± ---	mm INCH ± --- ± --- ± 0.25 ± --- ± --- ± ---	DRAWN BY JTAN	DATE 2004/05/11	TITLE DDR2 DIMM, 1.00MM PITCH 240 CKTS, 22.5 DEG			
			ANGULAR ± 5 °	CHECKED BY MLONG	DATE 2004/06/11	MOLEX INCORPORATED				
		DRAFT WHERE APPLICABLE MUST REMAIN WITHIN DIMENSIONS	MATERIAL NO. SEE TABLE	APPROVED BY GGLEE	DATE 2004/06/11	DOCUMENT NO. SD-87916-001	SHEET NO. 5 OF 5			