

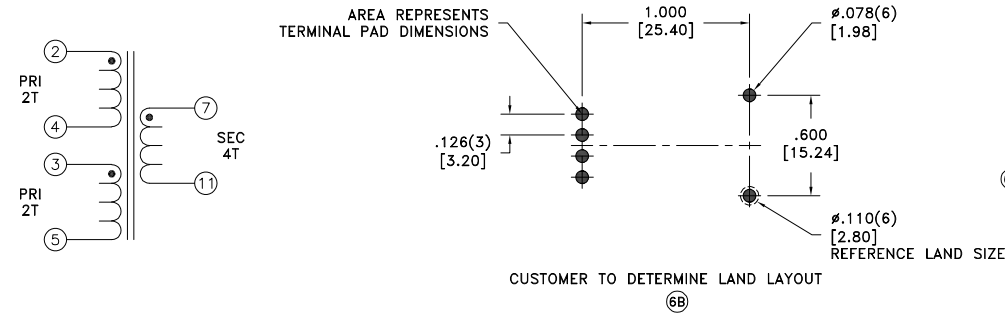
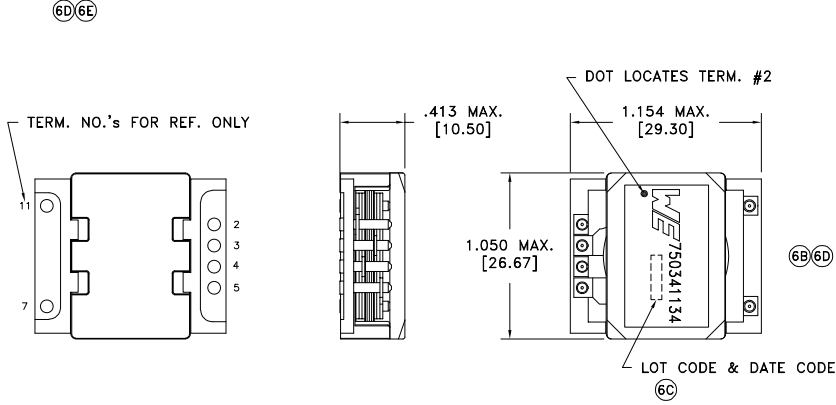
|                   |      |               |
|-------------------|------|---------------|
| CUSTOMER TERMINAL | RoHS | LEAD(Pb)-FREE |
| Sn100%            | Yes  | Yes           |

more than you expect



**ELECTRICAL SPECIFICATIONS @ 25°C unless otherwise noted:**

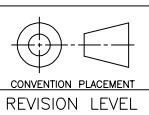
| PARAMETER          | TEST CONDITIONS                         | VALUE          |
|--------------------|---|----------------|
| D.C. RESISTANCE    | 2-4 @20°C                               | 1.5 mOhms max. |
| D.C. RESISTANCE    | 3-5 @20°C                               | 1.5 mOhms max. |
| D.C. RESISTANCE    | 7-11 @20°C                              | 3.5 mOhms max. |
| ⑥D INDUCTANCE      | 2-5 tie(3+4), 100kHz, 100mVAC, Ls       | 65.0uH min.    |
| LEAKAGE INDUCTANCE | 2-5 tie(3+4, 7+11), 100kHz, 100mVAC, Ls | 150nH max.     |
| ⑥D DIELECTRIC      | 2-7 tie(3+4), 2250VDC, 1 second         | -              |
| URNS RATIO         | (7-11):(2-4)                            | 2:1, ±1%       |
| URNS RATIO         | (7-11):(3-5)                            | 2:1, ±1%       |



**GENERAL SPECIFICATIONS:**  
 OPERATING TEMPERATURE RANGE: -40°C to +125°C including temp rise.

⑥F VOLTAGE-TIME: 80VuS

| REV. | DATE  | Packaging Specifications              |
|------|-------|---------------------------------------|
| 6F   | 2/22  | Method: Tape & Reel                   |
| 6E   | 4/20  | PKG-0793                              |
| 6D   | 5/14  | www.we-online.com/midcom              |
| 6C   | 11/12 | SEE REVISION SHEET FOR REVISION LEVEL |



Tolerances unless otherwise specified:  
 Angles: ±1°  
 Decimals: ±.005 [.13]  
 Fractions: ±1/64 Footprint: ±.005 [.13]

This drawing is dual dimensioned. Dimensions in brackets are in millimeters.

DRAWING TITLE  
**TRANSFORMER**

eiSos p/n: 750341134



PART NO.  
**750341134**

SPECIFICATION SHEET 1 OF 1