



All dimensions in mm

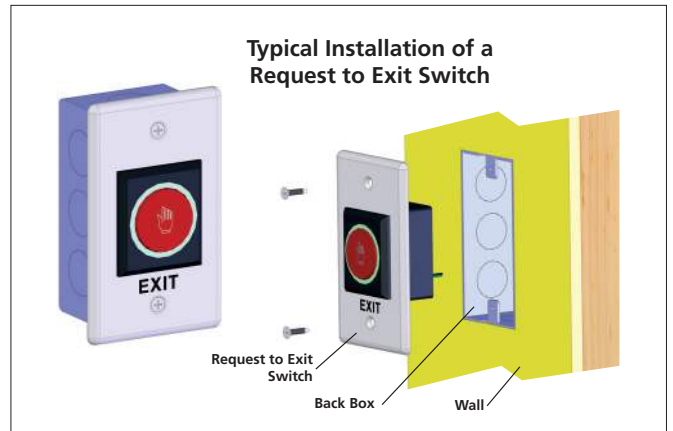
- Provides an easy means of exit through a normally locked door
- Touch-free technology
- 12 VDC
- 2 Year limited warranty
- Designed to meet FCC and CE requirements
- Illuminated for easy visual location
- Colour change to indicate activation

Request to Exit Switch (Illuminated)

Specified for use with all Storm AXS access control systems this touch-free technology 'request to exit' switch allows personnel to leave a secured area by simply waving their hand across an illuminated sensor.

This device is designed to be easily installed to a flush mounted, standard US format, electrical back box.

This REX switch provides a fast and convenient lock release for a defined (timed) duration. The active switch is surrounded by an illuminated annular ring that changes colour when the switch is activated. Intended for location at the secured side of any access controlled door.



Specified for use with Storm AXS Access Control Solutions

- Storm-AXS StrikeMaster keypads
- Storm-AXS Power supply
- Storm-AXS Electro-magnetic door locks
- Storm-AXS Emergency override switch (break glass)

Part Numbers

- DR2KW20, DR2KT20, DE1KT10
- DEPS030
- DEL600, DEL1200, DEG1200
- DEEM010



Whilst every effort is made to ensure details are correct at time of print, specifications are subject to change without notice.

Designed & produced by NIK Design nik@nikdesign.co.uk

For more information & to order: www.storm-interface.com

Storm Interface products include technology protected by international patents and design registration. All rights reserved.



Storm is a trademark of Keymat Technology Ltd
Storm Interface is a trading name of Keymat Technology Ltd

DEEX010 July 2014



FM 39602

