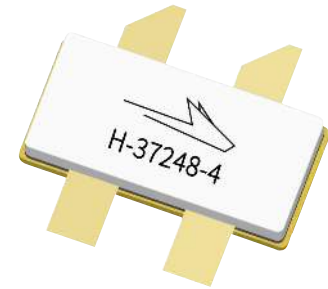


# GTVA263202FC

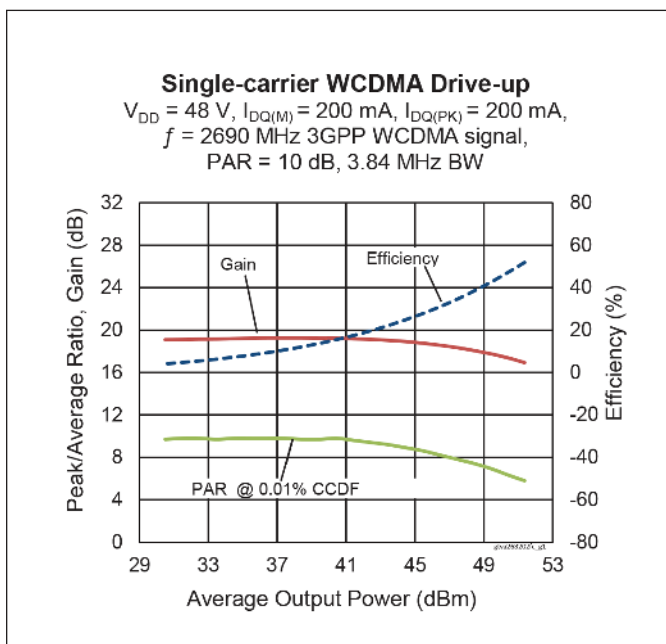
Thermally-Enhanced High Power RF GaN on SiC HEMT  
340 W, 48 V, 2620 – 2690 MHz



Package Types: H-37248-4

## Description

The GTVA263202FC is a 340-watt ( $P_{3dB}$ ) GaN on SiC high electron mobility transistor (HEMT) for use in multi-standard cellular power amplifier applications. It features input matching, high efficiency, and a thermally-enhanced surface-mount package with earless flange.



## Features

- GaN on SiC HEMT technology
- Input matched
- Typical pulsed CW performance, 2690 MHz, 48 V, combined outputs
  - Output power at  $P_{3dB} = 340\text{ W}$
  - Drain efficiency = 70%
  - Gain = 16 dB
- Capable of handling 10:1 VSWR @48 V, 80 W (CW) output power
- Human Body Model Class 1B (per ANSI/ESDA/ JEDEC JS-001)
- Low thermal resistance
- Pb-free and RoHS compliant

## RF Characteristics

### Single-carrier WCDMA Specifications (tested in WolfSpeed production test fixture)

$V_{DD} = 48\text{ V}$ ,  $I_{DQ} = 200\text{ mA}$  (per side),  $P_{OUT} = 80\text{ W}$  avg,  $f = 2690\text{ MHz}$ , 3GPP signal, channel bandwidth = 3.84 MHz, peak/average = 10 dB @ 0.01% CCDF

Characteristic	Symbol	Min.	Typ.	Max.	Unit
Gain	$G_{ps}$	16	17	—	dB
Drain Efficiency	$\eta_D$	34	40	—	%
Adjacent Channel Power Ratio	ACPR	—	-29	-26.5	dBc

Note:

All published data at  $T_{CASE} = 25^\circ\text{C}$  unless otherwise indicated

ESD: Electrostatic discharge sensitive device—observe handling precautions!





## DC Characteristics

Characteristic	Symbol	Min.	Typ.	Max.	Unit	Conditions
Drain-source Breakdown Voltage	$V_{BR(DSS)}$	150	—	—	V	$V_{GS} = -8\text{ V}, I_D = 21\text{ mA}$
Drain-source Leakage Current	$I_{DSS}$	—	—	5	mA	$V_{GS} = -8\text{ V}, V_{DS} = 10\text{ V}$
Gate Threshold Voltage	$V_{GS(th)}$	-3.8	-3.0	-2.3	V	$V_{DS} = 10\text{ V}, I_D = 21\text{ mA}$

## Recommended Operating Conditions

Parameter	Symbol	Min.	Typ.	Max.	Unit	Conditions
Drain Operating Voltage	$V_{DD}$	0	—	50	V	$V_{DS} = 50\text{ V}, I_D = 200\text{ mA}$
Gate Quiescent Voltage	$V_{GS(Q)}$	—	-2.8	—		

## Absolute Maximum Ratings

Parameter	Symbol	Value	Unit
Drain-source Voltage	$V_{DSS}$	125	V
Gate-source Voltage	$V_{GS}$	-10 to +2	
Gate Current	$I_G$	20	mA
Drain Current	$I_D$	7.5	A
Junction Temperature	$T_J$	225	°C
Storage Temperature Range	$T_{STG}$	-65 to +150	

Operation above the maximum values listed here may cause permanent damage. Maximum ratings are absolute ratings; exceeding only one of these values may cause irreversible damage to the component. Exposure to absolute maximum rating conditions for extended periods may affect device reliability. For reliable continuous operation, the device should be operated within the operating voltage range ( $V_{DD}$ ) specified above.

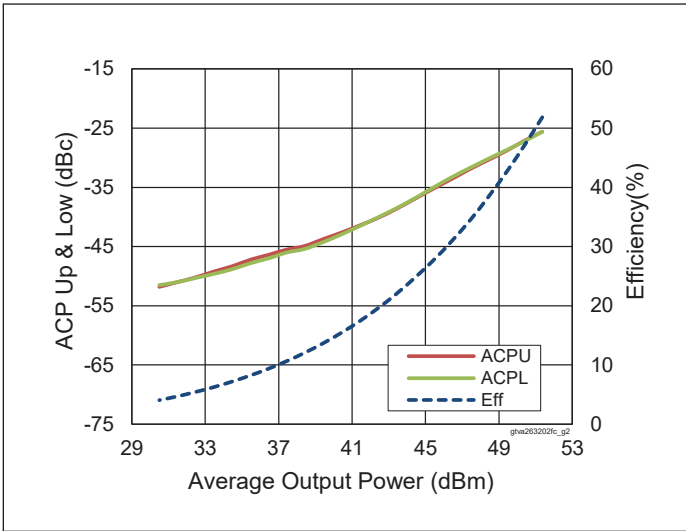
## Thermal Characteristics

Characteristic	Symbol	Value	Unit	Conditions
Thermal Resistance	$R_{\theta JC}$	0.5	°C/W	$T_{CASE} = 70\text{ °C}, 80\text{ W (CW)}$

## Ordering Information

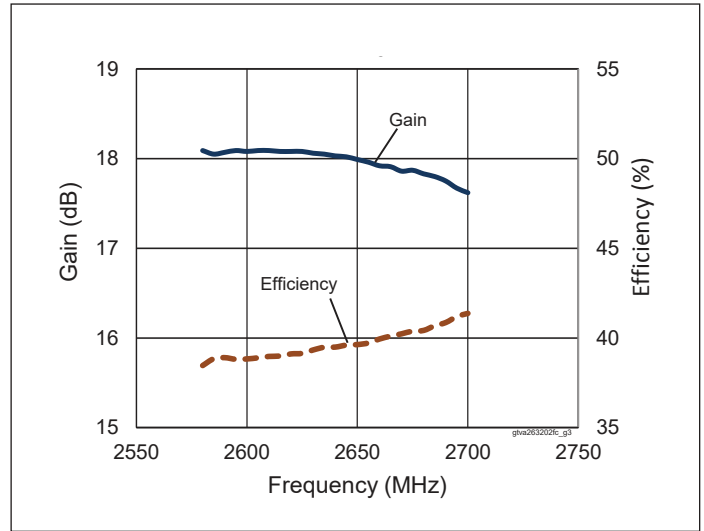
Type and Version	Order Code	Package Description	Shipping
GTVA263202FC V1 R0	GTVA263202FC-V1-R0	H-37248-4, earless flange	Tape & Reel, 50 pcs
GTVA263202FC V1 R2	GTVA263202FC-V1-R2	H-37248-4, earless flange	Tape & Reel, 250 pcs

**Typical Performance** (data taken in a production test fixture)



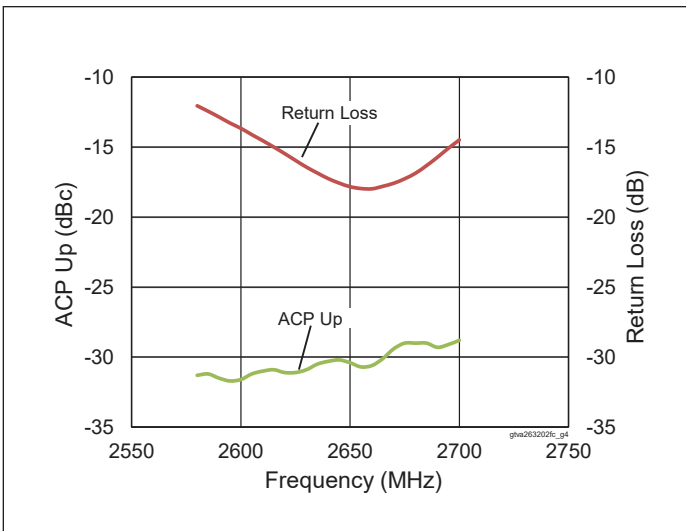
**Figure 1.** Single-carrier WCDMA Drive-up

$V_{DD} = 48\text{ V}$ ,  $I_{DQ(M)} = 200\text{ mA}$ ,  $I_{DQ(PK)} = 200\text{ mA}$ ,  
 $f = 2690\text{ MHz}$ , 3GPP WCDMA signal,  
 $PAR = 10\text{ dB}$ ,  $BW = 3.84\text{ MHz}$



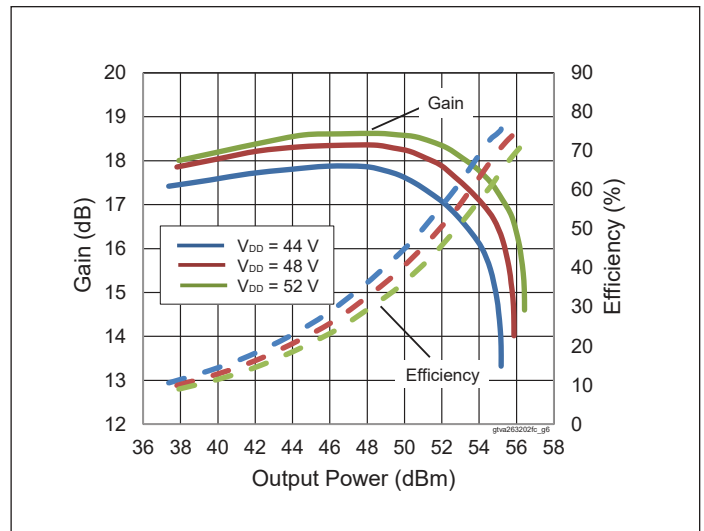
**Figure 2.** Single-carrier WCDMA Broadband Performance

$V_{DD} = 48\text{ V}$ ,  $I_{DQ(M)} = 200\text{ mA}$ ,  $I_{DQ(PK)} = 200\text{ mA}$ ,  
 $P_{OUT} = 49.03\text{ dBm}$ , 3GPP WCDMA signal,  
 $PAR = 10\text{ dB}$



**Figure 3.** Single-carrier WCDMA Broadband Performance

$V_{DD} = 48\text{ V}$ ,  $I_{DQ(M)} = 200\text{ mA}$ ,  $I_{DQ(PK)} = 200\text{ mA}$ ,  
 $P_{OUT} = 49.03\text{ dBm}$ , 3GPP WCDMA signal,  
 $PAR = 10\text{ dB}$

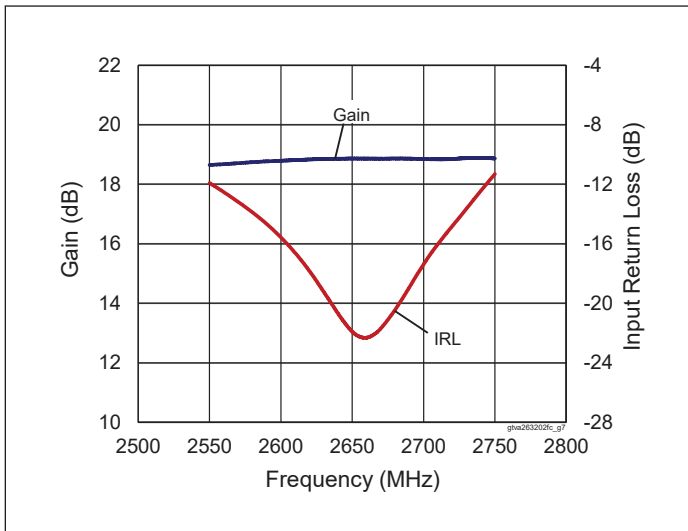


**Figure 4.** CW Performance at Various  $V_{DD}$

$I_{DQ(M)} = 200\text{ mA}$ ,  $I_{DQ(PK)} = 200\text{ mA}$ ,  $f = 2690\text{ MHz}$



**Typical Performance** (cont.)



**Figure 5.** Small Signal CW Gain & Input Return Loss

$V_{DD} = 48\text{ V}$ ,  $I_{DQ(M)} = 200\text{ mA}$ ,  $I_{DQ(PK)} = 200\text{ mA}$

**Load Pull Performance**

**Load Pull Performance (per side)** – Pulsed CW signal: 10  $\mu\text{s}$ , 10% duty cycle, 48 V,  $I_{DQ} = 200\text{ mA}$

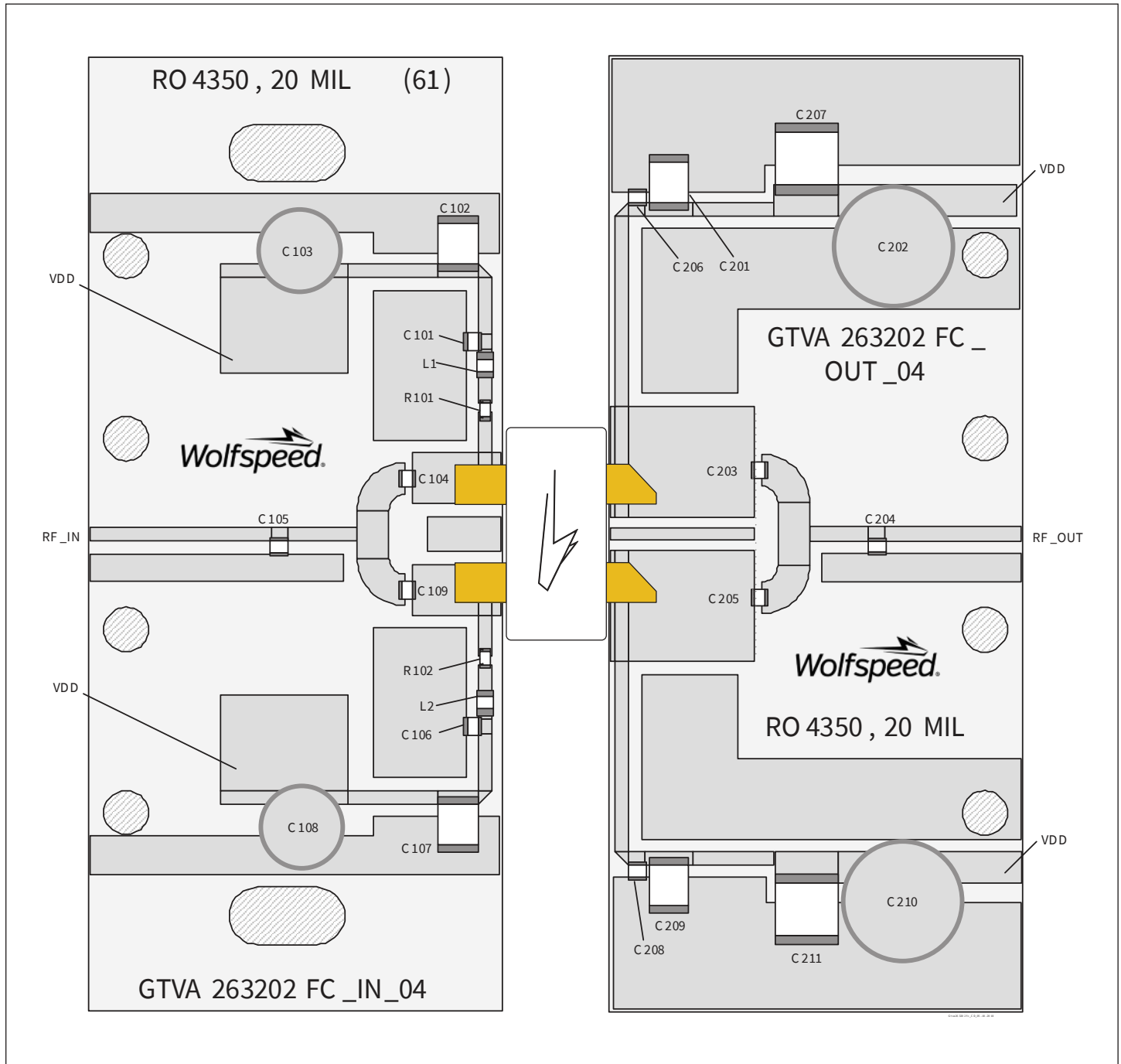
		$P_{3dB}$									
		Max Output Power					Max PAE				
Freq [MHz]	$Z_S [\Omega]$	$Z_L [\Omega]$	Gain [dB]	$P_{OUT} [\text{dBm}]$	$P_{OUT} [\text{W}]$	PAE [%]	$Z_L [\Omega]$	Gain [dB]	$P_{OUT} [\text{dBm}]$	$P_{OUT} [\text{W}]$	PAE [%]
2620	8.5 - j7	2.45 - j3.5	14.95	53.75	237	65.9	2.0 - j1.1	16.36	51.13	130	77.3
2655	8.9 - j8.5	2.96 - j3.6	14.67	53.77	238	67.7	2.43 - j1.8	15.88	52.39	173	77.2
2690	9.7 - j9.7	3.0 - j3.86	14.5	53.75	237	68.2	2.17 - j1.9	15.84	52.02	159	77.6



**Evaluation Board, 2620 – 2690 MHz**

Evaluation Board Part Number	LTN/GTVA263202FC-V1
PCB Information	Rogers 4350, 0.508 mm [0.020"] thick, 2 oz. copper, $\epsilon_r = 3.66$ , $f = 2620 - 2690$ MHz

Find Gerber files for this test fixture on the Wolfspeed Web site at [www.wolfspeed.com/RF](http://www.wolfspeed.com/RF)



Reference circuit assembly diagram (not to scale)



## Components Information

Component	Description	Manufacturer	P/N
<b>Input</b>			
C101, C104, C106, C109	Capacitor, 10 pF	ATC	ATC800A100JT250T
C102, C107	Capacitor, 1 $\mu$ F	TDK Corporation	C4532X7R2A105M230KA
C103, C108	Capacitor, 10 $\mu$ F	Panasonic Electronic Components	EEE-HB1H100AP
C105	Capacitor, 1 pF	ATC	ATC800A1R0CT250T
L1, L2	Inductor, 12 nH	Coilcraft	0908SQ-12NGLB
R101, R102	Resistor, 5.6 ohms	Panasonic Electronic Components	ERJ-3GEYJ5R6V
<b>Output</b>			
C201, C209	Capacitor, 1 $\mu$ F	TDK Corporation	C4532X7R2A105M230KA
C202, C210	Capacitor, 220 $\mu$ F	Panasonic Electronic Components	ECA-2AHG221
C203, C205, C206, C208	Capacitor, 10 pF	ATC	ATC800A100JT250T
C204	Capacitor, 1.4 pF	ATC	ATC800A1R4CT250T
C207, C211	Capacitor, 10 $\mu$ F	TDK Corporation	C5750X7S2A106M230KB

## Bias Sequencing

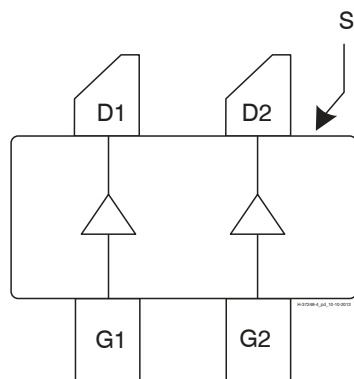
### Bias On

1. Ensure RF is turned off
2. Apply pinch-off voltage of  $-5$  V to the gate
3. Apply nominal drain voltage
4. Bias gate to desired quiescent drain current
5. Apply RF

### Bias Off

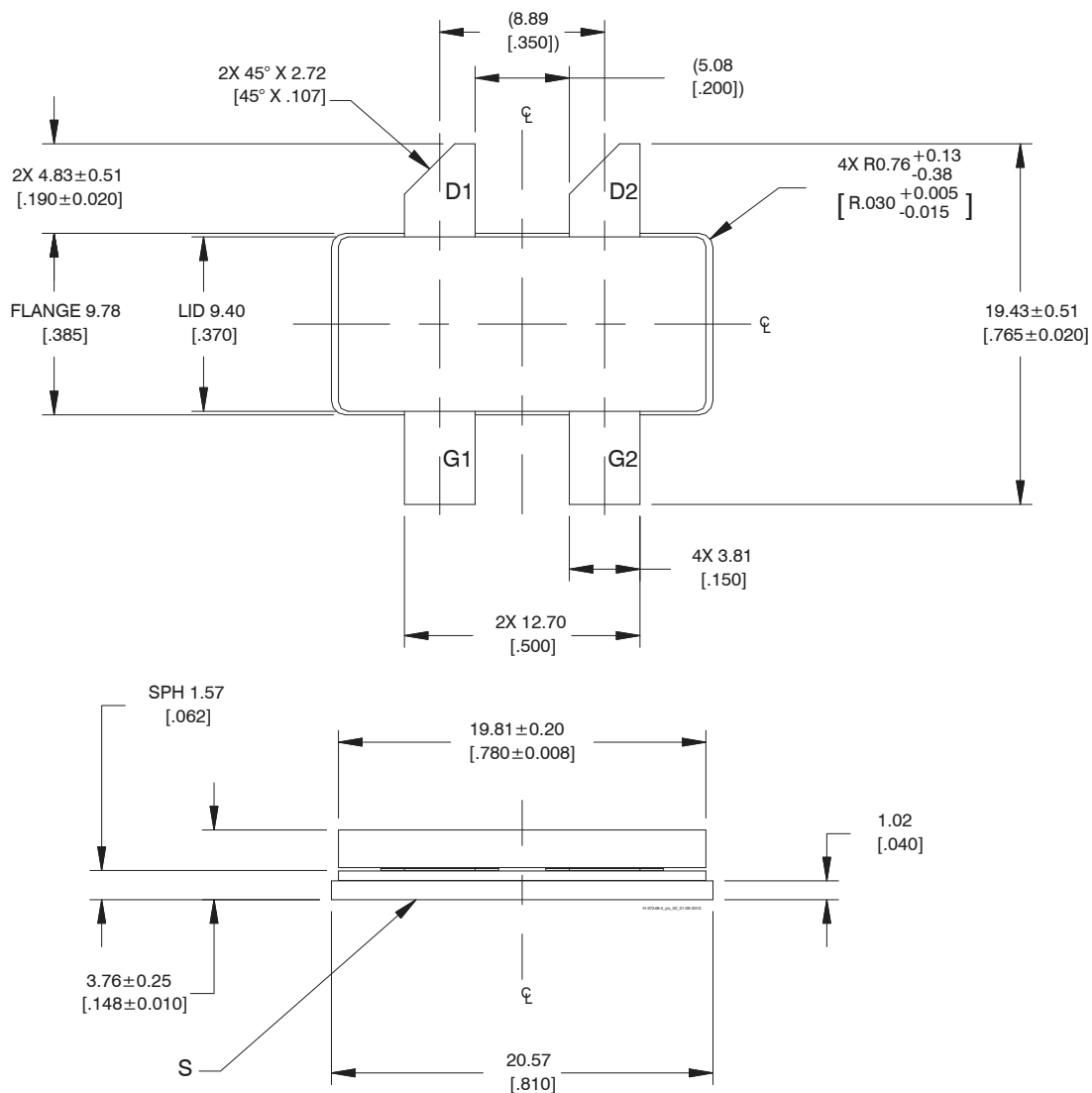
1. Turn RF off
2. Apply pinch-off voltage to the gate
3. Turn-off drain voltage
4. Turn-off gate voltage

## Pinout Diagram (top view)



Pin	Description
D1	Drain device 1
D2	Drain device 2
G1	Gate device 1
G2	Gate device 2
S	Source (flange)

## Package Outline Specifications – Package H-37248-4



### Diagram Notes—unless otherwise specified:

1. Interpret dimensions and tolerances per ASME Y14.5M-1994.
2. Primary dimensions are mm. Alternate dimensions are inches.
3. All tolerances  $\pm 0.127$  [.005] unless specified otherwise.
4. Pins: D1, D2 – drains; G1, G2 – gates; S – source.
5. Lead thickness:  $0.10 + 0.076/-0.025$  mm [ $0.004+0.003/-0.001$  inch].
6. Gold plating thickness:  $1.14 \pm 0.38$  micron [ $45 \pm 15$  microinch].

**For more information, please contact:**

4600 Silicon Drive  
Durham, NC 27703 USA  
Tel: +1.919.313.5300  
[www.wolfspeed.com/RF](http://www.wolfspeed.com/RF)

Sales Contact  
[RFSales@wolfspeed.com](mailto:RFSales@wolfspeed.com)

RF Product Marketing Contact  
[RFMarketing@wolfspeed.com](mailto:RFMarketing@wolfspeed.com)

## Notes & Disclaimer

---

Specifications are subject to change without notice. “Typical” parameters are the average values expected by Wolfspeed in large quantities and are provided for information purposes only. Wolfspeed products are not warranted or authorized for use as critical components in medical, life-saving, or life-sustaining applications, or other applications where a failure would reasonably be expected to cause severe personal injury or death. No responsibility is assumed by Wolfspeed for any infringement of patents or other rights of third parties which may result from use of the information contained herein. No license is granted by implication or otherwise under any patent or patent rights of Wolfspeed.

© 2022 Wolfspeed, Inc. All rights reserved. Wolfspeed® and the Wolfstreak logo are registered trademarks and the Wolfspeed logo is a trademark of Wolfspeed, Inc.  
PATENT: <https://www.wolfspeed.com/legal/patents>

*The information in this document is subject to change without notice.*