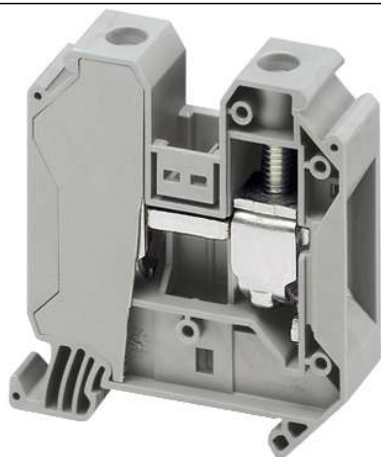


NSYTRV352

SCREW TERMINAL, FEED THROUGH, 2 POINTS, 35MM² , GREY



Main

| | |
|---------------------------|--|
| Range | Linergy |
| Product name | Linergy TR |
| Product or Component Type | Terminal block |
| Device short name | TRV |
| Terminal block type | Passthrough |
| Terminal block level | 1 |
| Mounting Mode | Clip-on |
| Nominal cross section | 0.05 in ² (35 mm ²) |
| Length | 2.37 in (60.2 mm) |
| Color | Gray |
| Quantity per Set | Set of 50 |

Complementary

| | |
|--------------------------------|---|
| Width | 0.63 in (16 mm) |
| Height | 2.59 in (65.7 mm) |
| Connections - terminals | 1 x screw terminal upstream 1 x screw terminal downstream |
| Number of connections | 2 |
| Connection position | Sideways |
| Number of measurement input | 2 |
| Cable cross section | 0.00...0.08 In ² (1.5...50 mm ²), flexible without cable end 0.00...0.08 in ² (1.5...50 mm ²), solid |
| Tightening torque | 28.32...32.75 lbf.in (3.2...3.7 N.m) |
| Wire stripping length | 0.71 in (18 mm) |
| Tool type | Connection screwdriver Disconnection screwdriver |
| [Ue] rated operational voltage | 1000 V EN/IEC 60947-7-1 600 V CSA 690 V ATEX Exe II Ex II 2 GD 600 V cURus |
| Line Rated Current | 125 A EN/IEC 60947-7-1 150 A cURus 150 A CSA 126 A ATEX Exe II Ex II 2 GD |
| Material | Polyamide 6/6 insulating case |
| Dielectric loss | 0.01 at 1 MHz IEC 60250 0.01 at 1 MHz VDE 0303-T4 |
| Dielectric constant | 3.7 at 1 MHz |
| Resistivity | 10000 MΩ.M IEC 60093 10000 MΩ.m VDE 0303-T30 |
| Surface resistance | 1000 GΩ IEC 60093 1000 GΩ VDE 0303-T30 |
| Creep resistance | 500 CTI (> 400 kV) IEC 60093 500 CTI (> 400 kV) VDE 0303-T30 |
| Flame retardance | V0 0.03 in (0.8 mm) UL 94 |
| Net Weight | 2.15 oz (61 g) |

The information provided in this documentation contains general descriptions and/or technical characteristics of the performance of the products contained herein. This documentation is not intended as a substitute for and is not to be used for determining suitability or reliability of these products for specific user applications. It is the duty of any such user or integrator to perform the appropriate and complete risk analysis, evaluation and testing of the products with respect to the relevant specific application or use thereof. Neither Schneider Electric Industries SAS nor any of its affiliates or subsidiaries shall be responsible or liable for misuse of the information contained herein.

| | |
|-----------------------|--|
| Range compatibility | Prisma G Prisma P Prisma PH Prisma Pack Spacial Kaedra Pragma TeSys |
| Product Compatibility | Spacial enclosures |

Environment

| | |
|---------------------------------------|---|
| Product Certifications | ATEX IEC-Ex VDE EAC GL CSA cURus |
| Dielectric strength | 1000 V IEC 60243-1 |
| Ambient air temperature for operation | -40...266 °F (-40...130 °C) IEC 60216-1 -40...266 °F (-40...130 °C) VDE 0304-T21 |





Ordering and shipping details

| | |
|-----------------------|---|
| Category | 21715-IEC TERMINAL BLOCKS-NSY,AM1,DF6,GK1 |
| Discount Schedule | CP5 |
| GTIN | 3606480532153 |
| Nbr. of units in pkg. | 1 |
| Package weight(Lbs) | 2.01 oz (57.0 g) |
| Returnability | Yes |
| Country of origin | TR |

Packing Units

| | |
|------------------------------|---------------------------|
| Unit Type of Package 1 | PCE |
| Package 1 Height | 3.78 in (9.6 cm) |
| Package 1 width | 6.97 in (17.7 cm) |
| Package 1 Length | 11.02 in (28 cm) |
| Unit Type of Package 2 | P06 |
| Number of Units in Package 2 | 2000 |
| Package 2 Weight | 294.80 lb(US) (133.72 kg) |
| Package 2 Height | 28.94 in (73.5 cm) |
| Package 2 width | 31.50 in (80 cm) |
| Package 2 Length | 23.62 in (60 cm) |
| Unit Type of Package 3 | BB1 |
| Number of Units in Package 3 | 50 |
| Package 3 Weight | 6.59 lb(US) (2.991 kg) |
| Package 3 Height | 3.78 in (9.6 cm) |
| Package 3 width | 6.97 in (17.7 cm) |
| Package 3 Length | 11.02 in (28 cm) |

Offer Sustainability

| | |
|----------------------------|---|
| Sustainable offer status | Green Premium product |
| REACH Regulation |  REACH Declaration |
| REACH free of SVHC | Yes |
| EU RoHS Directive | Compliant  EU RoHS Declaration |
| Toxic heavy metal free | Yes |
| Mercury free | Yes |
| RoHS exemption information |  Yes |
| China RoHS Regulation |  China RoHS Declaration |

| | |
|-----------------------------|--|
| Environmental Disclosure | Product Environmental Profile |
| WEEE | The product must be disposed on European Union markets following specific waste collection and never end up in rubbish bins. |
| Halogen content performance | Halogen free plastic parts product |

Contractual warranty

| | |
|----------|-----------|
| Warranty | 18 months |
|----------|-----------|
