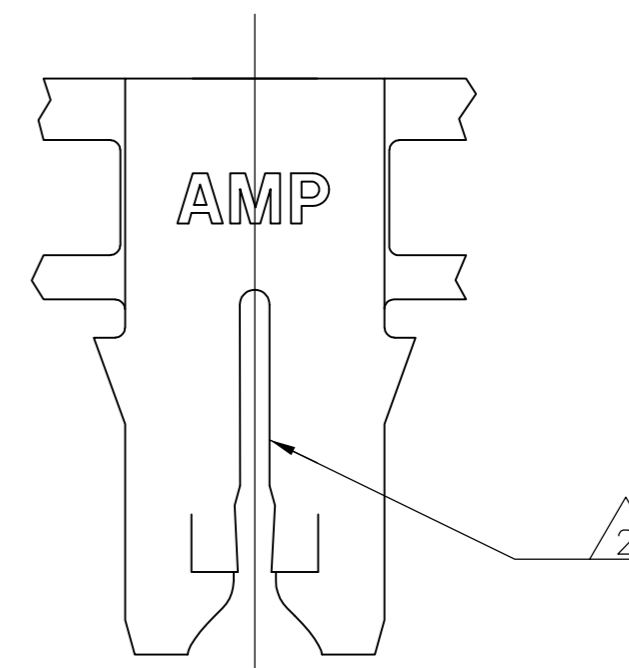
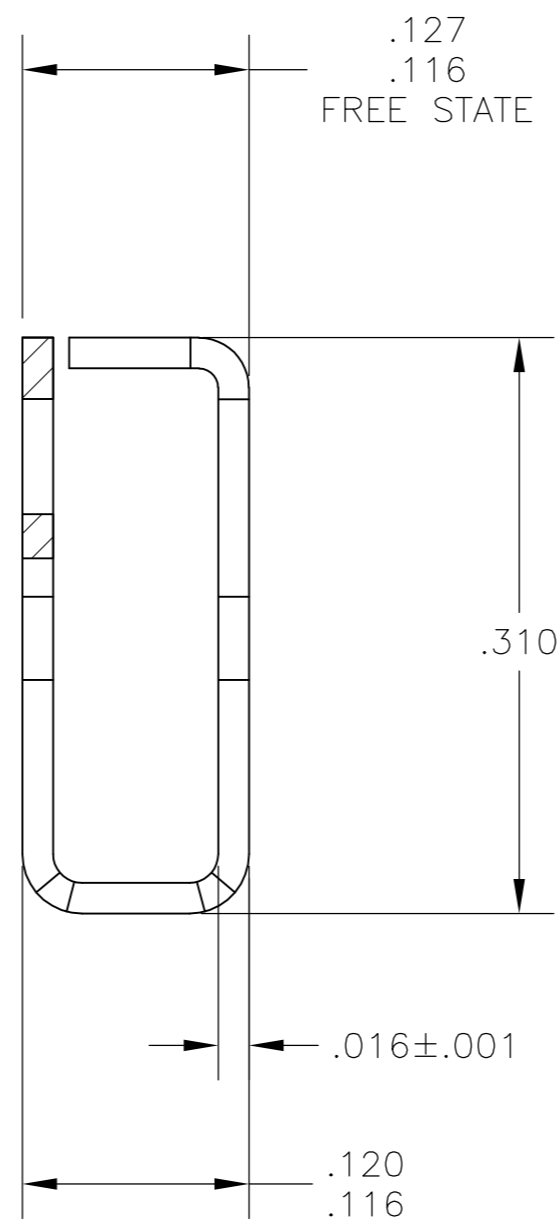
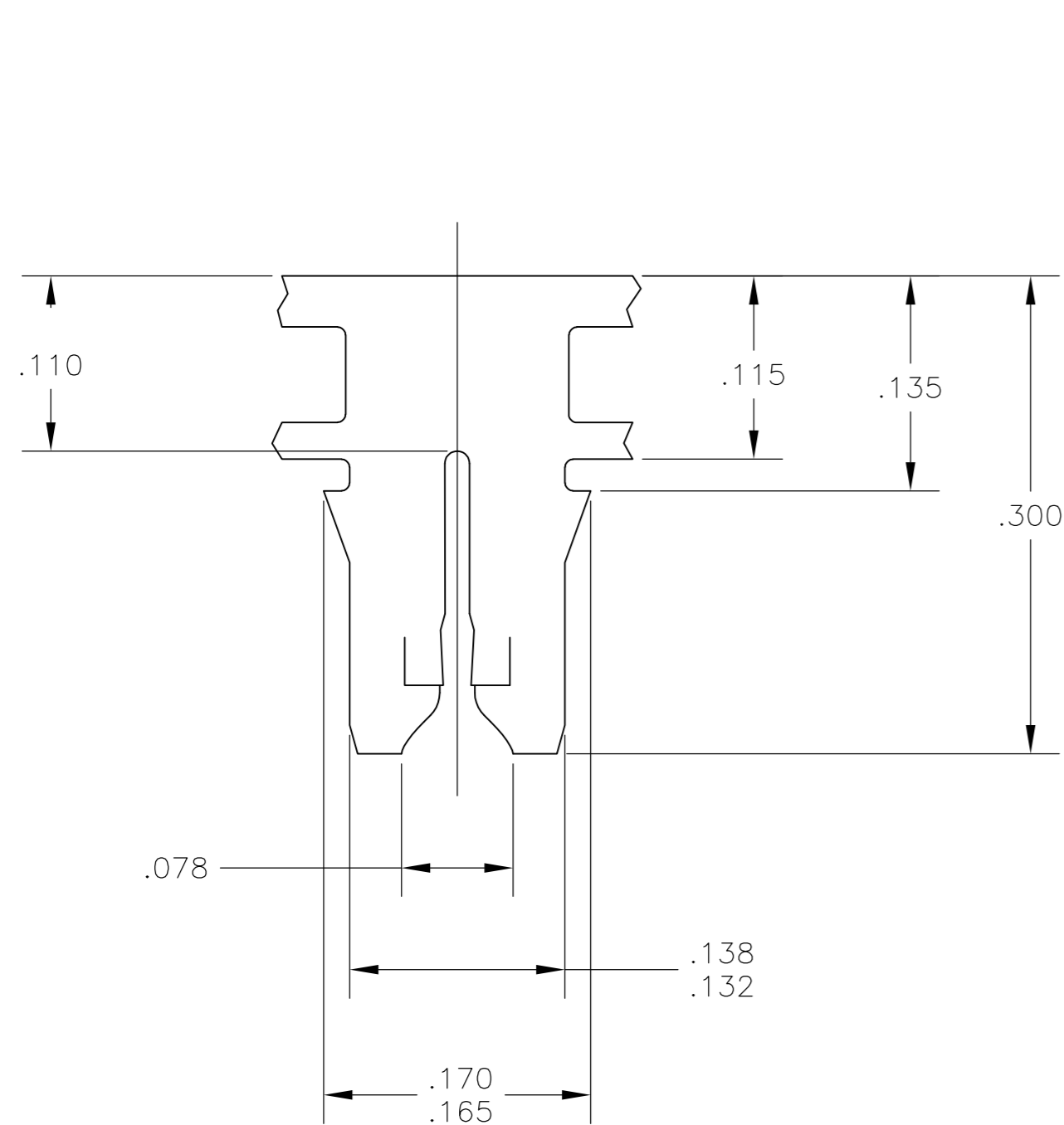
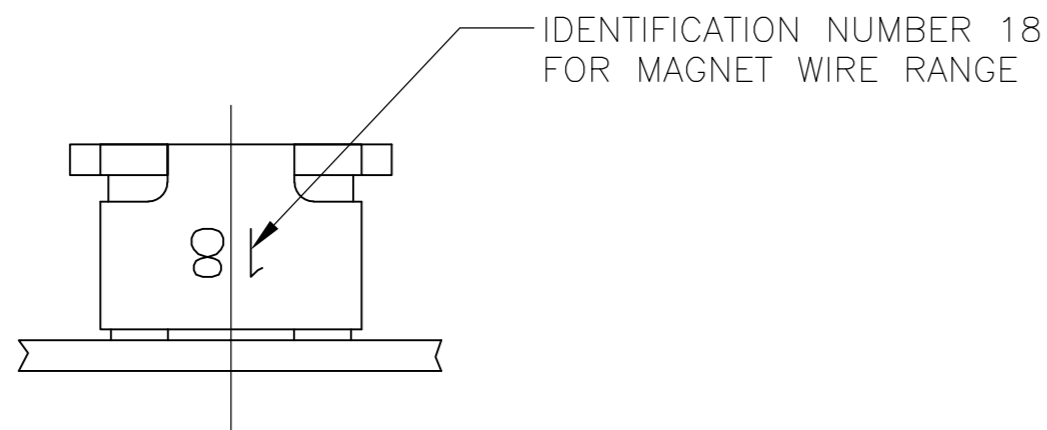


THIS DRAWING IS UNPUBLISHED. RELEASED FOR PUBLICATION
 © COPYRIGHT - By - ALL RIGHTS RESERVED.

LOC	DIST	REVISIONS			
P	LTR	DESCRIPTION	DATE	DWN	APVD
AF	50	B6	REVISED PER ECR ECR-13-011405	17JUL13	GRZ DZ

- 1 CONTINUOUS STRIP ON REELS (NO SPLICES) WITH TERMINALS LOCATED ON $.220 \pm .003$ CENTERS.
- 2 SLOT ACCEPTS 0.64-0.81mm [#22-#20] AWG COPPER MAGNET WIRE. SINGLE OR DOUBLE WIRE OF THE SAME SIZE AND TYPE.
- 3 PREPRODUCTION - FASR REQUIRED
- 4 SPECIAL CAVITY ANVIL LOCATION REQUIRED 4.83 ± 0.07 [.190 ± .003] REF APPLICATION SPEC 114-2046, SEC. 3.2 NOTE 7 REVISION T OR LATER.



REVERSE	1217973-2
OBSOLETE STANDARD	3 1217973-1
REELING	PART NUMBER

THIS DRAWING IS A CONTROLLED DOCUMENT.		DWN	15JUL03	TE Connectivity	
DIMENSIONS: INCHES		CHK	15JUL03	TERMINAL, SPLICE, MAG-MATE	
TOLERANCES UNLESS OTHERWISE SPECIFIED:		APVD	15JUL03	SIZE	CAGE CODE
0 PLC	± -	KURT A. RANDOLPH		A2	00779
1 PLC	± -	KURT A. RANDOLPH		DRAWING NO	1217973
2 PLC	± .010	KURT A. RANDOLPH		RESTRICTED TO	-
3 PLC	± -	KURT A. RANDOLPH		SCALE	10:1
4 PLC	± -	KURT A. RANDOLPH		SHEET	1 of 1
ANGLES	± -	KURT A. RANDOLPH		REV	B6
MATERIAL	FINISH	WEIGHT		CUSTOMER DRAWING	
H04 PHOS BRONZE	.000080 MIN TIN OVER .000020 MIN NICKEL	-			