

Multi Stage High Performance EMI Filter



- Rated current from 1 to 16 A
- Multi stage filter with good low frequency attenuation
- High differential mode and common mode attenuation performance
- Optional medical version (Type B)
- Optional safety version (Type A)

Approvals:



Technical specifications

Maximum continuous operating voltage: 250VAC, 50/60Hz

Operating frequency: dc to 400Hz

Rated currents: 1 to 16A @ 40°C max.

High potential test voltage: L → PE 3000VDC for 2 sec (standard types)

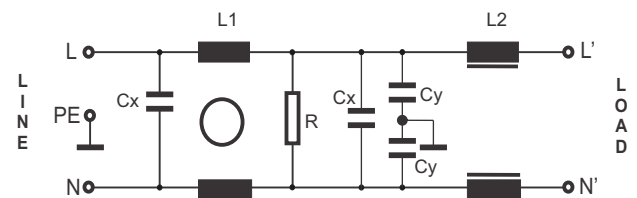
L → PE 3500VDC for 2 sec (B types)

L → N 1100VDC for 2 sec

Temperature range (operation and storage): -25°C to +100°C (25/100/21)

Design corresponding to: UL 1283.

CIRCUIT DIAGRAM:



Feature and Benefits

- BL2080 two-stage filters are designed for easy and fast chassis mounting.
- The BL2080 filters are also available as B versions with no Y-capacitors for medical applications as well as A versions with low capacitance for safety critical applications with a requirement for low leakage currents.
- All filters provide an general purpose conducted attenuation performance, based on chokes with high saturation resistance and excellent thermal behavior.
- The BL 2080 Filter are design for good low frequency attenuation
- BL 2080 filters are also available as single stage filters .
- Various terminal options allow you to select the desired connection style

Typical Application

- Electrical and electronic equipment
- Consumer goods
- Household equipment
- Medical equipment
- Electronic data processing equipment
- Office automation and datacom equipment
- Industrial application
- Machinery
- Various noisy application requires good attenuation performance filter

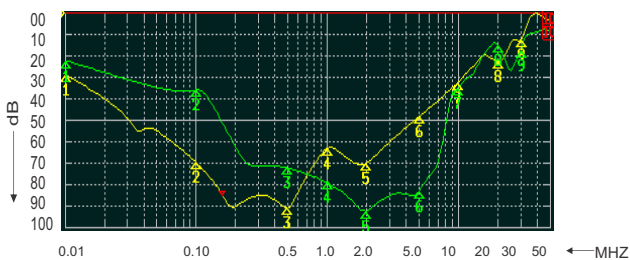
2 EMI FILTER > BL2080

FILTER SELECTION TABLE

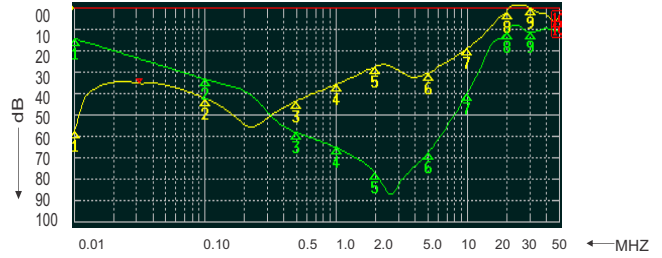
	Rated current @40°C	Leakage current @230V/50Hz	Inductance ΣL	Capacitance ΣCx	Capacitance ΣCy	Resistance ΣR	Connetion type		
	A	mA	mH	μF	nF	K_{Ω}			
BL2080-01-F	1	0.73	22.4	0.66	9.4	1000	F	W	
BL2080-03-F	3	0.73	9.96	0.94	9.4	470	F	W	
BL2080-06-F	6	0.73	7.91	2	9.4	220	F	W	
BL2080-10-F	10	0.73	4.56	2	9.4	220	F	W	
BL2080-12-F	12	0.73	3.30	2	9.4	220	F	W	
BL2080-16-F	16	0.73	2.84	2	9.4	220	F	W	S
BL2080A-01-F	1	0.073	22.4	0.66	0.94	1000	F	W	
BL2080A-03-F	3	0.073	9.96	0.94	0.94	470	F	W	
BL2080A-06-F	6	0.073	7.91	2	0.94	220	F	W	
BL2080A-10-F	10	0.073	4.56	2	0.94	220	F	W	
BL2080A-12-F	12	0.073	3.30	2	0.94	220	F	W	
BL2080A-16-F	16	0.073	2.84	2	0.94	220	F	W	S
BL2080B-01-F	1	0.002	22.4	0.66		1000	F	W	
BL2080B-03-F	3	0.002	9.96	0.94		470	F	W	
BL2080B-06-F	6	0.002	7.91	2		220	F	W	
BL2080B-10-F	10	0.002	4.56	2		220	F	W	
BL2080B-12-F	12	0.002	3.30	2		220	F	W	
BL2080B-16-F	16	0.002	2.84	2		220	F	W	S

Insertion Loss: Common mode -
 Differential mode-

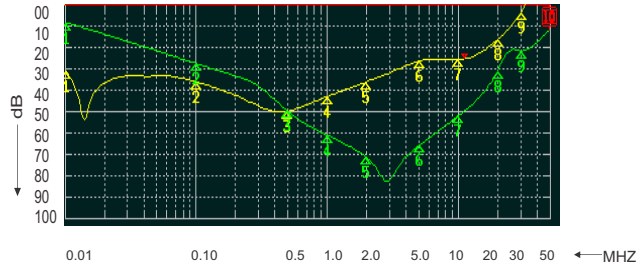
1 to 3 A



6A & 10A

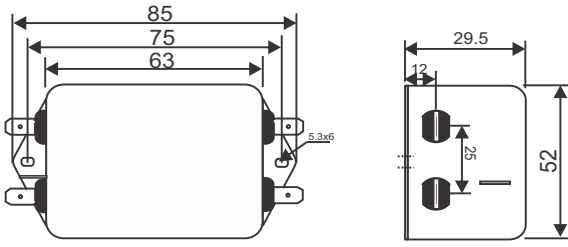


12 to 16 A

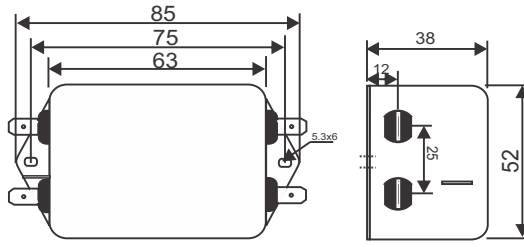


3 MECHANICAL DIMENSION (mm):

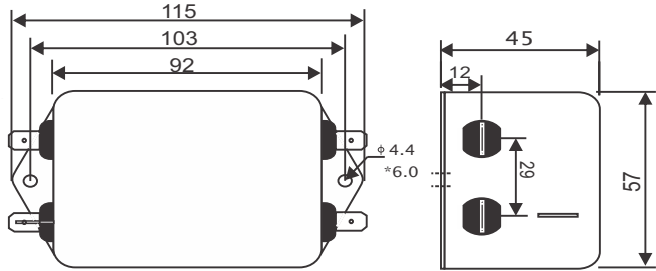
CONNECTION TYPE -F
1A



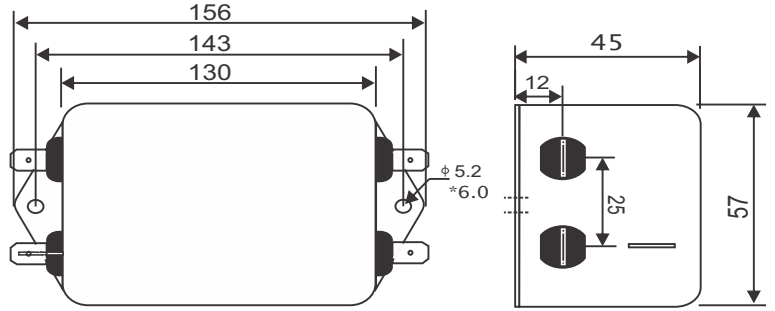
CONNECTION TYPE -F
3A



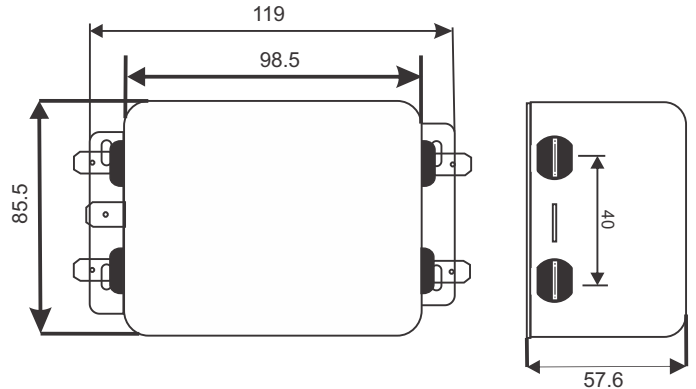
CONNECTION TYPE -F
6A



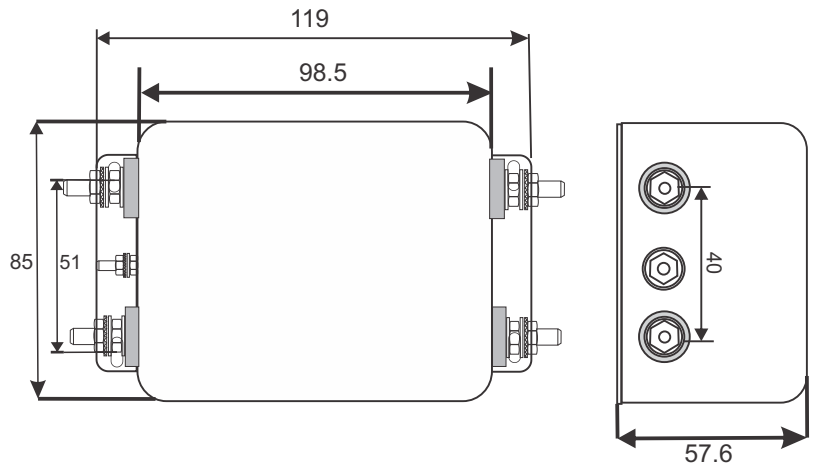
CONNECTION TYPE -F
10A & 12A



CONNECTION TYPE -F
16A



CONNECTION TYPE -S
16A



NOTE:

All Dimension in mm
 Connection type F-Fast On Terminal(6.3x0.8)
 S-Screw (M4)