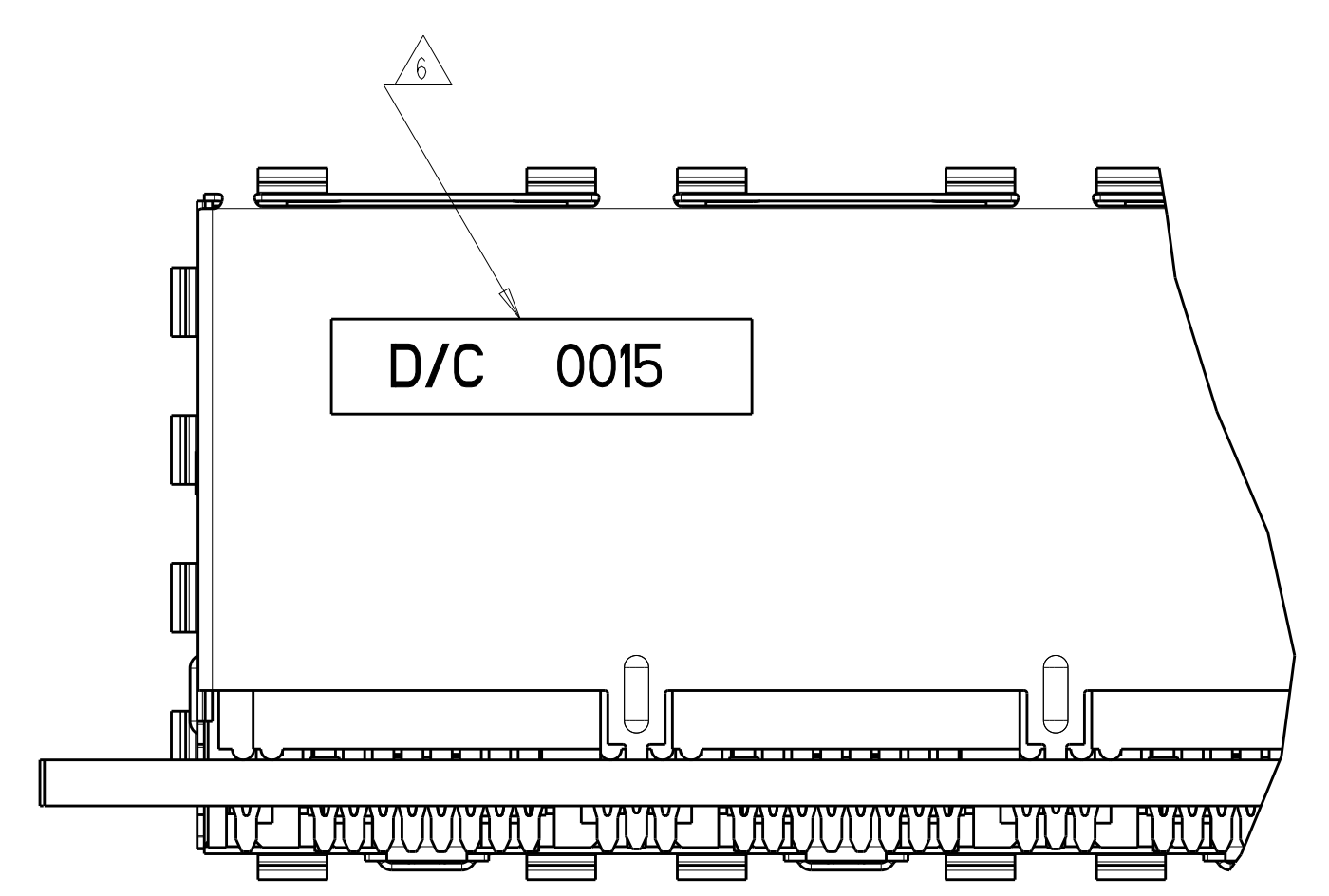
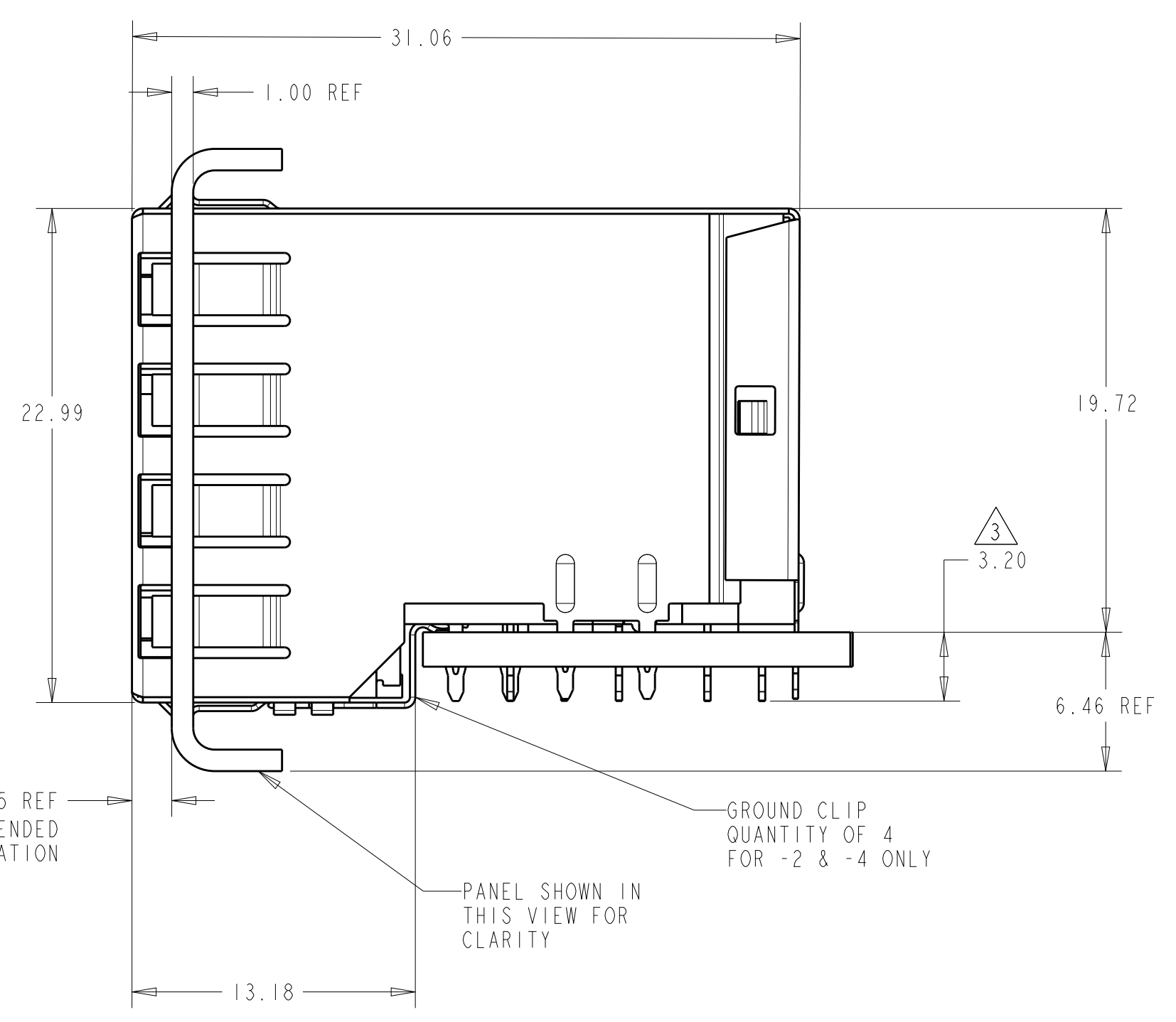
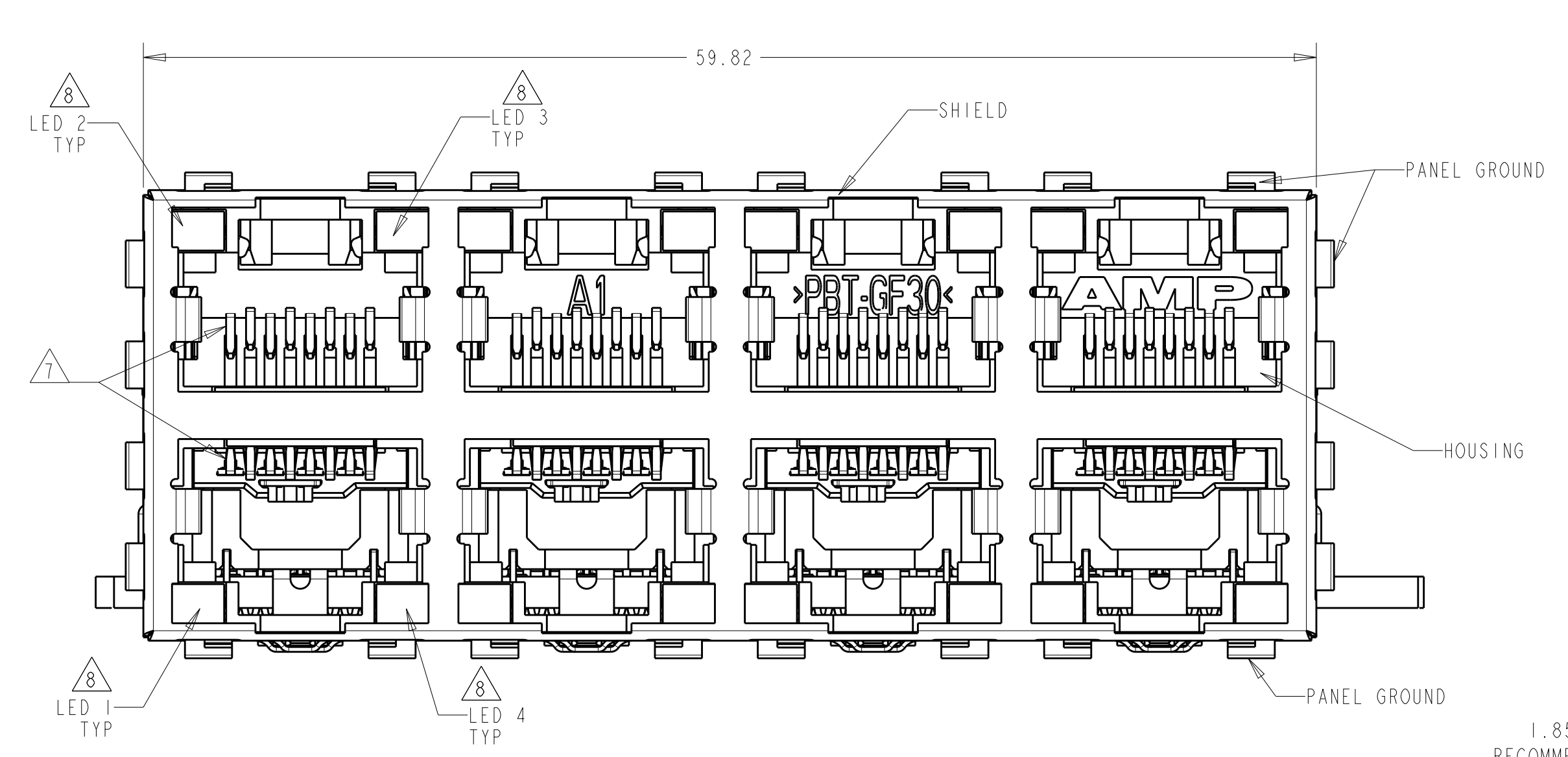
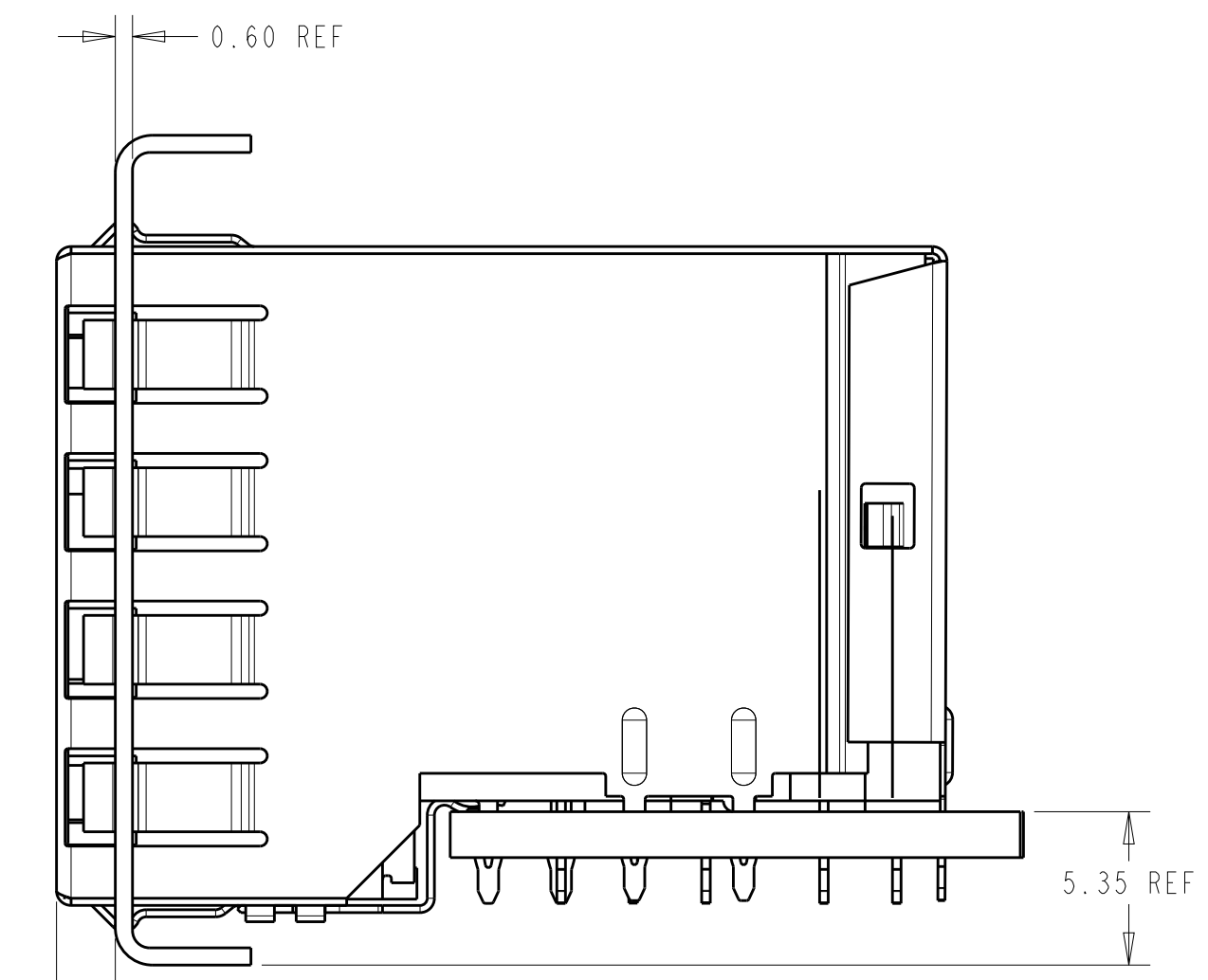


LOC		DIST		REVISIONS			
P	LTN	DESCRIPTION	DATE	DWN	APVD		
B	4	REVISED PER ECO-11-005033	05MAY2011	RK	HMR		
C		ECO-15-006810	22JAN2016	LL	SH		



**ATCA PANEL AND PRINTED CIRCUIT BOARD ASSEMBLY LAYOUT**



**AMC PANEL AND PRINTED CIRCUIT BOARD ASSEMBLY LAYOUT**

- MATERIAL:  
 HOUSING: PBT POLYESTER, BLACK, UL 94V-0  
 TERMINALS: 0.33 THICK PHOSPHOR BRONZE PLATED WITH 1.27µm MINIMUM THICK HARD GOLD IN LOCALIZED AREA AND 2.0µm MINIMUM THICK MATTE TIN IN COMPLIANT PIN TERMINAL AREA OVER 1.27µm MINIMUM THICK NICKEL UNDERPLATE  
 SHIELD: 0.25 THICK COPPER ALLOY PLATED WITH 2.03µm MINIMUM TIN OVER 1.27 µm MINIMUM NICKEL  
 GROUND CLIP: 0.25 THICK COPPER ALLOY PRE-PLATED WITH 2.03µm MINIMUM MATTE TIN OVER 1.27µm MINIMUM NICKEL  
 LIGHT EMITTING DIODE (LED): DIFFUSED EPOXY LENS, 12.95 CARBON STEEL WIREFRAME LEADS 8.89µm THICK Sn/Cu OVER 2.03µm THICK Ag OVER 1.02µm THICK Cu OVER 3.56µm THICK Ni OVER 1.02µm THICK Cu UNDERPLATE  
 LED COMPLIANT PIN CONTACTS: 0.3 THICK BRASS PLATED WITH WITH 2µm MINIMUM MATTE TIN OVER 1.27µm MINIMUM NICKEL UNDERPLATE.
  - JACK CAVITY CONFORMS TO FCC RULES AND REGULATIONS, PART 68 SUBPART F.
- 3 MAXIMUM PIN LENGTH 3.40 FROM TOP SURFACE OF PC BOARD  
 4 FINISHED PLATED THROUGH HOLE DIAMETER - ANNULAR RING DIAMETER 1.3 TO 1.5  
 5 DATUMS AND BASIC DIMENSIONS ESTABLISHED BY CUSTOMER  
 6 DATE CODE LOCATED ON REAR OF PART APPROXIMATELY AS SHOWN  
 7 CONTACTS ARE NOT INTENDED TO BE ALIGNED WITH EACH OTHER  
 8 SUGGESTED OPERATING CURRENT FOR LEDS IS 20mA  
 9 NO PANEL GROUNDS

GREEN/YELLOW	GREEN/YELLOW	GREEN/YELLOW	GREEN/YELLOW	WITH GROUND CLIP	1888507-5
GREEN/YELLOW	GREEN/YELLOW	GREEN/YELLOW	GREEN/YELLOW	WITH GROUND CLIP	1888507-4
YELLOW	YELLOW	GREEN	GREEN	WITHOUT GROUND CLIP	1888507-3
GREEN	GREEN	GREEN	GREEN	WITH GROUND CLIP	1888507-2 (SHOWN)
GREEN	GREEN	GREEN	GREEN	WITHOUT GROUND CLIP	1888507-1
LED #4 (LOWER-RIGHT)	LED #3 (UPPER-RIGHT)	LED #2 (UPPER-LEFT)	LED #1 (LOWER-LEFT)	DESCRIPTION	PART NUMBER

THIS DRAWING IS A CONTROLLED DOCUMENT. DWN: R. SCHRUM/L. A. WAYER 24OCT2006  
 CHK: J. WESTMAN 24OCT2006  
 APVD: S. FLICKINGER 24OCT2006

DIMENSIONS: mm  
 0 PLC ±  
 1 PLC ±0.13  
 3 PLC ±  
 4 PLC ±  
 ANGLES ±1

TOLERANCES UNLESS OTHERWISE SPECIFIED:  
 FINISH SEE NOTE 1

MATERIAL SEE NOTE 1

NAME: STACKED MODULAR JACK ASSEMBLY, 2x4 OFFSET, WITH LEDS, 8 POSN, RJ45 SHIELDED, PANEL GROUNDS, CAT 5  
 PRODUCT SPEC: 108-1854  
 APPLICATION SPEC: 114-2160  
 WEIGHT: -

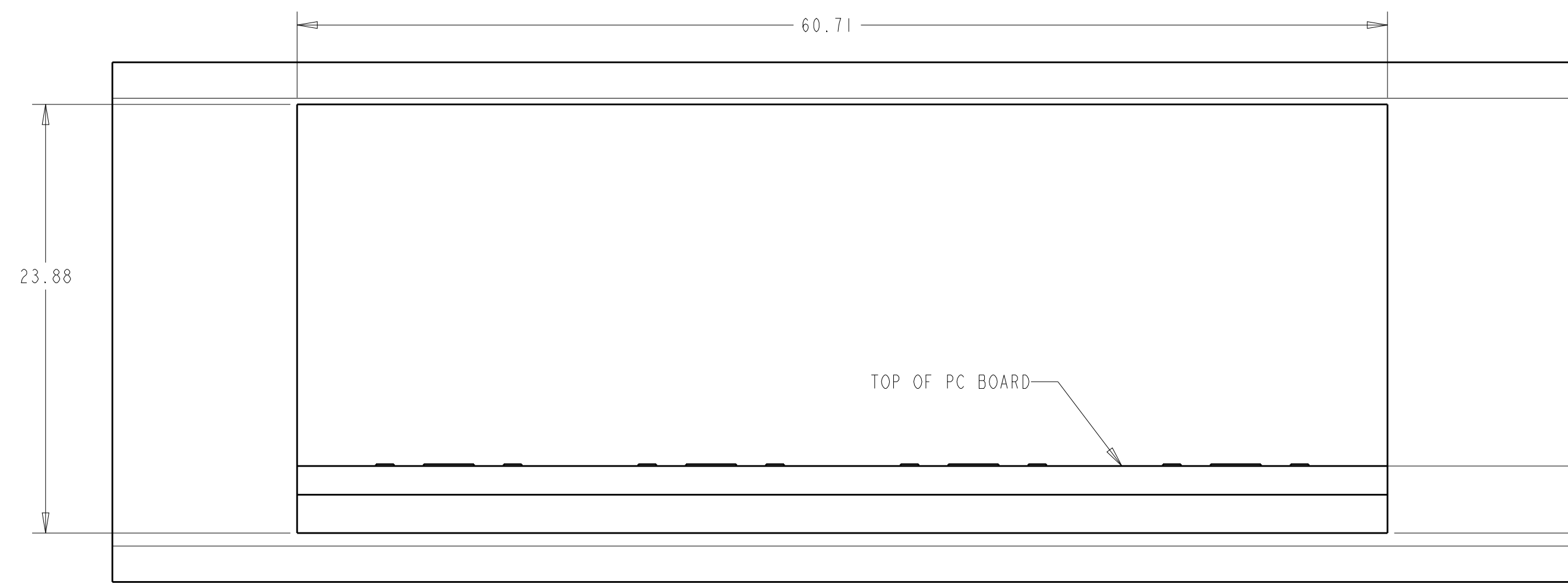
SCALE: 4:1 SHEET 1 OF 2 REV C

STE TE Connectivity  
 A1 00779 ©=1888507

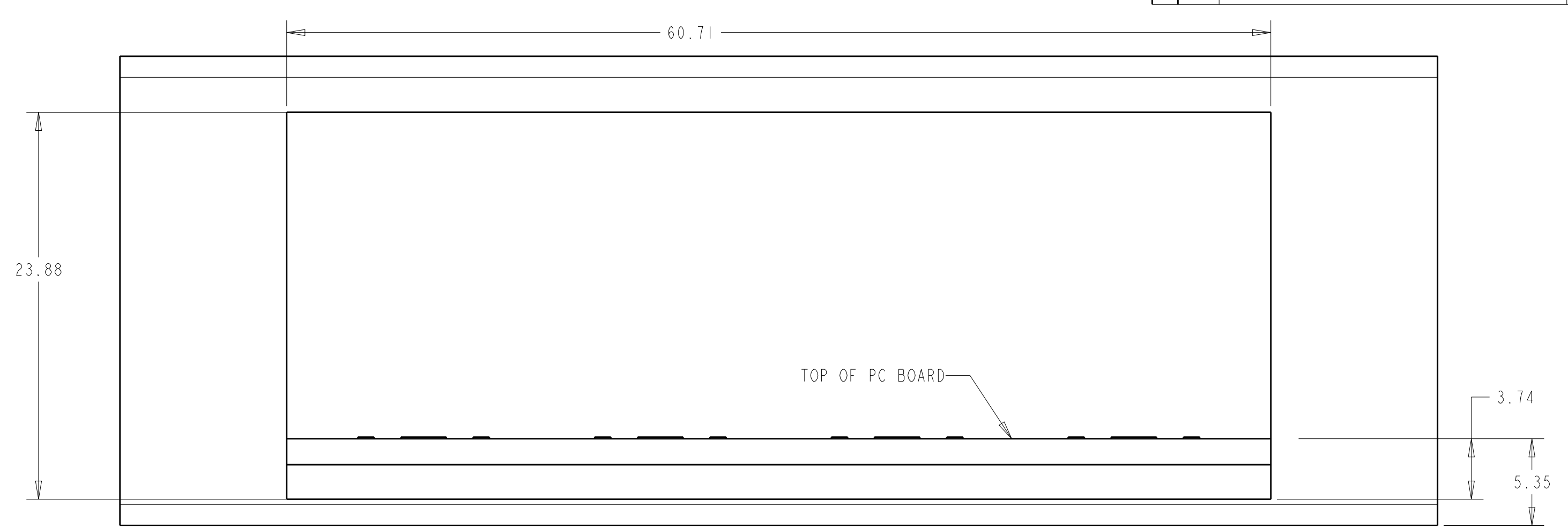
LOC	DIST	REV	DATE	BY	APPV
AA	00				

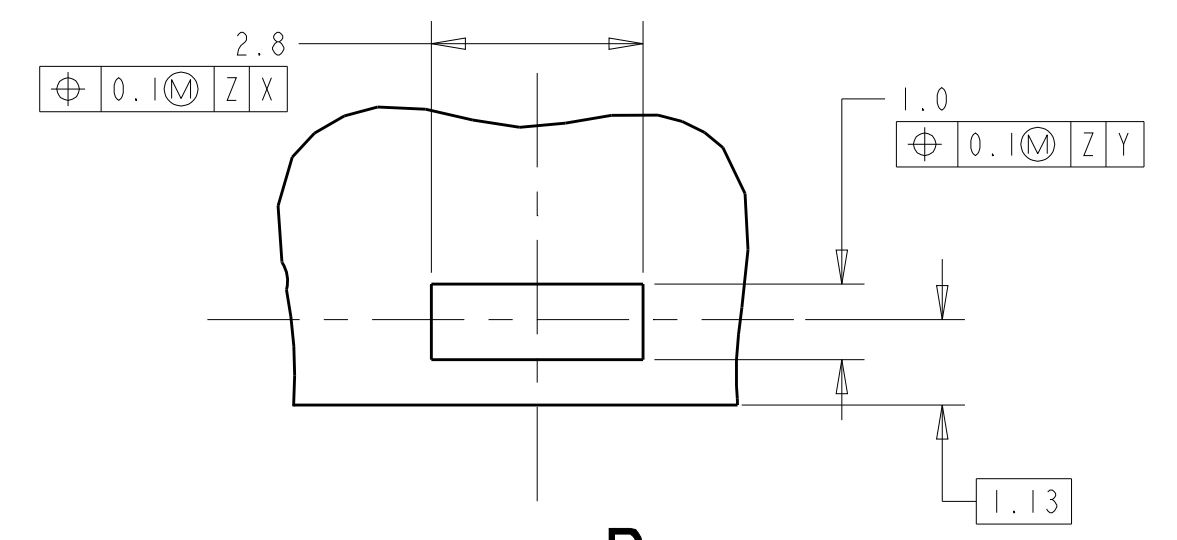
REVISIONS		DATE	BY	APPV
1	SEE SHEET 1			



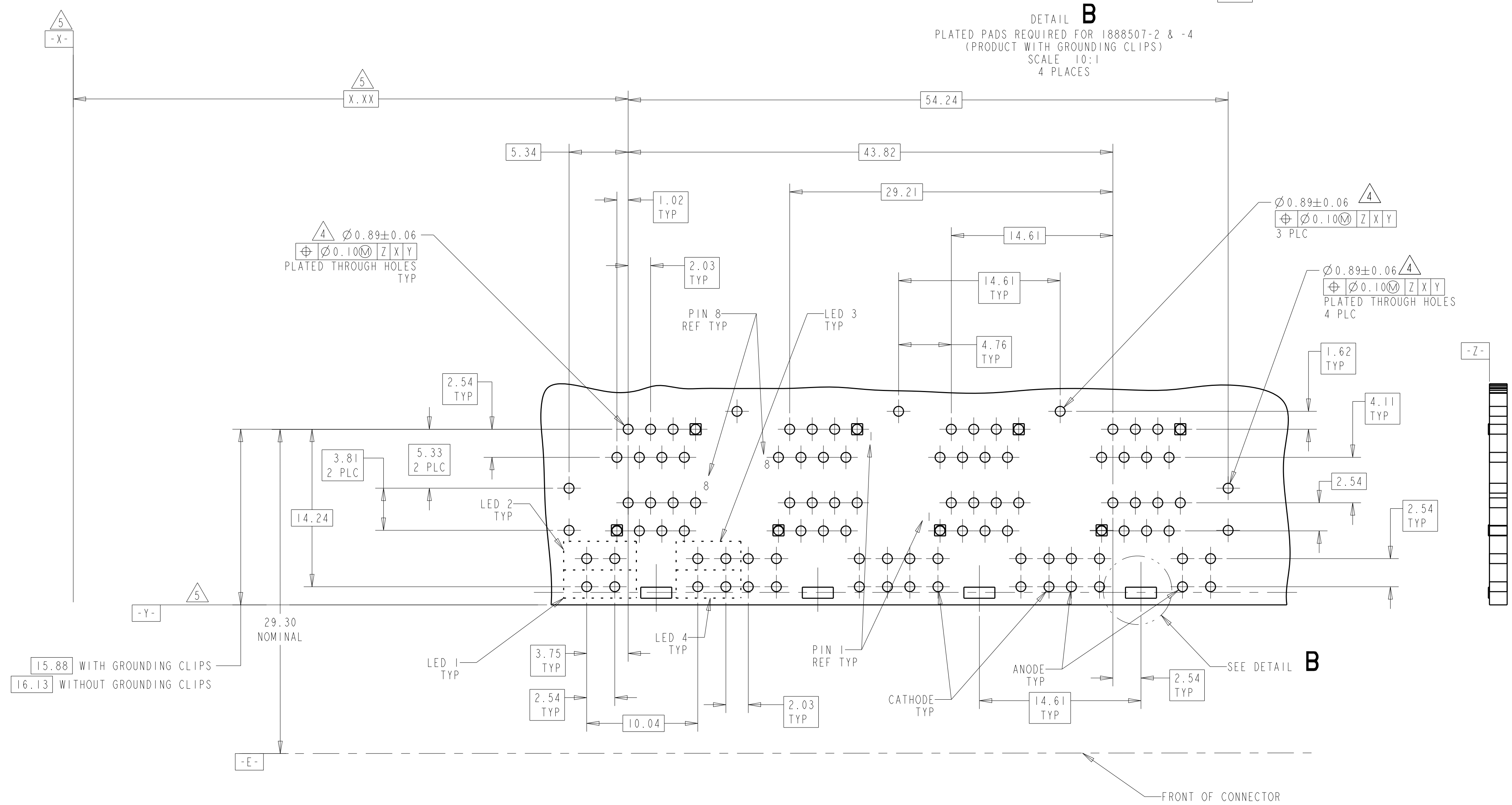
ATCA PANEL AND PRINTED CIRCUIT BOARD LAYOUT



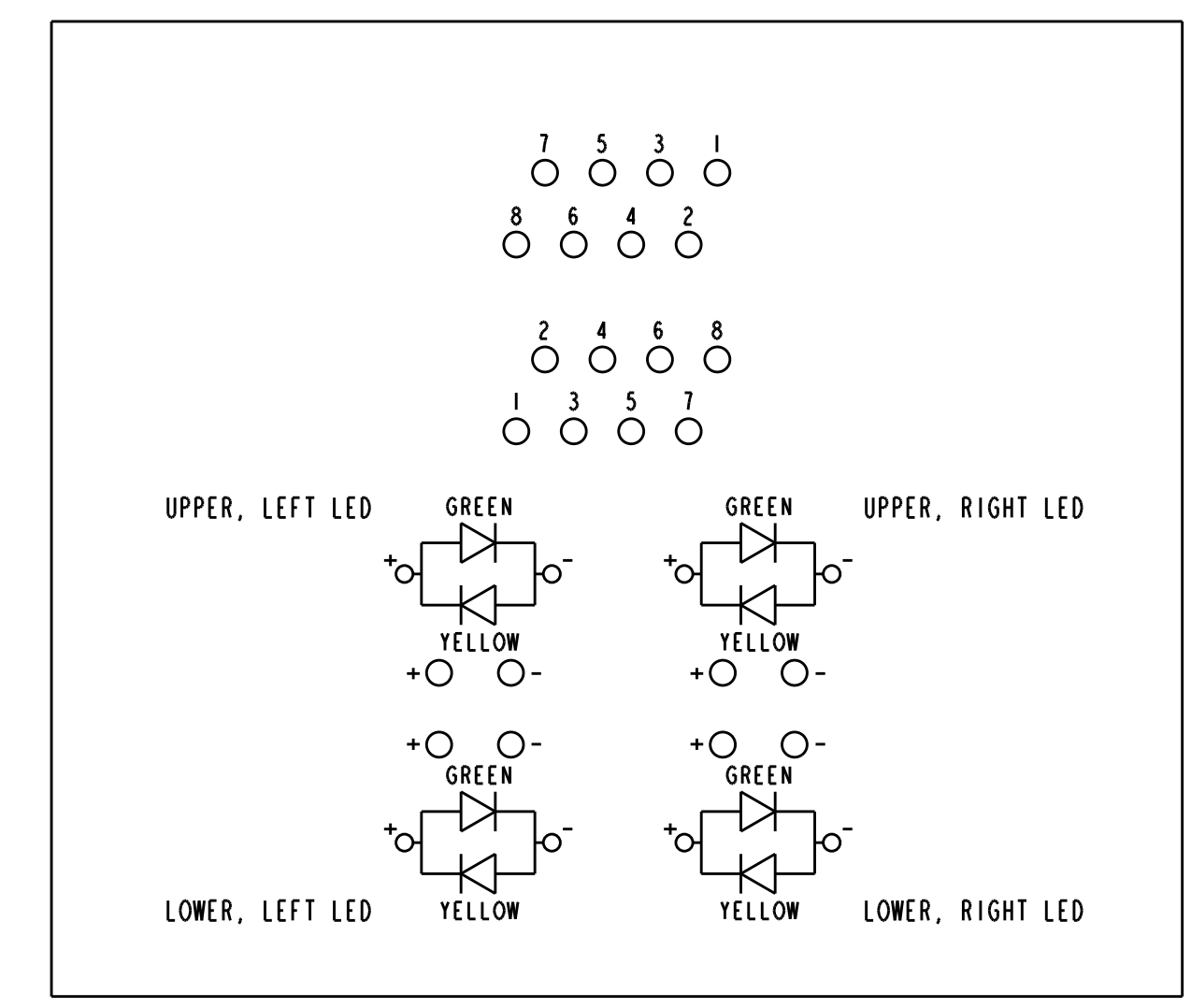
AMC PANEL AND PRINTED CIRCUIT BOARD LAYOUT



DETAIL B  
 PLATED PADS REQUIRED FOR 1888507-2 & -4  
 (PRODUCT WITH GROUNDING CLIPS)  
 SCALE 10:1  
 4 PLACES



PC BOARD LAYOUT (COMPONENT SIDE)



BI-COLOR LED SCHEMATIC FOR 1888507-4,5  
 SCALE 4:1

THIS DRAWING IS A CONTROLLED DOCUMENT.		OWN: R. SCHRUM/L. WAYER CHK: J. WESTMAN APPV: S. FLICKINGER	DATE: 24OCT2006 24OCT2006 24OCT2006	TE Connectivity NAME: STACKED MODULAR JACK ASSEMBLY, 2x4 OFFSET, WITH LEDS, 8 POSN, RJ45 SHIELDED, PANEL GROUNDS, CAT 5
DIMENSIONS: mm	TOLERANCES UNLESS OTHERWISE SPECIFIED:	PRODUCT SPEC: 108-1854	APPLICATION SPEC: 114-2160	
MATERIAL: SEE NOTE 1	FINISH: SEE NOTE 1	WEIGHT: -	CAGE CODE: 00779	DRAWING NO: 1888507
CUSTOMER DRAWING			SCALE: 4:1	SHEET: 2 OF 2