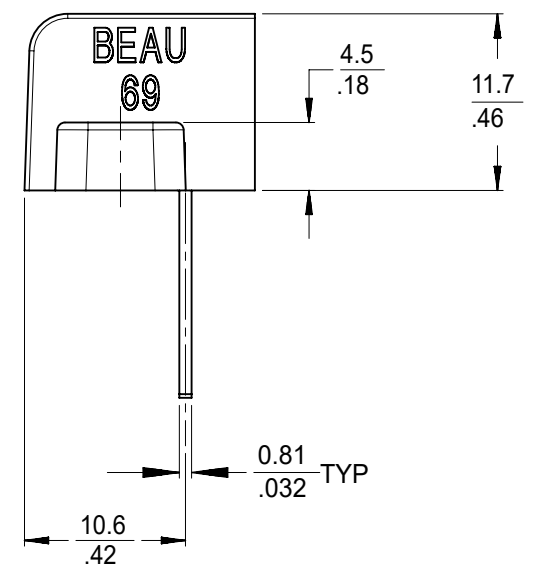
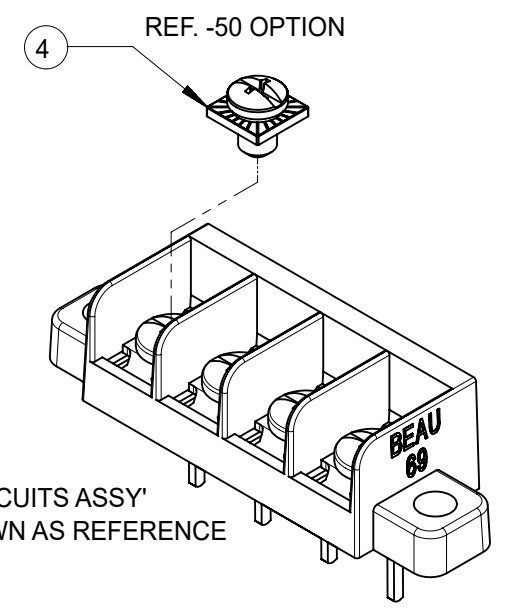
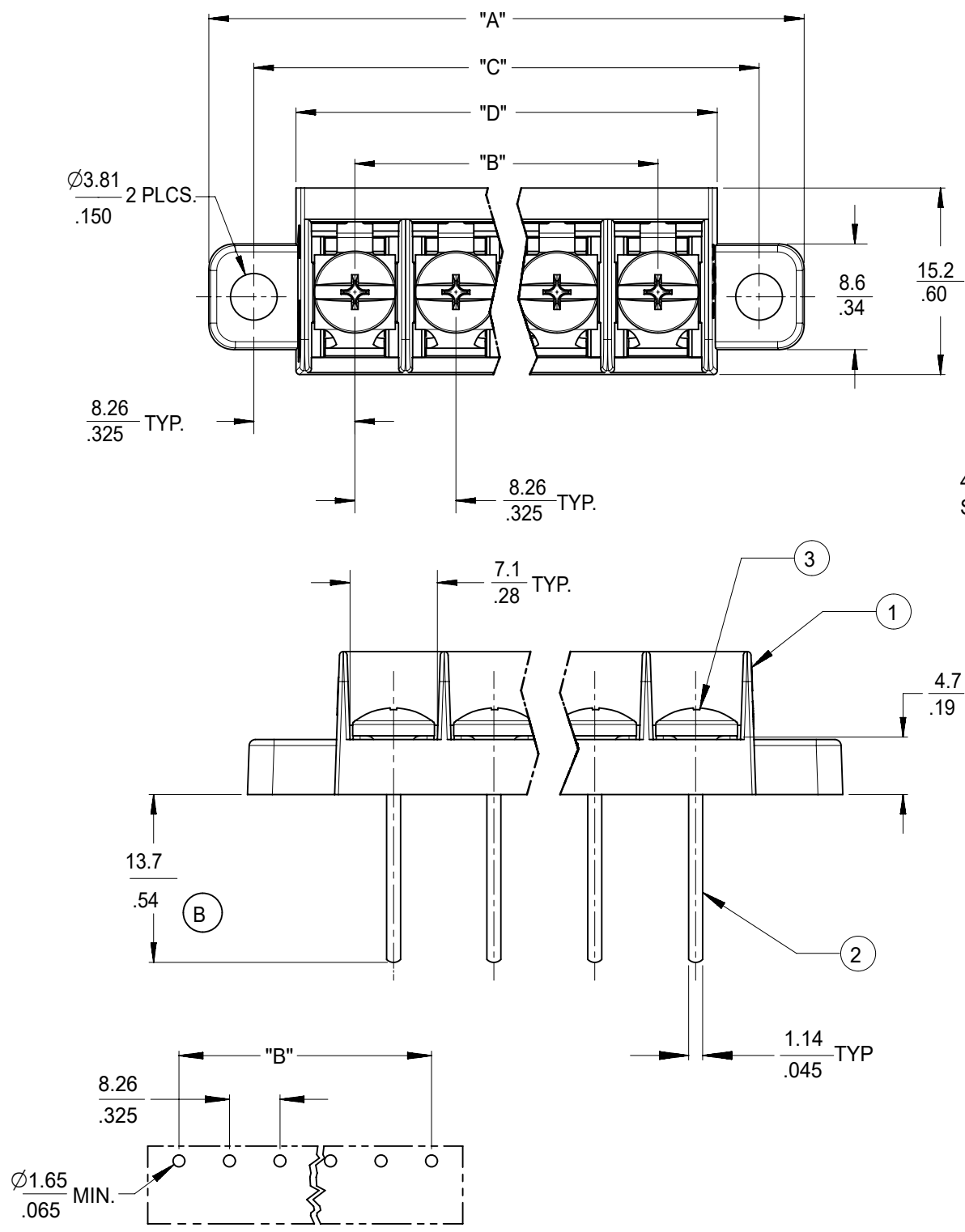


NO. OF CIRCUITS	DIM. "A"		DIM. "B"		DIM. "C"		DIM. "D"		ASSEMBLY MATERIAL NO. (STANDARD)	ASSEMBLY MATERIAL NO. (-50 OPT)
	mm	in	mm	in	mm	in	mm	in		
06	65.2	2.57	41.3	1.63	57.8	2.28	50.9	2.01		386913306
20	180.7	7.12	156.8	6.8	173.4	6.83	166.5	6.56	386912120	386913320



- NOTES:
1. MATERIAL: SEE TABLE
 2. FINISHES: SEE TABLE.
 3. "XX" REFERS TO THE QUANTITY OF CIRCUITS.
 4. ROHS COMPLIANT.

ITEM	QTY.	DESCRIPTION	MATERIAL	FINISH
4	XX	SCREW #6-32X.155 PAN PHSZLN/BR/STEEL -50 OPT	STEEL	ZN, CLEAR CHROMATE
3	XX	SCREW #6-32X.160 PAN PHSZLN/BRASS (STANDARD)	BRASS	NICKEL PLATE
2	XX	TERMINAL, PC	BRASS	TIN PLATE
1	1	INSULATOR	POLYESTER (PBT)	BLACK
			MATERIAL	FINISH

THIS DRAWING CONTAINS INFORMATION THAT IS PROPRIETARY TO MOLEX ELECTRONIC TECHNOLOGIES, LLC AND SHOULD NOT BE USED WITHOUT WRITTEN PERMISSION

DIMENSION UNITS	SCALE	CURRENT REV DESC: OBSOLETE PART NUMBERS AS PER PCN#510807		
MM/IN	2:1			
GENERAL TOLERANCES (UNLESS SPECIFIED)				
	MM	INCH		
4 PLACES	±	±		
3 PLACES	±	± 0.005		
2 PLACES	± 0.13	± 0.01		
1 PLACE	± 0.3	±		
0 PLACES	±	±		
ANGULAR TOL		± 2.0°		
DRAFT WHERE APPLICABLE MUST REMAIN WITHIN DIMENSIONS		THIRD ANGLE PROJECTION	DRAWING	SERIES
			B-SIZE	38691

EC NO: 726454			2022/10/20		
DRWN: LIKITV			2022/11/30		
CHK'D: GGA			2022/11/30		
APPR: GGA			2022/11/30		
INITIAL REVISION:					
DRWN: JENCINAS			2012/07/17		
APPR: JMACNEIL			2012/09/14		
DOCUMENT NUMBER		DOC TYPE	DOC PART	REVISION	
SD-38691-004		PSD	001	B1	
MATERIAL NUMBER		CUSTOMER		SHEET NUMBER	
SEE CHART		GENERAL MARKET		1 OF 1	