

- 1
- 2
- 3
- 4
- 5
- 6
- 7
- 8
- 9
- 10
- 11
- 12
- 13
- 14
- 15
- 16
- 17
- 18

MATERIAL

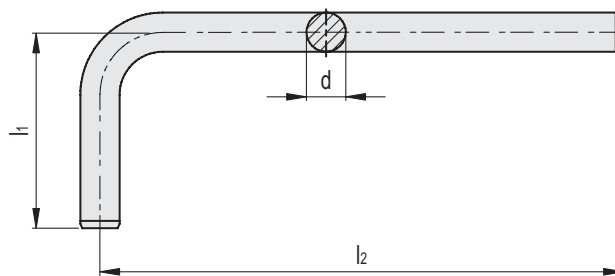
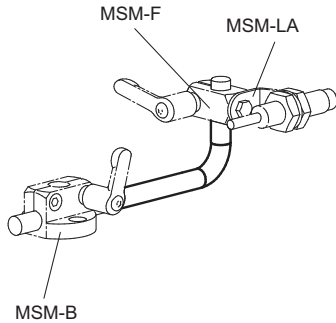
AISI 304 stainless steel.

FEATURES AND APPLICATIONS

MSM-TL connectors are suitable for use with the various types of MSM connecting clamps. They allow to create compact and space-saving assembly structures in an efficient and economic way with just a few components.

SPECIAL EXECUTIONS ON REQUEST

Other executions with l1 and l2 different dimensions.



Conversion Table	
1 mm = 0.039 inch	
d	
mm	inch
8	0.31
10	0.39

Code	Description	d	l1	l2	⚖️
500785	MSM-TL-D8-30-90-NI	8	30	90	45
500786	MSM-TL-D8-50-150-NI	8	50	150	77
500787	MSM-TL-D8-80-240-NI	8	80	240	125
500788	MSM-TL-D10-50-150-NI	10	50	150	118
500789	MSM-TL-D10-70-210-NI	10	70	210	170
500790	MSM-TL-D10-100-300-NI	10	100	300	240

Levelling feet and supports