

Power Schottky Barrier Diodes (For Large-Signal Use) ML type (Micaless Type)

Sanyo Schottky barrier diodes (SBD) have been developed by our original technology. They are available for making sets smaller in size and lighter in weight.

Sanyo resin-molded type (ML type) SBDs with breakdown voltage of 50V and 90V can be applied to various uses.

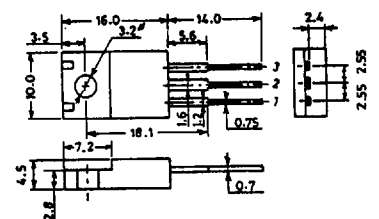
Features

- ☆ High reliability because of planar type.
- ☆ Very low forward voltage.
- ☆ Low switching noise.
- ☆ We have a product line with breakdown voltages of 50V and 90V.
- ☆ Micaless package can be mounted easily.

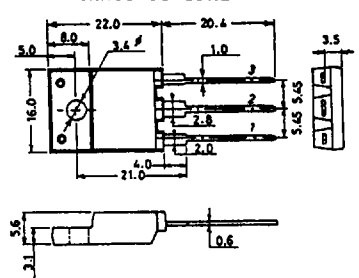
50V Series (T_a = 25°C)

Type No.	Package	Absolute Maximum Ratings			Electrical Characteristics						
		V _{RRM} (V)	I _O (A)	I _{FSM} (A)	I _F (A)	V _F max (V)	V _R (V)	I _R max (mA)	I _F (A)	t _{rr} max (nS)	R _{thj-c} (°C/W)
SB20-05J	TO-220ML	50	2	60	1	0.55	25	2	0.1	30	5.5
SB40-05J			4	80	2				0.2	40	4.5
SB60-05J			6	100	3				0.3	50	4.0
SB80-05J			8	100	4				0.4	60	3.5
SB100-05J			10	100	5				0.5	60	3.5
SB120-05R	TO-3PML	90	12	120	6	0.85	45	2	0.6	70	2.2
SB160-05R			16	140	8				0.8	75	2.0
SB200-05R			20	200	10				1	85	1.8
SB250-05R			25	250	12.5				1.2	90	1.7
SB300-05R			30	250	15				1.5	90	1.7

Case Outlines (unit: mm)
1: Anode, 2: Cathode, 3: Anode
SANYO: TO-220ML



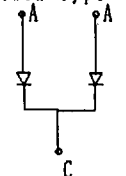
SANYO: TO-3PML



90V Series (T_a = 25°C)

SB30-09J	TO-220ML	90	3	40	1.2	0.85	45	2	0.2	30	5.5
SB50-09J			5	60	2				0.2	35	4.5
SB80-09J			8	80	3				0.3	40	4.0
SB100-09J			10	80	4				0.4	45	3.5
SB160-09R	TO-3PML	90	16	100	6	0.85	45	2	0.6	50	2.2
SB200-09R			20	120	8				0.8	55	2.0
SB250-09R			25	160	10				1	60	1.8
SB300-09R			30	180	12				1.2	70	1.7

Electrode connection: twin type



These specifications are subject to change without notice.

Next page