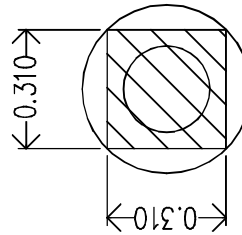
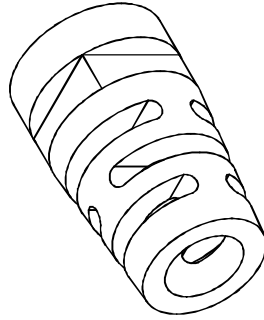
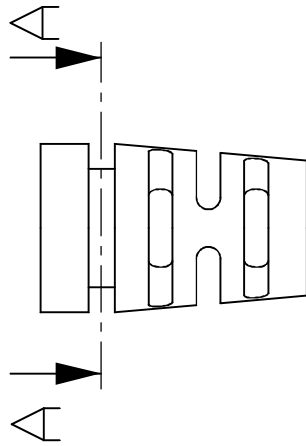
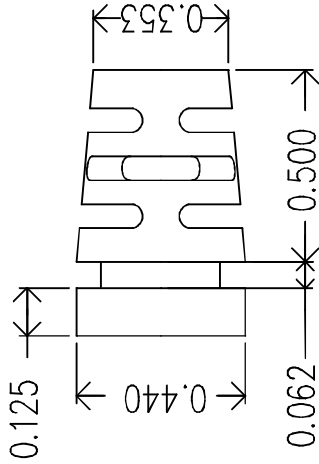
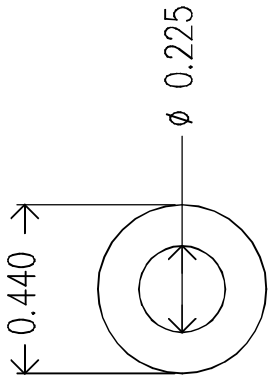


| REVISIONS | | DATE | APPROVED |
|-----------|------|------|----------|
| ZONE | REV. | | |
| | | | |



Mold Material: ISC P/N: 5000214, PVC, M1472, Black, RoHS

| NAME | DATE | SCALE | WEIGHT |
|----------------------|------------------------------------|-------|--------------|
| R FIERRO | 09/03/04 | | |
| DRAWN | ISC Engineering | | |
| CHECKED | 4351 Schaefer Ave, Chino, CA 91710 | | |
| ENG APPR. | Ph: 909-596-3315 Fax: 909-596-3335 | | |
| MFG APPR. | www.iscengineering.com | | |
| D.A. | www.overtmoldtooling.com | | |
| COMMENTS: | | | |
| MATERIAL | --- | | |
| FINISH | --- | | |
| DO NOT SCALE DRAWING | | | |
| APPLICATION | | | |
| NEXT ASSY | | | |
| USED ON | | | |
| SIZE | 1461080-225-B-310X310-440-0 | | |
| REV. | | | |
| A | DWG. NO. 1467108 | | |
| SCALE: 3:1 | | | |
| | | | SHEET 1 OF 1 |

Dimensions are subject to change.
 PROPRIETARY AND CONFIDENTIAL
 THE INFORMATION CONTAINED IN THIS DRAWING IS THE SOLE PROPERTY OF ISC ENGINEERING. ANY REPRODUCTION IN PART OR AS A WHOLE WITHOUT THE WRITTEN PERMISSION OF ISC ENGINEERING IS PROHIBITED.

