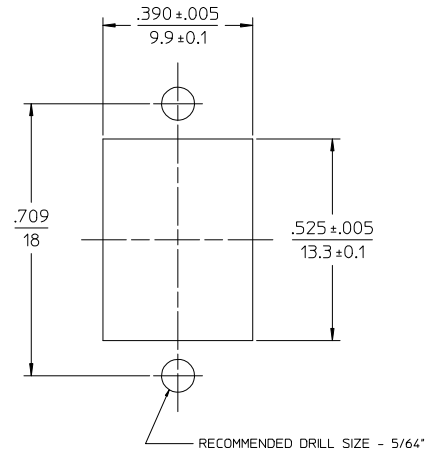
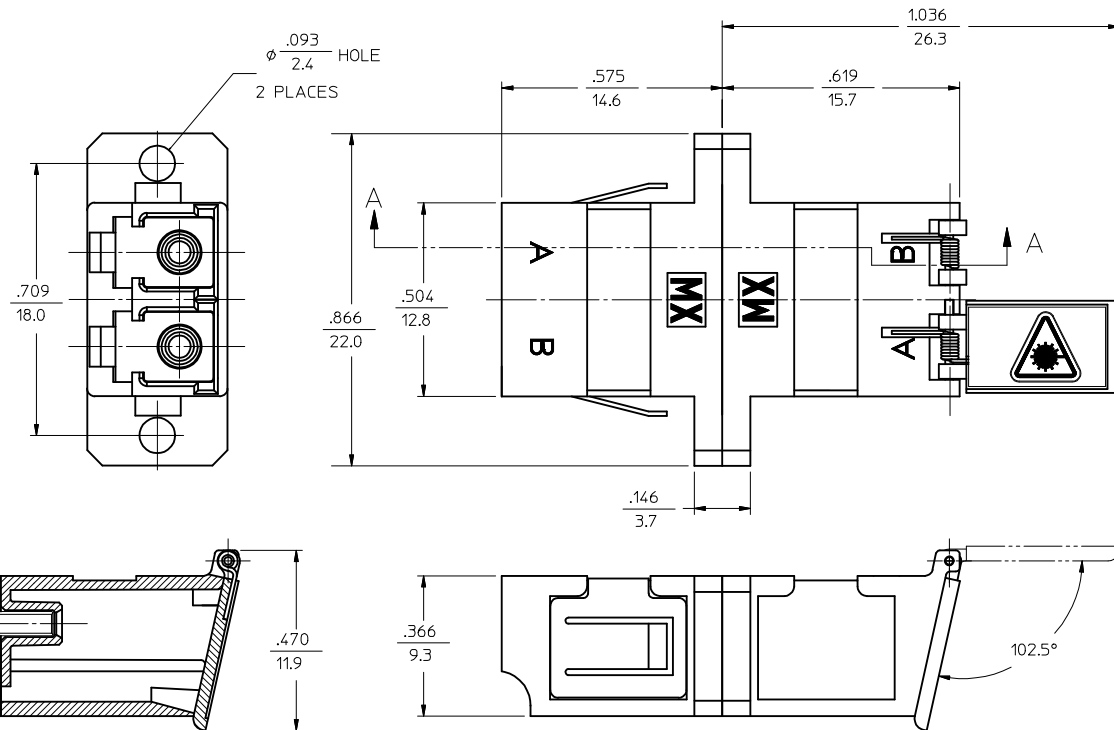


ADAPTER P/N	ADAPTER COLOR	SPLIT SLEEVE MATERIAL
106127-0200	BEIGE	Ph. Bronze
106127-1220	BLUE	Zr



RECOMMENDED MOUNTING CUTOUT FOR .063 THICK PANEL

SECTION A-A

NOTES:

- DUST CAPS ARE NOT SHOWN, BUT INCLUDED.
- TWO (2) SCREWS #2-32 X 5/16", PHILLIPS PAN HEAD, STEEL, ZINC-PLATED, THREAD-FORMING TYPE B ARE SUPPLIED WITH EACH ADAPTER.

ENTER DESCRIPTION EC NO: MF2009-0243 DRW:KPEVZNER CHKD: 2008/12/04 APPR:IGJMIN 2008/12/05	QUALITY SYMBOLS ▽=0 ▽=0	GENERAL TOLERANCES (UNLESS SPECIFIED)		DIMENSION STYLE IN/MM	SCALE 1:1	DESIGN UNITS INCH	THIRD ANGLE PROJECTION		
		4 PLACES ± --- ± ---	3 PLACES ± --- ± ---	2 PLACES ± --- ± ---	1 PLACE ± --- ± ---	DRAWN BY RPACIFICI	DATE 2006/01/26	TITLE LC DUPLEX ADAPTER, SHUTTER, FLANGE, SC FOOTPRINT, W/SCREWS	
		ANGULAR ±1/2°				CHECKED BY	DATE	MOLEX INCORPORATED	
		DRAFT WHERE APPLICABLE MUST REMAIN WITHIN DIMENSIONS				APPROVED BY	DATE	MATERIAL NO. SEE TABLE	DOCUMENT NO. SD-106127-0200