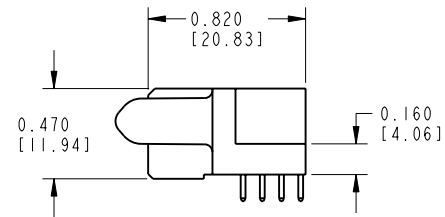
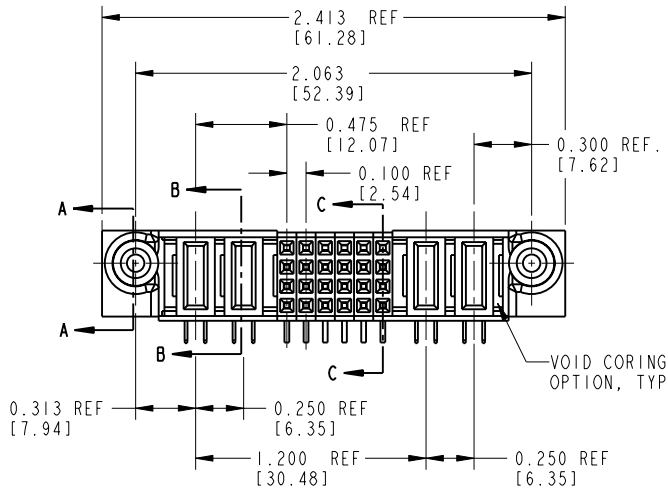
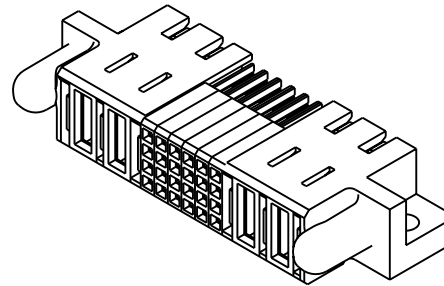
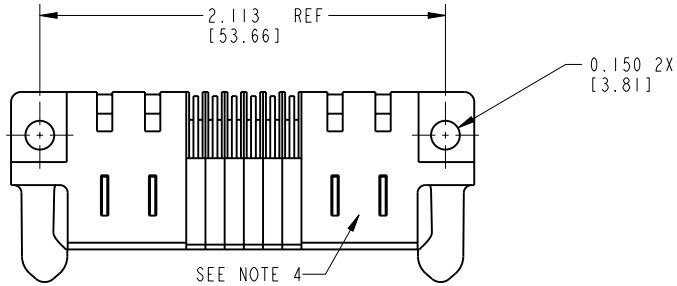


Tous droits strictement réservés. Reproduction ou communication o des liers interdité sous quelque forme que ce soit sans autorisation écrite du propriétaire. Propriété de c FCI. Droits de reproduction FCI.



All rights strictly reserved. Reproduction or issue to third parties in any form whomever is not permitted without written authority from the proprietor. Property of FCI. Copyright FCI.

PRODUCT NO. 51427-001-- NOTE 2	ROWS D C B A	POWER		SIGNAL					POWER		F2			
		F1	P4	P3	6	5	4	3	2	1		P2	P1	
			PA	PA	H	H	H	H	H	H	H	PA	PA	
					G	G	G	G	G	G	G			
					F	F	F	F	F	F	F			
					E	E	E	E	E	E	E			



CONFIDENTIAL

mat'l code				SEE NOTES		tolerances unless otherwise specified		CUSTOMER COPY		FCI www.fciconnect.com	
ltr	ecn no.	dr	date	linear	.XX±.01/.X±.3		projection		title		
A	V91744	SAR	02-21-00		.XXX±.005/.X±.13				2P + 24S + 2P R/A RECEPTALE		
B	V01376	EKK	06-08-00	angles	.XXXX±.0020/.XXX±.051		INCH/MM		product family		
C	V01555	CHB	06-29-00		0°±2°		scale		PwrBlade		
D	V21786	TAB	11-18-02	dr	C. BAROT	01-18-99	1:1		code		
E	DG05-0242	SJ	07/25/05	enrg	J. BROWN	02-18-00			size		
F	DG06-0187	JMG	05/27/06	chr	J. BROWN	01-18-99			dwg no		
				appd	J. BROWN	02-21-00			51427		
sheet index		revision sheet		F	F	F			213		
				1	2	3			sheet 1 of 4		

THIS FILE WAS ORIGINALLY CREATED IN THE PRO ENGINEER ENVIRONMENT AND ANY FUTURE REVISIONS TO THIS FILE MUST BE MADE IN THE PRO ENGINEER ENVIRONMENT

1 | 2

Pro/E

3 |

coge code 22526

4

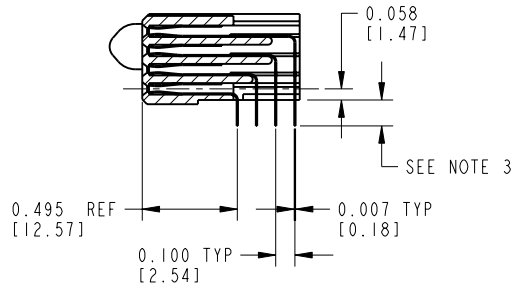
Tous droits strictement réservés. Reproduction ou communication o des liers interdite sous quelque forme que ce soit sans autorisation écrite du propriétaire. Propriete de c FCI. Droits de reproduction FCI.



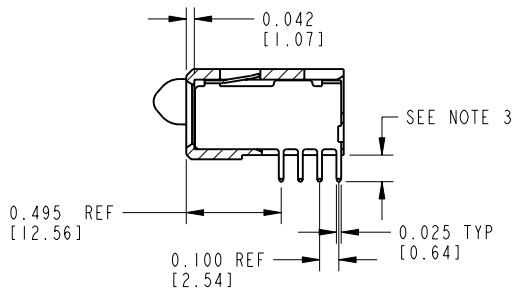
All rights strictly reserved. Reproduction or issue to third parties in any form, whatever is not permitted without written authority from the proprietor. Property of FCI. Copyright FCI.

PRODUCT NUMBER

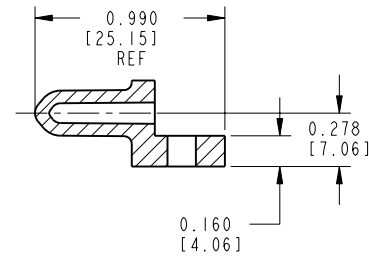
51427-001--  
NOTE: ②



SECTION C-C



SECTION B-B



SECTION A-A  
SCALE 1:1

CONFIDENTIAL

mat'l code				SEE NOTES		tolerances unless otherwise specified		CUSTOMER		FCI	
lfr	ecr no.	dr	date	linear	.XX±.01/.X±.3		COPY		www.fciconnect.com		
F					.XXX±.005/.X±.13		projection		title 2P + 24S + 2P R/A RECEPTALE		
				angles	.XXX±.0020/.XXX±.051		INCH/MM		product family PwrBlade code 213		
					0°±2°		scale 1:1		size dwg no 51427 sheet 2 of 4		
				dr	C. BAROT	01-18-99					
				enr	J. BROWN	02-18-00					
				chr	J. BROWN	01-18-99					
				appd	J. BROWN	02-21-00					
sheet index	revision sheet										

cage code 22526

Pro/E

PDM: Rev:F

STATUS: Released

Printed: Dec 20, 2010

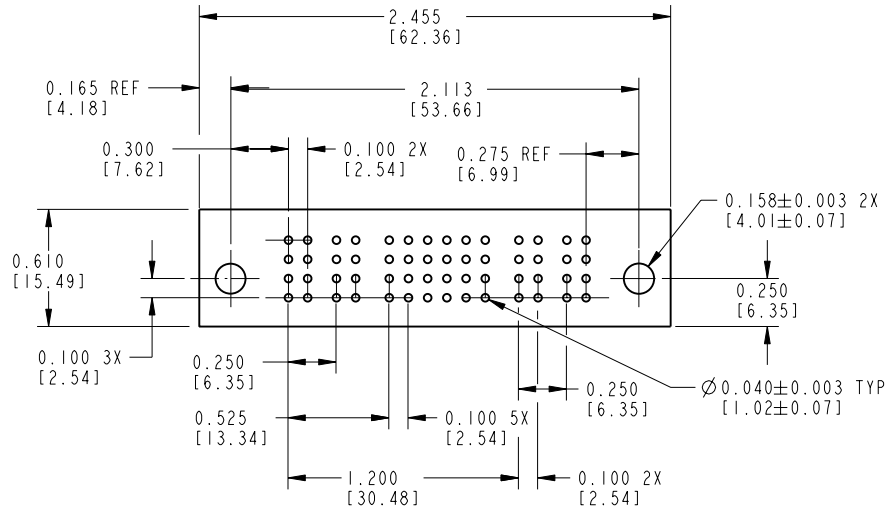
Tous droits strictement réservés. Reproduction ou communication o des liers interdite sous quelque forme que ce soit sans autorisation écrite du propriétaire. Propriete de c FCI. Droits de reproduction FCI.



All rights strictly reserved. Reproduction or issue to third parties in any form, whatever is not permitted without written authority from the proprietor. Property of FCI. Copyright FCI.

PRODUCT NUMBER

51427-001--  
NOTE: ②



RECOMMENDED PCB FOOTPRINT

SCALE 1:1

CONFIDENTIAL

mat'l code				SEE NOTES		tolerances unless otherwise specified		CUSTOMER		FCI	
lfr	ecr no.	dr	date	linear	.XX±.01/.X±.3	COPY		www.fciconnect.com		title	
F				angles	.XXX±.005/.X±.13	projection		2P + 24S +2P		R/A RECEPTALE	
				dr	.XXXX±.0020/.XXX±.051	INCH/MM		product family		code	
				engr	0°±2°	scale		PwrBlade		213	
				chr		1:1		size		sheet	
				appd				dwg no		3 of 4	
sheet index		revision sheet						A		51427	

cage code 22526

Pro/E

PDM: Rev:F

STATUS: Released

Printed: Dec 20, 2010

Tous droits strictement reserves. Reproduction ou communication o des liers interdite sous quelque forme que ce soit sans autorisation ecrite du proprietaire. Propriete de c FCI. Droits de reproduction FCI.



All rights strictly reserved. Reproduction or issue to third parties in any form whatever is not permitted without written authority from the proprietor. Property of FCI. Copyright FCI.

1 | 2

3 |

4

PRODUCT NUMBER

51427-001--  
NOTE: ②

CONNECTOR NOTES:

- HOUSING MATERIAL: GLASS FILLED HIGH TEMP THERMOPLASTIC, UL94V-0  
SIGNAL CONTACT MATERIAL: COPPER ALLOY  
POWER CONTACT MATERIAL: COPPER ALLOY
- 51427-001; 51427-001LF; 51427-001GLF PLATING SPEC. SEE PRINT: 10064183
- TAIL LENGTH  
0.135 ± .020 [3.43 ± .25]
- MANUFACTURER NAME, P/N, AND DATE CODE TO APPEAR ON THIS SURFACE.

PCB NOTES:

- ALL DIMENSIONS ARE BASIC UNLESS OTHERWISE SPECIFIED
- ALL THROUGH HOLES ARE LOCATED WITH A TRUE POSITION OF 0.004"
- ALL DIAMETERS ARE FINISHED HOLE SIZES
- Ø 0.158" THROUGH HOLES ARE UNPLATED

A

A

CONFIDENTIAL

mat'l code		SEE NOTES		tolerances unless otherwise specified		CUSTOMER		FCI		www.fciconnect.com	
ltr	ecn no.	dr	date	linear	.XX ± .01 / .X ± .3		COPY		projection	title	
F					.XXX ± .005 / .X ± .13		INCH/MM			2P + 24S + 2P R/A RECEPTALE	
				angles	.XXX ± .0020 / .XXX ± .051		scale		product family		code
					0° ± 2°		1:1		PwrBlade		213
				dr	C. BAROT	01-18-99			size		sheet
				enr	J. BROWN	02-18-00			dwg no		4
				chr	J. BROWN	01-18-99			A		
				appd	J. BROWN	02-21-00			51427		
sheet index	revision sheet										

B

B

1 | 2

Pro/E

3 |

cage code 22526

4