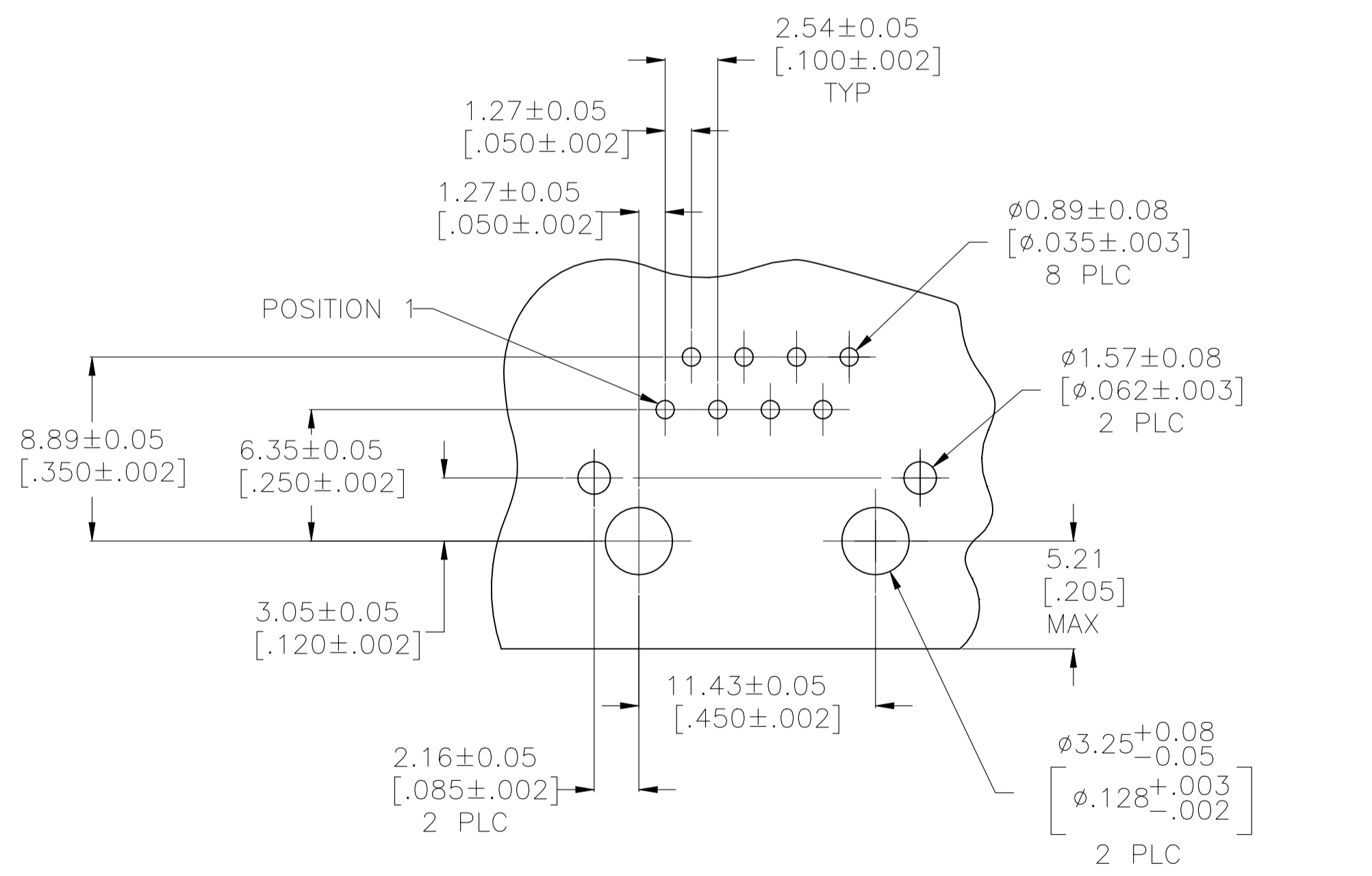
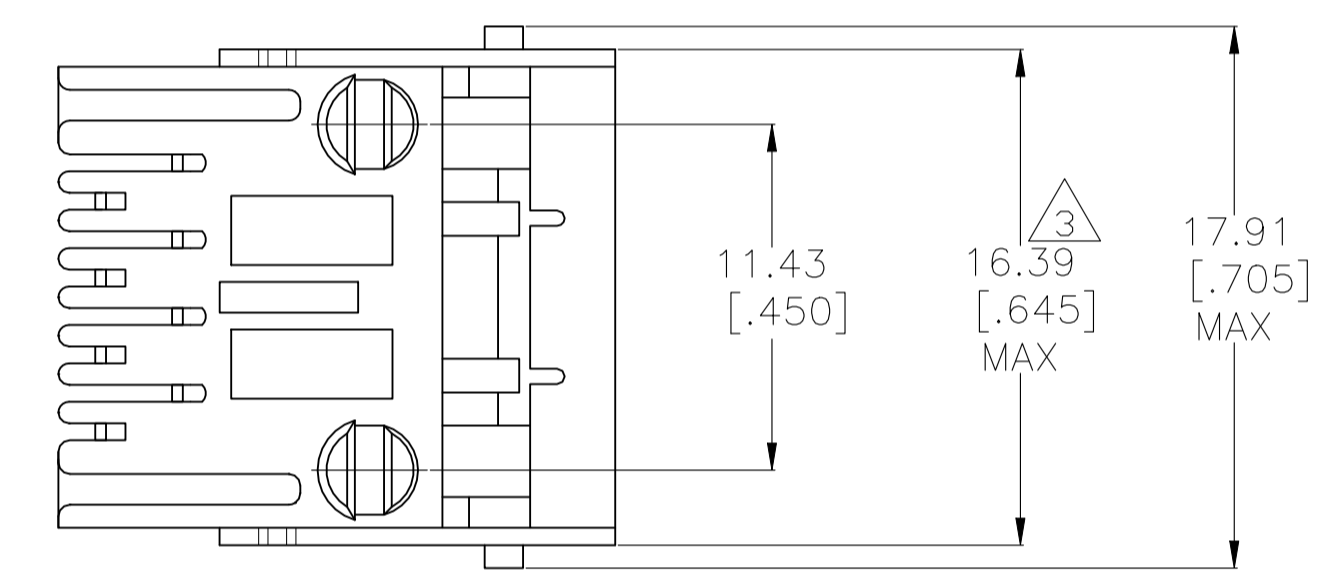
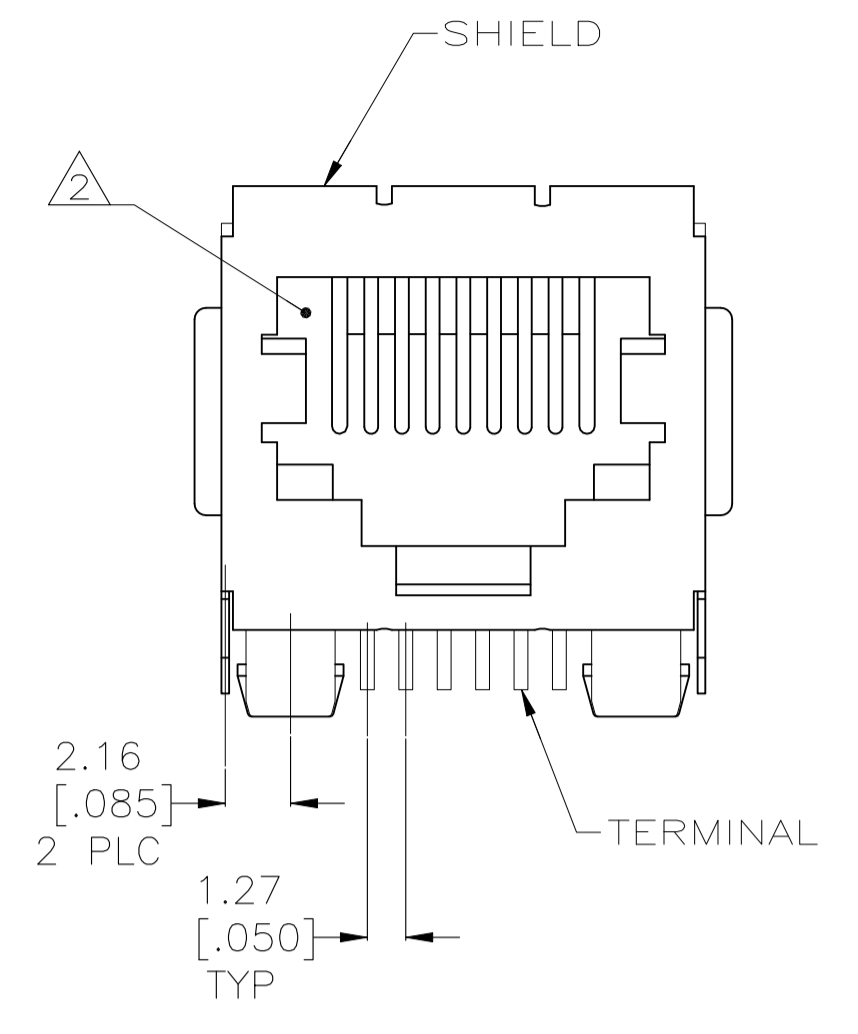
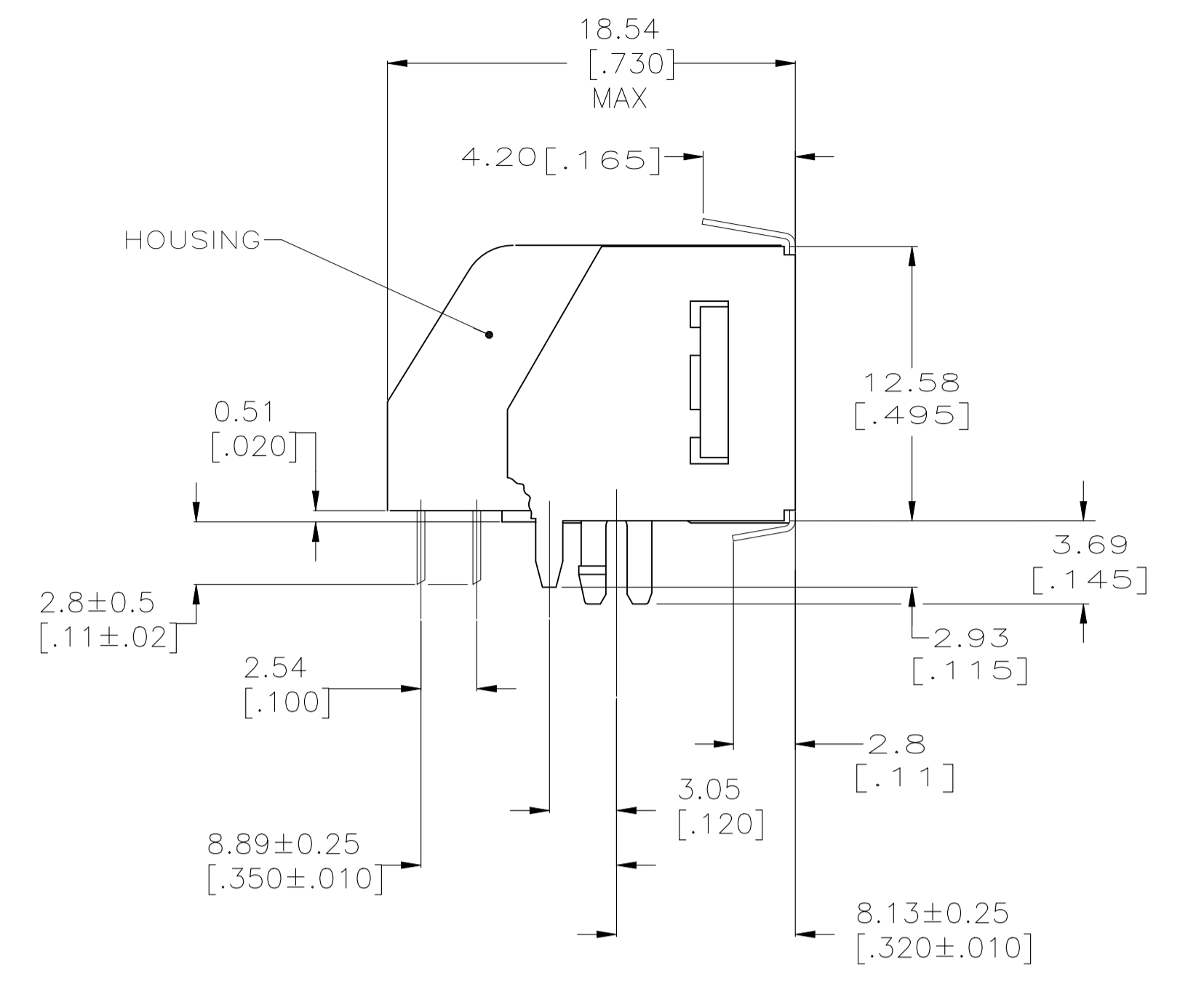
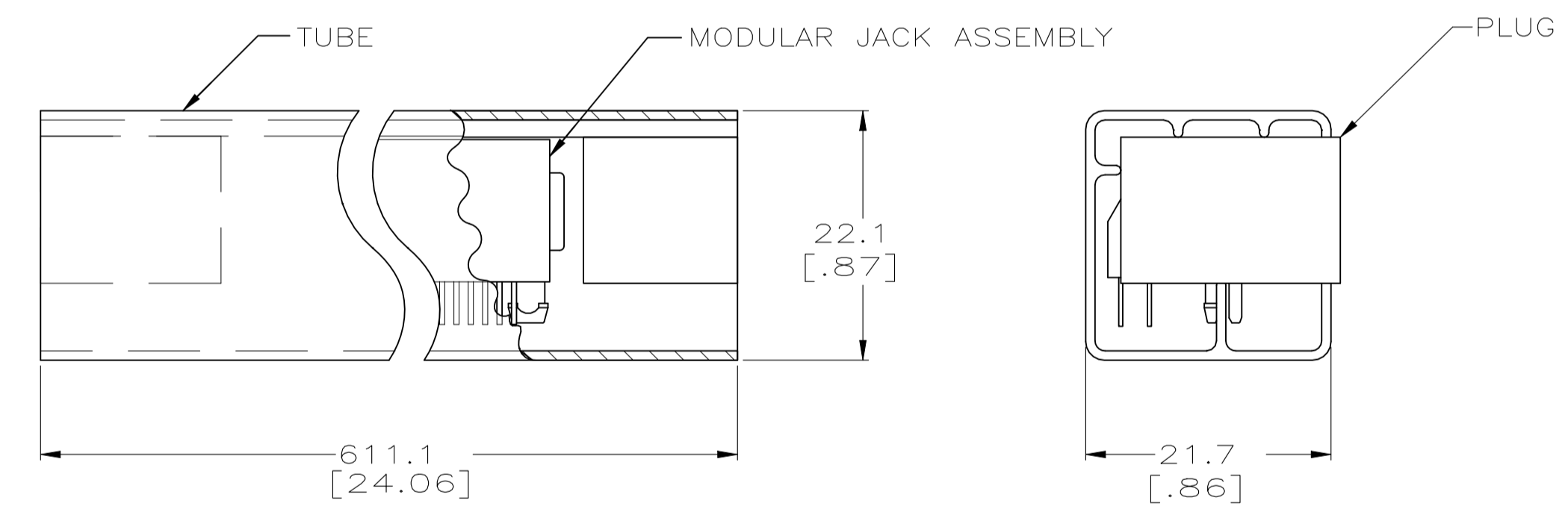


REVISIONS					
REV	DESCRIPTION	DATE	BY	CHK	APPV
B1	REVISED PER ECN-22-180673	20OCT2022	AK	SZ	



RECOMMENDED PRINTED CIRCUIT BOARD LAYOUT (COMPONENT SIDE)



- MATERIAL:  
HOUSING - HTN MOLDING COMPOUND, UL 94V-0, BLACK  
TERMINAL - 0.36[.014] THICK PHOS-BRONZE PLATED WITH 1.27µm[.000050] MINIMUM THICK HARD GOLD IN LOCALIZED GOLD PLATE AREA AND 3.81µm[.000150] MINIMUM THICK MATTE TIN IN SOLDER AREA OVER 1.27µm[.000050] THICK MINIMUM NICKEL UNDERPLATE.  
SHIELD - 0.25[.010] THICK COPPER ALLOY PLATED WITH 3.0µm[.000120] MINIMUM REFLOWED TIN
- CAVITY CONFORMS TO FCC RULES AND REGULATIONS PART 68, SUBPART F.
- DIMENSION MEASURED ALONG FRONT EDGE OF MATING FACE
- PACKAGED 31 ASSEMBLIES PER TUBE WITH BOTH ENDS PLUGGED (SEE DETAIL A)

OBSOLETE 6368018-1 PART NUMBER

THIS DRAWING IS A CONTROLLED DOCUMENT.		DIN L. VARELA - DOCKS 15JUN2005		TE Connectivity	
DIMENSIONS: mm [INCHES]		CHK J. WESTMAN 15JUN2005		APVD S. FLICKINGER 15JUN2005	
TOLERANCES UNLESS OTHERWISE SPECIFIED:		NAME		MODULAR JACK ASSEMBLY, 8 POSITION, RIGHT ANGLE, LOW PROFILE, SHIELDED, PANEL GROUND, LOW INSERT FORCE (IR)	
0 PLC ± -		PRODUCT SPEC		108-1163	
1 PLC ± -		APPLICATION SPEC		114-2048	
2 PLC ± 0.13[.005]		SIZE		A1	
3 PLC ± -		CAGE CODE		6368018	
4 PLC ± -		DRAWING NO		-	
ANGLES ± -		WEIGHT		0.000000	
MATERIAL SEE NOTE 1		FINISH SEE NOTE 1		CUSTOMER DRAWING	
		SCALE		4:1	
		SHEET		1 of 1	
		REV		B1	