

DO NOT SCALE FROM THIS PRINT

LCW-1XX-XX-X-X-XXX-XX

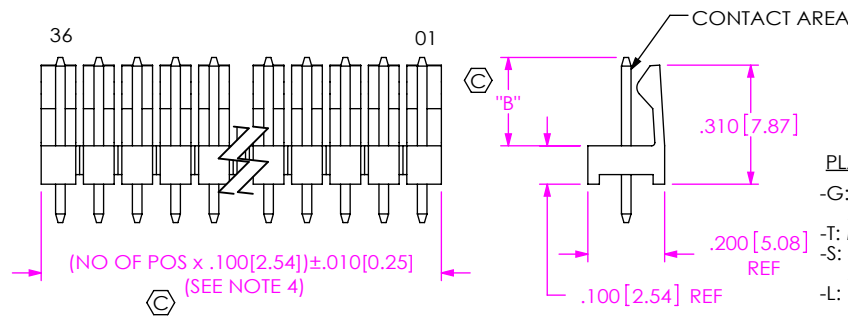


FIG 1
LCW-1XX-X-XX-S-230 SHOWN

No OF POSITIONS

-01 THRU -36

LEAD STYLE
(SEE TABLE 2)

PLATING SPECIFICATION

- G: 10µ" SELECTIVE GOLD IN CONTACT AREA, 3µ" SELECTIVE GOLD ON TAIL.
- T: MATTE TIN ON CONTACT AND TAIL.
- S: 30µ" SELECTIVE GOLD IN CONTACT AREA, MATTE TIN ON TAIL.
- L: 10µ" SELECTIVE GOLD IN CONTACT AREA, MATTE TIN ON TAIL.
- H: 30µ" SELECTIVE GOLD IN CONTACT AREA, 3µ" SELECTIVE GOLD ON TAIL.
- F: 3µ" SELECTIVE GOLD IN CONTACT AREA, MATTE TIN ON TAIL.

LEAD FORM SPECIFICATION

- BLANK: SEE FIG 1
- RA: SEE FIG 3
- RE: SEE FIG 3
- RP: SEE FIG 3 & IN-PROCESS
- PR: SEE FIG 4 & IN-PROCESS
- RR: SEE FIG 4
- LL: SEE FIG 5 (N/A ON 1 & 2 POSITIONS OR ANY RX OR XR LEAD STYLES)
- XX: INDICATES POSITION TO BE OMITTED.
- POST LENGTH "B"
- 230: .230[5.84]
- 300: .300[7.62]
- (-300 NOT AVAILABLE IN -7, -16, OR -17 LEAD STYLES)

BODY SPECIFICATION

- S: SINGLE (USE LCW-36-S)
- M: SINGLE MODIFIED, SEE FIG 2 (USE LCW-36-S)

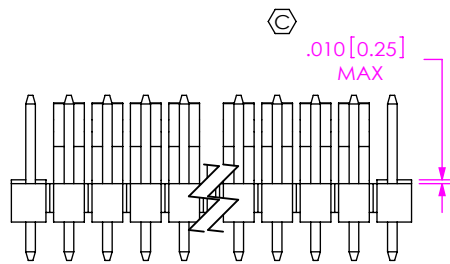


FIG 2
-M: SINGLE MODIFIED
LCW-1XX-X-XX-M-XXX SHOWN
(DIFFERENT AS SHOWN, OTHERWISE SAME AS FIG 1)

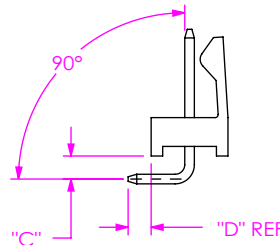


FIG 3
-RA, -RE, AND -RP OPTION
LCW-1XX-X-XX-S-XXX-RA SHOWN
(DIFFERENT AS SHOWN, OTHERWISE SAME AS FIG 1)
(SEE TABLE 3)

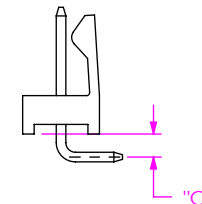
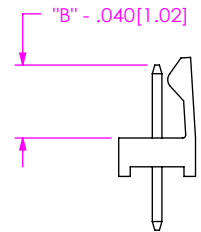


FIG 4
-PR AND -RR OPTION
LCW-1XX-X-XX-S-XXX-RR SHOWN
(DIFFERENT AS SHOWN, OTHERWISE SAME AS FIG 3)
(SEE TABLE 3)



IN-PROCESS
FOR RP & PR ONLY

TABLE 2		
LEAD STYLE	TERMINAL	OVERALL LENGTH
-07 (1)	T-1S6-07-XXX-2	.430 [10.92]
-08 (1) (2)	T-1S6-08-XXX-2	.530 [13.46]
-09	T-1S6-09-XXX-2	.730 [18.54]
-10	T-1S6-10-XXX-2	.830 [21.08]
-11	T-1S6-11-XXX-2	.930 [23.62]
-12	T-1S6-12-XXX-2	1.030 [26.16]
-13	T-1S6-13-XXX-2	1.230 [31.24]
-14	T-1S6-14-XXX-2	1.430 [36.32]
-15 (1) (2)	T-1S6-15-XXX-2	.630 [16.00]
-16 (1)	T-1S6-16-XXX-2	.445 [11.30]
-17 (1)	T-1S6-17-XXX-2	.480 [12.19]
-19	T-1S6-19-XXX-2	1.330 [33.78]
-20	T-1S6-20-XXX-2	1.130 [28.70]

(1) -LL AVAILABLE IN .230[5.84] POST
(2) -LL AVAILABLE IN .300[7.62] POST

"D" = OVERALL LENGTH - "B" - "C" - .180

TABLE 3	
LEAD FORM SPECIFICATION	"C"
-RA	.060[1.52] ± .010[0.25]
-RE	.160[4.06] ± .010[0.25]
-RP	.030[0.76] ± .010[0.25]
-PR	.030[0.76] ± .010[0.25]
-RR	.060[1.52] ± .010[0.25]

NOTES:

1. Ⓢ REPRESENTS A CRITICAL DIMENSION.
2. MINIMUM PUSHOUT FORCE: 3 LBS.
3. MAXIMUM HEIGHT VARIATION BETWEEN ANY TWO PINS: .010[0.25]
4. TOLERANCE FOR THIS DIMENSION IS +.005/-0.015 FOR 36 POSITION PARTS.
5. MAXIMUM CUT FLASH: .015[0.38].

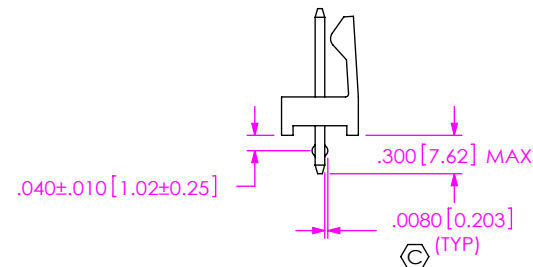
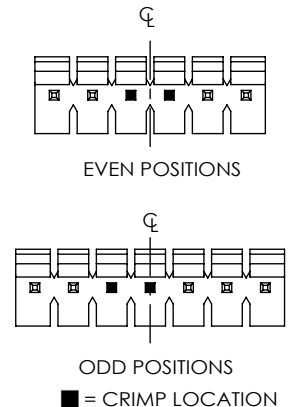


FIG 5
-LL: LOCKING LEAD
LCW-1XX-X-XX-S-XXX-LL SHOWN
(DIFFERENT AS SHOWN, OTHERWISE SAME AS FIG 1)



UNLESS OTHERWISE SPECIFIED, DIMENSIONS ARE IN INCHES. TOLERANCES ARE:
DECIMALS ANGLES
.XX: ±.01 [0.3] 2°
.XXX: ±.005 [0.13]
.XXXX: ±.0020 [0.051]

PROPRIETARY NOTE
THIS DOCUMENT CONTAINS CONFIDENTIAL AND PROPRIETARY INFORMATION AND ALL DESIGN, MANUFACTURING, REPRODUCTION, USE, PATENT RIGHTS AND SALES RIGHTS ARE EXPRESSLY RESERVED BY SAMTEC, INC. THIS DOCUMENT SHALL NOT BE DISCLOSED, IN WHOLE OR PART, TO ANY UNAUTHORIZED PERSON OR ENTITY NOR REPRODUCED, TRANSFERRED OR INCORPORATED IN ANY OTHER PROJECT IN ANY MANNER WITHOUT THE EXPRESS WRITTEN CONSENT OF SAMTEC, INC.

MATERIAL: DO NOT SCALE DRAWING SHEET SCALE: 2:1
INSULATOR: PBT, UL 94 VO, COLOR: BLACK
TERMINAL: PHOS BRONZE

DESCRIPTION: LOCK CLIP WIREWRAP ASSEMBLY
DWG. NO. LCW-1XX-XX-X-X-XXX-XX
BY: L WILLIAMS 01/11/1985 SHEET 1 OF 1

samtec
520 PARK EAST BLVD, NEW ALBANY, IN 47150
PHONE: 812-944-6733 FAX: 812-948-5047
e-Mail info@SAMTEC.com code 55322