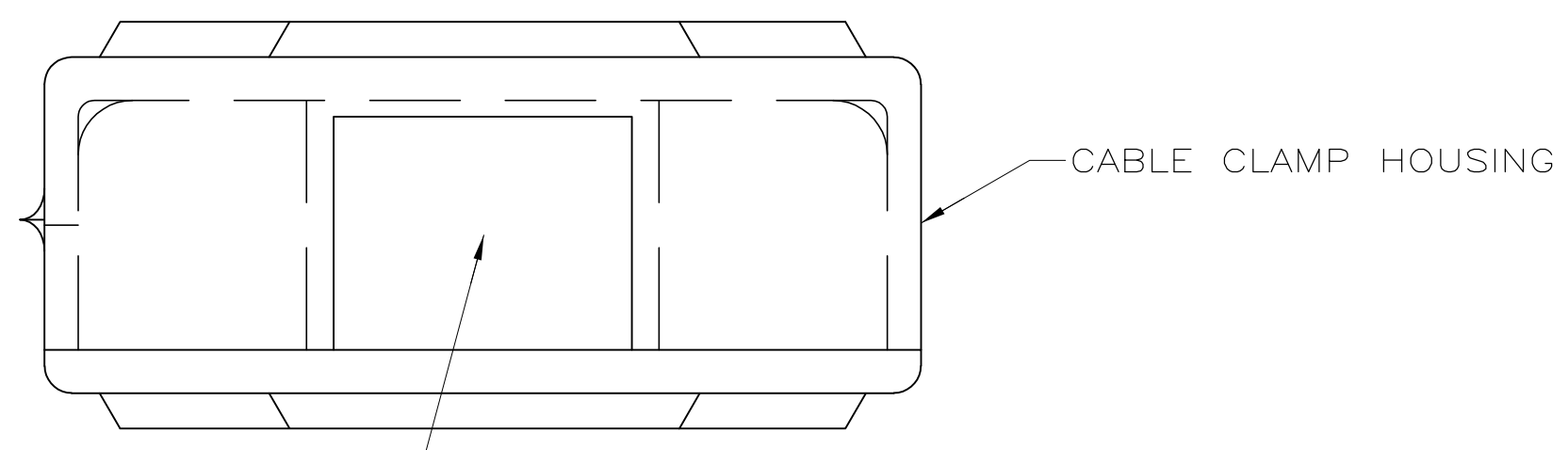
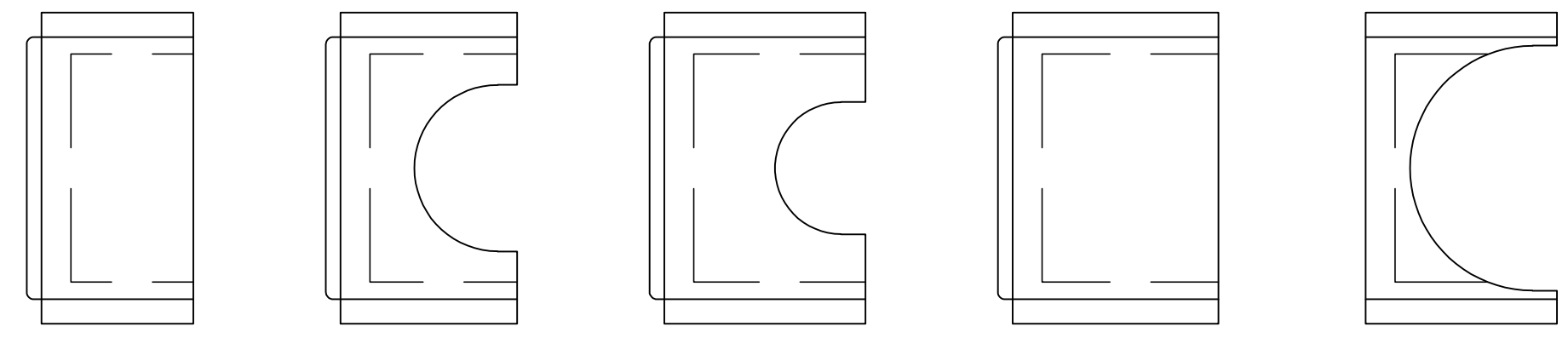
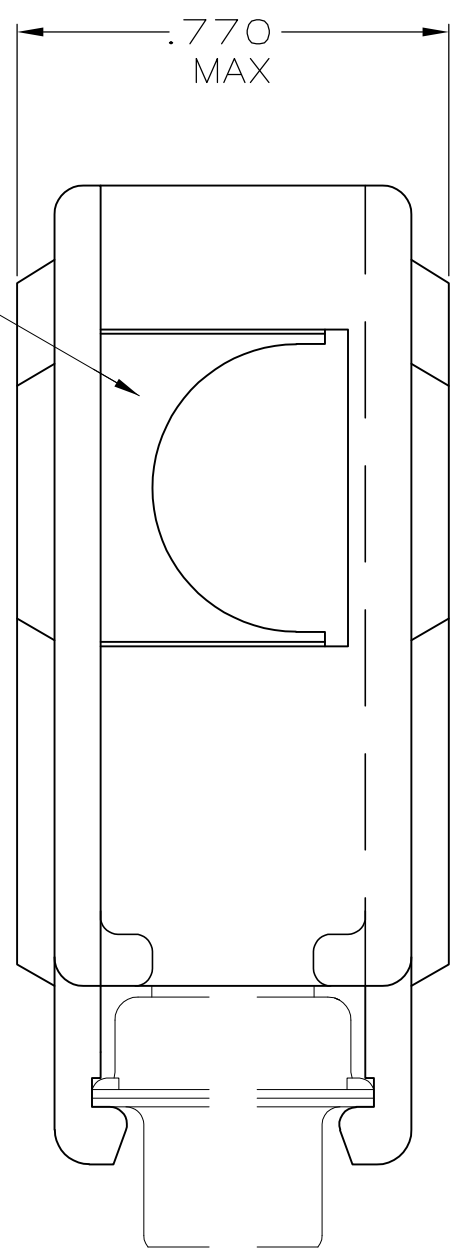
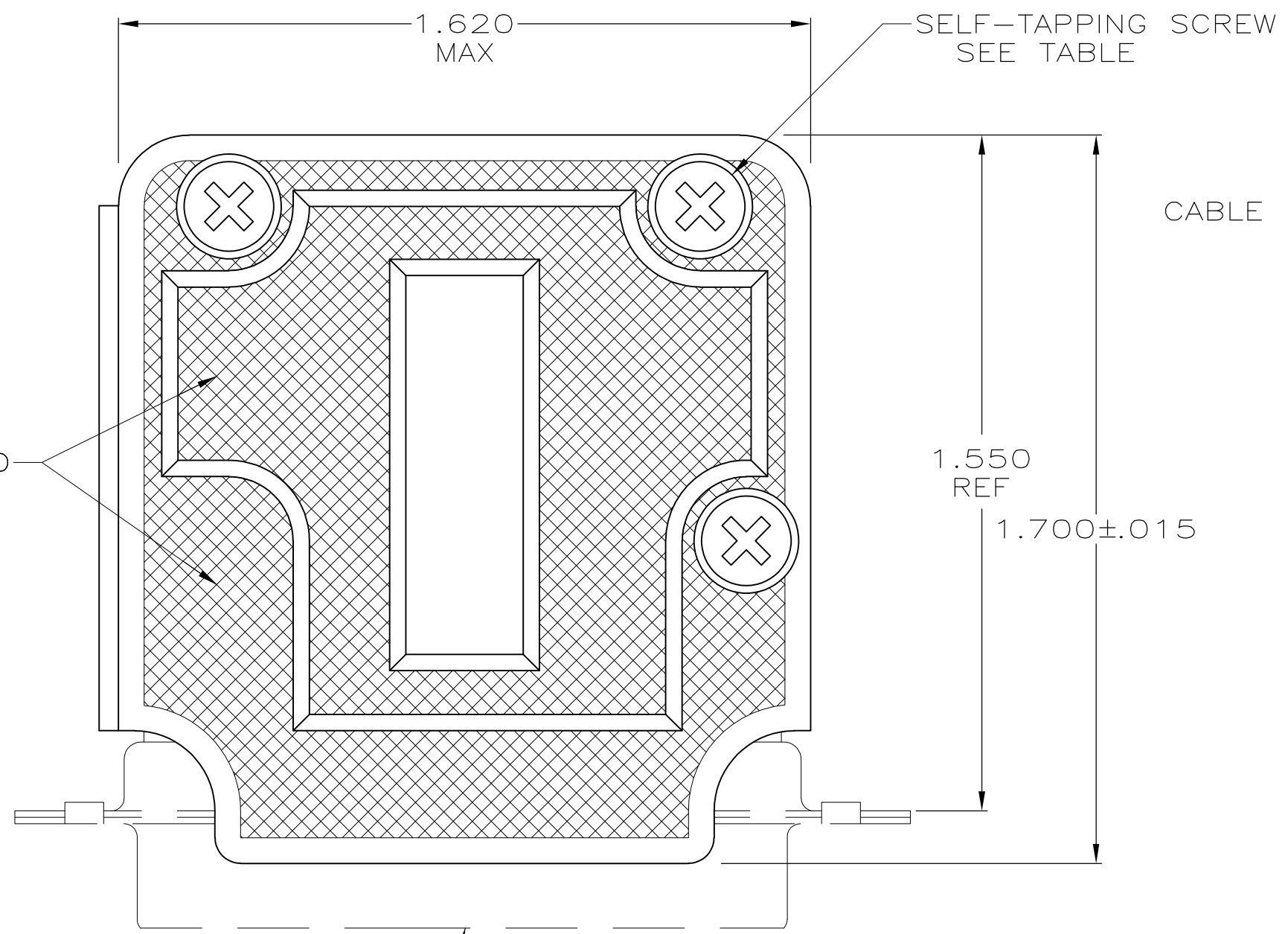


THIS DRAWING IS UNPUBLISHED. RELEASED FOR PUBLICATION
 © COPYRIGHT - By - ALL RIGHTS RESERVED.

LOC		DIST		REVISIONS			
P	LTR	DESCRIPTION		DATE	DWN	APVD	
	F1	REVISED PER ECO-11-004835		11MAR11	RK	HMR	



- PARTS PACKAGED UNASSEMBLED.
 - CABLE GATES ARE INTERCHANGEABLE ALLOWING 90° & 180° CABLE EXIT.
- ⚠ COMPONENTS INDIVIDUALLY BULK PACKED AND SHIPPED AS A UNIT PACKAGE KIT.



.195 DIA CABLE REF

.360 DIA CABLE REF

.215 DIA CABLE REF

BLANK GATE

.390 DIA CABLE REF

GATES

OBSELETE	VERSION	PACKAGING	PART NUMBER
OBSELETE	SLOTTED	⚠	207345-4
OBSELETE	SLOTTED	AS SHOWN	207345-3
	CROSS-RECESSED	⚠	207345-2
	CROSS-RECESSED	AS SHOWN	207345-1

THIS DRAWING IS A CONTROLLED DOCUMENT.

DWN	S. WELDON	9-16-86
CHK	C. RICHARD	9-16-86
APVD	S. SCHUFERLY	9-16-86

TE Connectivity

CABLE CLAMP KIT, SIZE 3, ONE PIECE, 90DEG & 180DEG EXIT, AMPLIMITE®

SIZE	CAGE CODE	DRAWING NO	RESTRICTED TO
A2	00779	C-207345	-

SCALE NTS SHEET 1 of 1 REV F1