

TOSHIBA Bi-CMOS Integrated Circuit Silicon Monolithic

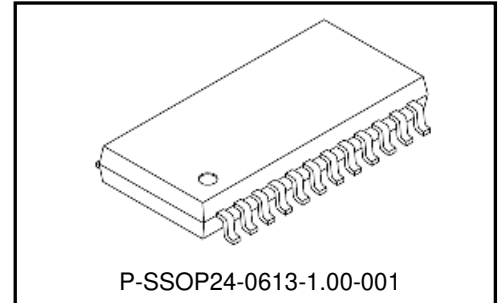
# TB6586BFG

## Three-Phase Full-Wave Brushless Motor Controller

The TB6586BFG is a three-phase full-wave brushless motor controller developed for use in motor fans.

### Features

- Designed for low-speed motor operation:  
Minimum ON duty = 0.6  $\mu$ s (typ.)
- Upper-phase PWM control
- Built-in triangular-wave generator
- Support of a bootstrap circuit
- Built-in Hall amplifier (support of a Hall element)
- Selectable 120°/150° energization
- Built-in lead angle control function
- Overcurrent protection signal input pin ( $V_{RS} = 0.5$  V (typ.))
- Built-in regulator ( $V_{refout} = 5$  V (typ.), 35 mA (max))
- Operating supply voltage range:  $V_{CC} = 6.5$  to 16.5 V
- Pulses-per-revolution output:  
FGC = High: 1 pulse/electrical angle: 360°  
FGC = Low: 3 pulses/electrical angle: 360°

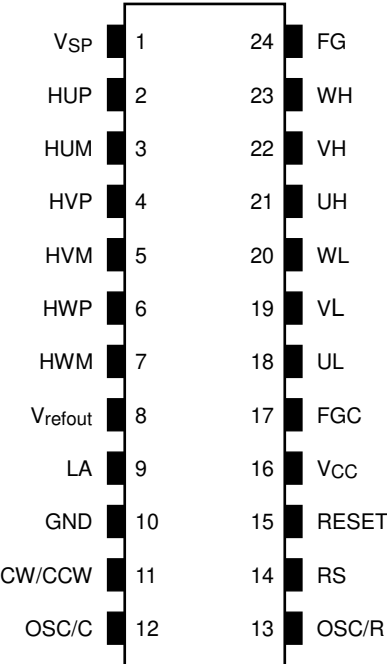


Weight: 0.36 g (typ.)

## Pin Description

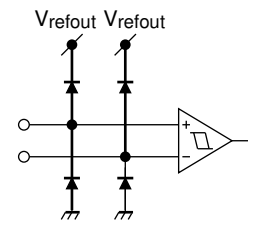
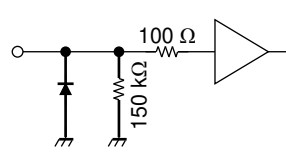
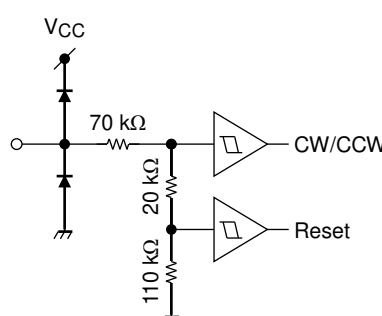
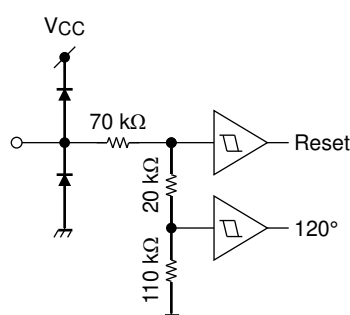
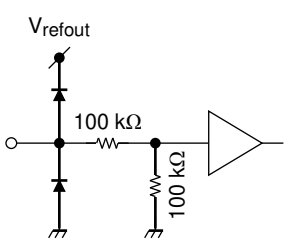
Pin No.	Symbol	Description
1	V <sub>SP</sub>	Speed control input
2	HUP	U-phase Hall signal input (+) pin
3	HUM	U-phase Hall signal input (-) pin
4	HVP	V-phase Hall signal input (+) pin
5	HVM	V-phase Hall signal input (-) pin
6	HWP	W-phase Hall signal input (+) pin
7	HWM	W-phase Hall signal input (-) pin
8	V <sub>refout</sub>	Outputs reference voltage signal (5 V / 35 mA)
9	LA	Lead angle setting signal input pin (30° / 4 bits)
10	GND	Ground pin
11	CW/CCW	Rotation direction signal input pin
12	OSC/C	Connect to capacitor for PWM oscillator
13	OSC/R	Connect to resistor for PWM oscillator
14	RS	Overcurrent protection (0.5 V)
15	RESET	Energization width toggle pin (Low: 150°, High: Reset, 6.35 V: 120°)
16	V <sub>CC</sub>	Power supply
17	FGC	FG pulse count select (High = 1 ppr; Low or open = 3 ppr)
18	UL	U-phase output pin (Low side)
19	VL	V-phase output pin (Low side)
20	WL	W-phase output pin (Low side)
21	UH	U-phase output pin (High side)
22	VH	V-phase output pin (High side)
23	WH	W-phase output pin (High side)
24	FG	Pulses-per-revolution output

**Pin Layout**



### Input/Output Equivalent Circuits

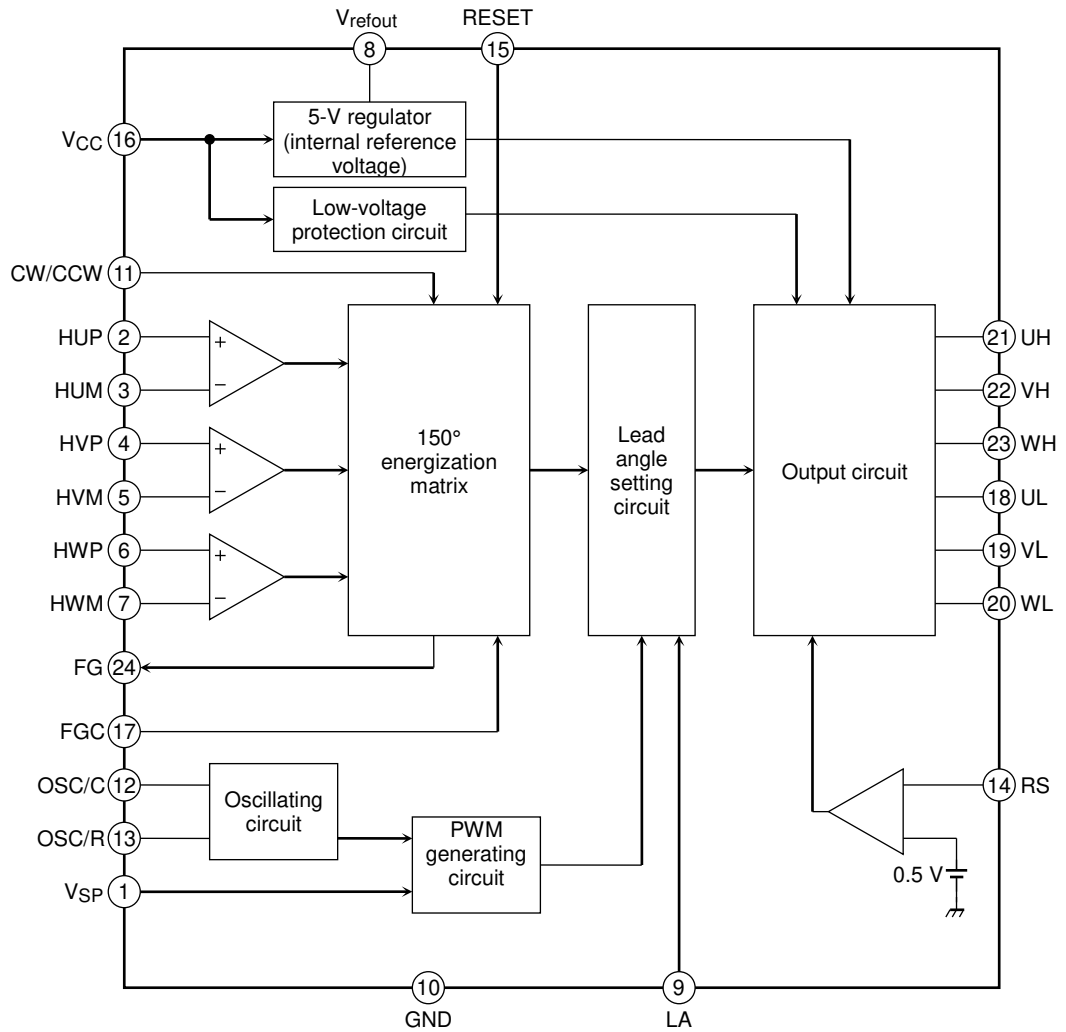
The equivalent circuit diagrams may be simplified or some parts of them may be omitted for explanatory purposes.

Pin Description	Symbol	Input/Output Signal	Input/Output Internal Circuit
Positional signal input pin	HUP HUM HVP HVM HWP HWM	Analog/Digital  Hysteresis $\pm 7.5$ mV (typ.) Digital filter: $1.6 \mu\text{s}$ (typ.)	
Speed control signal input pin	VSP	Analog  Input range 0 to 7 V	
Rotation direction signal input pin  L: Forward (CW) H: Reverse (CCW)	CW/CCW	Digital  L: 0.8 V (max) H: $V_{\text{refout}} - 1$ V (min) Test input If CW/CCW = 6.35 V (typ.) or higher, the system resets Hysteresis 150 mV (typ.)	
Reset input  L: 150° energization H: Reset	RESET	Digital  L: 0.8 V (max) H: $V_{\text{refout}} - 1$ V (min) If RESET = 6.35 V (typ.) or higher, then 120° energization drive is selected. Hysteresis 150 mV (typ.)  During a reset: Output OFF (all phases Low). The internal counter continues to operate.	
Lead angle setting signal input	LA	Analog  Input range 0 to 5.0 V ( $V_{\text{refout}}$ )  Electrical angle 0° to 28° can be divided into 16 by 4-bit data. Lead angle 0° : LA = 0 V (GND) Lead angle 28° : LA = 5 V ( $V_{\text{refout}}$ )	

Pin Description	Symbol	Input/Output Signal	Input/Output Internal Circuit
Overcurrent protection signal input	RS	Analog Analog filter 0.5 $\mu$ s (typ.) If RS > 0.5 V (typ.), UL, VL and WL pin goes low (released at carrier cycle)	
FG pulse count select	FGC	Digital L: 0.8 V (max) H: Vrefout - 1 V (min)  Low or Open: Three pulses/electrical angle: 360° High: One pulse/electrical angle: 360°	
Pulses-per-revolution output	FG	Digital Push-pull output ( $\pm$ 2 mA (max))	
Reference voltage signal output pin	Vrefout	5.0 $\pm$ 0.5 V (35 mA) 5.0 $\pm$ 0.3 V (15 mA)	
Energization signal output	UH UL VH VL WH WL	Push-pull output ( $\pm$ 2 mA (max))	

## Block Diagram

In the block diagram, part of the functional blocks or constants may be omitted or simplified for explanatory purposes.



## Absolute Maximum Ratings (Ta = 25°C)

Characteristics	Symbol	Rating	Unit
Supply voltage	V <sub>CC</sub>	18	V
Input voltage	V <sub>IN1</sub>	-0.3 to 8 (Note 1)	V
	V <sub>IN2</sub>	-0.3 to 8.5 (Note 2)	
	V <sub>IN3</sub>	-0.3 to V <sub>refout</sub> + 0.3 (Note 3)	
Energization output current	I <sub>OUT</sub>	2	mA
Power dissipation	P <sub>D</sub>	0.8 (Note 4)	W
		1.0 (Note 5)	
Operating temperature	T <sub>opr</sub>	-30 to 85	°C
Storage temperature	T <sub>stg</sub>	-55 to 150	

Note 1: CW/CCW, RESET

Note 2: V<sub>SP</sub>

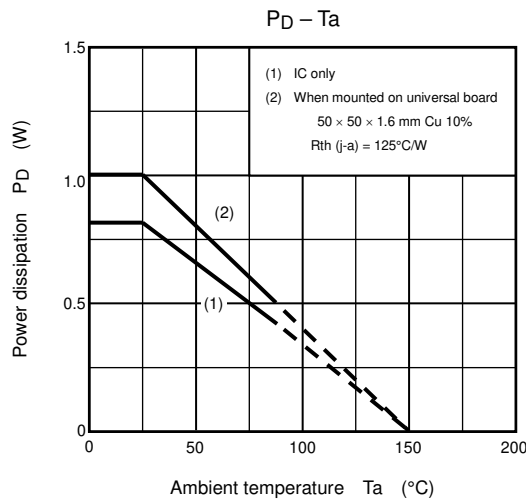
Note 3: LA, FGC

Note 4: Without a heatsink

Note 5: When mounted on a universal board (50 × 50 × 1.6 mm, Cu 10%)

## Operating Ranges (Ta = 25°C)

Characteristics	Symbol	Min	Typ.	Max	Unit
Supply voltage	V <sub>CC</sub>	6.5	15	16.5	V
Oscillation frequency	F <sub>osc</sub>	2	5	8	MHz



### Electrical Characteristics (unless otherwise specified Ta = 25°C, Vcc = 15 V)

Characteristics		Symbol	Test Condition	Min	Typ.	Max	Unit
Supply current		I <sub>CC</sub>	V <sub>refout</sub> = OPEN, OSC/C = 390 pF, OSC/R = 9.1 kΩ	2.0	5.5	10	mA
Input current	I <sub>IN</sub> (LA)	V <sub>IN</sub> = 5 V LA		—	25	50	μA
	I <sub>IN</sub> (SP)	V <sub>IN</sub> = 5 V V <sub>SP</sub>		—	35	70	
	I <sub>IN</sub> (RESET)	V <sub>IN</sub> = 5 V RESET		—	25	50	
	I <sub>IN</sub> (CW)	V <sub>IN</sub> = 5 V CW/CCW		—	25	50	
	I <sub>IN</sub> (FGC)	V <sub>IN</sub> = 5 V FGC		—	25	50	
	I <sub>IN</sub> (RS)	V <sub>IN</sub> = 0 V RS		—	-25	-50	
Input voltage	V <sub>IN</sub> (CW/CCW)	RST	System reset	6.0	6.35	7.1	V
		High	CCW (Reverse)	V <sub>refout</sub> - 1	—	V <sub>refout</sub>	
		Low	CW (Forward)	0	—	0.8	
	V <sub>IN</sub> (RESET)	RST	120° energization	6.0	6.35	7.1	V
		High	Output off reset	2.2	—	V <sub>refout</sub>	
		Low	150° energization	0	—	0.8	
	V <sub>SP</sub>	H	PWM ON duty 95%	5.1	5.4	5.7	V
		M	Refresh → Start motor operation.	1.8	2.1	2.4	
		L	Energization OFF → Refresh	0.7	1.0	1.3	
Hall element input	Input sensitivity	V <sub>S</sub>	Differential input	40	—	—	mVpp
	Common mode	V <sub>W</sub>		1.5	—	3.5	V
	Input hysteresis	V <sub>H</sub> (1)	(Note)	±4.5	±7.5	±10.5	mV
Input hysteresis voltage		V <sub>H</sub> (2)	RESET, CW/CCW (Note)	—	0.15	—	V
Input delay		T <sub>RS</sub>	RS → Output Off. RS input: 0 V/ 2 V	—	1.2	—	μs
Output voltage	V <sub>OUT</sub> - H	I <sub>OUT</sub> = 2 mA		V <sub>refout</sub> - 0.8	V <sub>refout</sub> - 0.3	—	V
	V <sub>OUT</sub> - L	I <sub>OUT</sub> = 2 mA		—	0.3	0.8	
	V <sub>FG</sub> (H)	I <sub>OUT</sub> = 2 mA FG		4	—	—	
	V <sub>FG</sub> (L)	I <sub>OUT</sub> = 2 mA FG		—	—	1.0	
	V <sub>refout1</sub>	I <sub>OUT</sub> = 15 mA V <sub>refout</sub>		4.7	5.0	5.3	
	V <sub>refout2</sub>	I <sub>OUT</sub> = 35 mA V <sub>refout</sub>		4.5	5.0	5.3	
Output leakage current	I <sub>L</sub> (H)	V <sub>OUT</sub> = 0 V		—	0	1	μA
	I <sub>L</sub> (L)	V <sub>OUT</sub> = 5 V		—	0	1	
Electrical current detector		V <sub>RS</sub>	RS	0.46	0.5	0.54	V
Lead angle correction	T <sub>LA</sub> (0)	LA = 0 V or open, Hall IN = 100 Hz		—	0	—	°
	T <sub>LA</sub> (2.5)	LA = 2.5 V, Hall IN = 100 Hz		—	17	—	
	T <sub>LA</sub> (5)	LA = 5 V, Hall IN = 100 Hz		—	28	—	
V <sub>CC</sub> monitor	V <sub>CC</sub> (H)	Output start operation point		5.7	6.0	6.3	V
	V <sub>CC</sub> (L)	No output operation point		4.7	5.0	5.3	
	V <sub>H</sub> (4)	Input hysteresis width (Note)		—	1.0	—	
PWM oscillator frequency (carrier frequency)	F <sub>C</sub> (20)	OSC/C = 390 pF, OSC/R = 9.1 kΩ		18	20	22	kHz
	F <sub>C</sub> (18)	OSC/C = 390 pF, OSC/R = 10 kΩ		16.2	18	19.8	
Output duty	T <sub>on</sub> (max)	OSC/C = 390 pF, OSC/R = 9.1 kΩ		92	95	98	%
	T <sub>on</sub> (min)	OSC/C = 390 pF, OSC/R = 9.1 kΩ (Note)		—	0.6	—	μs

Note: Not tested in production



## Functional Description

### 1. Basic Operation

At startup, the motor runs at 120° energization. When the position detection signal reaches a revolution count of  $f_s = 5 \text{ Hz}$  or higher, the rotor position is extrapolated from the position detection signal and output is activated using the lead angle based on the LA signal.

Startup - 5 Hz: 120° energization

$$f_s = f_{osc} / (120 \times 2^5 \times 2^8)$$

5 Hz or higher: 120° energization or 150° energization \*

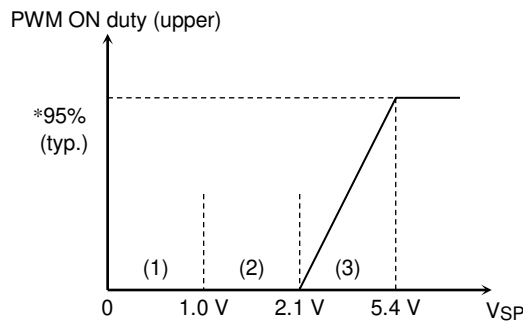
Approximately 5 Hz if  $f_{osc} = 5 \text{ MHz}$ .

- \*: At 5 Hz or higher, operation is performed in accordance with commands from RESET and LA pins. When the motor is running at 5 Hz or lower and in reverse (in accordance with the timing chart), it will be driven at 120° energization for a lead angle of 0°.

### 2. VSP Voltage Command Signal Function

- (1) When voltage instruction is input at  $V_{SP} \leq 1.0 \text{ V}$ :  
Output is turned off (gate block protection).
- (2) When voltage instruction is input at  $1.0 \text{ V} < V_{SP} \leq 2.1 \text{ V}$  (refresh operation):  
The lower transistor is turned on at a regular (carrier) cycle. (ON duty:  $T_{on} = 18/f_{osc}$ )
- (3) When a voltage instruction is input at  $V_{SP} > 2.1 \text{ V}$ :  
The drive signal is output using the energization method configured using the RESET pin.

Note: At startup, to charge the upper transistor gate power supply, turn the lower transistor on for a fixed time with  $1.0 \text{ V} < V_{SP} \leq 2.1 \text{ V}$ .



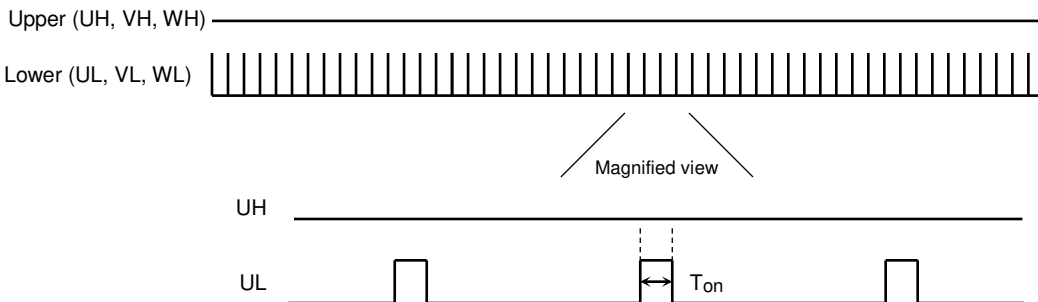
- \*: The maximum ON duty is  $T_{on} = 95\%$  (typ.) when  $V_{SP} = 5.4 \text{ V}$  (typ.).  
 Example: If  $f_{osc} = 5 \text{ MHz}$ , then ON time =  $48 \mu\text{s}$  (typ.) ( $f_c = 19.8 \text{ kHz}$ )  
 If  $f_{osc} = 4 \text{ MHz}$ , then ON time =  $60 \mu\text{s}$  (typ.) ( $f_c = 15.9 \text{ kHz}$ )

### 3. Function to Stabilize the Bootstrap Voltage

The product is equipped with a bootstrap capacitor charging function that supports the output level of the bootstrap method.

- (1) If the VSP input voltage is  $1.0 \text{ V} < V_{SP} \leq 2.1 \text{ V}$ , the ON signal based on the carrier cycle is output to the lower phase (UL, VL, WL) and the OFF signal (Low) is output to the upper phase (UH, VH, WH).

Output Waveform

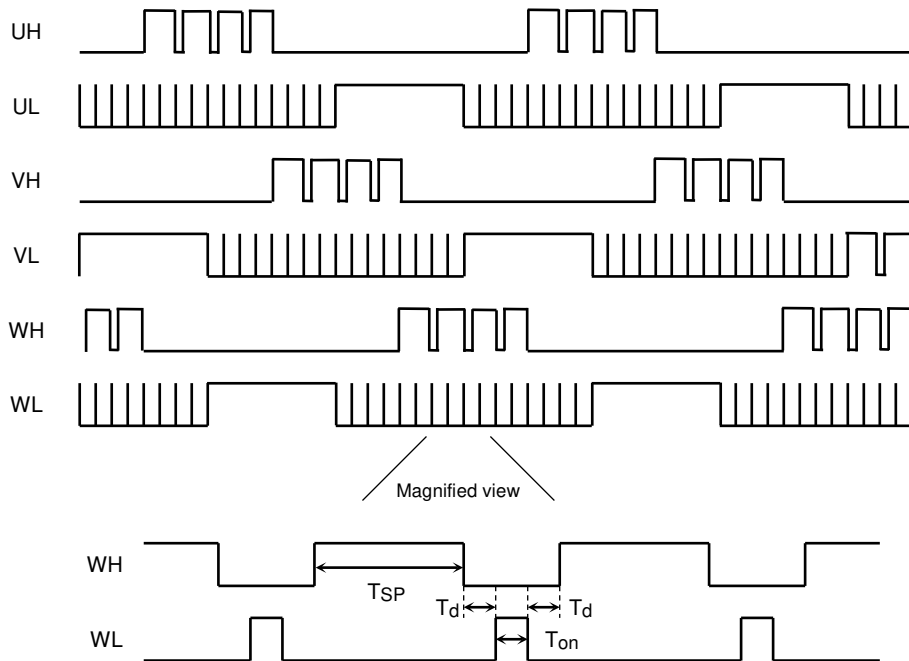


$$T_{on} = 18/f_{osc}$$

Example:  $f_{osc} = 5 \text{ MHz}$   $T_{on} = 3.6 \mu\text{s}$

- (2) If the VSP input voltage is  $2.1\text{ V} < V_{SP}$  and the Hall signal is 5 Hz or less, the upper phase (UH, VH, WH) will perform  $120^\circ$  energization at a PWM that complies with the VSP; and the lower phase (UL, VL, WL) will operate at  $120^\circ$  energization, and performing refresh operation based on the OFF timing. (The same drive is executed during reverse rotation as well.)

Example Output Waveform



$T_{SP}$ : Variable depending on the VSP (the figure above being applicable when  $V_{SP} = 5.4\text{ V}$  (typ.));

$T_{on} = 18/f_{osc}$ ;  $T_d = 18/f_{osc}$

\*: The lead angle correction (LA pin) function does not operate when the Hall signal is 5 Hz or less. The lead angle correction function also does not operate when in a reverse detection state.

#### 4. Correcting the Lead Angle

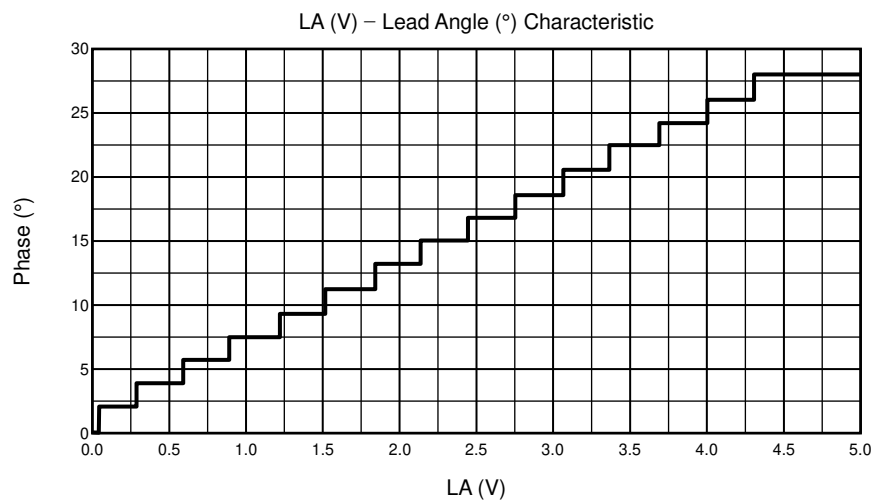
The lead angle can be corrected in the turn-on signal range from 0 to  $28^\circ$  in relation to the induced voltage. Analog input from the LA pin (0 V to 4.3 V divided by 16):

0 V =  $0^\circ$

4.3 V or higher =  $28^\circ$

Sample Evaluation Results

Steps	LA (V)	Lead Angle ( $^\circ$ )
1	0.00	0.00
2	0.05	1.93
3	0.28	3.79
4	0.59	5.65
5	0.89	7.54
6	1.21	9.43
7	1.52	11.29
8	1.83	13.15
9	2.14	15.08
10	2.45	16.87
11	2.75	18.73
12	3.06	20.66
13	3.37	22.55
14	3.68	24.37
15	3.99	26.16
16	4.30	28.09



## 5. Setting the Carrier Frequency

This function involves setting the triangular wave frequency (carrier frequency) necessary for generating PWM signals.

Carrier frequency:  $f_c = f_{osc}/252$  (Hz)

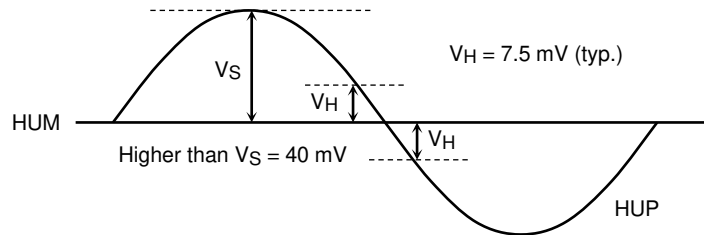
$f_{osc}$  = reference clock (CR oscillatory frequency)

Example: If  $f_{osc} = 5$  MHz, then  $f_c = 19.8$  kHz

If  $f_{osc} = 4$  MHz, then  $f_c = 15.9$  kHz

## 6. Position Detection Pin

The common-mode voltage range is  $V_W = 1.5$  to  $3.5$  V. The input hysteresis is  $V_H = 7.5$  mV (typ.).

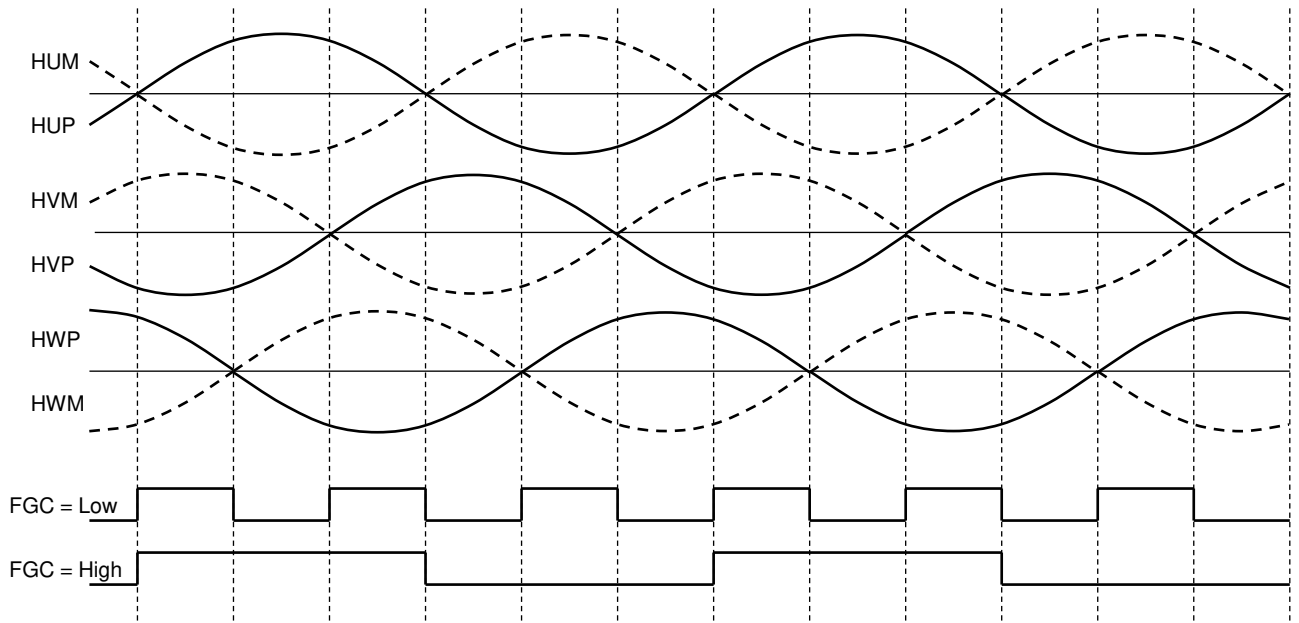


## 7. Pulses-Per Revolution Output

The number of pulses to be generated from the FG output is selectable from one or three pulses per electrical degree via the FGC input. When one pulse per electrical degree is selected, pulses are generated from the U-phase Hall signal. When three pulses per electrical degree is selected, pulses are generated by combining the rising edges of the U-, V- and W-phase Hall signals.

FGC	FG
High	One pulse/electrical angle
Low or open	Three pulses/electrical angle

## FG Signal Timing Chart



## 8. Protecting Input Pin

### (1) Overcurrent protection (RS Pin)

If the current converted a voltage into exceeds the internal reference voltage (0.5 V (typ.)), each output (UH, VH, WH) on the high side becomes a low and each output (UL, VL, WL) on the low side outputs a drive signal in accordance with the signal from the hall elements as shown on the timing chart.

Overcurrent protection is restored for each carrier cycle.

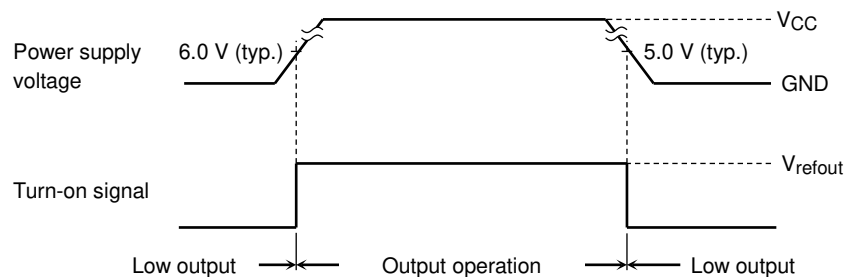
The pin is equipped with a filter (analog filter = 0.5  $\mu$ s (typ.)) that prevents malfunctioning due to external noise.

### (2) Position detection signal error protection

When the position detection signals are either all High, Low or Open, all the output is turned off (all phases Low). Anything else results in a restart.

### (3) Low power voltage protection (VCC power monitor)

If the operation voltage range is exceeded when the power is being turned on or off, all the output is turned Low to prevent short circuit damage to the power element. Also, if 2.1 V or higher is input via the VSP pin, and if the motor is not rotating (Hall signal = 5 Hz or less), then normal drive is restored after a refresh operation (1.5 ms (typ.)) is performed. However, operations cannot be guaranteed during a power restoration as the circuitry will be unstable when the power is turned on.



### (4) Output pulse width restriction

To prevent damage to the output driver (externally attached), the drive output signals (UH, VH, WH, UL, VL, WL) are restricted from being output at a pulse width of 0.4  $\mu$ s or less.

### (5) Reset circuit

When 2.2 V (min) or more is input to the RESET pin, a reset will be performed with all output phases being turned off (i.e., all phases Low). Output is also turned off if 6.35 V (typ.) or more is supplied to the CW/CCW pin. However, do not use this method as the restoration obtained from it is unstable.

- **RESET pin: Output off reset**

All output phases are turned Low and the externally connected power element is stopped. When 0.8 V (max) or less is input, the power is restored. During the restoration, if 2.1 V or more is not input to the VSP pin, and if the motor is not rotating (Hall signal = 5 Hz or less), a refresh operation will be performed (1.5 ms (typ.)). Then, normal drive will be restored.

During the reset, the internal counter continues to operate and the FG signal continues to be output.

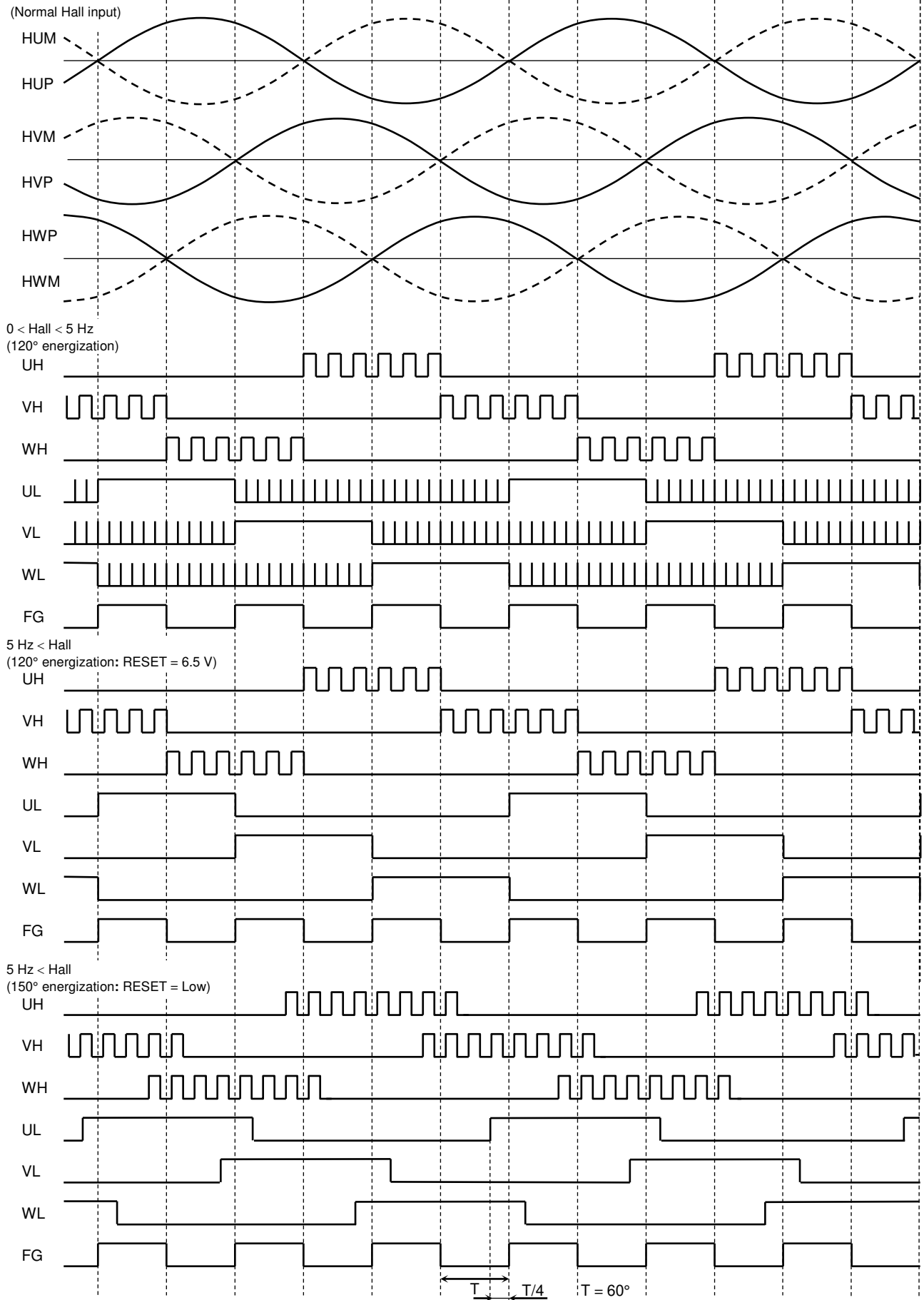
- **CW/CCW pin: System reset**

All output phases are turned Low and the externally connected power element is stopped.

Restoration takes place at an input of 6.35 V (typ.). However, operation after this kind of system reset is unstable. The FG signal is not output during a system reset.

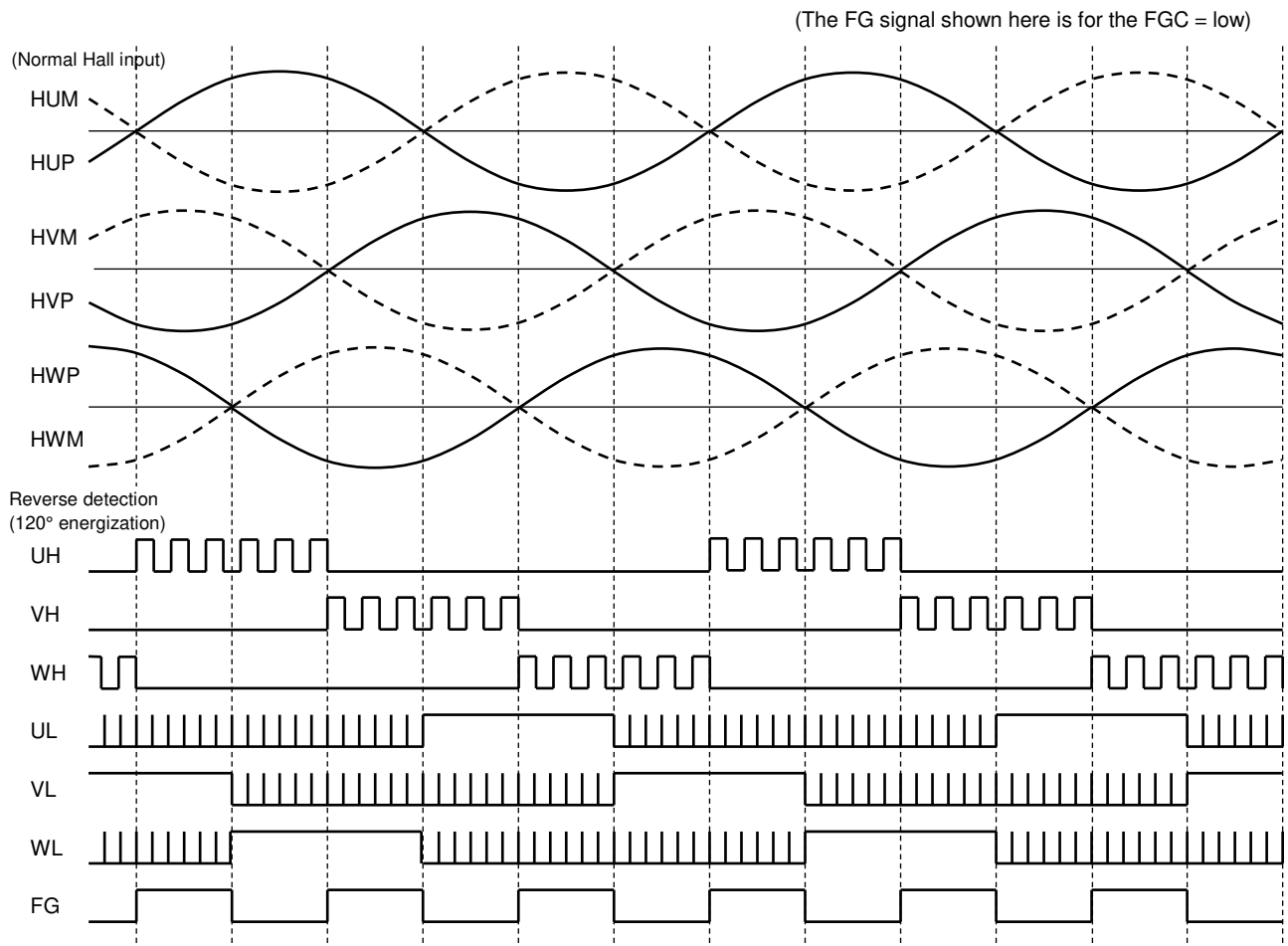
### Timing Chart (CW/CCW = Low, LA = GND)

(The FG signal shown here is for the FGC = low)



\*: When the Hall signal is 5 Hz or higher, the lead angle function operates in accordance with the LA pin signal.

## Timing Chart (CW/CCW = High, LA = GND)

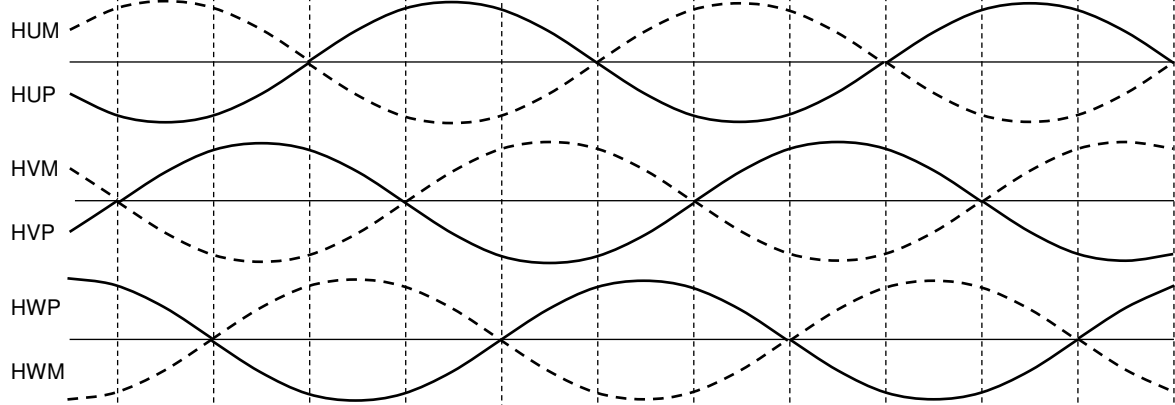


\*: When CW/CCW = High and a normal Hall signal is input, it runs at 120° energization for a lead angle of 0° (reverse rotation).

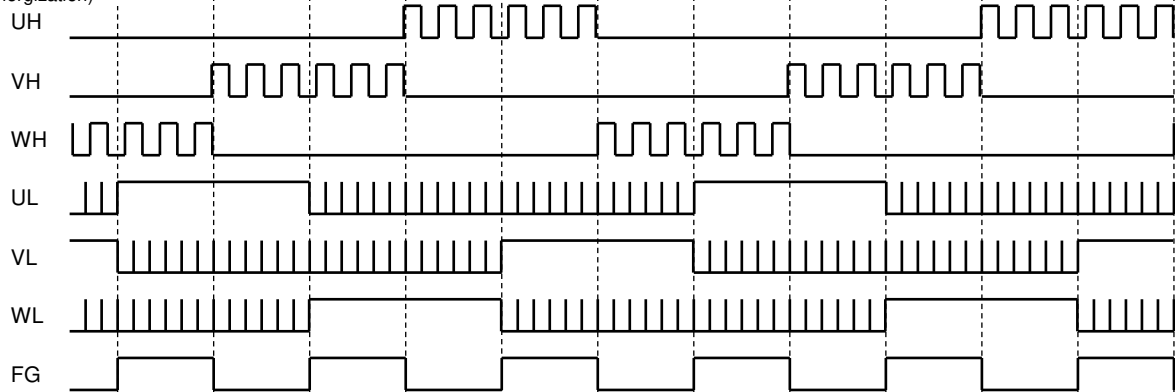
### Timing Chart (CW/CCW = High, LA = GND)

(The FG signal shown here is for the FGC = low.)

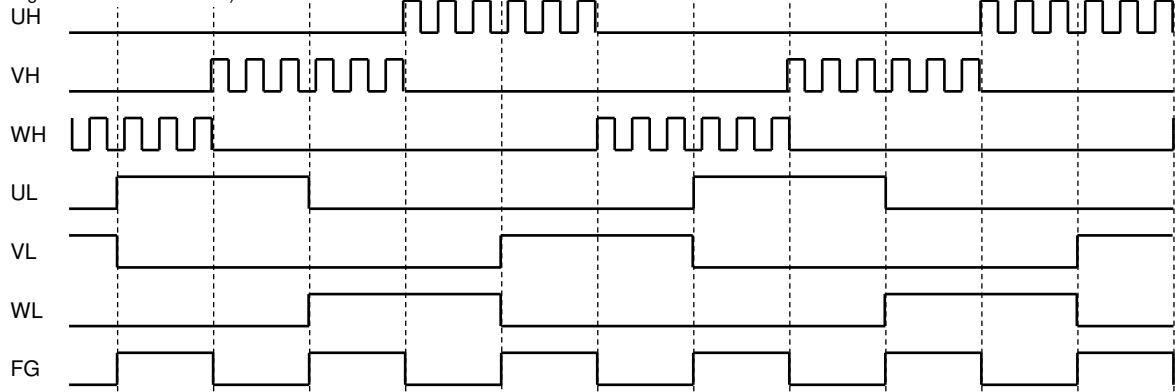
(Reverse Hall input)



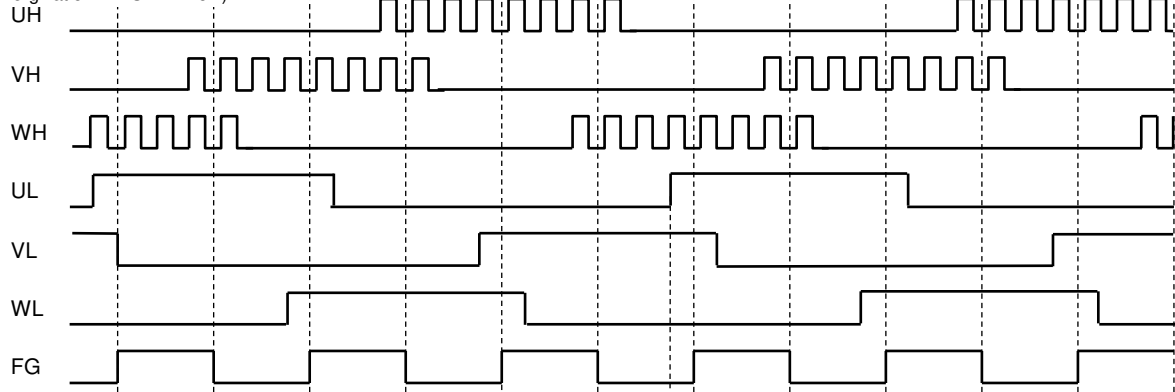
0 < Hall < 5 Hz  
(120° energization)



5 Hz < Hall  
(120° energization: RESET = 6.5 V)



5 Hz < Hall  
(150° energization: RESET = Low)

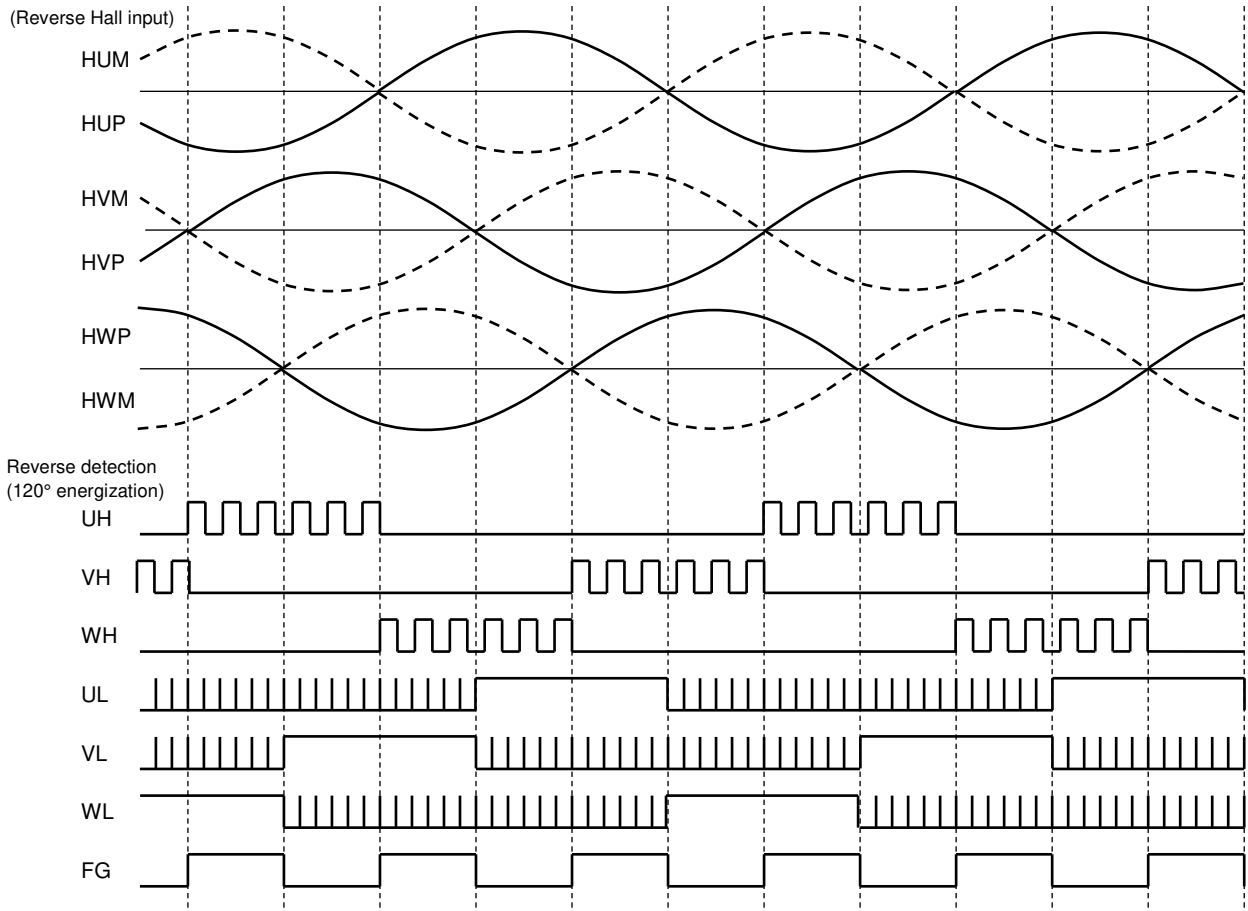


$T$   
 $T/4$      $T = 60^\circ$

\*: When the Hall signal is 5 Hz or higher, the lead angle function operates in accordance with the LA pin signal.

## Timing Chart (CW/CCW = Low, LA = GND)

(The FG signal shown here is for the FGC = low.)

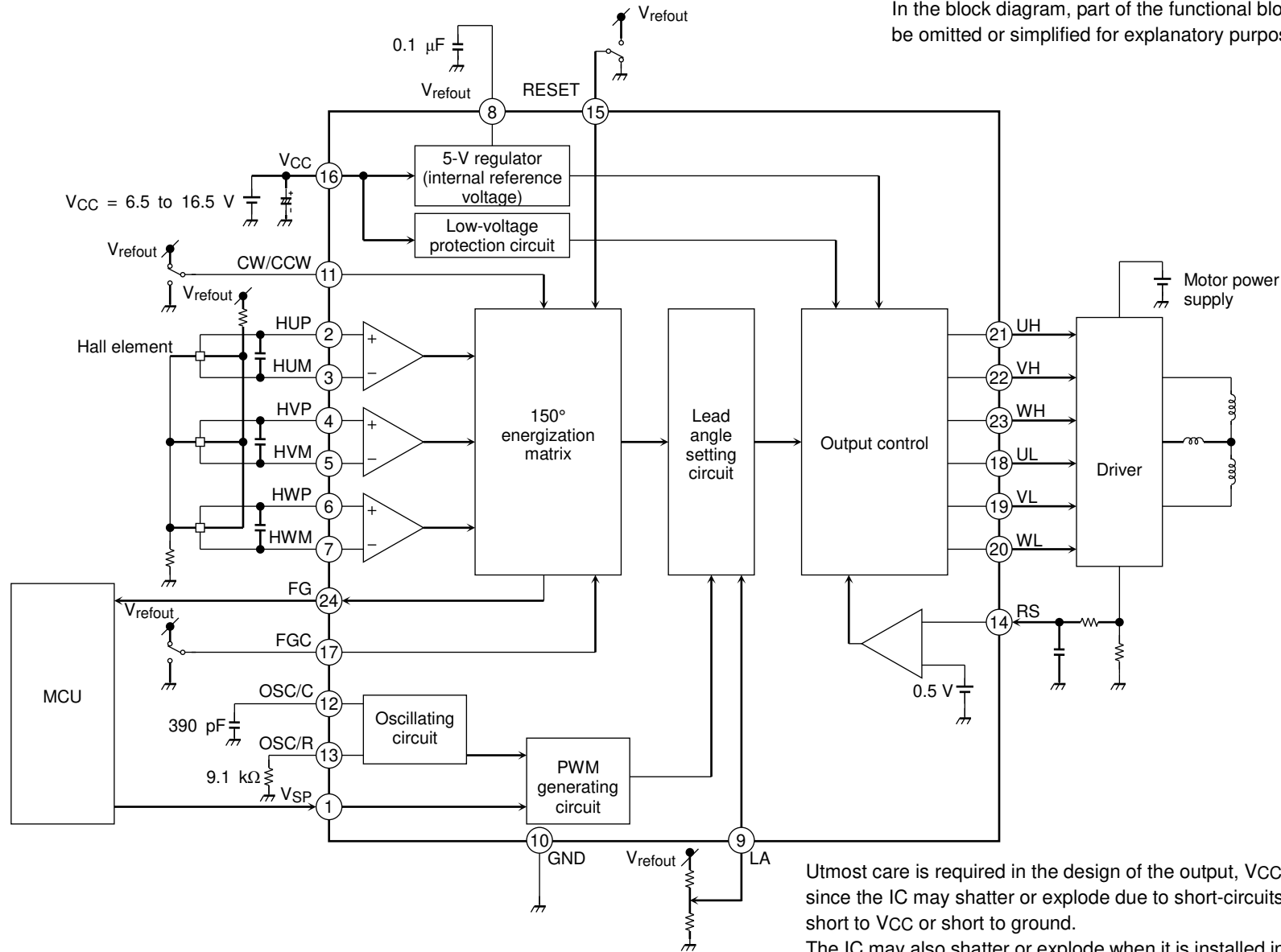


\*: When CW/CCW = Low and a reverse Hall signal is input, the motor runs at 120° energization for a lead angle of 0° (reverse rotation)



## Application Circuit Example

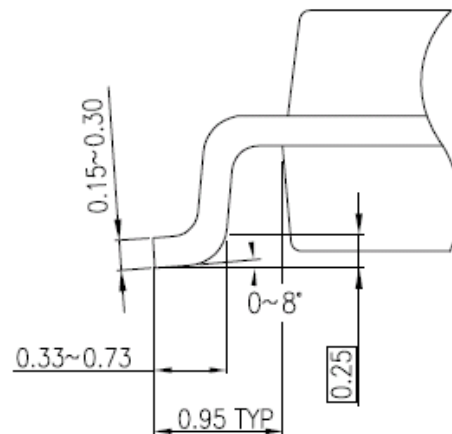
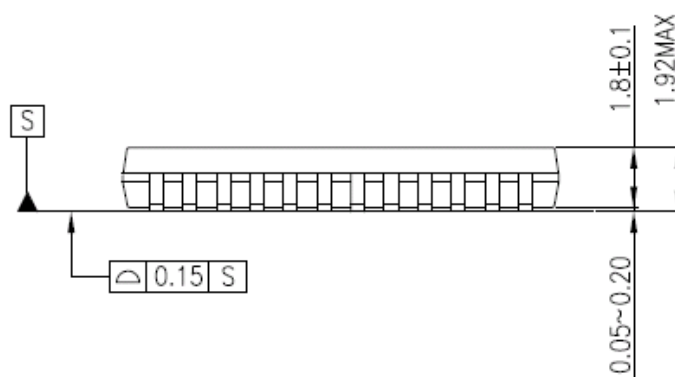
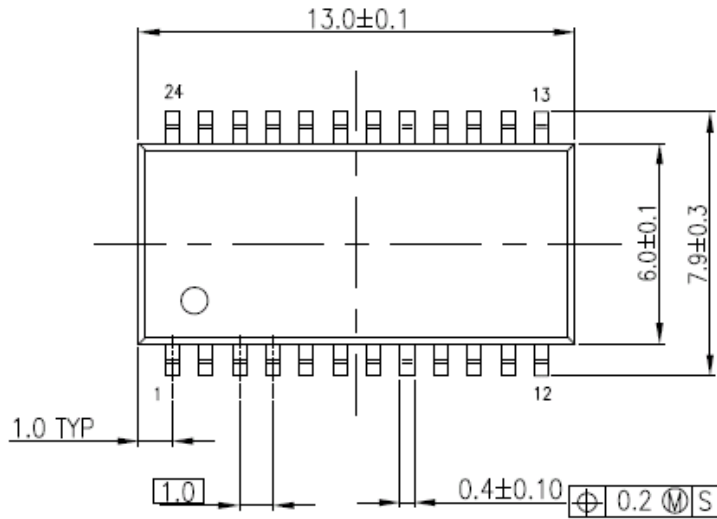
In the block diagram, part of the functional blocks or constants may be omitted or simplified for explanatory purposes.



## Package Dimensions

P-SSOP24-0613-1.00-001

"Unit:mm"



Weight: 0.36 g (typ.)

## Notes on Contents

### 1. Block Diagrams

Some of the functional blocks, circuits, or constants in the block diagram may be omitted or simplified for explanatory purposes.

### 2. Equivalent Circuits

The equivalent circuit diagrams may be simplified or some parts of them may be omitted for explanatory purposes.

### 3. Timing Charts

Timing charts may be simplified for explanatory purposes.

### 4. Application Circuits

The application circuits shown in this document are provided for reference purposes only. Thorough evaluation is required, especially at the mass production design stage.

Providing these application circuit examples does not grant a license for industrial property rights.

## IC Usage Considerations

### Notes on handling of ICs

- (1) The absolute maximum ratings of a semiconductor device are a set of ratings that must not be exceeded, even for a moment. Do not exceed any of these ratings.  
Exceeding the rating(s) may cause the device breakdown, damage or deterioration, and may result injury by explosion or combustion.
- (2) Use an appropriate power supply fuse to ensure that a large current does not continuously flow in case of over current and/or IC failure. The IC will fully break down when used under conditions that exceed its absolute maximum ratings, when the wiring is routed improperly or when an abnormal pulse noise occurs from the wiring or load, causing a large current to continuously flow and the breakdown can lead smoke or ignition. To minimize the effects of the flow of a large current in case of breakdown, appropriate settings, such as fuse capacity, fusing time and insertion circuit location, are required.
- (3) If your design includes an inductive load such as a motor coil, incorporate a protection circuit into the design to prevent device malfunction or breakdown caused by the current resulting from the inrush current at power ON or the negative current resulting from the back electromotive force at power OFF. IC breakdown may cause injury, smoke or ignition.  
Use a stable power supply with ICs with built-in protection functions. If the power supply is unstable, the protection function may not operate, causing IC breakdown. IC breakdown may cause injury, smoke or ignition.
- (4) Do not insert devices in the wrong orientation or incorrectly.  
Make sure that the positive and negative terminals of power supplies are connected properly. Otherwise, the current or power consumption may exceed the absolute maximum rating, and exceeding the rating(s) may cause the device breakdown, damage or deterioration, and may result injury by explosion or combustion.  
In addition, do not use any device that is applied the current with inserting in the wrong orientation or incorrectly even just one time.

**Points to remember on handling of ICs**

- (1) **Over current Protection Circuit**

Over current protection circuits (referred to as current limiter circuits) do not necessarily protect ICs under all circumstances. If the Over current protection circuits operate against the over current, clear the over current status immediately.

Depending on the method of use and usage conditions, such as exceeding absolute maximum ratings can cause the over current protection circuit to not operate properly or IC breakdown before operation. In addition, depending on the method of use and usage conditions, if over current continues to flow for a long time after operation, the IC may generate heat resulting in breakdown.
- (2) **Thermal Shutdown Circuit**

Thermal shutdown circuits do not necessarily protect ICs under all circumstances. If the thermal shutdown circuits operate against the over temperature, clear the heat generation status immediately. Depending on the method of use and usage conditions, such as exceeding absolute maximum ratings can cause the thermal shutdown circuit to not operate properly or IC breakdown before operation.
- (3) **Heat Radiation Design**

In using an IC with large current flow such as power amp, regulator or driver, please design the device so that heat is appropriately radiated, not to exceed the specified junction temperature ( $T_j$ ) at any time and condition. These ICs generate heat even during normal use. An inadequate IC heat radiation design can lead to decrease in IC life, deterioration of IC characteristics or IC breakdown. In addition, please design the device taking into consideration the effect of IC heat radiation with peripheral components.
- (4) **Back-EMF**

When a motor rotates in the reverse direction, stops or slows down abruptly, a current flow back to the motor's power supply due to the effect of back-EMF. If the current sink capability of the power supply is small, the device's motor power supply and output pins might be exposed to conditions beyond absolute maximum ratings. To avoid this problem, take the effect of back-EMF into consideration in system design.

## RESTRICTIONS ON PRODUCT USE

Toshiba Corporation and its subsidiaries and affiliates are collectively referred to as "TOSHIBA".

Hardware, software and systems described in this document are collectively referred to as "Product".

- TOSHIBA reserves the right to make changes to the information in this document and related Product without notice.
- This document and any information herein may not be reproduced without prior written permission from TOSHIBA. Even with TOSHIBA's written permission, reproduction is permissible only if reproduction is without alteration/omission.
- Though TOSHIBA works continually to improve Product's quality and reliability, Product can malfunction or fail. Customers are responsible for complying with safety standards and for providing adequate designs and safeguards for their hardware, software and systems which minimize risk and avoid situations in which a malfunction or failure of Product could cause loss of human life, bodily injury or damage to property, including data loss or corruption. Before customers use the Product, create designs including the Product, or incorporate the Product into their own applications, customers must also refer to and comply with (a) the latest versions of all relevant TOSHIBA information, including without limitation, this document, the specifications, the data sheets and application notes for Product and the precautions and conditions set forth in the "TOSHIBA Semiconductor Reliability Handbook" and (b) the instructions for the application with which the Product will be used with or for. Customers are solely responsible for all aspects of their own product design or applications, including but not limited to (a) determining the appropriateness of the use of this Product in such design or applications; (b) evaluating and determining the applicability of any information contained in this document, or in charts, diagrams, programs, algorithms, sample application circuits, or any other referenced documents; and (c) validating all operating parameters for such designs and applications. **TOSHIBA ASSUMES NO LIABILITY FOR CUSTOMERS' PRODUCT DESIGN OR APPLICATIONS.**
- **PRODUCT IS NEITHER INTENDED NOR WARRANTED FOR USE IN EQUIPMENTS OR SYSTEMS THAT REQUIRE EXTRAORDINARILY HIGH LEVELS OF QUALITY AND/OR RELIABILITY, AND/OR A MALFUNCTION OR FAILURE OF WHICH MAY CAUSE LOSS OF HUMAN LIFE, BODILY INJURY, SERIOUS PROPERTY DAMAGE AND/OR SERIOUS PUBLIC IMPACT ("UNINTENDED USE").** Except for specific applications as expressly stated in this document, Unintended Use includes, without limitation, equipment used in nuclear facilities, equipment used in the aerospace industry, lifesaving and/or life supporting medical equipment, equipment used for automobiles, trains, ships and other transportation, traffic signaling equipment, equipment used to control combustions or explosions, safety devices, elevators and escalators, and devices related to power plant. **IF YOU USE PRODUCT FOR UNINTENDED USE, TOSHIBA ASSUMES NO LIABILITY FOR PRODUCT.** For details, please contact your TOSHIBA sales representative or contact us via our website.
- Do not disassemble, analyze, reverse-engineer, alter, modify, translate or copy Product, whether in whole or in part.
- Product shall not be used for or incorporated into any products or systems whose manufacture, use, or sale is prohibited under any applicable laws or regulations.
- The information contained herein is presented only as guidance for Product use. No responsibility is assumed by TOSHIBA for any infringement of patents or any other intellectual property rights of third parties that may result from the use of Product. No license to any intellectual property right is granted by this document, whether express or implied, by estoppel or otherwise.
- **ABSENT A WRITTEN SIGNED AGREEMENT, EXCEPT AS PROVIDED IN THE RELEVANT TERMS AND CONDITIONS OF SALE FOR PRODUCT, AND TO THE MAXIMUM EXTENT ALLOWABLE BY LAW, TOSHIBA (1) ASSUMES NO LIABILITY WHATSOEVER, INCLUDING WITHOUT LIMITATION, INDIRECT, CONSEQUENTIAL, SPECIAL, OR INCIDENTAL DAMAGES OR LOSS, INCLUDING WITHOUT LIMITATION, LOSS OF PROFITS, LOSS OF OPPORTUNITIES, BUSINESS INTERRUPTION AND LOSS OF DATA, AND (2) DISCLAIMS ANY AND ALL EXPRESS OR IMPLIED WARRANTIES AND CONDITIONS RELATED TO SALE, USE OF PRODUCT, OR INFORMATION, INCLUDING WARRANTIES OR CONDITIONS OF MERCHANTABILITY, FITNESS FOR A PARTICULAR PURPOSE, ACCURACY OF INFORMATION, OR NONINFRINGEMENT.**
- Do not use or otherwise make available Product or related software or technology for any military purposes, including without limitation, for the design, development, use, stockpiling or manufacturing of nuclear, chemical, or biological weapons or missile technology products (mass destruction weapons). Product and related software and technology may be controlled under the applicable export laws and regulations including, without limitation, the Japanese Foreign Exchange and Foreign Trade Law and the U.S. Export Administration Regulations. Export and re-export of Product or related software or technology are strictly prohibited except in compliance with all applicable export laws and regulations.
- Please contact your TOSHIBA sales representative for details as to environmental matters such as the RoHS compatibility of Product. Please use Product in compliance with all applicable laws and regulations that regulate the inclusion or use of controlled substances, including without limitation, the EU RoHS Directive. **TOSHIBA ASSUMES NO LIABILITY FOR DAMAGES OR LOSSES OCCURRING AS A RESULT OF NONCOMPLIANCE WITH APPLICABLE LAWS AND REGULATIONS.**