



Main

| | |
|---|------------------------------------|
| Range of Product | Harmony K |
| Product or Component Type | Complete cam switch |
| Component name | K1 |
| [Ith] conventional free air thermal current | 12 A |
| Mounting Location | Front |
| Fixing Mode | Ø 22 mm hole |
| Cam switch head type | With front plate 45 x 45 mm |
| Type of operator | Black handle 1.38 in (35 mm) |
| Rotary handle padlocking | Without |
| Presentation of legend | With metallic, 0 - 1 - 2 - 3 black |
| Cam switch function | Stepping switch |
| Return | Without |
| Off position | With Off position |
| Poles description | 3P |
| Switching positions | Right: 0° - 45° - 90° - 135° |
| IP degree of protection | IP65 IEC 529 IP65 NF C 20-010 |

Complementary

| | |
|--|---|
| Number of steps | 3 |
| Switching angle | 45° |
| [Ui] rated insulation voltage | 690 V 3)IEC 60947-1 |
| [Ithe] conventional enclosed thermal current | 10 A |
| Rated operational power in W | 10500 W AC-21, 500...660 V 3 phase IEC 947-3 1100 W AC-3, 230 V 3 phase IEC 947-3 1500 W AC-23A, 230 V 3 phase IEC 947-3 1500 W AC-3, 400 V 1 phase IEC 947-3 1500 W AC-3, 400 V 3 phase IEC 947-3 1500 W AC-3, 500 V 3 phase IEC 947-3 1500 W AC-3, 690 V 3 phase IEC 947-3 2200 W AC-23A, 400 V 3 phase IEC 947-3 2200 W AC-23A, 500 V 3 phase IEC 947-3 2200 W AC-23A, 690 V 3 phase IEC 947-3 4800 W AC-21, 230 V 3 phase IEC 947-3 600 W AC-3, 230 V 1 phase IEC 947-3 8300 W AC-21, 400 V 3 phase IEC 947-3 |
| [Ie] rated operational current AC | 1.8 A 690 V AC-3 3 phase IEC 947-3 2.8 A 500 V AC-3 3 phase IEC 947-3 2.8 A 690 V AC-23A 3 phase IEC 947-3 3.3 A 400 V AC-3 3 phase IEC 947-3 3.8 A 500 V AC-23A 3 phase IEC 947-3 4.6 A 230 V AC-3 3 phase IEC 947-3 4.8 A 400 V AC-23A 3 phase IEC 947-3 5.6 A 230 V AC-23A 3 phase IEC 947-3 1 A 500 V AC-15 IEC 947-5-1 2 A 400 V AC-15 IEC 947-5-1 3 A 230 V AC-15 IEC 947-5-1 |
| Electrical durability | 1000000 Cycles AC-15 1000000 Cycles AC-21 500000 Cycles AC-23 500000 cycles AC-3 |

| | |
|--|---|
| Maximum operating rate | 2.5 Cyc/Mn AC-21 2.5 Cyc/Mn AC-23 2.5 Cyc/Mn AC-3 8.333 cyc/mn AC-15 |
| Short-circuit current | 10000 A |
| Short-circuit protection | 16 A cartridge fuse gG |
| [Uimp] rated impulse withstand voltage | 4 KV in isolating function 6 kV IEC 947-1 |
| Contact operation | Slow-break |
| Positive opening | With |
| Electrical connection | Captive screw clamp terminals flexible 2 x 1.5 mm ² Captive screw clamp terminals solid 1 x 2.5 mm ² |
| Mechanical durability | 1000000 cycles |
| CAD overall width | 1.77 in (45 mm) |
| CAD overall height | 1.97 in (50 mm) |
| CAD overall depth | 3.50 in (89 mm) |
| Net Weight | 0.52 lb(US) (0.235 kg) |

Environment

| | |
|---------------------------------------|--|
| Standards | EN 60947-3 power circuit EN 60947-5-1 control circuit IEC 60947-3 power circuit IEC 60947-5-1 control circuit CENELEC EN 50013 |
| Product certifications | CSA 240 V 3 hp 3 phase 2 UL 240 V 0.33 hp 1 phase 2 CSA 240 V 1 hp 1 phase UL 240 V 1 hp 3 phase |
| Protective treatment | TC |
| Ambient air temperature for operation | -13...131 °F (-25...55 °C) |
| Ambient Air Temperature for Storage | -40...158 °F (-40...70 °C) |
| Shock resistance | 30 gn IEC 68-2-27 |
| Vibration resistance | 5 gn 10...150 Hz)IEC 68-2-6 |
| Overvoltage category | Class II IEC 536 Class II NF C 20-030 |

Ordering and shipping details

| | |
|-----------------------|-----------------------------|
| Category | 21446 - 9003 K CAM SWITCHES |
| Discount Schedule | CS1 |
| GTIN | 3389110979114 |
| Nbr. of units in pkg. | 1 |
| Package weight(Lbs) | 8.29 oz (235 g) |
| Returnability | No |
| Country of origin | CZ |

Packing Units

| | |
|------------------------|-------------------|
| Unit Type of Package 1 | PCE |
| Package 1 Height | 5.31 in (13.5 cm) |
| Package 1 width | 2.05 in (5.2 cm) |
| Package 1 Length | 2.20 in (5.6 cm) |

Offer Sustainability

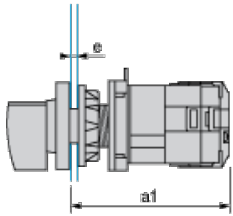
| | |
|----------------------------|--|
| Sustainable offer status | Green Premium product |
| California proposition 65 | WARNING: This product can expose you to chemicals including: Nickel compounds, which is known to the State of California to cause cancer, and Di-isodecyl phthalate (DIDP), which is known to the State of California to cause birth defects or other reproductive harm. For more information go to www.P65Warnings.ca.gov |
| REACH Regulation | REACH Declaration |
| REACH free of SVHC | Yes |
| EU RoHS Directive | Pro-active compliance (Product out of EU RoHS legal scope) EU RoHS Declaration |
| Toxic heavy metal free | Yes |
| Mercury free | Yes |
| RoHS exemption information | Yes |
| China RoHS Regulation | China RoHS Declaration |
| Environmental Disclosure | Product Environmental Profile |
| WEEE | The product must be disposed on European Union markets following specific waste collection and never end up in rubbish bins. |

Contractual warranty

| | |
|----------|-----------|
| Warranty | 18 months |
|----------|-----------|

Operating Head and Body with Plastic Base

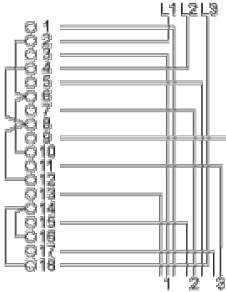
Front Mounting by $\varnothing 22$ mm/0.87 in. Hole



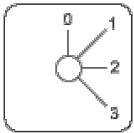
a1 110.5 mm/4.35 in.

e support panel thickness 1 mm/0.039 in. to 6 mm/0.24 in.

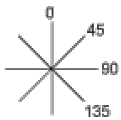
Link Positions (Factory Mounted)



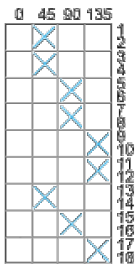
Marking



Angular Position of Switch



Switching Program



Convention Used for Switching Program Representation

- Contact closed
- Contact closed in 2 positions and maintained between the 2 positions
- Sealed assembly for auto-maintain control
- Overlapping contacts
- Spring return position: for a switching angle of 90°, spring return is over 30° after the last position (for a maximum of 3 simultaneous contacts).

Example:

